

Bullying Research Network

Think Tank 2016



THE 6TH ANNUAL BRNET THINK TANK

Hosted by: The Buffett Early Childhood Institute, College of Education and Human Sciences, and the Bullying Research Network

We are pleased to invite you to join us in Lincoln, Nebraska for the 6th Annual Think Tank on bullying. BRNET promotes and assists international collaboration among bullying and peer victimization researchers. Please join us for another amazing opportunity to collaborate and discuss key topics in bullying.

THE 6TH ANNUAL BRNET THINK TANK

BULLYING PREVENTION: IDENTIFYING AND INTERVENING IN EARLY CHILDHOOD



In this brochure, you will find information on registration, the Think Tank schedule, locations, things to do in Lincoln, and local accommodations. We hope to see you there!

REGISTRATION

Scholars interested in participating in the Think Tank will need to register at <http://cyfs.unl.edu/conference/2016/ThinkTank/> by **June 1st**. Participants are expected to cover their own travel and accommodation costs, but participation in the event is free, including meals.

HISTORY

In previous years, the following themes have been the focus of the Think Tank conference:

2011: Bullying Online and at School (hosted by University of Nebraska-Lincoln)

2012: New Directions for Positive Youth Development (hosted by University of Virginia)

2013: International Insights to Address Bullying (hosted by University of California-Santa Barbara)

2014: Bullying and Mental Health & Bullying Across the Lifespan (hosted by University of British Columbia)

2015: Multi-disciplinary Approaches to Understanding Bullying (hosted by Boston University)

SCHEDULE

Day 1: Tuesday, June 14th

8:30-9:30 AM	Welcome to UNL, Interim Dean Dr. Beth Doll Remarks by Drs. Shelley Hymel and Susan Swearer Catered Breakfast
9:30-10:30 AM	History of Bullying Research, Dr. Dan Olweus
10:30-12:00 PM	Participant Introductions and Research Interests
12:00-1:00 PM	Catered lunch provided
1:00-2:30 PM	Discussion: Bullying and early childhood education topics – where are the gaps?
2:30-3:00 PM	Break
3:00-5:00 PM	Brainstorm four papers to be included in a special issue on bullying in early childhood
5:00-5:30 PM	Travel to the International Quilt Study Center & Museum (1523 N. 33 rd Street)
5:30-7:00 PM	Wine and Hors D'oeuvres at the International Quilt Study Center & Museum

Day 2: Wednesday, June 15th

8:30-9:30 AM	Catered Breakfast
9:30-12:00 PM	Outline papers for special issue, determining writing assignments, deadlines
12:00-1:00 PM	Catered lunch
1:00-1:45 PM	Travel to Beatrice, Nebraska (Sue will drive)
2:00-5:30 PM	Tour the Homestead National Monument of America (8523 NE- 4, Beatrice, NE 68310)
6:00 PM	Dinner at the Black Crow (405 Court St., Beatrice, NE 68310)

LOCATIONS

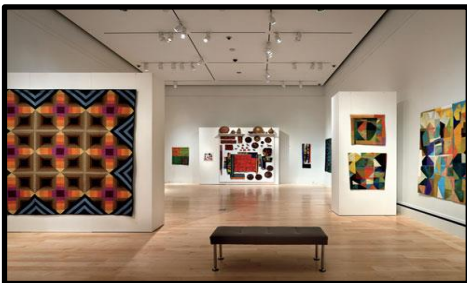
The Buffett Early Childhood Institute's Collaboratorium (University of Nebraska-Lincoln)



1400 Teachers College
Lincoln, NE 68588

The Buffett Early Childhood Institute Collaboratorium is housed in Teachers College Hall on UNL's city campus. It is intended to provide a setting for multidisciplinary conversations about early childhood development and other areas of interest. The Collaboratorium is a flexible space that can accommodate both small and large groups, and is fully equipped for videoconferencing and other meeting needs. Additionally, the Collaboratorium provides office space where advanced graduate students and postdoctoral appointees can work together.

The International Quilt Study Center & Museum



1523 N. 33rd St.
Lincoln, NE 68583

The International Quilt Study Center & Museum is located on the University of Nebraska-Lincoln's East Campus (33rd and Holdrege streets). The museum has the world's largest publicly held quilt collection, dating from the early 1700s to present, and representing more than 45 countries.

For directions: http://www.quiltstudy.org/visit/directions_map.html

Nebraska's National Homestead Monument of America



24405 SW 75th Road
Beatrice, NE 68310

The Homestead National Monument of America, located in Southeast Nebraska, commemorates the Homestead Act of 1862, which granted 160 acres of free land to claimants and significantly helped expand the United States westward.

For directions: <http://www.nps.gov/home/planyourvisit/directions.htm>

The Black Crow



405 Court Street
Beatrice, NE 68310

Southeast Nebraska's best fine dining restaurant, serving the area's finest steaks, fresh fish, pastas, and more!

For menu: <http://www.blackcrowrestaurant.com/index.html>

LINCOLN ATTRACTIONS



STATE CAPITOL



SUNKEN GARDENS



UNIVERSITY OF NEBRASKA STATE MUSEUM



MEMORIAL STADIUM



PIONEER PARK AND NATURE CENTER



HISTORIC HAYMARKET



[Click here for more things to do in Lincoln, Nebraska!](#)

LOCAL ACCOMODATIONS/LODGING

*UNL has partnered with hotels to offer discounted rates. For further details about the discounts each hotel offers, please call the hotel front desk. Please note that prices may vary and discounts may be based on availability.

*Embassy Suites by Hilton Lincoln (0.6 miles/12 minute walk from UNL)



1040 P Street
Lincoln, NE 68508
402-474-1111

Price per night: \$139-\$169 (Use Promotion Code: **2838840**)

Check-in: 3:00 PM

Check-out: 12:00 PM

[Click to reserve a room](#)

*The Lincoln Marriott Cornhusker Hotel (0.8 miles/15 minute walk from UNL)



333 S. 13th Street
Lincoln, NE 68508
402-474-7474

Price per night: \$159-\$179 (Use Promotion Code: **17UAUU**)

Check-in: 3:00 PM

Check-out: 12:00 PM

[Click to reserve a room](#)

Holiday Inn Lincoln-Downtown (0.8 miles/15 minute walk from UNL)



141 N 9th Street
Lincoln, NE 68508
402-475-4011

Price per night: \$121-\$130

Check-in: 3:00 PM

Check-out: 12:00 PM

[Click to reserve a room](#)

*Courtyard Lincoln/Downtown-Haymarket (0.8 miles/15 minute walk from UNL)



808 R Street
Lincoln, NE 68508
402-904-4800

Price per night: \$139-\$209 (Ask for **Husker Preferred** rate)

Check-in: 3:00 PM

Check-out: 12:00 PM

[Click to reserve a room](#)

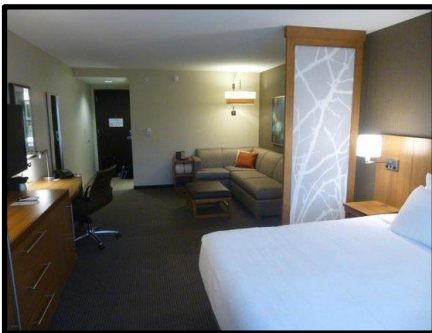
Hilton Garden Inn Lincoln/Downtown-Haymarket (0.8 miles/15 minute walk from UNL)



801 R Street
Lincoln, NE 68508
402-475-9000

Price per night: \$134
Check-in: 3:00 PM
Check-out: 12:00 PM
[Click to reserve a room](#)

*Hyatt Place Lincoln/Downtown-Haymarket (0.9 miles/18 minute walk from UNL)



600 Q Street
Lincoln, NE 68508
402-742-6007

Price per night: \$143-\$169 (Use Promotion Code: **34035**)
Check-in: 3:00 PM
Check-out: 12:00 PM
[Click to reserve a room](#)

TRAVEL ACCOMODATIONS

SHUTTLE

[OMALiNK](#) provides transportation between Omaha and Lincoln.

- 877-473-LINK (5465)
- 402-485-LINK (5465)

CAR RENTALS

- [Alamo](#)
800-462-5266, 402-474-4301
- [Avis](#)
800-831-2847, 402-474-1202
- [Budget](#)
800-527-0700, 402-474-2800
- [Hertz](#)
800-654-3131, 402-474-4079
- [National](#)
800-227-7368, 402-474-4301