

August 14, 2024

VOLUME 123

Weekly Wednesday

Department of Educational Psychology



What's Inside:

- 1) Orientation 2024
- 2) Announcements
- 3) News
- 4) Other Reminders
- 5) Summertime Fun!
- 6) The Week Ahead

Don't Forget!

New Student Orientation & Welcome Back Luncheon

We are excited to meet you and welcome each of you to our department!

SAVE THE DATE:

***Friday
August 23rd***

Attendance is REQUIRED for all newly admitted students!

Orientation Schedule

9am-12pm:

Check-in begins at 8:30

New Student Orientation **Breakfast Provided!**

Teachers College Hall (TEAC) Room 105



12pm: Lunch

Carolyn Pope Edwards Hall (CPEH) Room 227



1:30pm:

Individual Program Orientations

Location(s): Talk to your program director!

Reminder!!!



REGISTER FOR CLASSES AS SOON AS POSSIBLE!

Be sure to register for your full load of classes ASAP! Late registration begins **Monday, August 26th**. If you do not register for your classes by that time, you will be charged a **\$100 late fee**.

Not sure what classes you need to take? **TALK TO YOUR ADVISOR!**

If you need a permission code, utilize our CARS system on our website

<https://cehs.unl.edu/edpsych/>; under Current Student Support

If you do not see your course listed in CARS, please contact the instructor via email to request enrollment in their class.

Be sure to familiarize yourself with UNL's 2024-2025 Academic Calendar, which includes dates and deadlines for registration, upcoming holidays, and more! You can find the calendar here:

<https://registrar.unl.edu/academic-calendar/2024-2025/>

If you have any questions, please contact Zee at mcronin6@unl.edu

Graduate Student Resource Fair



Join us for the Graduate Student Resource Welcome Fair on August 22, 2024 at 10am in Seaton Hall! This event will provide you helpful information on resources and support available to help you throughout your graduate student experience. Individuals will have the opportunity to talk directly with faculty and staff working across campus as well as grab a few freebies and giveaways during the event.

Date: August 22, 2024

Time: 10 a.m. to 12 p.m.

Location: Seaton Hall Quad

No registration required!



Need a campus map?
<https://maps.unl.edu/>

Do you have an assistantship outside of EDPS this upcoming Academic Year?

If you are a GTA or GRA for a department outside of EDPS and haven't already, please email a signed copy of your contract to Jules!

Please be sure to send your contract as a PDF.

Announcements



CONGRATULATIONS!

**Dr. Beth Doll was awarded the
2024 APA Division 16
Lifetime Achievement Award!**

**Way to go, Beth! We are so proud of you
and honored to have you as a colleague,
mentor, and friend. You are amazing!**



& to continue the celebration...

The Buros Center for Testing was awarded a \$487,551 contract for a two-year project with California Community College's Chancellor's Office. As the lead PI, Dr. Jessica L. Jonson will assist the client with the review and approval of ESL placement tests used by local colleges and developing guidelines for the use of guided and self placement assessments.

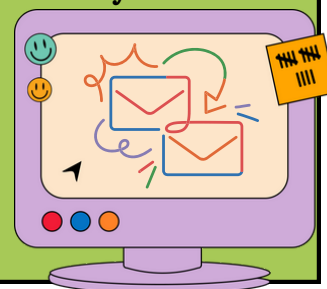
Kudos to you, Jessica! This is incredible!



Communication Mechanisms & Reminders

Every student admitted to the University receives a Huskers email address (@huskers.unl.edu). All official communications from the University and our department will be sent to your UNL email. Additionally, all University communication MUST come from your Huskers email address. Please check your inbox DAILY, as we send many important announcements via email.

We have a number of email listservs throughout our department. If you are not receiving emails you think you should be receiving, please contact your program director and Jules!



FREE BUS PASS



available to all UNL students, staff, & faculty

Bus passes for 2024-2025 take effect on August 1. StarTran bus passes are available to all UNL campus faculty, staff, and students at no cost. The bus passes

Passes are coordinated through the Token Transit app. To download your bus permit, please follow these steps:

1. Download the Token Transit App
2. Visit the registration form at: <https://tokentransit.com/startran/unl-pass>
3. Enter your UNL email/Password
4. Click the "Send Pass" button
5. You will receive an email with next steps from orders@mail.tokentransit.com, subject line "Redeem Your Transit Pass for StarTran!"
6. Access the email from your mobile device and tap the TT app icon to redeem and use the pass.
7. Tap "Redeem" in the Token Transit app to finish adding the pass to your app!



To use your bus pass, select "Tap to use this pass" and show the ticket to the bus driver when boarding. Routes, schedules, and other rider information are detailed at Campus Bus Service: <https://parking.unl.edu/campus-bus-service>

For questions, call Parking and Transit Services at 402-472-1800

Need to reserve a room?

Whether you are scheduling classes, dissertation defenses, or need a room to host a meeting, Zee's got you covered!

If you would like to reserve a room, please utilize the link below or scan the QR code available in the EDPS office (TEAC 114)

<https://tinyurl.com/TEACRoomRes>

*Note: requests must be submitted no later than 48hrs before your reservation request

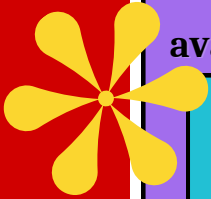
Questions? Email Zee!



How was your Summer? What did you get up to?

I WANT TO HEAR ALL ABOUT IT!

If you would like to share a piece of your summer fun, please email me (Jules) a photo or two of one of the best parts of your summer! This can be anything: a sunset, a delicious meal, or a photo of you on vacation. Please refrain from sending photos featuring non-EDPS individuals for privacy purposes. Additionally, include with your photos a short caption or blurb about the activity you share with me.



Summertime Fun!



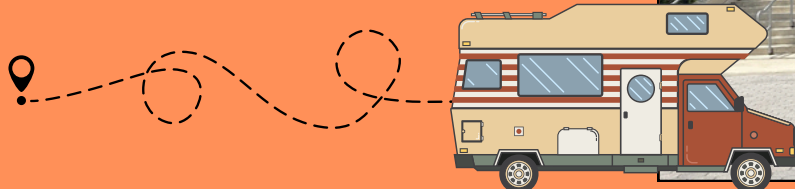
Mun took a trip to Malaysia in June. Here they are in Penang enjoying cendol, one of their favorite desserts EVER!



**KELLAN & AIMIE
WENT TO ITALY!**



**SUE & SCOTT TOOK A
CROSS-COUNTRY RV TRIP!**



**THEIR DOG LAMBEAU
AT LAMBEAU FIELD!**

Zee & her family went to California!



She & her daughters danced on a tree trunk the size of TEAC 113!!! (isn't that wild?!)



Jules had a Hot Dog Summer™

Jules took a (vegetarian) hot dog pilgrimage to Chicago in June. They ate 5 hot dogs in under 72 hours. And yes, they wrote reviews for each and every one of them

Their favorite? A standard Chicago Dog from Relish (a stand near Grant Park)

Jules was also crowned the FIRST EVER

Mx. Hot Dog Nebraska!!!

Hot! Dog! ROYALTY!!!





Upcoming Office Hours

August 14-August 18

Please email

Dr. Swearer (sswearer@unl.edu)

to set up a meeting.

August 19: no office hours

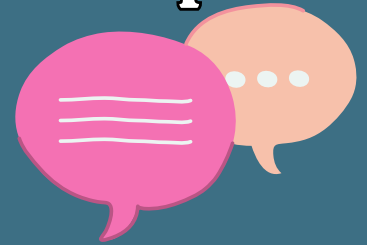
August 20: 12-1pm

Susan Swearer, Ph.D., LP

Chairperson

Department of Educational Psychology

University of Nebraska-Lincoln



DEMAC Library

- To look at the inventory, please visit the DEMAC TEAMS page: <https://go.unl.edu/edpsteams>
- Some additional reading materials are available as a PDF. Please visit the DEMAC Library inventory on TEAMS to see if the text you're looking for is available as a PDF.
- If a PDF is available, please email a request to Jules & Zee and they will assist you!

Please email Jules to set up an appointment to visit the library in their office!!!



Jules' Office Hours

email Jules to
set up an
appointment

note: Jules is unable to
meet on Wednesdays