

November 1, 2023

Volume 99

Weekly Wednesday

Department of Educational Psychology

What's Inside:

- 1) Top Stories
- 2) Announcements
- 3) News
- 4) Diversity, Equity, & Inclusion
- 5) Clinic Corner
- 6) The Week Ahead





DLS FALL SOCIAL EVENT!

LET'S LAUGH, GLIDE, AND MAKE SOME COOL MEMORIES ON THE ICE!

YOU'RE INVITED TO GO TO ICE SKATING WITH US!

DATE & TIME : NOVEMBER 3RD @ 3PM

LOCATION: JOHN BRESLOW ICE HOCKEY CENTER



Come Join us!

DLS Students! Please register for the event using THIS LINK

Admission to skate will be taken care of by the department.

Do not forget to bring your UNL Student ID!

Please be mindful of your abilities & limits in the ice arena. Here are some tips for first time skaters: <https://tinyurl.com/DLSiceskate>

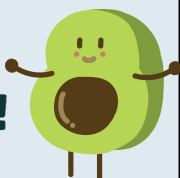
The Department of Sociology seeks a Graduate Research Assistant for Spring 2024. Depending on performance, summer 2024 funding may be available. The GRA will be supervised by Dr. Werum. GRA duties primarily involve assisting Dr. Werum's team with survey questionnaire design and analysis of (quantitative and qualitative) survey data.

For more information, visit:

<https://cehs.unl.edu/edpsych/graduate-assistantships/>



HAPPENING THIS WEEKEND!



This weekend we celebrate Pepe of Pepe's Bistro and all he does for our community. Since Pepe opened his bistro in 2008, he has shown up time and time again to support and encourage his neighbors. Pepe continually shows up for his community, and now it's time for the community to show up for him.

It has been 15 years since Pepe has been able to take a vacation and rest, and upcoming winter months coupled with spring street closings on 11th Street will bring slower business. Let's get together to celebrate Pepe and raise some dollars to support him through this time so he is able to have some well-deserved rest!



If you would like to contribute to the gofundme that was created for Pepe, you can do so [HERE](#) or click the radish to go directly to the page.

Pepe Fest

Join us at Pepe Fest, a heartwarming celebration dedicated to Pepe of Pepe's Bistro, a beloved member of our community who has always given so much. This event is all about giving back to the person with the biggest heart, helping Pepe and his business thrive. Come together for a day of fun, food, music, and fundraising as we show our appreciation for this wonderful human.

11AM-4PM November 4th
@ Pepe's Bistro
1311 S 11th St, Lincoln, NE 68502

Pepe's BISTRO



DECEMBER GRADUATES



If you plan on graduating this December, please be aware of the deadlines posted below:

MASTER'S DEGREE DECEMBER 2023 GRADUATION DEADLINES

- NOV. 9** Last day to submit the Final Examination Report Form
- NOV. 16** Final day to email Rough Draft of Thesis to Master's Programs Coordinator. If only written comprehensive examination is required (major and/or minor), advisor must notify the Master's Programs Coordinator of the results
- NOV. 30** Last day to hold Final Oral Examination
- DEC. 1** Final date to resolve incomplete grades, submit the final thesis as a PDF to the Master's Programs Coordinator and wait for approval prior to uploading it to Digital Commons. Upload it to UNL Digital Commons, receive a confirmation email from UNL Digital Commons of successful thesis upload, and pay the final thesis processing fees of \$25 (required) in MyRed To do list

DOCTORAL DECEMBER 2023 GRADUATION DEADLINES

- NOV. 17** Last day to submit the Application for Final Oral Examination form, and PDF Rough Draft Dissertation/Document for formatting review
- Last day to hold final Oral Examination
- Final dissertation/document formatting review - after successful completion of your final oral examination
- DEC. 1** Upload final dissertation/document to ProQuest (after approval is given)
- Submit Doctoral Deposit Fee - \$25 (required)
- Submit your signed Report of Completion form and Abstract to the Doctoral Steps to Degree Completion page

Master's Degree

Doctoral Degree

We Are Hiring!

Please share with your undergraduate students!

The Department of Educational Psychology is looking for an undergraduate student worker to assist with digital outreach and general office maintenance.

- \$12/hour
- Up to 10 hours per week with the opportunity for more as need arises.

For more information, visit: <https://tinyurl.com/UNLEDPS>



Announcements



mcronin6@unl.edu

Zee

- Room Reservations
- Door Access
- Class Edits
- Permission Codes
- Building Maintenance
- General Office
- Inquiries



Jules



jmeyers19@unl.edu

- Website Updates
- Weekly Wednesday
- Email Listservs
- Event Planning
- Purchasing Needs
- Facilities Requests



Zee & Jules have been working together to decide the best points of contact for common questions and requests. To help ease confusion, Jules made this helpful chart breaking down different aspects of each of their jobs. Please let either Jules or Zee know if you have any questions!

Congratulations to **Dr. Andy Garbacz**, a UNL School Psychology program graduate who was selected as the next editor of the Journal of School Psychology (JSP). He will begin his term as Editor Elect in January of 2024, and will serve as Editor of the journal from January 2025 through 2029. Dr. Garbacz is currently an Associate Professor at the University of Wisconsin-Madison and Co-Chair of the School Psychology Program.

CONGRATULATIONS

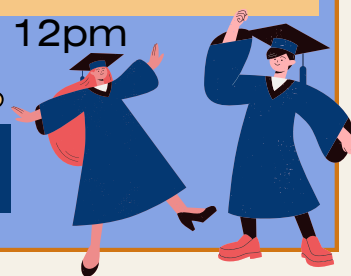


Ken Kiewra's
"Be a More Productive Scholar"
continues this week!
Write Like a Star Scholar

November 2nd at 12pm

Interested? Want to learn more?

[Click HERE!](#)





This event is free to attend for approved participants. Applications close on November 3rd.

Participants will learn more about the role of colonization and historical trauma in behavioral health training, as well as learn and define what it means to decolonize training & supervision. They will also examine the competing and conflicting worldviews of both supervisors and supervisees experienced during training & supervision.

Apply using this link: bit.ly/DecolonizingTraining
Questions? Contact midamerica@mhttcnetwork.org

Eight Lessons From My Research on Creativity
By Robert J. Sternberg
Want to become more creative? Try cultivating courage, perseverance, humility, ethics, and purpose.
[READ MORE >>](#)

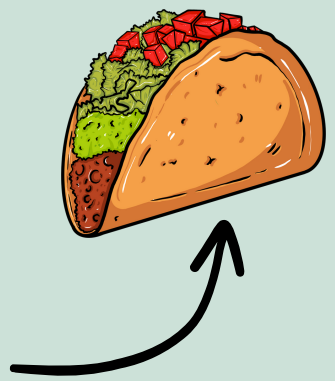


LET'S TALK
CEHS
Join Dr. Alvarez for a discussion of transnational Mexican foodways and literacy practices, focusing on how communities build connections across borders and find strength in traditions, ancestry, and care, en confianza.

TACO LITERACIES:
MEXICAN FOODWAYS AND CULTURAL IDENTITY
@TACOLITERACY ON INSTAGRAM
WWW.STEVENPAULALVAREZ.NET
REGISTER AT **NOV. 1, 2023**
6-7:30PM
ZOOM
QUESTIONS? CONTACT KARA.VIESCA@UNL.EDU
DR. STEVEN ALVAREZ
PROFESSOR OF ENGLISH
ST. JOHN'S UNIVERSITY



To register, visit [THIS WEBSITE](#) or click the taco icon.



Upcoming Webinars



SCCAP PRESENTS: CLINICAL PRACTICE INSTITUTE SESSION 2

Teen Social Media Use and Mental Health: Working Collaboratively with Parents and Teens

PRESENTED BY:



Jessica Hamilton, PhD
Candice Biernesser, PhD

FRIDAY, NOV 3
12PM - 3PM EST



3 CE CREDITS
FOR ATTENDEES



PROFESSIONALS \$50
STUDENTS \$20
SCCAP MEMBERS ONLY

[CLICK TO REGISTER FOR CPI](#)

Please contact admin@sccap53.org if you need any special accommodations. ASL Services will be offered.

Society for Child and Family Policy and Practice

Division 37 of the American Psychological Association



Addressing the Trauma of Undocumented Immigrant Children and Families

Charissa D. Pizarro, PsyD, RPT
Psychological Services LLC Private Practice

November 3, 2023
Noon-1pm EST/9-10am PST

Overview:

Overview: Animosity toward immigrants without authorization to be in the U.S. has increased. The new strict immigration policy enforcements have resulted in more detentions and deportations which are associated with a cascade of sequelae from family separations and compounded trauma. Many children under the age of 4 years old have yet to find parents who may have already been deported, with almost 150,000 unaccompanied minors at the U.S.-Mexico border during fiscal year 2021 alone. Atrocities from earlier policies are a call to action not only to policymakers but also to mental health professionals to address the adverse psychological effects that ensue from such events in a culturally competent manner. Challenging migration trajectories have major implications for immigrant children and families. In addition to the cumulative trauma experienced by children and families before, during, and after migration, the aftermath of the pandemic has compounded hardships for already fragile families. To address the complex issues that confront immigrant families, this seminar will present trauma-informed best practices to address the trauma incurred by undocumented immigrants that may have begun in their country of origin, the trauma experienced on their journeys to the U.S., and the trauma encountered upon entering the country. Empowering families and fostering resilience when feasible will also be addressed as well as the implications for policy and advocacy.

Learning Objectives:

1. Define cultural competence and cultural humility and explain how one's own cultural values, biases, and privilege may affect clinical work.
2. Describe a hypothetical immigrant's journey and cite four specific risks and exposures they face before and after entering the United States that can impact mental health.
3. Explain how to apply a culturally sensitive and trauma-informed care framework to a case example of an undocumented immigrant.

Psychologists are the intended audience; Instructional Level: Intermediate; 1 CE Credit

Registration closes November 2, 2023 at 9pm EST.

Fees: NO CE Credits - FREE; 1 CE Credit - \$15 (Division 37 members)/\$35 (non-Div 37 members).

Registration is required. Please follow these steps:

1. [Register here](#) for the webinar to receive the Zoom link.
2. [Click here](#) only if you also want to earn and pay for CE credits (a SEPARATE STEP from registering).

There are no conflicts of interest or commercial support to report for this program. Division 37: Society of Child and Family Policy and Practice is approved by the American Psychological Association to sponsor continuing education for psychologists. Division 37: Society of Child and Family Policy and Practice maintains responsibility for the program and its content.
For questions or inquiries, please contact the Division 37 CE Chair, Dr. Joaquin Borrego, Jr. at Div37CE@gmail.com.

AERA-NSF GRANTS PROGRAM

The AERA-NSF Grants Program is currently accepting proposals for both its Dissertation and Research Grants. With support from the National Science Foundation (NSF), the Program provides dissertation grants to graduate students and small research grants to doctoral level scholars using large-scale data sets in their research. The aim of the program is to advance fundamental knowledge of relevance to STEM education policy, foster significant science using education data, promote equity in STEM, and build research capacity in education and learning.

AERA DISSERTATION GRANTS: Click [HERE](#) for more information

AERA RESEARCH GRANTS: Click [HERE](#) for more information.

Proposal Deadline:
November 20

Questions? Please reach out to the AERA-NSF Grants Program via email at grantsprogram@aera.net or by phone at 202-238-3200

The Society of Clinical Child and Adolescent Psychology/APA Division 53 is committed to the development of its student members and we are proud to offer the Donald Routh Dissertation Grants.

The Routh Dissertation Reimbursement Grant provides support for student research that shows promise to add significantly to the research literature in the area of clinical child and adolescent psychology. Annually, up to four students will receive reimbursement of \$2,500 for research purposes. The Award comes in the form of reimbursement for dissertation-related expenses. Two additional Honorable Mention Awards of \$100 each will also be granted.

ELIGIBILITY:

- The student's dissertation proposal must have been approved by their advisor and their program faculty at the time of submission of the application.
- The applicant must be a student member of SCCAP and enrolled in APA, PCSAS, and/or CPA approved doctoral program at the time of application.

For application requirements, please visit THIS WEBSITE:

<https://sccap53.org/routh-dissertation-grant/>

Submission Deadline: January 13, 11:59pm Eastern Time

November 2023

Happiness & Curiosity Calendar

This month, be curious about others, yourself, and the world.
Keep up with the latest on the science of connection, compassion, and happiness by [subscribing to our newsletters](#).

SUNDAY	MONDAY	TUESDAY	WEDNESDAY	THURSDAY	FRIDAY	SATURDAY
<p>From the GGSC's Scott Shigeoka:</p> <p>SEEK</p> <p>How <i>Curiosity</i> Can Transform Your Life and Change the World</p> <p>SCOTT SHIGEOKA</p> <p>On Sale November 14, 2023</p> <p>Open your mind, strengthen your relationships, and embark on a journey of healing in this "timely bridge for our divided world" (Adam Grant) from an internationally recognized curiosity expert.</p>	<p>GGSC Greater Good Science Center</p> <p>ggsc.berkeley.edu greatergood.berkeley.edu</p> <p>5 Ask for help when you need it.</p> <p>6 Be playful.</p> <p>12 Curious? Make a list of your 10 favorite questions to ask people.</p> <p>19 Be kind to others.</p> <p>26 Reflect on the people who support you.</p>	<p>7 Curious? Take a walk and pay attention to what you hear, see, and smell.</p> <p>14 Do something relaxing.</p> <p>21 Curious? Set an intention to be curious in a conversation.</p> <p>28 Create a positive gender identity.</p>	<p>1 Curious? Practice saying "Tell me more" in conversation.</p> <p>8 Consider whether you might be wrong in an argument.</p> <p>15 Take action for a cause you care about.</p> <p>22 Ask people for advice on how you could improve.</p> <p>29 Take 5 minutes to care for your body.</p>	<p>2 Work for peace in the world.</p> <p>9 Sign up for our Pathway to Happiness program.</p> <p>16 Curious? How curious are you? Take our quiz to find out.</p> <p>23 Write down five things you're grateful for today.</p> <p>30 Seek out moments of awe.</p>	<p>3 Allow yourself to feel negative emotions.</p> <p>10 Talk with kids about war and peace.</p> <p>17 Reflect on the values that matter to you.</p> <p>24 Curious? See what you can learn from the difficult moments of life.</p>	<p>4 Be courageous and stand up for your ideas.</p> <p>11 Watch an uplifting movie.</p> <p>18 Give yourself a hug.</p> <p>25 Open up to someone emotionally.</p>

If you have something you would like posted in Weekly Wednesday, please email Jules with your request by 2pm Tuesday!



Jules' Office Hours & DEMAC Library Hours



Thursday 11/2: 1-2pm

Friday 11/3: 10-11am

Monday 11/6: 2-3pm

Tuesday 11/7: 2-3pm

Wednesday 11/8: 3-4pm



The DEMAC library is open during Jules' office hours. If you need to access the library at an alternate time, please email Jules to set up an appointment!



Susan Swearer, Ph.D., LP
Chair

Department of Educational Psychology
University of Nebraska-Lincoln

Upcoming Office Hours

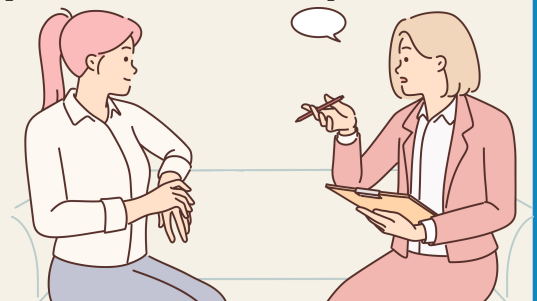
Thursday 11/2: 10-11am

Friday 11/3: 10-11am

Monday 11/6: 1-2pm

Tuesday 11/7: 10-11am

Wednesday 11/8: 11am-12pm



November 8, 2023

Volume 100

Weekly Wednesday

Department of Educational Psychology

What's Inside:

- 1) Top Stories
- 2) Announcements
- 3) News
- 4) Diversity, Equity, & Inclusion
- 5) Clinic Corner
- 6) The Week Ahead



100

It's the 100th volume of WEEKLY WEDNESDAY!

Thank you to all who take the time each week to read the Weekly Wednesday. Jules has been hard at work revamping the newsletter, and they've had the best time! Stay tuned to watch us grow!

GUESS WHAT!



CEHS hosted a staff decorating contest for Halloween, and we won! Thank you to Zee, Kellan, and Jules for their hard work decorating our office! Congratulations!



SPEAKING OF WINNERS...

We loved seeing all of your Halloween costumes! Thank you to all who participated in our costume contest. You are so creative!



Congratulations to our winner

MATT BROOKS!

Congratulations Matt! You win our coffee shop card. Please email Jules to let them know of your coffee preference!

We absolutely loved your goldenrod costume. For those who don't know, the goldenrod is Nebraska's state flower!



Top Stories

Announcements



THANK YOU!!!



Thank you to all who attended the DLS ice skating event! You all are so wonderful and brave for trying new things. May these joys continue through the rest of this season!



Dr. Bryan Wang is a faculty member in the College of Journalism & Mass Communications. He has two GRA positions available, both starting in Spring 2024.

Visit <https://cehs.unl.edu/edpsych/graduate-assistantships/> to find out more about the assistantships available for our students!



GRADUATE TRAVEL AWARDS FOR SPRING 2024 ARE NOW OPEN!

If you are attending a conference or workshop in Spring 2024, consider applying for a GTAP award! The Graduate Travel Awards Program (GTAP) offers \$600 for domestic travel and \$800 for international travel. You can submit your application from October 13th to November 30th through NuRamp. For any inquiries, you can consult the GTAP Special Rules or reach out to us at gtap@unl.edu.

More details at: <https://www.unl.edu/gsa/graduate-travel-awards-program-gtap>



EDPS GAME NIGHT

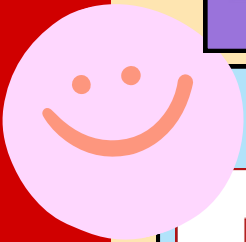


WEDNESDAY, NOV. 15
5-7PM @ THE CLINIC &
COURTYARD

BRING YOUR FAVORITE BOARD GAME OR CARD GAME AND JOIN US AT THE CLINIC (GROUND FLOOR OF TEAC) FOR A NIGHT OF FUN AND FRIENDS. SNACKS WILL BE PROVIDED!

C₃ L₁ I₁ C₃ K₅ H₄ E₁ R₁ E₁
TO RSVP BY MONDAY, NOV. 13TH!

PS - LEMON (KELLAN'S CAT) WILL BE THERE!



Enjoy Supporting Students?
COME CELEBRATE
National School Psychology Week
Get some freebies and learn about supporting students in schools
Thursday, Nov. 9 11-1 pm
City Campus Union
@unischpsych @UNL_school_psychology

This year's **National School Psychology Week (NSPW)** is this week from November 6–10! This year's theme is "Let's Grow Together," inspired by the importance of both personal and shared strengths in our growth as individuals and school communities in every season of life. The theme recognizes every aspect of growth as fundamental to effective learning environments and to school psychologists' role in supporting student well-being and learning.

Read more about the inspiration behind the theme [here](#).

Upcoming events include:

Wednesday, November 8

- Sam Kesselring will be taking over the Instagram page to show a day as a fifth year in the program and host a Q&A session.

Thursday, November 9

- Shay Brown will be taking over the Instagram page to show the day of a first year in the program and promote the NSPW Informational Booth.
- The Student Affiliates of School Psychology (SASP) will be hosting an informational booth in the City Campus Union from 11 am to 1 pm.

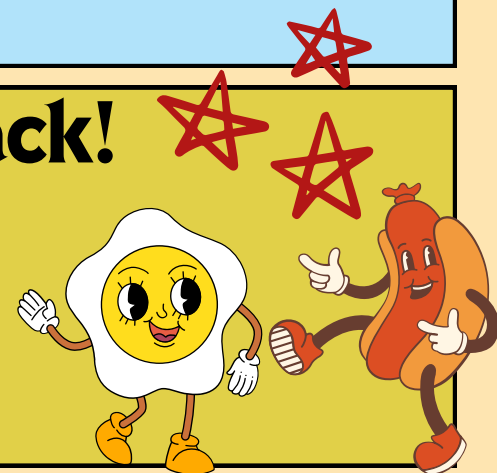
Friday, November 10

- Libby Brower will be taking over the Instagram page to show a day as a fourth year in the program.

Meal Kit Mondays are Back!

Tired of deciding what to have for dinner? Take a little stress away from yourself and check out Meal Kit Monday! All kits include a recipe card to assist with preparation. Participants provide utensils, cooking spray and minor chopping, mixing and baking to complete the meal. Each meal costs \$25 and serves four.

Visit <https://go.unl.edu/mealkitmonday> to learn more.



APA Was featured in “Nature” this week upon the release of the new EDI journal reporting guidelines!

Click [HERE](#) to read *Don't overlook race and ethnicity: new guidelines urge change for psychological research*

The Journal Article Reporting Standards for Race, Ethnicity, and Culture (JARS–REC) are new standard incorporated into the APA Style JARS compendium. They offer instructions for addressing race, ethnicity, and culture within scientific manuscripts. These guidelines stem from the APA's 2021 Apology to People of Color, which acknowledged the historical role of the APA in perpetuating racism, racial discrimination, and human hierarchy in the United States. Specifically, the APA Board of Scientific Affairs, in collaboration with the Publications and Communications Board, established the Working Group for Journal Reporting Guidelines for Equity, Diversity, Inclusion, and Justice in Psychological Science. This group included liaisons from several psychological associations, and the final product has been approved as a collaborative effort conducted in cooperation with the Association for Behavioral and Cognitive Therapies, the Coalition for the Advancement & Application of Psychological Science, the Society for Behavioral Medicine, the Society for Neuroscience, the Society for Personality and Social Psychology, the Society for Research in Child Development, and the Society for Research on Adolescence.

The need for JARS–REC arises from the longstanding recommendation by experts within the field of psychology to incorporate race, ethnicity, and culture into research, ensuring the contextualization of generalizability and cultural relevance. The JARS–REC marks a significant stride in addressing the longstanding gaps related to race, ethnicity, and culture in psychological science by providing clear guidelines for authors, reviewers, and editors.

Here are links for all the info!

- The JARS-REC APA Style Homepage: <https://apastyle.apa.org/jars/race-ethnicity-culture>
- JARS-REC Executive Summary: <https://apastyle.apa.org/jars/race-ethnicity-culture-executive-summary>
- JARS-REC Table: <https://apastyle.apa.org/jars/rec-table-1.pdf>



DEM MAC is in the process of planning for potential healing spaces for students, faculty, and staff. As part of our logistical planning, we would like to get a rough estimate of who would be interested in the healing spaces. Please fill out the Google Form linked below noting your interest.

Google Form:

tinyurl.com/DEM MAC-HealingSpaces



applications are open!

Youth Development Paid Internship

Apply at [familyservicelincoln.org/careers/!](http://familyservicelincoln.org/careers/)
join us in helping families thrive



Family Service Lincoln is now taking applications for their Paid Youth Development Internship in the **Spring Semester of 2024!**
This internship is perfect for students who are looking to gain experience working with youth ages K-8 in a classroom setting.

As Lincoln's largest before and after-school care provider, FSL provides a unique opportunity for interns to work throughout Lincoln Public Schools, gaining knowledge in curriculum development, incident management, leadership, and much more - all while building impactful relationships with youth, families, school personnel, partners, and the community. Additionally, interns will have access to exclusive training, professional conferences, and professional development coaching.

Internships run for one semester with an expectation to work a minimum of 10 hours per week, beginning the week of January 15th.

Apply at familyservicelincoln.org/careers

Please contact Shayne Pearson (spearson@familyservicelincoln.org) with any questions.

FREE Zoom Training: Abuse, Neglect, & Poverty



with Jonathan Davis

Reporting Child Abuse and Neglect can be daunting, the videos in this training will help give an idea of what to expect when making that call. You making that call is important enough. What we have realized is that there are numerous reasons that families will need support. A major factor that is very apparent in our country is poverty. Poverty is something that we will not fix overnight. This training will not solve the problem of poverty or stop children from being abused. It will give you an insight to what things you need to look for and how to work with those living in poverty.

**November 29
9am-12pm (Central)**

REGISTER NOW >



Want to make a room reservation?

Zee has created a link to organize room reservations to save everyone from emails! The QR code is posted throughout TEAC 114. You can also access the room reservation portal by visiting the website below.

Please give Zee 24-48 hours notice for all room request

Click the plant or visit <https://tinyurl.com/TEACRoomRes> to request a room reservation.



If you have something you would like posted in Weekly Wednesday, please email Jules with your request by 2pm Tuesday!



Jules' Office Hours & DCMAC Library Hours

REMINDER! All books are due by December 15th

Thursday 11/9: 2-3pm

Friday 11/10: 10-11am

Monday 11/13: 2-3pm

Tuesday 11/14: 3-4pm

Wednesday 11/15: 3-4pm

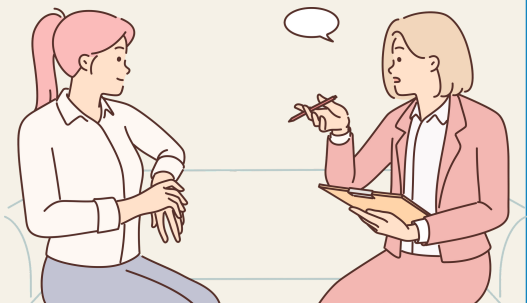


Susan Swearer, Ph.D., LP
Chair

Department of Educational Psychology
University of Nebraska-Lincoln

Upcoming Office Hours

Thursday 11/9: 2-3pm
Friday 11/10: 1-2pm
Monday 11/13: 1-2pm
Tuesday 11/14: 4-5pm
Wednesday 11/15: 10-11am



November 15, 2023

Volume 101

Weekly Wednesday

Department of Educational Psychology

What's Inside:

- 1) Top Stories
- 2) Announcements
- 3) News
- 4) Diversity, Equity, & Inclusion
- 5) Clinic Corner
- 6) The Week Ahead



APA Div. 17 Section for the
Advancement of Feminist Psychology
Invites You To A

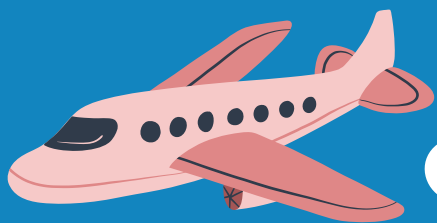
Feminist Analysis of Barbie (2023)

An Interactive Discussion of the
Barbie Movie
On Zoom
November 16th, 5:30PM EST



RSVP here
to get Zoom link!

Tap the shoes
to register!



**GRADUATE
TRAVEL
AWARDS FOR
SPRING 2024**

If you are attending a conference or workshop in Spring 2024, consider applying for a GTAP award! The Graduate Travel Awards Program (GTAP) offers \$600 for domestic travel and \$800 for international travel. You must submit your application by November 30th through NuRamp. For any inquiries, you can consult the GTAP Special Rules or reach out to us at gtap@unl.edu.

More details at:

<https://www.unl.edu/gsa/graduate-travel-awards-program-gtap>





EDPS SUPER SWAP

WINTER WARMTH EDITION
THURSDAY
DECEMBER 7TH
STAY TUNED FOR MORE DETAILS!

Jules & Zee are excited to announce they are hosting the first ever EDPS Super Swap! Keep an eye on your email for more information. You won't want to miss this!

CYAF 930B

Grant Writing in
Education, Health and
Social Sciences

Dr. Alex Mason
Spring 2024
3 credit hours
Tuesdays 9-11:50am

COURSE DESCRIPTION

In this course, you will develop the ability to frame research ideas within broader scientific context and write effective grant proposals to support high impact research in the education, health, and social sciences. You will develop the skills needed to identify grant funding opportunities as well as draft, revise, and review grant proposal documents. This is a hands-on course. You will identify an appropriate funding source and write your own proposal on a topic of your choice, which may include your dissertation. You also will provide reviews/critiques of your classmate's proposal documents and learn about the grant review process by participating in a mock review group.



After completing this course, you will be able to...

1. Demonstrate an ability to think strategically about significant gaps worthy of investigation.
2. Identify suitable funding sources and evaluate funding opportunity announcements (FOAs).
3. Develop and refine a proposal concept paper.
4. Draft key components of a grant proposal (e.g., title/abstract, specific aims, background and significance, innovation, research design/methods).
5. Review grant narrative documents and provide constructive critiques.
6. Receive critical feedback and prepare revised proposal documents.
7. Manage the budget process and supporting documentation (e.g., human subjects protections plan, biosketch/CV) of a grant application.

DOCTORAL STUDENTS! CHECK OUT THIS CLASS OFFERED BY CYAF THIS SPRING!

THANKFUL

DON'T FORGET!

UNL CAMPUS WILL BE CLOSED ON THURSDAY & FRIDAY NEXT WEEK IN OBSERVANCE OF THANKSGIVING. ALL BUILDINGS WILL BE LOCKED AND CLASSES WILL NOT MEET.

FOR UNDERGRADUATE STUDENTS INTERESTED IN SCHOOL PSYCHOLOGY:

In recent years, we've held an annual undergraduate recruitment and mentorship program at the Annual NASP Convention where we invite undergraduates from underrepresented racial & ethnic backgrounds who are considering graduate work in School Psychology to attend the NASP conference for a day. Their registration fee is waived, and they are matched with graduate student mentors. Our committee hosts the day with opening and closing remarks and invites participation from the various graduate training programs.



The event will take place **February 14-17 in New Orleans, Louisiana.**

Please note: travel expenses are not included.

Attend the NASP 2024 Convention for FREE!



ABOUT

Are you interested in psychology and children? Consider becoming a school psychologist! School psychologists apply expertise in mental health, behavior, and learning, to help youth succeed socially, academically, behaviorally, and emotionally. They partner with families, teachers, school administrators and others, to create healthy learning environments that strengthen connections and outcomes.

NASP 2024

Who are School psychologists?
<https://www.nasponline.org/about-school-psychology/who-are-school-psychologists>

JOIN US
FEBRUARY 14-17 | New Orleans, LA
REGISTRATION IS OPEN



<https://www.nasponline.org/professional-development/2024-nasp-annual-convention>

The APA Division 16 (School Psychology) Committee for Ethnic Minority Affairs and the National Association of School Psychologists (NASP) are partnering to invite undergraduate students from racially and/or ethnically marginalized groups to attend the NASP convention. If you are a student from an underrepresented group interested in school psychology, please apply to join us at the NASP convention this year! The day of the convention, mentors will be available to assist, answer questions, and provide information.

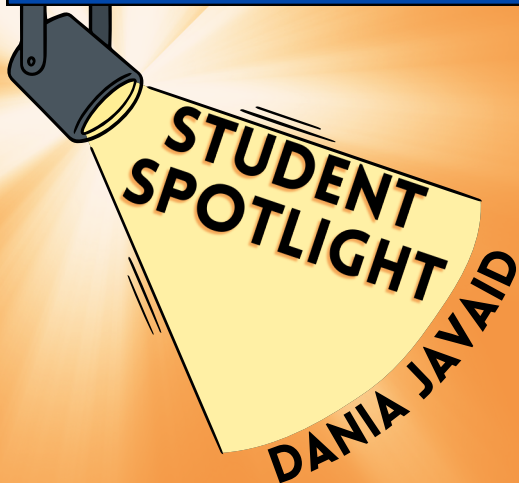
Applications are due by November 30th!

To apply, visit

https://umdsurvey.umd.edu/jfe/form/SV_9Y4DHJwU4jX3wuW

Contact Anna Long Ph.D. for more information at along@lsu.edu

CLICK HERE TO LEARN MORE ABOUT THE NASP 2024 ANNUAL CONVENTION!



Dania is a second year PhD student in the DLS program. This past weekend she attended the Fulbright Pakistan Student Seminar. Dania was one of ten students from US universities that was selected for mentoring the 150 students of the 2023 cohort!



Congratulations, Dania! This is amazing! The work you are doing is absolutely incredible, and we are so thankful to have you as a part of our department. The next time you see Dania, be sure to ask her about this incredible experience.



DEMAC HEALING SPACES

DEMAC IS IN THE PROCESS OF PLANNING FOR POTENTIAL HEALING SPACES FOR STUDENTS, FACULTY, AND STAFF. AS PART OF OUR LOGISTICAL PLANNING, WE WOULD LIKE TO GET A ROUGH ESTIMATE OF WHO WOULD BE INTERESTED IN THE HEALING SPACES. PLEASE FILL OUT THE GOOGLE FORM LINKED IN THE BOX TO THE RIGHT NOTING YOUR INTEREST.

GOOGLE FORM:
[TINYURL.COM/DEMAC-HEALINGSPACES](https://tinyurl.com/DEMAC-HEALINGSPACES)



Indigenous Studies Program

WEDNESDAY, NOVEMBER 29
6:00-7:00PM
INDIGO BRIDGE BOOKSTORE

Our friends at the Institute for Ethnic Studies are hosting an evening event at Indigo Bridge Bookstore focused on Indigenous food sovereignty with an opportunity to try some delicious Native food. The event is from 6-7pm on Wednesday, November 29th. The event is hosted by the Institute for Ethnic Studies' Indigenous Studies program and is connected to efforts to bring an Indigenous garden to UNL. Anthony Warrior, Absentee Shawnee and Mvskoke, a chief and tribal educator here in Nebraska will cater the event and discuss Indigenous food sovereignty and the importance of decolonizing our diets. Anthony will be serving bison, squash, hominy, and/or other seasonal Indigenous foods.

EVERYONE IS WELCOME!

DEMAC invites you to join a social event at Mana Games on Sunday, December 10th from 12:00 PM to 4:00 PM! This is a charming café located a few minutes from UNL's campus where you can grab coffee/snacks and play a ton of games with friends. Family members are welcome, too, of course!



Mana Games is located in the Haymarket near Ivanna Cone
Entry fee: \$5

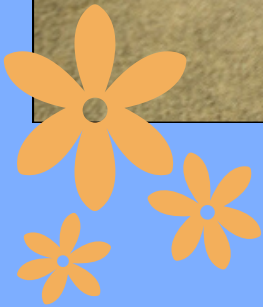


DEMAC Game Night
 Mana Games Café
 Sunday, December 10th at 12-4
 RSVP: tinyurl.com/ManaGames-DEMAC

Interested? Please RSVP by Monday, November 20th using the link below:

www.tinyurl.com/ManaGames-DEMAC

We're in NEBRASKA TODAY!

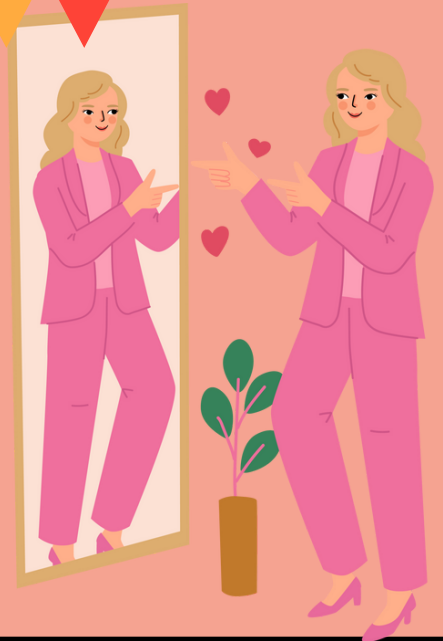


Our Counseling and School Psychology Clinic offers low-cost, sliding scale mental health counseling and ADHD assessment services for children, adolescents and adults. Student therapists provide therapy to individuals under the supervision of advanced students and a licensed psychologist.

Check out the **NEBRASKA TODAY** article [HERE](#)

KINDNESS CORNER: CELEBRATE YOURSELF!

Brainstorm 5 things you like about yourself. Write each one down on a sticky note or piece of paper and put them up on your bathroom mirror, fridge, computer stand, etc. Let yourself be loved! You are amazing!



CLICK HERE FOR A RESOURCE FROM THE NATIONAL ASSOCIATION OF SCHOOL PSYCHOLOGISTS (NASP) ON "CULTURAL CONSIDERATIONS TO SUPPORT STUDENTS AFFECTED BY THE VIOLENCE IN ISRAEL AND PALESTINE"

Want to make a room reservation?

Zee has created a link to organize room reservations to save everyone from emails! The QR code is posted throughout TEAC 114. You can also access the room reservation portal by visiting the website below.

Please give Zee 24-48 hours notice for all room request

Click the plant or visit <https://tinyurl.com/TEACRoomRes> to request a room reservation.



If you have something you would like posted in Weekly Wednesday, please email Jules with your request by 2pm Tuesday!



Jules' Office Hours & DCMAC Library Hours

REMINDER! All books are due by December 15th

Thursday 11/16: 1-2pm

Friday 11/17: 10-11am

Monday 11/20: 2-3pm

Tuesday 11/21: 3-4pm

Wednesday 11/22: 1-2pm



Susan Swearer, Ph.D., LP
Chair

Department of Educational Psychology
University of Nebraska-Lincoln

Upcoming Office Hours

Thursday 11/16: 2-3pm

Friday 11/17: 11:30am-12:30pm

Zoom Only; email Sue for link

Monday 11/20: 1-2pm

Tuesday 11/21: 11am-12pm

Wednesday 11/22: N/A

Out of Office



November 22, 2023

Volume 102

Weekly Wednesday

Department of Educational Psychology

What's Inside:

- 1) Top Stories
- 2) Announcements
- 3) News
- 4) Diversity, Equity, & Inclusion
- 5) Clinic Corner
- 6) The Week Ahead





The EDPS gingerbread building contest is back!

Each program will receive a gingerbread house to decorate however they would like. You have until DECEMBER 11th to turn in your gingerbread creation to Jules or Zee. Faculty & Staff will vote on their favorite builds. The winning program will receive a pizza party during the spring semester.

The winning program will be announced in Weekly Wednesday on December 20.

Have fun, and get creative!
We can't wait to see what y'all make!



Reminder: UNL will be closed November 23 and 24th. Have a safe, relaxing, and wonderful break! We hope this week provides everyone with time to give thanks and gratitude for friends and family. We also hope the long weekend provides some space to reflect and rejuvenate.

ATTENTION

DOCTORAL

STUDENTS

KELSEY SIMS IS LEAVING THE UNIVERSITY TO TAKE A NEW POSITION. HER LAST DAY AT UNL IS DECEMBER 1ST.

For the remainder of this term, continue to email your documents to Kelsey. Her emails are being forwarded to graduatedocuments@unl.edu

Spring 2024 and beyond: email all doctoral documents to graduatedocuments@unl.edu



All master's paperwork should continue to be sent to Terri Eastin as usual.

EDPS Super Swap

Winter Warmth Edition

Brought to you by Jules and Zee

THURSDAY DEC. 7

CPEH 161

WE ARE EXCITED TO HOST OUR FIRST EVER EDPS SUPER SWAP ON DECEMBER 7TH! THE MAIN IDEA IS THIS: AS THE WINTER MONTHS APPROACH, PEOPLE ARE CLEANING OUT THEIR CLOSETS AND PULLING OUT CLOTHES THEY NO LONGER LOVE, WANT, OR NEED. WE ALSO HAVE STUDENTS WHO ARE MOVING HOME AFTER GRADUATION WHO CANNOT TAKE ALL OF THEIR BELONGINGS WITH THEM.

THIS SUPER SWAP WILL FEATURE CLOTHING, FURNITURE, AND HOUSEWARE ITEMS, PRIMARILY FOCUSING ON ITEMS NEEDED FOR THE COLD WINTER MONTHS, SUCH AS COATS, SWEATERS, SCARVES, HATS, AND LONG TROUSERS (NO SHORTS).

THIS EVENT IS FOR EVERYONE AND IS COMPLETELY FREE TO ATTEND! IF YOU ARE A STUDENT IN NEED OF SPECIFIC WARM CLOTHING FOR THE WINTER, PLEASE BE SURE TO FILL OUT THE GOOGLE FORM BELOW TO INDICATE YOU ARE IN NEED OF ASSISTANCE FROM OUR "WINTER WARMTH COLLECTION"

USE THE FORMS BELOW TO FIND MORE INFORMATION, INCLUDING ACCEPTABLE DONATIONS, & HOW TO DONATE FURNITURE TO THE EVENT!

EDPS SUPER SWAP WINTER WARMTH EDITION

DONATION GUIDELINES

YES!

- SWEATERS
- SCARVES
- WINTER COATS
- CARDIGANS
- JEANS
- GLOVES
- BOOTS
- NEW SOCKS
- LONG TROUSERS
- STURDY SNEAKERS
- BOOKSHELVES
- CHAIRS
- COUCHES
- SIDE TABLES
- BLANKETS
- DISH SETS

*Belts, shoes, and accessories are welcome, as long as they are in good condition.

NO!

- TANK TOPS
- SHORTS
- UNDERGARMENTS
- SUNDRESSES
- SANDALS
- USED SOCKS
- "SUMMER CLOTHES"

TO DONATE FURNITURE, EMAIL JULES OR SCAN THE QR CODE BELOW.

PLEASE INCLUDE THE FOLLOWING INFORMATION:

- PHOTOGRAPH(S) OF ITEM
- MEASUREMENTS OF ITEM, SUCH AS HEIGHT, WIDTH, AND LENGTH
- CONTACT INFORMATION FOR PICKUP PURPOSES

PLEASE NOTE: FURNITURE MAY BE SOLD FOR A SMALL FEE. IF YOU WISH TO ATTACH A FEE TO YOUR FURNITURE ITEMS, PLEASE INCLUDE THAT INFORMATION IN YOUR COMMUNICATION.

All clothing and furniture donations must be free of stains, rips, and tears.

If you are unsure whether an item of yours can be donated, please email Jules and Zee for clarification.



LEARN MORE!

[HTTPS://GO.UNL.EDU/
EDPSSUPERSWAP](https://go.unl.edu/EDPSSUPERSWAP)

DONATE FURNITURE!

[HTTPS://GO.UNL.EDU/SUPERSWAP_FURNITURE](https://go.unl.edu/superswap_furniture)

WE WILL BEGIN TAKING DONATIONS ON MONDAY, NOVEMBER 27 AND THE BINS WILL REMAIN OPEN UNTIL DECEMBER 6TH AT 1PM.

PLEASE BRING YOUR DONATIONS TO TEAC 114 AND PLACE THEM IN THE PROVIDED BINS. IF YOU ARE DONATING HOUSEWARE ITEMS, PLEASE PACKAGE THEM IN A SMALL BOX OR BAG.

IF YOU HAVE QUESTIONS PERTAINING TO DONATIONS, OR GENERAL QUESTIONS ABOUT THE EVENT, PLEASE EMAIL JULES AND ZEE!

Announcements

Upcoming Spring 2024 Classes:

The Psychology Department is offering **PSYC 929: Social, Cognitive, and Affective Neuroscience** during the Spring 2024 semester. This course counts towards the Educational Neuroscience Certificate (and Additional Coursework in DLS).



If you have any questions, please contact Dr. Maital Neta at maitalneta@unl.edu.

Social, Cognitive, and Affective Neuroscience PSYC 929

Spring 2024– Day and Time TBA
Instructor: Dr. Maital Neta

- How do people interact in groups?
- Course Purpose: To integrate theories and methods of cognitive neuroscience to focus on the neurological foundations of social (theory of mind, empathy) and affective (feeling, evaluative) processes and how they interact with each other.
- Counts toward the Educational Neuroscience Certificate



CYAF 974

Dr. Julia Torquati (Professor, CYAF and Buffett Early Childhood Institute) is teaching a Spring 2024 graduate seminar on infant and early childhood mental health.

Class Format:

This is an in-person class with a **weekly meeting from 1-3:50 pm on Wednesday**. Students are expected to complete assigned readings and videos prior to class in order to be prepared to participate constructively in seminar discussions. The class is divided into four modules guided by the following questions:

- What is infant and early childhood mental health?
- What developmental processes contribute to infant and early childhood mental health, and how?
- What are competencies of infant mental health practitioners?
- What practices, programs, and interventions are effective for promoting infant and early childhood mental health?



If you have any questions, please contact Dr. Julia Torquati at jtorquati@unl.edu

STUDENT SPOTLIGHT

CONGRATULATIONS TO LIBBY BROWER (SCHPSYCH), EMMA GUSTAFSON (SCHPSYCH), AND JAY JEFFRIES (QQPM) FOR BEING AWARDED CEHS STUDENT PROFESSIONAL DEVELOPMENT GRANTS TO SUPPORT TRAVEL TO A PROFESSIONAL CONFERENCE! GOOD LUCK WITH YOUR RESEARCH. THANKS FOR REPRESENTING THE DEPARTMENT OF EDUCATIONAL PSYCHOLOGY!

EDPS Faculty

CEHS is looking for faculty to spotlight in their recruitment efforts. If you're interested, please schedule a video profile time with Dan Hartig: DHartig2@iunl.edu.

DEMAC HEALING SPACES



DEMAC IS IN THE PROCESS OF PLANNING FOR POTENTIAL HEALING SPACES FOR STUDENTS, FACULTY, AND STAFF. AS PART OF OUR LOGISTICAL PLANNING, WE WOULD LIKE TO GET A ROUGH ESTIMATE OF WHO WOULD BE INTERESTED IN THE HEALING SPACES. PLEASE FILL OUT THE GOOGLE FORM LINKED IN THE BOX TO THE RIGHT NOTING YOUR INTEREST.

GOOGLE FORM:
[TINYURL.COM/DEMAC-HEALINGSPACES](https://tinyurl.com/demac-healingspaces)



Indigenous Studies Program

WEDNESDAY, NOVEMBER 29
6:00-7:00PM
INDIGO BRIDGE BOOKSTORE

Our friends at the Institute for Ethnic Studies are hosting an evening event at Indigo Bridge Bookstore focused on Indigenous food sovereignty with an opportunity to try some delicious Native food. The event is from 6-7pm on Wednesday, November 29th. The event is hosted by the Institute for Ethnic Studies' Indigenous Studies program and is connected to efforts to bring an Indigenous garden to UNL. Anthony Warrior, Absentee Shawnee and Mvskoke, a chief and tribal educator here in Nebraska will cater the event and discuss Indigenous food sovereignty and the importance of decolonizing our diets. Anthony will be serving bison, squash, hominy, and/or other seasonal Indigenous foods.

EVERYONE IS WELCOME!

YOU ARE INVITED TO OUR EDPS Holiday Potluck

We invite you, your kids, and family to enjoy and celebrate the holidays with us! Bring a favorite or cultural dish to share.

~~~~~  
SATURDAY, DECEMBER 2ND  
12 PM-2PM : CEPH 227

IF YOU HAVE ANY QUESTIONS ,EMAIL PATRICIA  
PCARDELLINIDEALMEI2@UNL.EDU  
~~~~~



Dear EDPS Students, Faculty, & Staff:



As we approach the end of 2023, let's gather for a festive potluck to celebrate our wonderful community and the spirit of the holidays. We invite you to bring a favorite cultural dish to share. If you need any support to buy the ingredients or have any difficulty bringing something, please let us know. We will have plenty of food so please don't feel obligated to bring a dish!

We kindly request that you confirm your presence by November 29th. You can send an email to pcardellinidealmei2@unl.edu

We look forward to celebrating with you and your family. We will have appropriate space for kids and activities for them to do!

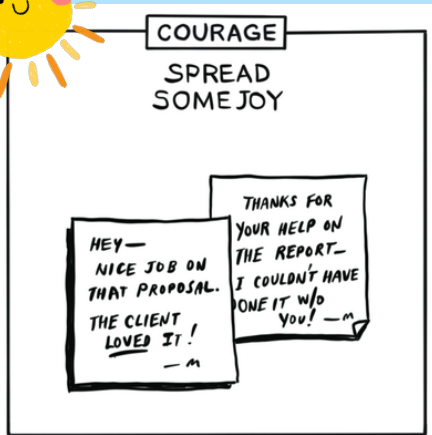
Holiday Tips for Grief Talk

Grief can be difficult to process at any time of the year, but the holidays pose new challenges and reminders of loss after the death of someone significant. Whatever you may be facing this season, Mourning Hope offers guidance on how we can talk about it, especially with the children in our lives.

The New York Life Foundation provides these tips for parents and caregivers:



1. Understand that family members grieve differently.
2. It's not so much what you say, but how you say it.
3. It's OK to be sad in front of your children.
4. Provide opportunities for kids to feel connected to their person.
5. Take good care of yourself.
6. Keep an eye out for signs that professional help may be needed.
7. Balance cherishing memories of the past with making new memories for the future.



SPREAD SOME JOY!

Spending time with family this week? Try writing them a note of gratitude for the impact they've had on your life! What do you love about them? What do you admire? Share some joy this holiday season with small acts of kindness!



Want to make a room reservation?

Zee has created a link to organize room reservations to save everyone from emails! The QR code is posted throughout TEAC 114. You can also access the room reservation portal by visiting the website below.

Please give Zee 24-48 hours notice for all room request

Click the plant or visit <https://tinyurl.com/TEACRoomRes> to request a room reservation.



If you have something you would like posted in Weekly Wednesday, please email Jules with your request by 2pm Tuesday!



Jules' Office Hours & DCMAC Library Hours

REMINDER! All books are due by December 15th

Thursday 11/23: **N/A**

Friday 11/24: **N/A**

Monday 11/27: **2-3pm**

Tuesday 11/28: **12-1PM**

Wednesday 11/29: **3-4PM**



Susan Swearer, Ph.D., LP
Chair

Department of Educational Psychology
University of Nebraska-Lincoln

Upcoming Office Hours

Thursday 11/23: **No Office Hours**

Friday 11/24: **No Office Hours**

Monday 11/27: **No Office Hours**

Tuesday 11/28: **10-11am**

Wednesday 11/29: **1-2pm**

Happy Holidays!



November 29, 2023

Volume 103

Weekly Wednesday

Department of Educational Psychology

What's Inside:

- 1) Top Stories
- 2) Announcements
- 3) News
- 4) Diversity, Equity, & Inclusion
- 5) Clinic Corner
- 6) The Week Ahead



EDPS SUPER SWAP

WE HAVE BEGUN TAKING DONATIONS FOR NEXT WEEK'S SUPER SWAP! PLEASE BRING YOUR ITEMS TO TEAC 114. WE WILL TAKE DONATIONS THROUGH DECEMBER 6.

DONATE FURNITURE!

[HTTPS://GO.UNL.EDU/SUPER SWAP_FURNITURE](https://go.unl.edu/super_swap_furniture)

LEARN MORE!

[HTTPS://GO.UNL.EDU/EDPSSUPERSWAP](https://go.unl.edu/edpsuperswap)

THE EVENT WILL TAKE PLACE ON THURSDAY DECEMBER 7TH FROM 10AM-4PM IN CPEH 161

If you have any questions, please see Jules or Zee!

The EDPS gingerbread building contest is back!

Each program will receive a gingerbread house to decorate however they would like. You have until DECEMBER 11th to turn in your gingerbread creation to Jules or Zee. Faculty & Staff will vote on their favorite builds. The winning program will receive a pizza party during the spring semester.

If you have yet to pick up your program's gingerbread kit, please stop by TEAC 114. You will find the gingerbread houses in the mailroom!

Have fun! Get silly! We can't wait to see your creations.

The winning program will be announced in Weekly Wednesday on December 20.

ATTENTION DOCTORAL STUDENTS

KELSEY SIMS IS LEAVING THE UNIVERSITY TO TAKE A NEW POSITION. HER LAST DAY AT UNL IS DECEMBER 1ST.

For the remainder of this term, continue to email your documents to Kelsey. Her emails are being forwarded to graduatedocuments@unl.edu

Spring 2024 and beyond: email all doctoral documents to graduatedocuments@unl.edu

ALL MASTER'S PAPERWORK SHOULD CONTINUE TO BE SENT TO TERRI EASTIN AS USUAL.

Top Stories

Sweater Weather Day



The GSA committee invites you to participate in a department-wide SWEATER WEATHER DAY on Thursday, December 7th.

Wear your comfiest, funky, goovy sweaters and bask in their warmth!

Be sure to stop by and say hi to Jules and Zee so they can see your sweaters!



Reminder → FALL 2023 METHODOLOGY APPLICATIONS SERIES

Featuring Carrie Clark, Ph.D., associate professor of educational psychology, and Amanda Prokasky, Ph.D., MAP Academy senior research specialist.

The Nebraska Academy for Methodology, Analytics and Psychometrics invites you to the final presentation of the Fall 2023 Methodology Applications Series. Please join us on **Friday, Dec. 8**, when Carrie Clark, Ph.D., associate professor of educational psychology, and Amanda Prokasky, Ph.D., MAP Academy senior research specialist, lead a presentation titled, "Capturing Life in Motion: Leveraging Wearable Technology for Human Subjects Research."



CLICK HERE TO LEARN MORE!

READ MORE →

Friday, December 8th
Nebraska Union, Regency Suite
12:00-1:30pm CDT

This presentation is free and open to the public.

Dr. Wayne Babchuk will be teaching EDPS 991: Grounded Theory this upcoming spring semester. The class will be offered on **Mondays from 5:00-7:50.**

If you have any questions about the class, please email Wayne at wbabchuk1@unl.edu

SPRING 2024



EDPS 991: GROUNDED THEORY

PRINCIPLES AND PRACTICES
 Register Under EDPS 991-001

Dr. Wayne A. Babchuk, Quantitative, Qualitative, and Psychometric Methods program (QQPM), Department of Educational Psychology. For more information please email wbabchuk1@unl.edu.

EDPS 991: Grounded Theory provides an in-depth and comprehensive overview of grounded theory often considered the most utilized qualitative design across disciplines and subject areas. Part 1 provides a foundational platform key to our understanding of grounded theory methodology, history, philosophical orientations, types, purposes, and practices. Part 2 focuses on hands-on practical application of grounded theory's "family of approaches." We will collaboratively design and fine-tune students' course projects building off individuals' research interests as we learn more about this methodology and its application.

MONDAY 5:00-7:50 TEAC 112 SPRING SEMESTER 2024



CONGRATULATIONS

Drs. Katie Edwards (CoPsych) and Wayne Babchuk (QQPM), who are leading the qualitative analyses on an NIH grant, "The impact of minority stress on alcohol-related sexual assault among sexual minority college students: An intersectional, mixed-methodological study." They have received additional funding for their project. The PI is Dr. Ryan Shorey at the University of Wisconsin, Milwaukee.

The objective of the proposed project is to examine alcohol-related sexual assault in sexual minority (i.e., lesbian, gay, bisexual, or another non-heterosexual sexual orientation [LGB+]) college students to determine (1) whether alcohol use temporally precedes and increases the risk for sexual assault perpetration and victimization, (2) whether sexual assault victimization temporally precedes and increases the risk for alcohol use, (3) whether daily and distal sexual minority stress and protective factors moderate the alcohol-sexual assault links, and (4) whether findings vary for LGB+ students with other intersecting social identities.

Brought To You By:
Assessment Psychology
Section of Division 12
(The Society of Clinical Psychology)
co-sponsored by
the Buros Center for Testing.

Assessment Throwdown 2023

Join us as three
assessment students
from across the
US battle it out
for the TOP SPOT.

Who will
integrate and
conceptualize
assessment data
in the most
meaningful and
context driven way?



BUROS
CENTER FOR TESTING

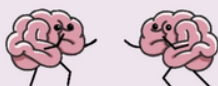
Friday,
December 1st

12:00pm-1:30pm
Eastern Time

Where: <https://wright.zoom.us/j/86097171652>



Round II: The Live Event



By: Danielle Thorpe

Judges

Jordan Wright
Jill Clemence
Andres Chou

ZOOM IN FOR THE APA DIV 12 ASSESSMENT THROWDOWN CO- SPONSORED BY THE BUROS CENTER!

On Friday, December 1, from 11:00 a.m. - 12:30 p.m., the Assessment Psychology Section of APA Division 12 (Clinical Psychology) and the Buros Center for Testing are co-sponsoring the second annual Assessment Throwdown. All are welcome to Zoom in and watch three graduate students analyze assessment data and offer a case conceptualization of a fictional client. An expert panel of judges will evaluate each participant's skills in interpreting assessment results and formulating interventions to assist the client.

This is a FREE event via Zoom. Please use the following Zoom link to participate in the event:
<https://wright.zoom.us/j/86097171652>

YOU ARE INVITED TO OUR EDPS
Holiday Potluck

We invite you, your kids, and family to enjoy and celebrate the holidays with us! Bring a favorite or cultural dish to share.

SATURDAY, DECEMBER 2ND
12 PM-2PM : CEPH 227

IF YOU HAVE ANY QUESTIONS ,EMAIL PATRICIA
PCARDELLINIDEALMEI2@UNL.EDU



Dear EDPS Students, Faculty, & Staff:

As we approach the end of 2023, let's gather for a festive potluck to celebrate our wonderful community and the spirit of the holidays. We invite you to bring a favorite cultural dish to share. If you need any support to buy the ingredients or have any difficulty bringing something, please let us know. We will have plenty of food so please don't feel obligated to bring a dish!

We kindly request that you confirm your presence by November 29th. You can send an email to pcardellinidealmei2@unl.edu

We look forward to celebrating with you and your family. We will have appropriate space for kids and activities for them to do!



DEMAC WOULD LIKE TO INVITE EVERYONE TO A SOCIAL EVENT AT MANA GAMES ON SUNDAY, DECEMBER 10TH FROM 12:00 PM TO 4:00 PM! THIS IS A CHARMING CAFÉ LOCATED A FEW MINUTES FROM UNL'S CAMPUS WHERE YOU CAN GRAB COFFEE/SNACKS AND PLAY A TON OF GAMES WITH FRIENDS. FAMILY MEMBERS ARE WELCOME, TOO, OF COURSE!

PLEASE NOTE THAT THERE IS AN ENTRY FEE OF \$5.00 PER PERSON.

TAP THE CARD TO RSVP FOR THE EVENT!



DEMAC Game Night
Mana Games Café
Sunday, December 10th at 12-4
RSVP: tinyurl.com/ManaGames-DEMAC



All EDPS graduate students are invited to attend "Translating Research to Practice", a webinar hosted by the National Association for Research in Science Teaching (NARST)GSC. Join Dr. Brooke Whitworth, Dr. Jennifer Adams, and Dr. Remy Dou to learn how to bridge the research to practice gap across many disciplines.

SIGN UP HERE!
<https://forms.gle/bcB2gQACJpdwBJr49>

Please direct all inquiries to Justin Andersson at jandersson@unomaha.edu

**Monday, December 4th from
1-2:15pm CST**

CoPsych Students!

The Counseling Psychology program will have their end of semester celebration on **Saturday, December 2nd at 5pm**. The event will take place on campus in **CPEH 227**.

Neeta will be catering food for the event. There will be gluten-free and vegetarian options available.

If you plan to attend, please fill out this form so Neeta can adequately plan for the amount of food needed for the event:
<https://forms.office.com/r/aYuUirWAVR>

Feel free to bring non-alcoholic beverages to share! We will have bottles of water available. Please email Neeta if you have any questions!

Want to make a room reservation?

Zee has created a link to organize room reservations to save everyone from emails! The QR code is posted throughout TEAC 114. You can also access the room reservation portal by visiting the website below.

Please give Zee 24-48 hours notice for all room requests

Click the plant or visit

<https://tinyurl.com/TEACRoomRes>
to request a room reservation.



If you have something you would like posted in Weekly Wednesday, please email Jules with your request by 2pm Tuesday!



JULES' OFFICE HOURS & DEMAC LIBRARY HOURS

REMINDER! All books are due by December 15th

Thursday 11/30: 12-1pm

Friday 12/1: 2-3pm

Monday 12/4: 2-3pm

Tuesday 12/5: 12-1PM

Wednesday 12/6: 3-4PM



Upcoming Office Hours



Thursday 11/30: 2-3pm

Friday 12/1: 11am-12pm

Monday 12/3 to Thursday 12/7:

By Appointment Only

Please email Sue to set up an appointment.

Susan Swearer, Ph.D., LP
Chair

Department of Educational Psychology
University of Nebraska-Lincoln

