

UNL DEPARTMENT OF EDUCATIONAL PSYCHOLOGY

New Student

Orientation

August 23, 2024

EVERY PERSON AND EVERY INTERACTION MATTERS



Orientation Agenda/Schedule

- 1. Introductions (9:00-9:30)**
- 2. Department Overview (9:30-9:45)**
- 3. Steps to Degree Completion, Milestones, & Resources (9:45-10:05)**
- 4. Professionalism (10:05-10:15)**
- 5. Academic Integrity (10:15-11:00)**
 - 10 Minute Break -**
- 6. Buros (11:10-11:20)**
- 7. NEAR Center (11:20-11:35)**
- 8. Counseling & School Psychology Clinic (CSPC) (11:35-11:50)**
- 9. DEMAC (11:50-12:05)**
- 10. Lunch in CPEH 227**



INTRODUCTIONS



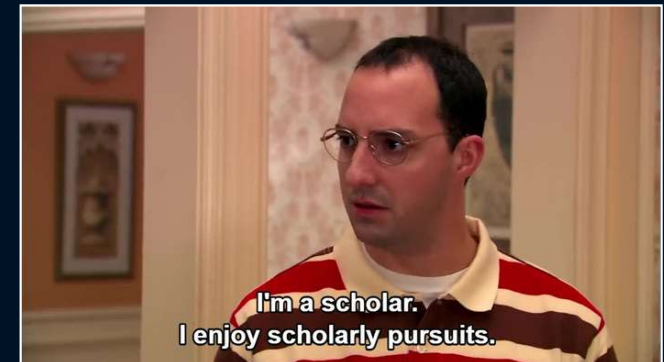
WHO ARE YOU?

Name & Pronouns

Program & Degree Track (e.g., Masters, Ed.S., or Ph.D.)

Where are you from?

One fun fact about you!



take a guess...

What percentage of the
US population has...

↪ A Master's Degree

↪ A Doctoral Degree



**Master's
Degree**



~ 11%

Source: US Census Bureau (2022)



**Doctoral
Degree**



~ 2%

Source: US Census Bureau (2022)





Department Overview

Department of Educational Psychology (EDPS)

Eight Centers & Academic Programs:

1. Counseling Psychology (**CoPsych**; APA Accredited Program)
2. Developmental & Learning Sciences (**DLS**)
3. Quantitative, Qualitative, and Psychometric Methods (**QQPM**)
4. School Psychology (**School Psych**; APA Accredited Program)
5. Institutional Research (IR)
6. BUROS Center for Testing
7. Nebraska Evaluation and Research Center (NEAR Center)
8. Nebraska Internship in Professional Psychology (NICPP)



Some very important people... EDPS Support Staff



Zee Cronin

mcronin6@unl.edu

she/her

Office Associate



Jules Meyers

jmeyers19@unl.edu

they/she

Graduate Student Coordinator &
Administrative Associate

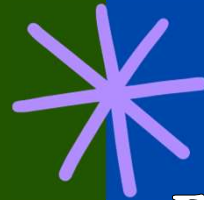


mcronin6@unl.edu

Zee



- **Room Reservations**
- **Door Access & Key Checkout**
- **Class Edits & Scheduling**
- **Permission Codes**
- **Building Maintenance**
- **General Office Inquiries**



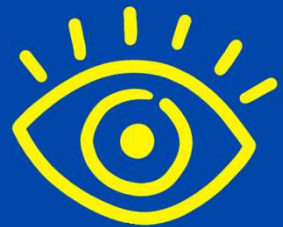
Jules



- **EDPS Website Updates**
- **GTA, GRA, & Lect Contracts**
- **Fellowship Contracts**
- **Weekly Wednesday**
- **Email Listservs**
- **Purchasing Needs**
- **Facilities Requests**



jmeyers19@unl.edu



Important Resources



Office of Graduate Studies (OGS)

The Office of Graduate Studies is the administrative home for graduate education at UNL. They work closely with individual graduate students and each program's faculty and staff to provide support at all stages of graduate education. Student success depends on a strong partnership between the Office of Graduate Studies and the academic programs that deliver the curriculum, training and, in many cases, financial support.

<https://graduate.unl.edu/>

International Student & Scholar Office (ISSO)

ISSO provides services to J- and F- international students & scholars. The services include providing holistic support through immigration advising and organizing cultural, social, and academic programs & events to support students and scholars' engagement at UNL.

<https://global.unl.edu/isso>

Services for Students with Disabilities (SSD)

SSD meets and facilitates access on an individualized, case-by-case basis. This interactive process requires collaboration and engagement among students, their instructors, supervisors and staff.

<https://ssd.unl.edu/>



Other Important Resources

Center for Advocacy, Response, & Education (CARE)

Providing advocacy and support for students, faculty and staff who have experienced sexual violence, domestic/dating violence, sexual harassment and stalking, our advocates are here to help you navigate campus and community resources.

<https://care.unl.edu/>

Counseling & Psychological Services (CAPS)

Counseling and Psychological Services is a multidisciplinary team of psychologists and counselors that works collaboratively with Nebraska students to help them explore their feelings and thoughts and learn helpful ways to improve their mental, psychological, and emotional well-being when issues arise.

<https://caps.unl.edu/>

Office of Academic Success and Intercultural Services (OASIS)

The Office of Academic Success and Intercultural Services works collaboratively with others to transform the campus into a community in which members build bridges of understanding across boundaries of race, gender, culture, socioeconomic class, sexual orientation, ability, religion, nationality, and language

<https://www.unl.edu/oasis/>

A very important resource...

Weekly Wednesday!



All announcements, news, and other departmental opportunities are posted in our newsletter, which is sent via email listserv every Wednesday afternoon. It is also posted to our website at the link below!

An archive of previous Weekly Wednesday newsletters is available on our website: <https://cehs.unl.edu/edpsych/weekly-wednesday/>

If you have something you would like posted in Weekly Wednesday, please email your information & a short blurb to Jules by 12pm the Tuesday prior.

Please refrain from sending information or documents containing:

- Personal information, such as phone numbers or addresses
- Standalone QR Codes (cannot be shared digitally)
- Images with weblinks printed within the photo
- PDFs (PNG/JPEG preferred)

Questions? Email Jules!



***Steps to Degree
Completion, Degree
Milestones, &
Student Resources***



first things first...

Things you should have already done...or do ASAP!

- **Check out OGS' "New Graduate Student Checklist"**
 - <https://graduate.unl.edu/relocate/arrival-checklist>
- **Claim your ID and set your password in TrueYou**
 - <https://trueyou.nebraska.edu/account/claim>
- **Activate your UNL email address**
 - <https://nusupport.nebraska.edu/TDClient/33/Portal/Requests/ServiceDet?ID=116#new-students>
- **Get an NCard (ID Card)**
 - <https://scsapps.unl.edu/NCardOnlineApplication/>
- **Register for classes on MyRed***
 - myred.nebraska.edu

***Please meet with your
advisor to plan your classes
and program of studies!**

Additionally...

- **Read your program handbook**
- **Read the Graduate Student Handbook**
 - <https://cehs.unl.edu/edpsych/edps-graduate-student-handbook/>
- **Request a no-cost Sender's License from DocuSign**
 - You will need this to route your forms for signatures!
 - Other electronic signature platforms, like Adobe, are not permitted.
 - <https://nusupport.nebraska.edu/TDClient/33/Portal/Requests/ServiceDet?ID=27>

What are Degree Milestones?

Graduate Studies: graduate.unl.edu

Steps to Degree Completion can be found here:

<https://graduate.unl.edu/academics/program-steps>

Contacts:

- Your Advisor
- Scott Napolitano - EDPS Graduate Chair (snapolitano2@unl.edu)
- Jules Meyers - EDPS Graduate Student Coordinator (jmeyers19@unl.edu)
- Terri Eastin - Master's Program Coordinator (teastin1@unl.edu)
 - Doctoral Students send all paperwork to graduatedocuments@unl.edu

It is YOUR responsibility to ensure all paperwork necessary for graduation is signed & submitted to the Office of Graduate Studies in a timely manner.



Tasks to complete in your first year

(MA Degree Students)

Master's Steps to Degree Completion:

<https://graduate.unl.edu/academics/program-steps/masters-degree-steps-to-completion>

Memorandum of Courses

(MA Only)

**MUST be submitted before 1st half of
required coursework is completed**

Signed by Graduate Chair & your advisor.

Submit signed & completed form to: Terri Eastin (teastin1@unl.edu)



Tasks to complete in your first year

(Ed.S. Degree Students)

Educational Specialist Steps to Degree Completion:

<https://graduate.unl.edu/educational-specialist-eds-degree-steps-to-completion-0>

Supervisory Committee

- Must be submitted prior to completion of 42 credits
- Signed by your advisor + 2 other graduate faculty

Program of Studies

- Must be submitted prior to completion of 42 credits
- Approved by your supervisory committee

Submit documents to: graduatedocuments@unl.edu



Tasks to complete in your first year ***(Ph.D. Degree Students)***

Doctoral Steps to Degree Completion:

<https://graduate.unl.edu/academics/program-steps/doctoral-degree-steps-to-completion>

Supervisory Committee

- Your advisor + 3 other graduate faculty
 - At least one faculty representative from OUTSIDE of the department
 - If receiving a minor, you must have one faculty member from that area/department

Program of Studies (PhD)

- Must be done before half of your courses are taken
- Approved by your supervisory committee

Submit documents to: graduatedocuments@unl.edu



Scott Napolitano

If you need a signature
from the GRADUATE
CHAIR of the
department, please
route your form to
Scott for signatures!



snapolitano2@unl.edu

N


During your second semester of your first year...

Apply for Assistantships/Fellowships

- **Teaching Assistantships (GTA)**
 - International students may be required to complete the Institute for International Teaching Assistants (ITA) program prior to their teaching duties.
 - <https://graduate.unl.edu/professional-development/teaching-development/ita>
- **Research Assistantships (GRA)**

Available assistantships are posted to our EDPS Website:
<https://cehs.unl.edu/edpsych/graduate-assistantships/>

Note: many assistantships come with summer tuition remission of up to 12 hours. If you are unsure if your assistantship covers summer tuition, please ask Jules.

 Admission to the Department of Educational Psychology does not guarantee funding via assistantship. It is the responsibility of each student to pursue funding for their degree.

Information regarding fellowships can be found on this website:

<https://graduate.unl.edu/funding/fellowships>



A little course planning advice...

Think & Plan Ahead!!!

- Many courses are offered every other year, or only on occasion
- Check course schedules online
- Make a 3-4 year plan with your advisor!

Have a Plan B

- What if a course gets cancelled?
- What if you need to take a leave of absence?
- What if your advisor leaves UNL?



EDPS Comprehensive Exams

Master's Comprehensive Exam

- Consists of 3 subtests
 - Consult with your advisor to know which exams you must take for degree completion
- Offered three (3) times a year (no alt. dates)
 - First Friday in October, March, and June
- <https://cehs.unl.edu/edpsych/masters-comprehensive-exam/>

Doctoral Comprehensive Exam

- Each program has different procedures. **TALK TO YOUR ADVISOR!**
- Some exams are written, whereas others are oral
- Exam(s) are taken after a majority of coursework has been completed
- Once the comprehensive exam(s) have been passed, you must submit your application for candidacy. Once approved by OGS, you are officially a “doctoral candidate.”



Thesis / Dissertation

Master's Thesis (if applicable)

- Students work with their advisor to choose an appropriate data-based project
- Thesis must be read by at least one other faculty member

Ed.S. Research Project & Portfolio (NASP requirement)

- Work with your program advisor and read the School Psychology handbook!

Doctoral Dissertation

- Developed in a research group or independently under the supervision of your advisor, who will also serve as the chair on your committee
- Both your proposal & defense will be in front of your Supervisory Committee and will include two (2) readers



When senior grad students tell junior ones what it's like to work on a thesis/dissertation



Other Program Requirements

Research

- Usually in collaboration with your advisor, but you are welcome to check with additional faculty members!
- Essential to your training as a research scientist
 - Theory
 - Methodological Design/Measurement Development
 - IRB Applications & Ethics
 - Recruitment
 - Data Collection
 - Grant Management
 - Analysis
 - Writing & Defending your research

Labs & Research Groups

- Every lab/group is different! A good estimate of time spent on research is at least 8-10hr/week, or more if you have an assistantship.

COMPLETE THE CITI CERTIFICATION COURSE!!!



<https://research.unl.edu/researchcompliance/required-human-subjects-training/>



Other Program Requirements

Research Requirements

- Discuss with your advisor!
- MUST register for one EDPS 995 (Doctoral Seminar; 3 Credits) before you will be approved to graduate with a degree in Educational Psychology
 - Will be graded as “In Progress” until completion of program

“Completion” means a conference presentation and/or journal publication has been submitted. Exact requirements vary by program and degree track. Students should consult their advisor & program handbooks for additional information pertaining to research requirements.



Professional Development

Get Involved!

- Your area-specific student organization
- The Diversity and Ethnic Minority Affairs Committee (DEMAC)
 - <https://cehs.unl.edu/edpsych/demac/>
- The Graduate Student Assembly (GSA)
 - <https://www.unl.edu/gsa/>
 - Get on the email list!

Attend Conferences: NETWORKING MATTERS!

- EDPS Travel Scholarships
 - May be reimbursed up to \$250/year
 - <https://cehs.unl.edu/edpsych/educational-psychology-travel-application/>



Annual Student Reviews

Every area's program faculty conduct **Annual Student Reviews** at the end of the Spring semester each academic year to ensure that all students are progressing successfully through their program.

Criteria for **SATISFACTORY PROGRESS** in the department includes:

- A grade of **at least B or better** in all required coursework
- Promptly completing required Graduate Studies **paperwork**
- Successfully **passing** the comprehensive exam
- Successfully **defending** a thesis or dissertation.



It's YOUR RESPONSIBILITY!

It is expected that all Graduate Students keep up to date on all rules and regulations of both the Department AND the University.

It is YOUR responsibility to read & know this information!

The Graduate & Professional Catalogue

- Policies: <https://catalog.unl.edu/graduate-professional/policies/>

Department of Educational Psychology

- Website, Handbook, & Orientation Slides (Under "Current Student Support")
 - <https://cehs.unl.edu/edpsych/>

UNL's Student Code of Conduct

- <https://studentconduct.unl.edu/university-nebraska-student-code-conduct>

Graduate & Professional Student Bill of Rights

- <https://graduate.unl.edu/academics/rights>



Other Important Resources

Technology Services

- For all software/technology needs!
 - <https://its.unl.edu/students/>



Love Library

- Offers Interlibrary Loans!
 - <https://libraries.unl.edu/>



Weekly Wednesday Newsletter

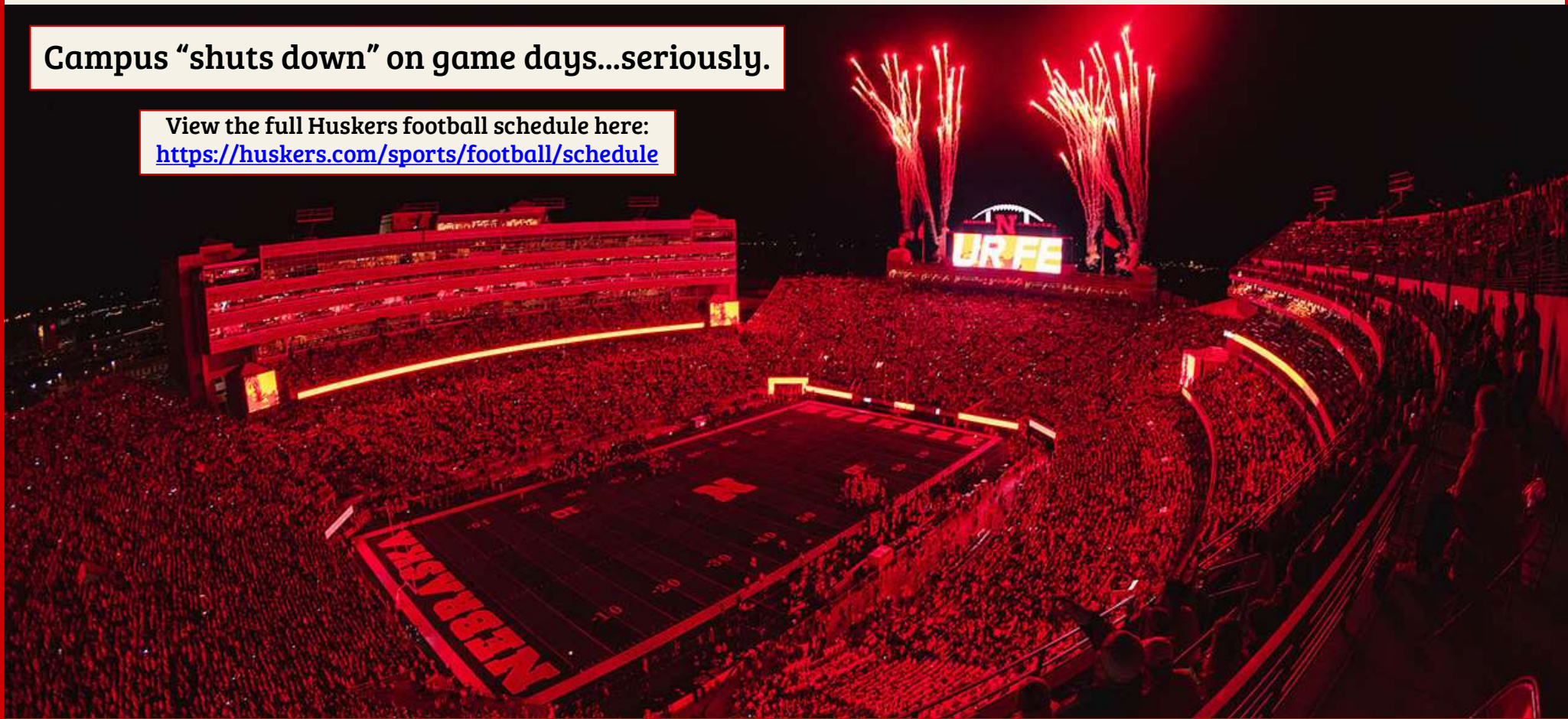
- Written by Jules and sent out every Wednesday
 - Important information regarding funding opportunities, seminars, events, policy changes, etc.
 - Sent via email & posted to website: <https://cehs.unl.edu/edpsych/weekly-wednesday/>
 - Archive of previous editions of Weekly Wednesday available on website as well!
- If you have something you would like posted to the Weekly Wednesday, please email Jules your information & blurb by 12pm the Tuesday prior!

a miscellaneous note...

Campus “shuts down” on game days...seriously.

View the full Huskers football schedule here:

<https://huskers.com/sports/football/schedule>



Professionalism

Professional Email Etiquette

Create a professional signature line!

- Generate a UNL Signature Line
 - Name, Title, Program, Department, Pronouns...think important information!
- <https://ucomm.unl.edu/signature-generator>



Alexis Chavez (he/him/él)

Graduate Research Assistant

Nebraska Academy for Methodology, Analytics & Psychometrics

Nebraska Center for Research on Children, Youth, Families, & Schools

Quantitative, Qualitative, & Psychometric Methods

Educational Psychology

University of Nebraska–Lincoln

Remember...people are watching!

- You never know if your email will be shared or forwarded!
- Personal information, opinions, or communications that students make in public or that are posted on websites, chatrooms, electrical bulletin boards, or any social media should NEVER be offensive to the community, immoral within accepted community standards, or insulting to ANY person or groups of persons.



Modes of Contacting Staff & Faculty

Start with an Email

- Faculty in the department do not have office phones. The best way to contact a faculty member is to email them directly and set up a time to meet.

Professionalism in Communication

- <https://newsroom.unl.edu/announce/beyondjd/4432/25857>
- Note that some individuals throughout the University have differing working hours. Please do not “spam” any students, staff, or faculty members with multiple emails, calls, or texts.
- The Department does not give out personal phone numbers for faculty or staff
- Your advisor may have a preferred method of communication. It is up to the student and their advisor to specify which modes of communication are most accessible to each of you.

Professional Writing

APA Publication Manual (7th edition)

- Also, Perdue OWL:

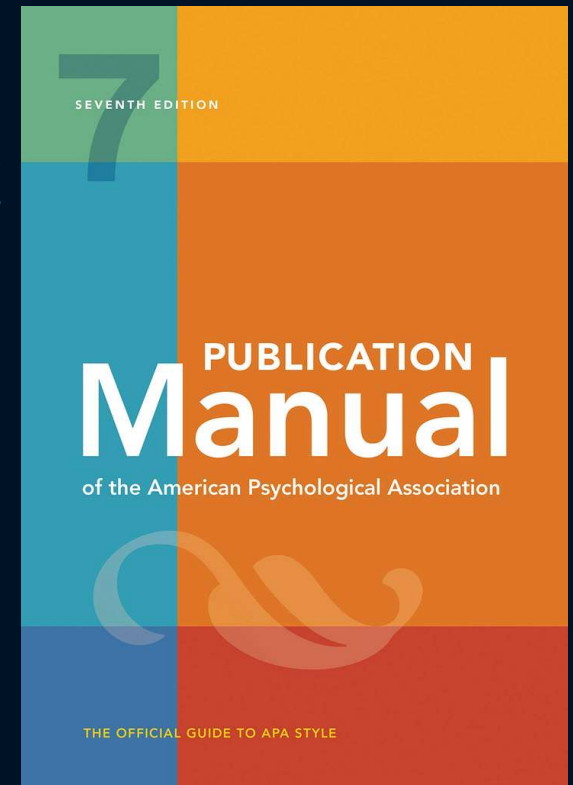
https://owl.purdue.edu/owl/research_and_citation/apa_style/apa_formatting_and_style_guide/general_format.html

UNL Writing Center

- <https://www.unl.edu/writing/>

Recommended Resources

- Hancock (2003). *Ideas Into Words; Mastering the Craft of Science Writing*
- Schimel (2012). *Writing Science*
- Silvia (2007). *How to Write a Lot: A Practical Guide to Productive Academic Writing*



Your Curriculum Vitae (CV)

SUSAN MARIE SWEARER, Ph.D. - CURRICULUM VITA

Office:

Department of Educational Psychology
The University of Nebraska – Lincoln (UNL)
Lincoln, NE 68588-0345
402-472-5889 (fax)
402-570-3907 (cell)

sswearer@unl.edu; sswearer@gmail.com (email)

EDUCATION

Ph.D. (1997) The University of Texas at Austin, Austin, TX. School Psychology. APA accredited School Psychology Program.

M.A. (1993) The University of Texas at Austin. School Psychology. APA and NASP accredited School Psychology Program.

M.S. (1989) The Pennsylvania State University, University Park, PA. Special Education.

B.A. (1987) Swarthmore College, Swarthmore, PA. Psychology.

PROFESSIONAL EXPERIENCE

Administration

2021-present: Chair, Department of Educational Psychology

- Manage 33 faculty, 133 graduate students, and three office staff
- Manage a budget of over \$3 million dollars
- Responsible for academic direction of seven programs (Buros Center for Testing; Counseling Psychology; Developmental Learning Sciences; Institutional Research; Nebraska Internship Consortium in Professional Psychology; Quantitative, Qualitative, and Psychometric Methods; and School Psychology).
- Chair, Chancellor's Commission on the Prevention of Sexual Misconduct at UNL.

What to Include:

- Educational Background
- Research Activities
- Publications (articles, books, etc.)
- Conference Presentations (posters, talks, etc.)
- Grant money or funding
- Awards & honors
- Teaching & TA-ships
- Professional Membership affiliations

A CV is NOT a resume!

speaking of professional affiliations...

Think about which professional organizations you'd like to join!

Some suggestions:

- American Educational Research Association (AERA)
- American Psychological Association (APA)
- Society for Research in Child Development (SRCD)
- Other regional & state organizations

Why join?

- Professional Networking
- Funding Opportunities & Student Discounts
- Conferences & Event Invitations
- Important to your development as a graduate student!



Other things to consider:

Read “Nebraska Today” for UNL events!

- <https://news.unl.edu/newsrooms/today/>

In your first few years...

- Posters (approximately one per year)
 - Turn these into manuscripts!
- Attend Graduate Student Events

Also consider:

- Paper Submissions (give a talk)
- Chair a symposium
- Attend early career events
- Actively network!
- Join a student group



Other things to consider:

CREATE A 5-YEAR PLAN!

Find an example here:

<https://theprofessorisin.com/2014/05/09/in-response-to-popular-demand-more-on-the-5-year-plan/>

Actively seek out multiple mentors!

You have an advisor, but...

- You'll need three (or four!) letters of recommendation
- Advisors only have their own experiences to draw on
- More mentors = more opportunities
- If you end up having a conflict with your advisor, you have a built-in support system to help you through the conflict.

Other things to consider:

Apply for funding/awards!

Even a \$100 fellowship looks good on a CV!

Grants, Awards, & Funding

- <https://www.apa.org/about/awards/index>

Research Grants

- <https://buffettinstitute.nebraska.edu/our-people/graduate-scholars>
- <https://researchtraining.nih.gov/career/graduate>

Academic Integrity



Academic Integrity Resources

UNL Grad Studies: On Demand Professional Development for Graduate Students

- <https://canvas.unl.edu/courses/73802>

UNL Grad Studies: List of Professional Development Workshops

- <https://graduate.unl.edu/graduate-support/workshops>

University of Michigan Graduate Student Mentoring Guide

- <https://rackham.umich.edu/downloads/student-mentoring-handbook.pdf>

William T. Grant Foundation: Maximizing Mentoring

- https://wtgrantfoundation.org/wp-content/uploads/2023/11/Maximizing-Mentoring_A-Guide-for-Building-Strong-Relationships.pdf

McCrary Calarco, J. (2022). A field guide to grad school: Uncovering the hidden curriculum.

Silvia, P. J. (2014). Write it up: Practical strategies for writing and publishing articles.

Booth et al. (2024). The craft of research (5th ed.).



Academic Integrity 1

What is it?

- “ICAI [International Center for Academic Integrity] *defines academic integrity as a commitment to six fundamental values: honesty, trust, fairness, respect, responsibility, and courage.*” ([ICAI, 2021, p. 4](#))

Why is it important?

- ICAI argues that a loss of academic integrity devalues the work of everyone in the academy.
- Basically, if we cannot trust that all students and faculty are maintaining academic integrity, then we cannot trust that two people with the same degree have the same overall level of knowledge/skills, which makes the degree useless.



Academic Integrity 2

Academic Integrity at UNL

- At UNL, Academic Integrity for students is covered in the University of Nebraska Student Code of Conduct Section II ([link](#)) and mainly covers five categories:
 1. Cheating
 2. Dishonesty, Falsification, and Fabrication
 3. Harmful Academic Actions Towards Others
 4. Improperly Helping Others
 5. Failing to Follow the Rules

“As required by the Faculty Senate Policy, all faculty members must report any violation of academic misconduct that they determine has occurred in their class to SCCS [Office of Student Conduct & Community Standards].” (emphasis added, [UNL Academic Integrity Webpage](#))



Fair Use vs. Plagiarism

Fair Use

- “*Fair use allows limited use of copyrighted material without permission for purposes such as criticism, parody, news, reporting, research and scholarship, and teaching. However, just because a use is educational does not mean that it automatically qualifies as fair use.*”
(emphasis added, [NYU Libraries Fair Use webpage](#))
- Since most of what we do is research, scholarship, and teaching, we are lucky that we are allowed to use other people’s work provided we limit the amount, and we acknowledge the source.

Plagiarism

- Plagiarism is “*an act or instance of using or closely imitating the language and thoughts of another author without authorization and the representation of that author's work as one's own, as by not crediting the original author*” ([Dictionary.com](#))
- Plagiarism is bad because it violates the foundations of academic integrity (e.g., honesty, respect) and therefore also violates the UNL Student Code of Conduct



Types of Plagiarism

Types of Plagiarism

- *“turning in someone else's work as your own*
- *copying words or ideas from someone else without giving credit*
- *failing to put a quotation in quotation marks*
- *giving incorrect information about the source of a quotation*
- *changing words but copying the sentence structure of a source without giving credit*
- *copying so many words or ideas from a source that it makes up the majority of your work, whether you give credit or not (see our section on "fair use" rules)" (Plagarism.org)*
- **presenting your own ideas or writing as new when they have appeared elsewhere previously (i.e., self-plagiarism)**

Plagiarism Example 1*

Text in Question:

You may say I'm a dreamer,
but I'm not the only one.

Plagiarism?

→ **YES!**

Why?

- No indication this is a direct quote
- No author given
- No source given

*Based on a slide by Dr. Carrie Clark (2023)



Plagiarism Example 2*

Text in Question:

**“You may say I’m a dreamer,
but I’m not the only one.”**

Plagiarism?



YES!

Why?

- No Author Given
- No Source Given

*Based on a slide by Dr. Carrie Clark (2023)



Plagiarism Example 3*

Text in Question:

You may say I'm a dreamer,
but I'm not the only one. (Lennon, 1971, Track 1)

Plagiarism?

↪ **YES!**

Why?

- Did not indicate it as a direct quote

Plagiarism Example 4*

Text in Question:

“You may say I’m a dreamer,
but I’m not the only one.” (Lennon, 1971, Track 1)

Plagiarism?

↙ **NO!**

Why?

- Direct quote that is correctly credited to its author and source

*Based on a slide by Dr. Carrie Clark (2023)



Plagiarism Example 5*

Text in Question:

"Imagine there's no heaven, It's easy if you try
No hell below us, Above us, only sky
Imagine all the people, Livin' for today
Ah
Imagine there's no countries, It isn't hard to do
Nothing to kill or die for, And no religion, too
Imagine all the people, Livin' life in peace
You
You may say I'm a dreamer, But I'm not the only one
I hope someday you'll join us, And the world will be as one
Imagine no possessions, I wonder if you can
No need for greed or hunger, A brotherhood of man
Imagine all the people, sharing all the world
You
You may say I'm a dreamer, but I'm not the only one
I hope someday you'll join us
And the world will live as one" (Lennon, 1971, Track 1)

Plagiarism?
↪ **No, but...**
Why?

**This exceeds the "limited use"
requirement of Fair Use and
therefore requires the permission
of the copyright holder.**

***Based on a slide by Dr. Carrie Clark (2023)**



Plagiarism Example 6*

Text in Question:

Some people call me a dreamer. However, many people are dreamers. (Lennon, 1971, Track 1)

Plagiarism?

↙ **YES!**

Why?

- Not a direct quote, but did not substantially change the original text or meaning.

*Based on a slide by Dr. Carrie Clark (2023)



Plagiarism Example 7*

Text in Question:

In his song Imagine, John Lennon (1971, Track 1) describes a peaceful human society where resources are equally shared. While Lennon acknowledges the notion of a utopian society may be idealistic, he points out that others share his vision of a world without war, for example Mahatma Gandhi (1967). Where Lennon and Gandhi differ is that Lennon's ideal society has no religions, whereas Gandhi believed religion must be the foundation of an ideal society.

Plagiarism?

→ **NO**

Why?

- Not a direct quote and correctly cited sources
- Summarizes the original idea while comparing and contrasting with other people's take on the same idea

*Based on a slide by Dr. Carrie Clark (2023)

N

The Other AI

What is it?

- Generative artificial intelligence (AI) assistants such as ChatGPT, Gemini, etc. are large language models that can generate “new” answers/images/sounds based on user prompts

What are the concerns with students using AI?

- Cheating
- Plagiarism
- Spreading Misinformation
- Not building critical thinking skills

Use of AI at UNL

UNL Center for Transformative Teaching (CTT)

- UNL does not currently have a blanket policy on the use of AI, leaving this up to individual instructors, provided the use of AI does not violate academic integrity.

The UNL CTT provides resources for classroom AI policy creation including:

- Unrestricted use
- Use allowed under specific circumstances
- Use prohibited entirely

Acceptable Uses of AI

UNL Center for Transformative Teaching (CTT)

“Acceptable uses:

- *Using AI to help brainstorm ideas and organize thoughts.*
- *Using AI image generators to create visuals for storyboards.*
- *Using AI to help with grammar and spelling checks.*
- *Using AI to explain confusing concepts in simple language.*
- *Using AI to translate text from one language to another.*
- *Using AI to help diagnose error messages.”*



Unacceptable Uses of AI

UNL Center for Transformative Teaching (CTT)

“Unacceptable uses:

- *Using AI to generate content for assignments.*
- *Using AI image generators to create visuals for journalism or fact-based reporting, photo journalism, or anything you’re creating that’s represented as real.*
- *Using AI to plagiarize content from other sources*
- *Using AI to answer exam or quiz questions*
- *Using AI to automate the completion of assignments.”*



Ethical Consideration for AI

UNL Center for Transformative Teaching (CTT)

“Other ethical considerations to keep in mind when using AI for college assignments:

- Be transparent with your instructor. If you are using AI to help with your assignments, let your instructor know. This will help to avoid any misunderstandings or accusations of plagiarism.*
- Avoid plagiarism. Using AI-generated content without proper citation could result in academic dishonesty charges*
- Use AI responsibly. Do not use AI to cheat or to automate the completion of assignments. Instead, use it to help you learn, understand, and improve your academic skills.”*
- Note: Many professional societies, journals, book publishers, and funding agencies are now requiring that you disclose any and all use of AI when submitting presentations, articles, grants, etc.**



Academic Integrity 3

YOU are ultimately responsible for maintaining academic integrity, so if in doubt...

ASK!

BUROS

CENTER FOR TESTING

TEST REVIEWS • ASSESSMENT LITERACY
PSYCHOMETRIC CONSULTING

WWW.BUROS.ORG

Buros Center for Testing: History, Mission, and Initiatives

EDPS New Student Orientation
August 23, 2024
Jennifer E. Schlueter

UNIVERSITY OF
Nebraska
Lincoln | COLLEGE OF EDUCATION
& HUMAN SCIENCES

The need for critical test reviews

The use of psychological tests increased in the 1920s.

There was no regulation to control the quality of these tests in the United States. This is still the case today!

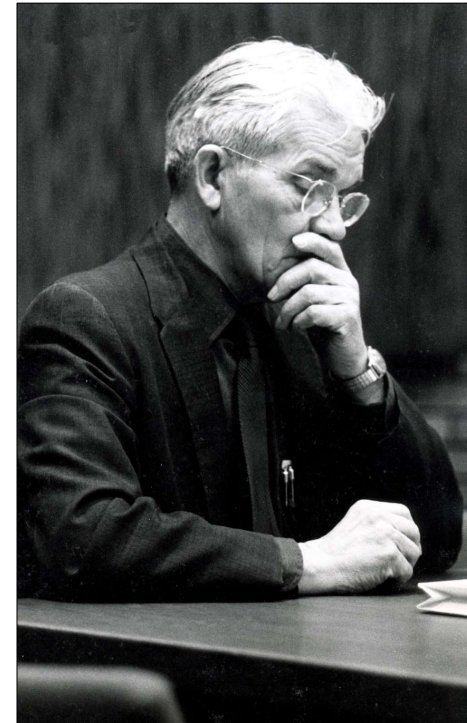
Test reviews that did exist were subjective.

There was no quantitative criteria for evaluation.

Oscar Krisen Buros recognized the need to hold test publishers accountable.

*“Oscar Buros believed that it was incumbent upon the profession to monitor itself and he hoped that reviews of tests would spur improvements in test manuals, descriptions of the technical quality of tests, and test-related research that would be beneficial to prospective test users.”**

To meet this need, in 1938 he published *The Nineteen Thirty Eight Mental Measurements Yearbook*.



Oscar Krisen Buros

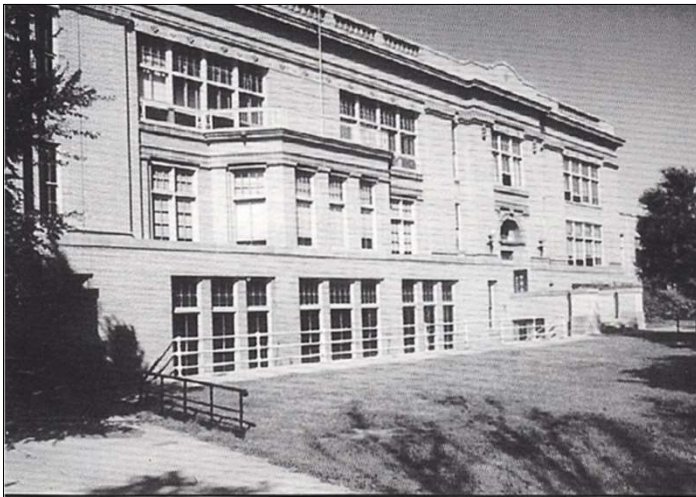
*Carlson, J. F., & Geisinger, K. F. (2012). Test reviewing at the Buros Center for Testing. *International Journal of Testing, 12*, 122-135.

From 1938 until his death in 1978, Oscar and his wife Luella published seven *Mental Measurements Yearbooks*.

After Oscar's death, Luella carried on his mission, first by completing the 8th *MMY* and then by finding a new home for the Center.



The house in New Jersey (above) where Oscar and Luella Bueros lived with their cats on the second floor, rented out the first, and produced the *MMYs* in the basement (left).



Bancroft Hall at UNL was the second home of the Bueros Institute of Mental Measurements, now known as the Bueros Center for Testing.



BUROS
CENTER FOR TESTING

Luella Buross (1901 – 1995)

Educated at The Ohio State University; Columbia University, Teachers College, and Rutgers University.

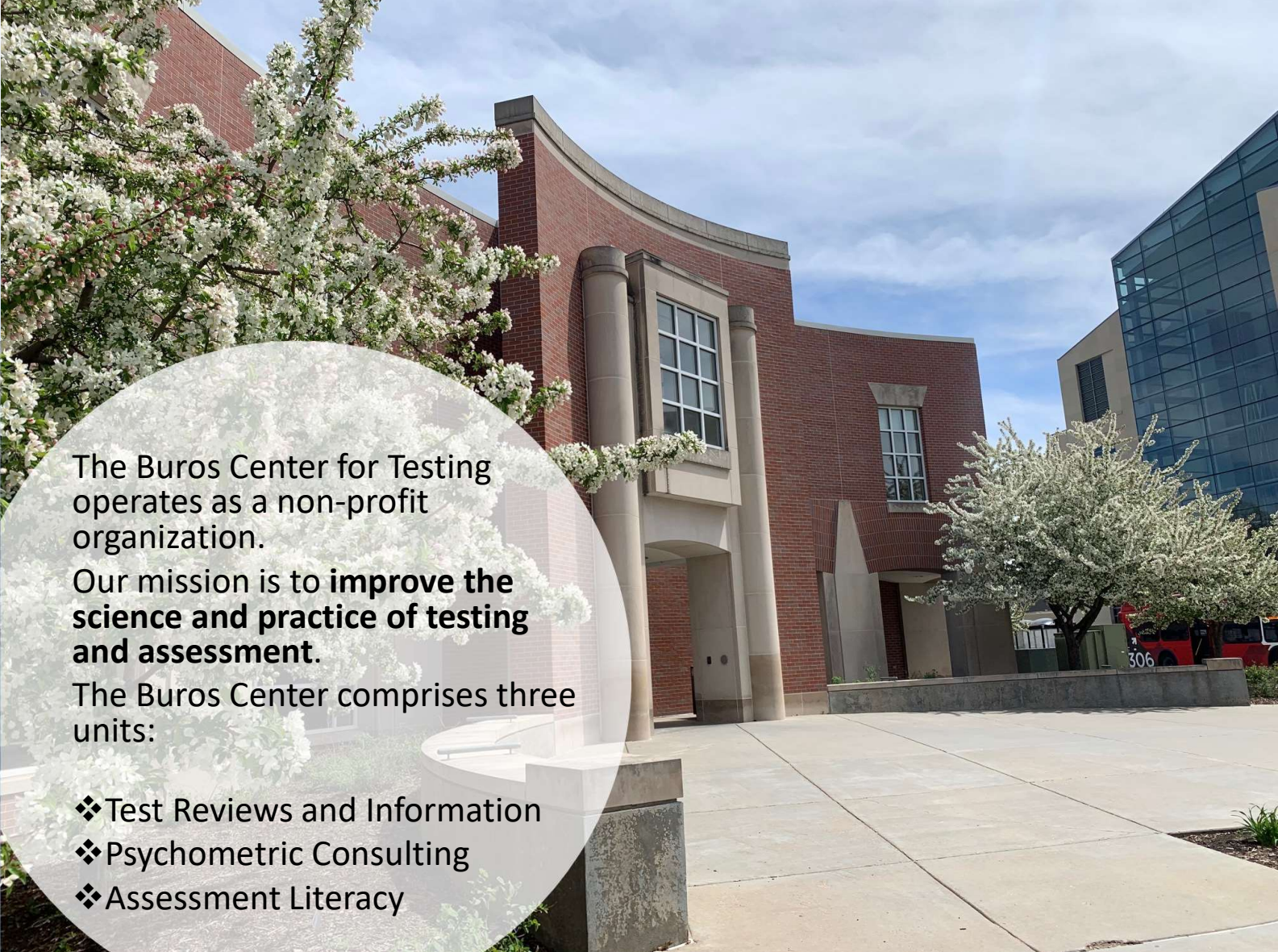
Painter, sculptor, photographer, and peace activist.

Only woman named to the “Famous Women in Testing”* roster who did not have an advanced degree.

Founding contributor to the journal *Peace and Conflict: A Journal of Peace Psychology*, currently published by the American Psychological Association (APA).



BUROSS
CENTER FOR TESTING



The Buros Center for Testing operates as a non-profit organization.

Our mission is to **improve the science and practice of testing and assessment.**

The Buros Center comprises three units:

- ❖ Test Reviews and Information
- ❖ Psychometric Consulting
- ❖ Assessment Literacy

Test Reviews and Information



Test Reviews and Information publishes reference volumes that provide descriptions and reviews of commercially available tests in English and Spanish.

This unit initially began with the publication of the first *Mental Measurements Yearbook* in 1938 and continues today as the publishing unit of the Buros Center.

The Mental Measurements Yearbook (MMY)

The first yearbook published at UNL was *The Ninth Mental Measurements Yearbook* in 1985.

The 21st volume was published in 2021. The 22nd volume is expected in 2025.

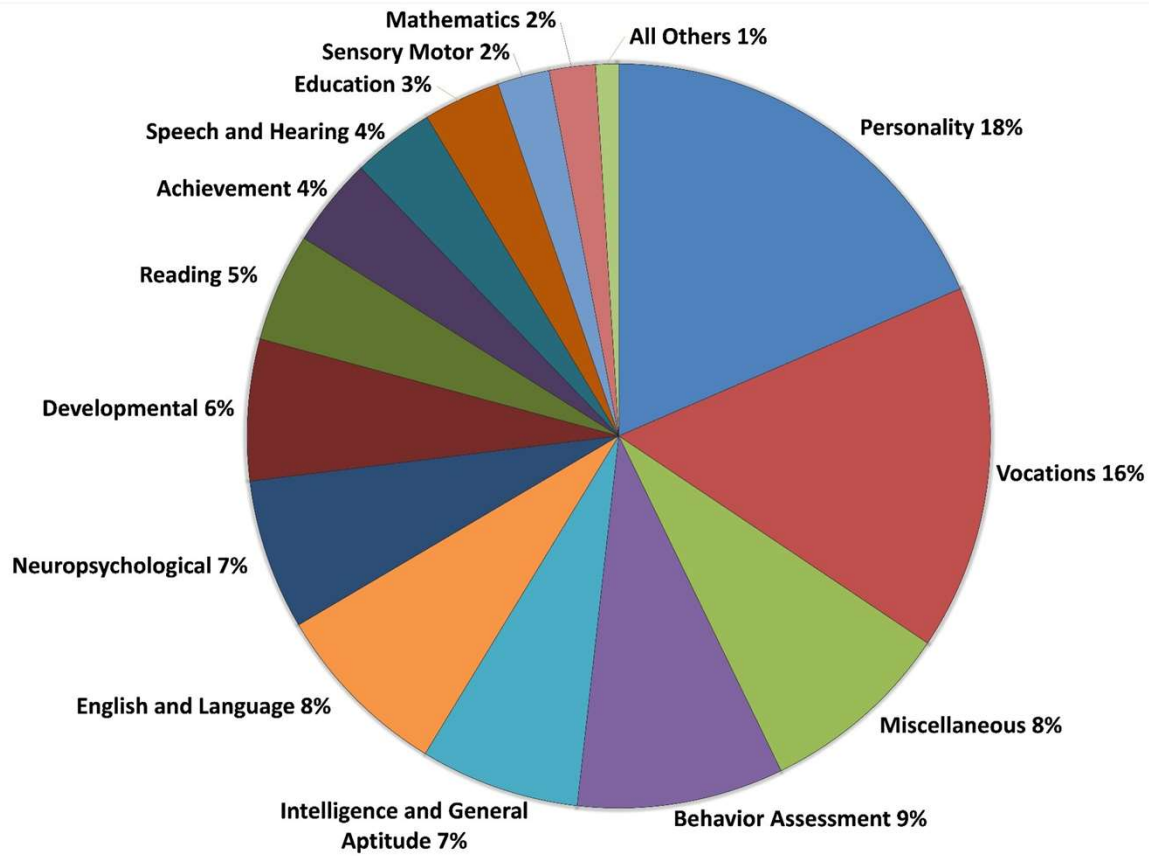
Reviewers are doctoral-level professionals who volunteer their expertise to this effort.

Buros Center editors match reviewers with tests based on professional experience.



Gary Anderson

Test Classifications and Percentages of Tests Reviewed in Each Category since 1998

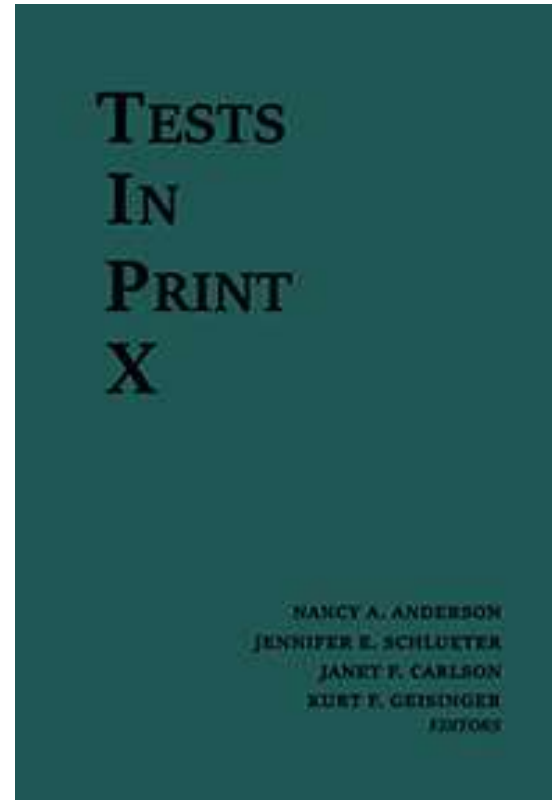


Tests in Print (TIP)

This directory-style reference was first published in 1961. The 10th edition was published in 2022.

TIP compiles descriptions of all known commercially available tests in English even if they are not eligible for review in *MMY*.

The cross references in *TIP* test entries direct interested parties to corresponding *MMY* reviews.



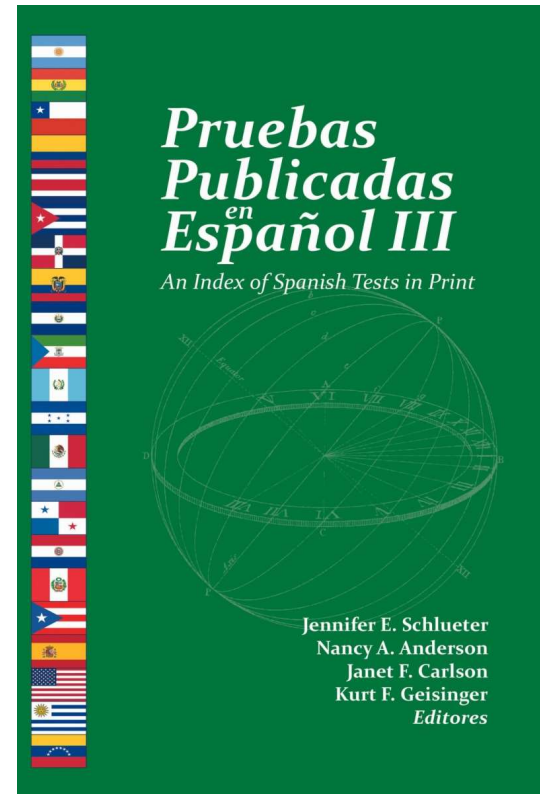
Pruebas Publicadas en Español: An Index of Spanish Tests in Print (PPE)

First published in 2013; provides information about tests available partly or wholly in Spanish.

Each description appears in a side-by-side, dual-language format.

Descriptions encompass a range of Spanish tests, from those developed entirely in Spanish to those with only one or two forms in Spanish.

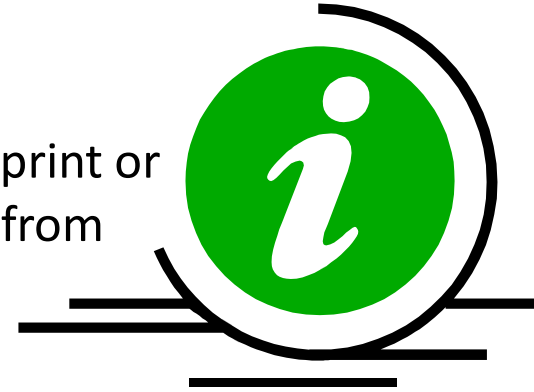
The third and most recent edition was published in 2023.



BUROS
CENTER FOR TESTING

Electronic Access

Buros reference volumes are available in print or in digital format via electronic databases from EBSCO and Ovid.



You can access this information FREE from UNL's library!

PPE is also available as a searchable PDF.

Psychometric Consulting

Evaluation and Oversight

- Proprietary testing programs

Consultation and Training

- Advise on best practices for test development, validation, and test maintenance

Psychometric Research

- Alignment studies, standard setting, validity and reliability evaluation

Audit and Accreditation

- Stage One
- Stage Two



Assessment Literacy

The Assessment Literacy unit was launched in 2011.

Its goal is to educate test authors, publishers, and test users about sound measurement practice.

This goal is achieved by providing programming and materials that help promote a deeper understanding of assessment.

These include:

- Professional development forums
- Guides and digital resources

This fall's webinar:
ASSESSMENT OF
CHILDREN

Email

jjonson@buros.org

**to Register
FOR FREE**

Oscar K. Buros Library

The Oscar K. Buros Library is a specialized reference library that has been housed at UNL for more than 40 years.

It is generally regarded as the world's largest collection of tests and testing materials.

The primary collection—composed of approximately 8,500 tests—consists of educational and psychological tests, acquired across several decades.

In addition to the test collection, the Library contains over 1,900 books related to measurement, testing, evaluation, statistics, and assessment, including many classic texts by renowned authors.

A special collection of nearly 600 books originally owned by Oscar Buros shelved separately.





Tests in the collection are those that have been indexed and described in *Tests in Print*. Many have also been reviewed in previous editions of the *Mental Measurements Yearbook*. All tests are treated as secure.



Luella Buros

The library, its many holdings, and almost all its artwork owes directly to the generosity of its founders, Oscar and Luella Buros.

Buros at Home and Abroad

- National and international conferences
 - Sponsorships
 - Educational outreach at booths
 - Scholarly presentations and posters
- Graduate student assistantships (around 5)
- Contributions to scholarly journals
- Test reviews and information for a world-wide audience
- Webinars and other educational content on timely topics presented by testing professionals
- Accreditation



Buros Resources

Electronic access to test information and reviews

- EBSCO databases at UNL library
 - Search “Mental Measurements”
 -

Assessment Literacy resources buros.org/assessment

- Handbooks, glossaries and guidelines
- Webinars, workshops and conferences

Oscar K. Buros Library

- The Buros library is staffed 20 hours each week during the school year. Students are welcome to study in the library during these times. Library staff are also happy to help retrieve test materials

THANK YOU!

Questions: jschlueter@buros.org

Find us online at buros.org

***Nebraska
Evaluation and
Research Center
(NEAR Center)***



Purpose of NEAR Center

The NEAR Center provides aid in independent research by helping implement proper:

- **Research Design**
- **Research Methodology**
- **Data Collection**
- **Measurement Tools**
- **Statistical analyses**



Quantitative Services

- Setting up data files
- Instrument development
- Sampling Procedures
- Sample Size/Power Calculations
- Choice of Analysis

Software we use:

- SPSS, SAS, Mplus, and many more



Quantitative Services

Generating & interpreting output

- Descriptive statistics or frequencies
- Correlations
- Chi-square or categorical tests (generalized linear models, loglinear, etc.)
- Non-parametric approaches
- Regressions (simple linear, multiple, logistic, etc.)
- t-tests & Univariate analysis of variance (ANOVA)
- Multivariate analyses (ANVOCA, MANOVA, MANCOVA, canonical correlations)
- Multilevel modeling
- Measures of reliability
- Measurements of validity
- & much more!



Qualitative & Mixed Methods Services

- Discuss design options
- Determine data collection methods
- Set up or integrate data files
- Introduce qualitative software

What will the NEAR center NOT do?

- Generate research questions
- Write results or proofread papers or manuscripts
- Enter, transcribe, or clean data
- Item-writing
- Class assignments or projects
- Instructional lessons or statistical tutoring
- Conjure the results that you desire



WARNING!

(mostly for students)

YOU are responsible for understanding and defending the analyses used!!!

“The NEAR Center told me to do this” is NOT good justification.

Ask and read about your design and analyses

- Know what you did and why
- Bring relevant literature
- We can provide references or resources to facilitate understanding and write-ups!



Fees

Services at the NEAR Center are available completely free to students & faculty within the College of Education and Human Sciences (CEHS)

- \$25/hour for students outside CEHS
- \$50/hour for students & faculty outside UNL
- First hour is free for all paying clients

*NOTE: prices are subject to change



Consultation Time Frames

Clients are limited to one hour per week.

- This includes uploading data, running and debugging computer programs, phone consultations, etc.
- Clients may be afforded more than 1 hour per week at the consultants' discretion and/or based on available funding.

No limits are placed on the number of research projects per client.



Hours & Meetings

Link to meeting scheduler is posted on our NEAR Center Website

- We ask that you schedule your appointment at least 36 hours in advance
- Appointments require a completion of Qualtrics intake form

If available times do not work for you, email a consultant to set up a meeting.

- Located in 209 Teachers College Hall
- Can meet via Zoom for distance clients



Scan to visit the NEAR
Center's Website!

<http://cehs.unl.edu/near/>



Preparing for your first visit

Step one: Visit our website to set up a meeting (Bookings)

Step two: Complete Qualtrics intake form

- Information needed for intake form:
 - Research Questions
 - IRB Number and/or form for human subjects
 - Quan/Qual/MM needs
 - De-identified and tidy data
 - Sharing of instrument, survey, interview script, codebook, etc.
 - Deadline(s) for project



Scan to visit the NEAR
Center's Website!

<http://cehs.unl.edu/near/>



***Counseling &
School Psychology
Clinic (CSPC)***

Who We Are

Heather Hruskoci

she/her

CSPC Director &
Assistant Professor
of Practice



Kellan Willet

he/him

NICPP & CSPC
Assistant
Program Manager



Millie Myers

she/her

CoPsych Clinic GA



Sam Kesselring

she/her

SchPsych Clinic GA



Eekshita Allipilli

she/her

Undergraduate Student Worker

What We Do

The CSPC provides services through

- Therapy & assessment services
- Conducting mental health outcomes research
- Supporting students' clinical growth and development
- Developing community partnerships
- Promoting mental health within and outside the department.



To whom we provide services

The CSPC provides services such as the following to individuals living in NE:

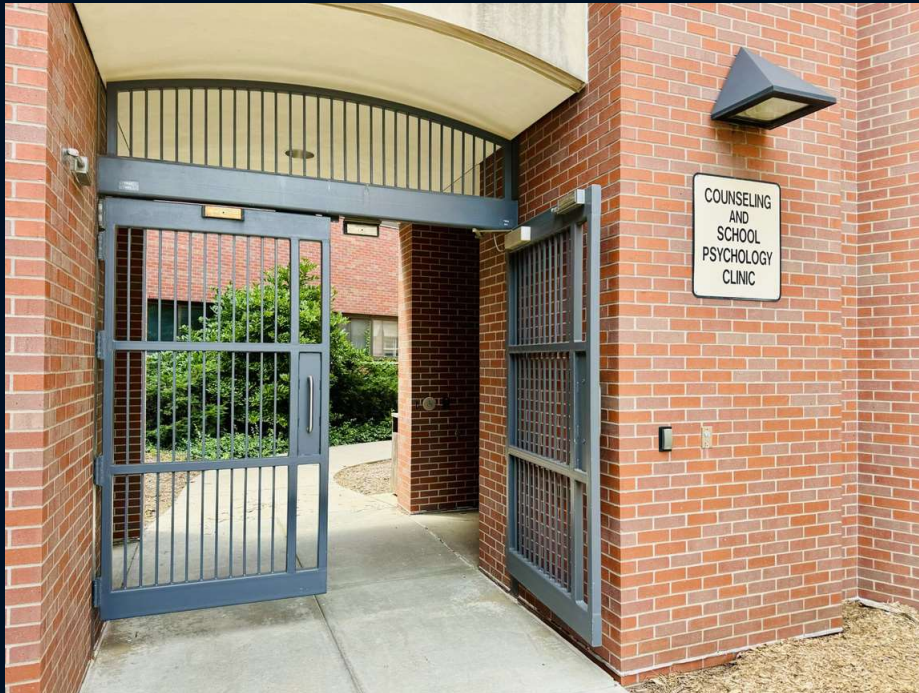
- **Adult Therapy (Ages 18+)***
 - In-person & Telehealth
- **Child Adolescent Therapy (Ages 2+)**
 - In-person & Telehealth
- **Assessments (Ages 16+)**
 - **ADHD & Learning Disability Assessments**

***Students, staff, and faculty within EDPS, in addition to their families, are unable to receive service within the clinic due to conflict of interest.**



Where we're located

The Counseling and School Psychology clinic is located on the ground floor of Teachers College Hall (TEAC) in room 49.



Connect with us!

Follow us on Facebook!

<https://go.unl.edu/cspcfb>



Visit our website:

<https://cspc.unl.edu/>



**Join us for our
end-of-semester
de-stress activities & events!**



Diversity &

Ethnic

Minority

Affairs

Committee

DEMAC

N

DEMAC's Mission

To promote, encourage, and advocate for the understanding and respect of challenges faced by racial, ethnic, sexual, gender, ability, and other socially marginalized identity groups within the Educational Psychology Department, College of Education and Human Sciences, the University of Nebraska, and the community at large. DEMAC also advocates for culturally sensitive solutions to issues faced by the socially minoritized groups.

DEMAC is an organization in place to make sure that the needs of a diverse body of students are met. While we try to select leadership that brings together a lot of unique and valuable perspectives, that does NOT mean that we possess all of the knowledge requisite to ensure that appropriate supports are in place for each student. DEMAC welcomes any suggestions or insight as to how we can create a more inclusive & safe environment for EVERYONE!

DEMAC's Structure

Student Executive Board

- Two (2) Co-Chairs
- One (1) Vice Co-Chair Secretary
- One (1) Vice Co-chair Treasurer
- One (1) Vice Co-Chair Outreach Coordinator
 - + DEI GRA

Faculty Advisory Board

- One (1) faculty member from each department
 - + DEI Chair



2024-2025 DEMAC Student Board

Elia Harper
she/her
Co-Chair



Paige Hesse
they/them
Co-Chair



Davianna Daydreamer
they/them
Vice Co-Chair Secretary



Shamiana Junu
she/her
Vice Co-Chair Treasurer



Jace Meunier
they/them
Vice Co-Chair
Outreach Coordinator

DEMAC Library

Physical Library - Jules' Office (TEAC 114C)

- Physical copies of many textbooks and additional reading material is available!
- To look at the inventory, please visit the DEMAC TEAMS page: <https://go.unl.edu/edpsteams>

*Please email Jules to set up an appointment to visit the library in their office!

PDF Library - TEAMS

- Please visit the DEMAC Library inventory on TEAMS to see if the text you're looking for is available as a PDF
- Email PDF request to Jules & Zee



Scan to join TEAMS!



How to Get Involved

Feel free to contact us if you have any questions or would like to learn more about any of the following:

- Upcoming Events/Outreach
- Help with Advocacy and Sourcing Appropriate Accommodations
- Getting Involved in Leadership or Taking Point on a Project



***Elia
Harper***

eharper6@huskers.unl.edu



***Paige
Hespe***

phespe2@huskers.unl.edu



***Davianna
Daydreamer***

ddaydreamer2@huskers.unl.edu



***Shamiana
Junu***

sjunu2@huskers.unl.edu



***Jace
Meunier***

jmeunier8@huskers.unl.edu



Professional Development Opportunity:

Common Myths About Testing



**Presented by Dr. Dan Robinson
University of Texas at Arlington**

Dr. Robinson is the K-16 Mind, Brain, and Education
Endowed Chair in the Department of Curriculum &
Instruction at the University of Texas at Arlington



Friday, September 6th

2:30–3:30pm TEAC 112



YOU CAN DO IT!!!

GO BIG GRAD



UNIVERSITY of NEBRASKA
LINCOLN

**YOU
GOT
THIS!**