

UNL DEPARTMENT OF EDUCATIONAL PSYCHOLOGY

NEW STUDENT ORIENTATION

August 2025

EVERY PERSON AND EVERY INTERACTION MATTERS



Orientation Agenda/Schedule

- 1. Check in/Breakfast**
- 2. Welcome from the Dean & Introductions**
- 3. Department Overview**
- 4. Counseling & School Psychology Clinic**
- 5. EDPS Office & Beyond**
- 6. Student Resources & Expectations**
- 7. Professionalism**
- 8. Academic Integrity/AI**
- 9. NEAR Center**
- 10. Buross Center for Testing**
- 11. Lunch in CPEH 227**



Welcome from Dean Reese



jreese11@unl.edu

CPEH 135C

472-2913 (Campus phone: 2-2913)



INTRODUCTIONS



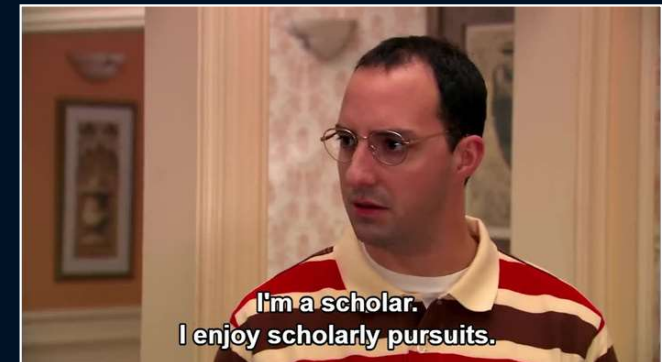
WHO ARE YOU?

Name & Pronouns

Program & Degree Track (e.g., Masters, Ed.S., or Ph.D.)

Where are you from?

One fun fact about you!



take a guess...

What percentage of the
US population has...

↪ A Master's Degree

↪ A Doctoral Degree



Master's Degree



~11%

Source: US Census Bureau (2022)



Doctoral Degree



~ 2%

Source: US Census Bureau (2022)



Keep in Mind

Graduate School is NOT like Undergraduate Education

Graduate-level education takes A LOT of hard work! Think of your time in your graduate program as a full-time job...because it is!

When senior grad students tell junior ones what it's like to work on a thesis/dissertation





Department Overview

Department of Educational Psychology (EDPS)

Eight Centers & Academic Programs:

1. Counseling Psychology (**CoPsych**; APA Accredited Program)
2. Developmental & Learning Sciences (**DLS**)
3. Quantitative, Qualitative, and Psychometric Methods (**QQPM**)
4. School Psychology (**School Psych**; APA Accredited Program)
5. Institutional Research (IR)
6. BUROS Center for Testing
7. Nebraska Evaluation and Research Center (NEAR Center)
8. Nebraska Internship in Professional Psychology (NICPP)



***Counseling &
School Psychology
Clinic (CSPC)***

Who We Are



***Janet Schwartz-
Micheaux***
she/her

CSPC Director &
Assistant Professor
of Practice

Kellan Willet
he/him

NICPP & CSPC
Assistant
Program Manager



Millie Myers

she/her

CoPsych Clinic GA



Eekshita Allipilli
she/her

Undergraduate Student Worker

What We Do

The CSPC provides services through:

- Therapy & assessment services
- Conducting mental health outcomes research
- Supporting students' clinical growth and development
- Developing community partnerships
- Promoting mental health within and outside the department.
- ADOS-2 & MIGDAS Assessments
 - Beginning AY 25-26



To whom we provide services

The CSPC provides services such as the following to individuals living in NE:

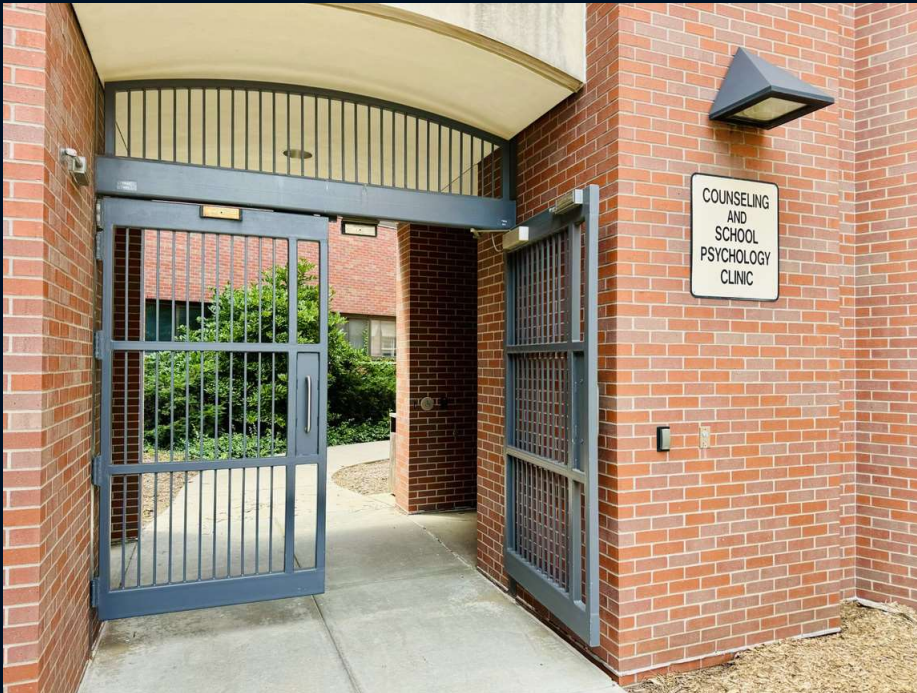
- **Adult Therapy (Ages 18+)***
 - In-person & Telehealth
- **Child Adolescent Therapy (Ages 2+)**
 - In-person & Telehealth
- **Assessments (Ages 16+)**
 - ADHD & Learning Disability Assessments

***Students, staff, and faculty within EDPS, in addition to their families, are unable to receive service within the clinic due to conflict of interest.**



Where we're located

The Counseling and School Psychology clinic is located on the ground floor of Teachers College Hall (TEAC) in room 49.



Requesting Materials

To request materials from the CSPC:

- Complete the [UNL CSPC Materials Request Form](#)
 - Linked in every Weekly Wednesday
- Items you'll need for form include UNL Email address, NUID, Course Number, and Course Syllabus
 - Requests are processed within 24-48hr
 - Typical checkout length: 3 weeks
 - CSPC cannot guarantee material availability if given less than 14 days notice

Questions? Contact Millie Myers via TEAMS (preferred) or email mmyers21@huskers.unl.edu

Requesting Materials

CSPC agreement

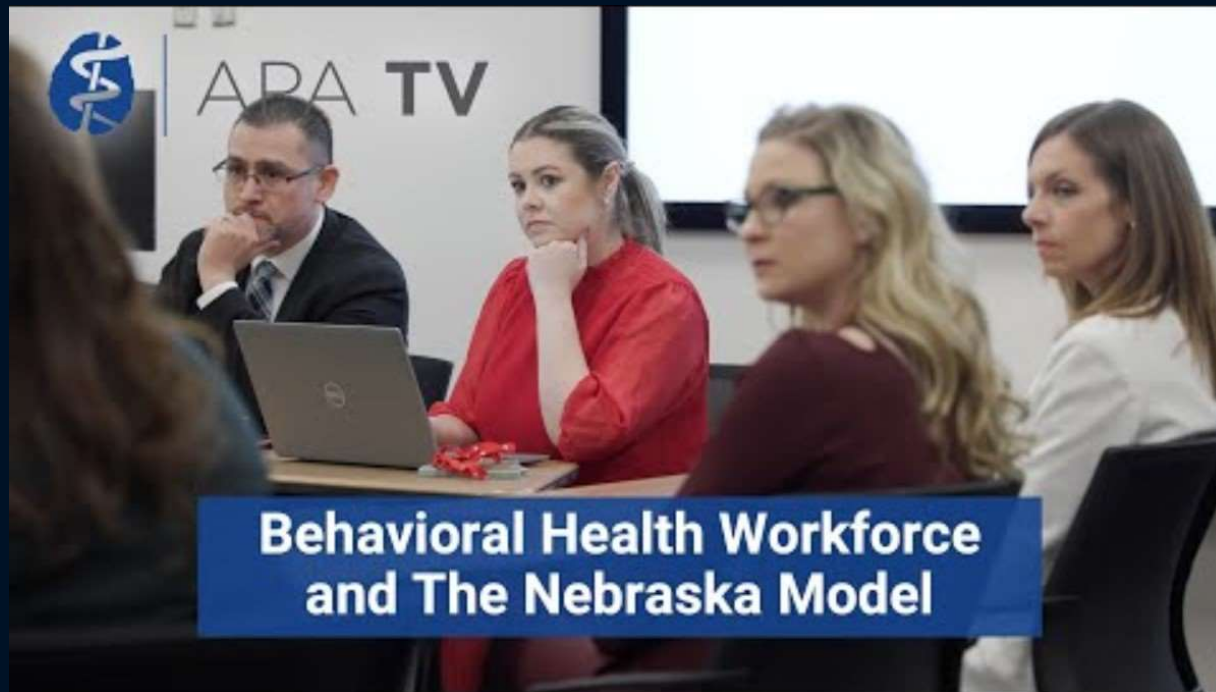
- Materials MUST be returned to the CSPC by the due date, if not renewed or approved by Millie or Kellan
 - This includes test kits, scoring manuals and materials, clipboards/stopwatches, and protocols (both blank and completed)
 - FOR CLINICIANS: Protocols should be stored in the client's file in the clinic
 - FOR COURSE REQUIREMENTS: Protocols should be returned to the clinic by the end of each semester for proper re-stocking of inventory and/or shredding

YOU are responsible for the full replacement cost of any equipment that is stolen, damage, or lost while checked out to you!

- You may NOT checkout equipment for other students, non-students, or suspended users
- You MUST return the equipment by the due date preset or discussed prior to check-out
 - A \$20 per day late fee will be assessed, and restrictions may be applied to your requests in the future
- Repeated incidents of damage, late equipment returns, or other violations of the checkout agreement may result in the revocation of checkout privileges.



Behavioral Health Education Center of Nebraska (BHECN)



Source: <https://youtu.be/omGpkjnHS0Q?feature=shared>

Connect with us!

Follow us on Facebook!

<https://go.unl.edu/cspcfb>



Visit our website:

<https://cspc.unl.edu/>



**Join us for our
end-of-semester
de-stress activities & events!**

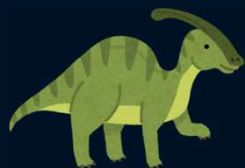




EDPS Office & Beyond

N

Some very important people... EDPS Support Staff



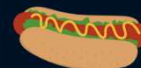
Zee Cronin

mcronin6@unl.edu

she/her

Office Associate

TEAC 114



Jules Meyers

jmeyers19@unl.edu

they/them

Graduate Student Coordinator &
Administrative Associate

TEAC 114C

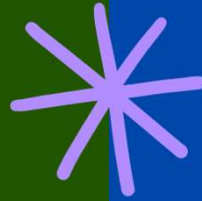




mcronin6@unl.edu

Zee

- Room Reservations
- Door Access & Key Checkout
- Class Edits & Scheduling
- Permission Codes
- Building Maintenance
- General Office Inquiries

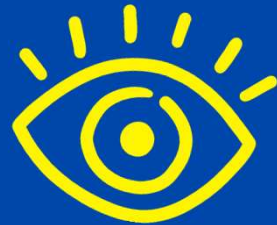


Jules

- EDPS Website Updates
- GTA, GRA, and LecT Contracts
- Fellowship & Award Contracts
- Weekly Wednesday
- Email Listservs
- Departmental Event Planning
- Purchasing Needs & Reconciliation



jmeyers19@unl.edu





Important Resources

Office of Graduate Studies (OGS)

The Office of Graduate Studies is the administrative home for graduate education at UNL. They work closely with individual graduate students and each program's faculty and staff to provide support at all stages of graduate education. Student success depends on a strong partnership between the Office of Graduate Studies and the academic programs that deliver the curriculum, training and, in many cases, financial support.

<https://graduate.unl.edu/>

International Student & Scholar Office (ISSO)

ISSO provides services to J- and F- international students & scholars. The services include providing holistic support through immigration advising and organizing cultural, social, and academic programs & events to support students and scholars' engagement at UNL.

<https://global.unl.edu/isso>

Services for Students with Disabilities (SSD)

SSD meets and facilitates access on an individualized, case-by-case basis. This interactive process requires collaboration and engagement among students, their instructors, supervisors and staff.

<https://www.unl.edu/ssd/>



Other Important Resources

Center for Advocacy, Response, & Education (CARE)

Providing advocacy and support for students, faculty and staff who have experienced sexual violence, domestic/dating violence, sexual harassment and stalking, our advocates are here to help you navigate campus and community resources.

<https://care.unl.edu/>

Counseling & Psychological Services (CAPS)

Counseling and Psychological Services is a multidisciplinary team of psychologists and counselors that works collaboratively with Nebraska students to help them explore their feelings and thoughts and learn helpful ways to improve their mental, psychological, and emotional well-being when issues arise.

<https://caps.unl.edu/>

Office of Academic Success and Intercultural Services (OASIS)

The Office of Academic Success and Intercultural Services works collaboratively with others to transform the campus into a community in which members build bridges of understanding across boundaries of race, gender, culture, socioeconomic class, sexual orientation, ability, religion, nationality, and language

<https://www.unl.edu/oasis/>

A very important resource...

Weekly Wednesday!

All announcements, news, funding opportunities, and department events are posted in our newsletter, which is sent via email listserv every Wednesday afternoon. It is also posted to our website at the link below!

An archive of previous Weekly Wednesday newsletters is available on our website: <https://cehs.unl.edu/edpsych/weekly-wednesday/>



If you have something you would like posted in the Weekly Wednesday, please email the information to Jules by 12pm the Tuesday prior.

Do NOT send information or documents containing:

- Personal information, such as phone numbers or addresses
- Standalone QR Codes
 - (cannot be shared digitally)
- Images with weblinks printed within the photo
- PDFs
 - (PNG/JPEG preferred)

Questions?
Email Jules!



Student Resources & Expectations



first things first...

Things you should have already done...or do ASAP!

- **Check out OGS' "New Graduate Student Checklist"**
 - <https://graduate.unl.edu/relocate/arrival-checklist>
- **Claim your ID and set your password in TrueYou**
 - <https://trueyou.nebraska.edu/account/claim>
- **Activate your UNL email address**
 - <https://nusupport.nebraska.edu/TDClient/33/Portal/Requests/ServiceDet?ID=116#new-students>
- **Get an NCard (ID Card)**
 - <https://scsapps.unl.edu/NCardOnlineApplication/>
- **Register for classes on MyRed***
 - myred.nebraska.edu

***Please meet with your
advisor to plan your classes
and program of studies!**

Additionally...

Read your program handbook

Read the Graduate Student Handbook

<https://cehs.unl.edu/edpsych/current-student-support/edps-graduate-student-handbook/>

Request a no-cost Sender's License from DocuSign



- You will need this to route your forms for signatures!
 - **OTHER ELECTRONIC SIGNATURE PLATFORMS, LIKE ADOBE, ARE NOT PERMITTED.**
- <https://nusupport.nebraska.edu/TDClient/33/Portal/Requests/ServiceDet?ID=27>

***SPEAKING OF
DOCUSIGN...***

Dr. Scott Napolitano

EDPS Graduate Chair

If you need a signature
from the **GRADUATE
CHAIR** of the department,
please route your form to
Scott for signatures!



snapolitano2@unl.edu

N

It's YOUR RESPONSIBILITY!

It is expected that all Graduate Students keep up to date on all rules and regulations of both the Department AND the University.

It is YOUR responsibility to read & know this information!

The Graduate & Professional Catalogue

- Policies: <https://catalog.unl.edu/graduate-professional/policies/>

Department of Educational Psychology

- Website, Handbook, & Orientation Slides (Under "Current Student Support")
 - <https://cehs.unl.edu/edpsych/>

UNL's Student Code of Conduct

- <https://studentconduct.unl.edu/university-nebraska-student-code-conduct>

Graduate & Professional Student Bill of Rights

- <https://graduate.unl.edu/academics/rights>



It's YOUR RESPONSIBILITY!

Download Everything!

- Students should download ALL documents pertaining to their program/degree

Examples include, but are not limited to:

- Course Syllabi
- Signed Assistantship Contracts
 - Fellowship and Award Letters
- All OGS Paperwork
- Any paperwork needed for licensure or accreditation



Annual Student Reviews

Every area's program faculty conduct **Annual Student Reviews** at the end of the Spring semester each academic year to ensure that all students are progressing successfully through their program.

Criteria for **SATISFACTORY PROGRESS** in the department includes:

- A grade of **at least B or better** in all required coursework
- Promptly completing required Graduate Studies **paperwork**
- Successfully **passing** the comprehensive exam
- Successfully **defending** a thesis or dissertation.



Graduate Assistant (GA) Evaluations

Graduate students employed within the Department of Educational Psychology as a Graduate Assistant (GA) are expected to complete a self-evaluation with their supervisor EACH SEMESTER DURING THE LENGTH OF THEIR ASSISTANTSHIP.

- Reviews are to be completed no sooner than ½ way through the semester (7 weeks) and no later than the last day of classes each semester.
- Students on assistantships within EDPS should first fill out the GA EVALUATION FORM and send it to their supervisor for review.
 - Then, the student must collaborate with their supervisor to schedule a time to meet & review their self-evaluation
- At the meeting, students & their supervisor(s) will review the evaluation form. The supervisor will circle a ranking, and both parties will sign the document.
 - Once both parties have signed, the student must route their signed form through DocuSign to obtain signatures from the Department Chairperson (Dr. Swearer) AND their Academic Advisor
- The final signed document should be emailed to Jules no later than the Wednesday of final exam week during a given semester



EDPS Student Library

Physical Library - Jules' Office (TEAC 114C)

- Physical copies of many textbooks and additional reading material is available!
- To look at the inventory, please visit the DEMAC TEAMS page: <https://go.unl.edu/edpsteams>

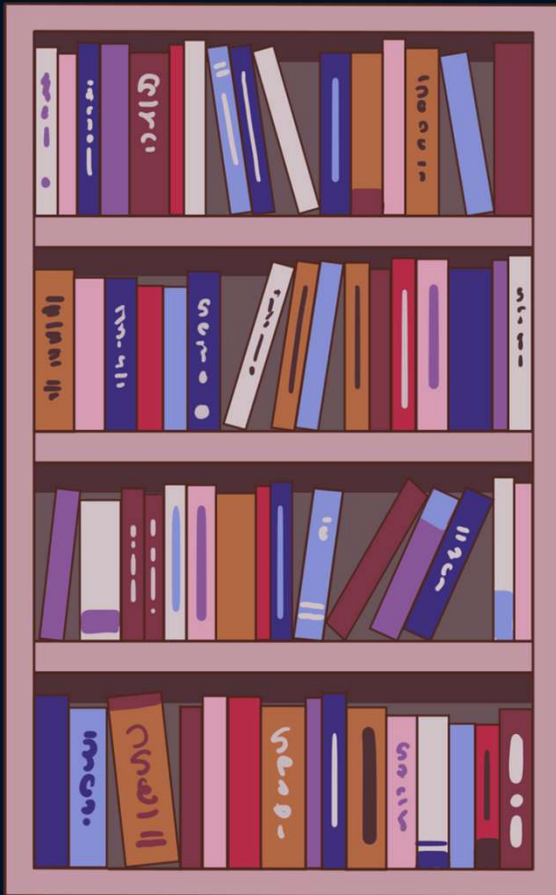
You MUST email Jules to set up an appointment to visit the physical library. PLEASE CHECK TEAMS PRIOR TO REACHING OUT TO ENSURE THE BOOK YOU WISH TO CHECKOUT IS AVAILABLE!



Scan to join TEAMS!

PDF Library - TEAMS

- Please visit the Library inventory on TEAMS to see if the text you're looking for is available as a PDF
- Email PDF request to Jules & Zee
 - Must include full title & author of text



EDPS Student Support Room

For Students & Scholars of all ages to find
their calm & enjoy a moment of Zen



Ideas? Donations? Contact Zee!

Located in TEAC 210



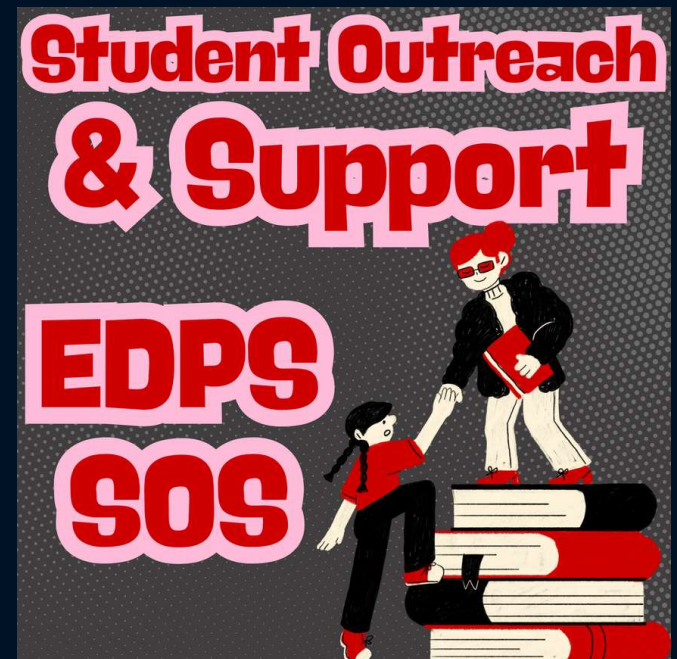
GAB & SOS

GAB = Graduate Advisory Board

SOS = Student Outreach & Support

- The mission of SOS is to assist the department in carrying out its commitment to promote belonging and inclusion for all individuals
- The SOS Executive Board is composed of students and one faculty member from each academic program area. SOS membership is voluntary and open to all students, faculty, and staff in EDPS.
 - ANYONE can contact the SOS board and share ideas, feedback, or suggestions. The SOS board meets with the departmental chair once a month at GAB meetings.
 - All SOS correspondences and activities will be distributed across EDPS email listservs.

<https://cehs.unl.edu/edpsych/about-us/student-outreach-and-support-sos/>



Other Important Resources



Technology Services (ITS)

- For all software/technology needs!
 - <https://its.unl.edu/students/>

EDPS Website

BOOKMARK THIS PAGE!

- <https://cehs.unl.edu/edpsych/home/>

EDPS FAQ PAGE: <https://cehs.unl.edu/edpsych/about-us/frequently-asked-questions/>

Love Library

- Offers Interlibrary Loans!

◦ <https://libraries.unl.edu/>



N

Other Important Resources

Weekly Wednesday

- Written by Jules and sent out every Wednesday
 - Important information regarding funding opportunities, seminars, events, policy changes, etc.
 - Sent via email & posted to website:
<https://cehs.unl.edu/edpsych/weekly-wednesday/>
 - Archive of previous editions of Weekly Wednesday available on website as well!
- If you have something you would like posted to the Weekly Wednesday, please email Jules your information & blurb by 12pm the Tuesday prior!



The Graduate Report

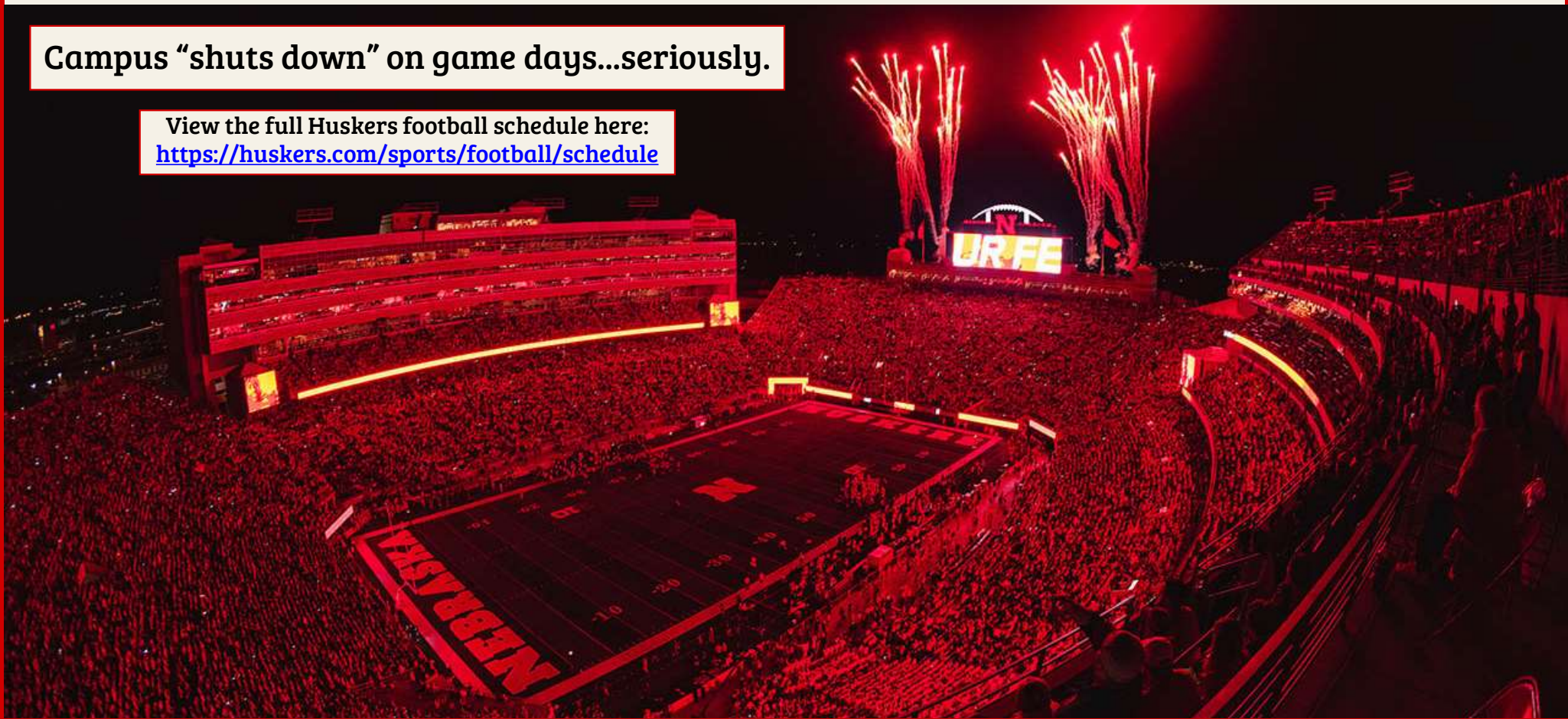
- Digital publication designed to keep graduate students, staff, and faculty informed & connected
- Sent out by the Office of Graduate Studies (OGS) via email every Wednesday
 - <https://newsroom.unl.edu/announce/gradstudies>
- Funding announcements, on-campus opportunities, policy updates, professional development opportunities, & more!

a miscellaneous note...

Campus “shuts down” on game days...seriously.

View the full Huskers football schedule here:

<https://huskers.com/sports/football/schedule>



Professionalism



Professional Email Etiquette

Create a professional signature line!

- Generate a UNL signature line
 - Name, Title, Program, Department, Pronouns - think important information!
- <https://ucomm.unl.edu/signature-generator>



Alexis Chavez (he/him/él)

Graduate Research Assistant

Nebraska Academy for Methodology, Analytics & Psychometrics

Nebraska Center for Research on Children, Youth, Families, & Schools

Quantitative, Qualitative, & Psychometric Methods

Educational Psychology

University of Nebraska–Lincoln

Remember... people are watching!

- You never know if your email will be shared or forwarded!
- Personal information, opinions, or communications that students make in public or that are posted on websites, chatrooms, electrical bulletin boards, or any social media should NEVER be offensive to the community, immoral within accepted community standards, or insulting to ANY person or groups of persons.



Modes of Contacting Faculty & Staff

Start with an Email

- Faculty in the department do not have office phones. The best way to get in contact with a faculty member is to email them directly and set up a time to meet.

Professionalism in Communication

- <https://newsroom.unl.edu/announce/beyondjd/4432/25857>
- Note that some individuals throughout the University have different working hours. Please do not “spam” any Students, Staff, or Faculty members with multiple emails.
- The Department does not give out personal phone numbers for faculty or staff.
- Your advisor and/or supervisor may have a preferred method of communication. It is up to the student and their advisor to specify which modes of communication are most accessible to each of you

Professional Writing

APA Publication Manual (7th edition)

- Also, Perdue OWL:

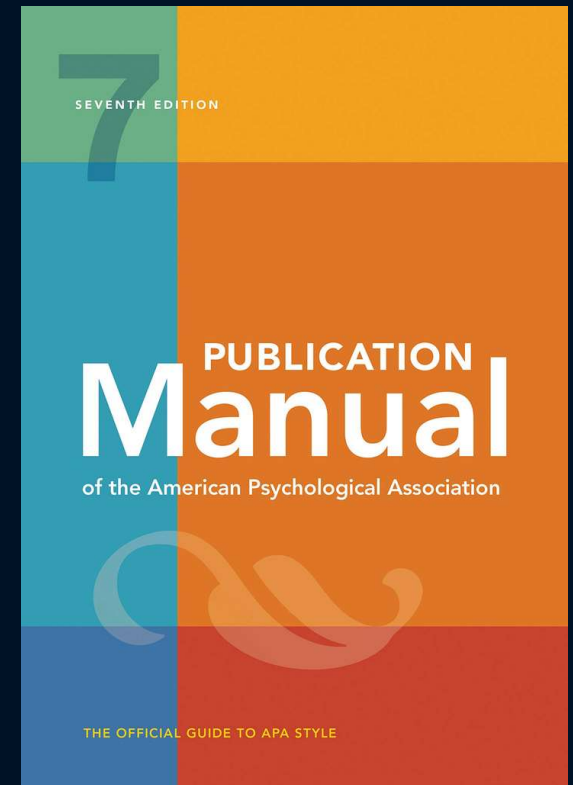
https://owl.purdue.edu/owl/research_and_citation/apa_style/apa_formatting_and_style_guide/general_format.html

UNL Writing Center

- <https://www.unl.edu/writing/>

Recommended Resources

- Hancock (2003). *Ideas Into Words; Mastering the Craft of Science Writing*
- Schimel (2012). *Writing Science*
- Silvia (2007). *How to Write a Lot: A Practical Guide to Productive Academic Writing*



Your Curriculum Vitae (CV)

SUSAN MARIE SWEARER, Ph.D. - CURRICULUM VITA

Office:
Department of Educational Psychology
The University of Nebraska – Lincoln (UNL)
Lincoln, NE 68588-0345

sswearer@unl.edu; sswearer@gmail.com (email)

EDUCATION

Ph.D. (1997) The University of Texas at Austin, Austin, TX. School Psychology. APA accredited School Psychology Program.

M.A. (1993) The University of Texas at Austin. School Psychology. APA and NASP accredited School Psychology Program.

M.S. (1989) The Pennsylvania State University, University Park, PA. Special Education.

B.A. (1987) Swarthmore College, Swarthmore, PA. Psychology.

PROFESSIONAL EXPERIENCE

Administration

2021-present: Chair, Department of Educational Psychology

- Manage 33 faculty, 133 graduate students, and three office staff
- Manage a budget of over \$3 million dollars
- Responsible for academic direction of seven programs (Buros Center for Testing; Counseling Psychology; Developmental Learning Sciences; Institutional Research; Nebraska Internship Consortium in Professional Psychology; Quantitative, Qualitative, and Psychometric Methods; and School Psychology).
- Chair, Chancellor's Commission on the Prevention of Sexual Misconduct at UNL.

What to Include:

- Educational Background
- Research Activities
- Publications (articles, books, etc.)
- Conference Presentations (posters, talks, etc.)
- Grant money or funding
- Awards & honors
- Teaching & TA-ships
- Professional Membership affiliations

A CV is NOT a resume!

EDPS Social Media Policy

Professionalism extends beyond the department!

It is in the best interest of students, especially clinicians, who have social media accounts to set privacy settings on their account(s) to the highest level of security to prevent clients or students from accessing personal information.

Students and clinicians should assume that anything posted on social media may be made public at any time. It is discouraged to perform online searches of clients, as well as students within any courses taught by a GTA.



EDPS Social Media Policy

Professionalism extends beyond the department!

- Students and clinicians should refrain from social media or dating app use during working hours and while in their clinic or lab space
- Students in all programs within EDPS should refrain from social media use during class times, as this is disruptive to their engagement and learning process



CSPC clinicians are expected to turn off notifications and location tracking upon entering the Counseling and School Psychology clinic. For the CSPC's full social media policy, please refer to the clinic handbook.

Academic Integrity



Academic Integrity 1

What is it?

- “ICAI[International Center for Academic Integrity] *defines academic integrity as a commitment to six fundamental values: honesty, trust, fairness, respect, responsibility, and courage.*” ([ICAI, 2021, p. 4](#))

Why is it important?

- ICAI argues that a loss of academic integrity devalues the work of everyone in the academy.
- Basically, if we cannot trust that all students and faculty are maintaining academic integrity, then we cannot trust that two people with the same degree have the same overall level of knowledge/skills, which makes the degree useless.

Academic Integrity 2

Academic Integrity at UNL

- At UNL, Academic Integrity for students is covered in the University of Nebraska Student Code of Conduct Section II (link) and mainly covers five categories:
 1. Cheating
 2. Dishonesty, Falsification, and Fabrication
 3. Harmful Academic Actions Towards Others
 4. Improperly Helping Others
 5. Failing to Follow the Rules

“As required by the Faculty Senate Policy, all faculty members must report any violation of academic misconduct that they determine has occurred in their class to SCCS [Office of Student Conduct & Community Standards].” (emphasis added, [UNL Academic Integrity Webpage](#))



Fair Use vs. Plagiarism

Fair Use

- “Fair use allows limited use of copyrighted material without permission for purposes such as criticism, parody, news, reporting, research and scholarship, and teaching. However, just because a use is educational does not mean that it automatically qualifies as fair use.”
(emphasis added, [NYU Libraries Fair Use webpage](#))
- Since most of what we do is research, scholarship, and teaching, we are lucky that we are allowed to use other people’s work provided we limit the amount and we acknowledge the source.

Plagiarism

- Plagiarism is “an act or instance of using or closely imitating the language and thoughts of another author without authorization and the representation of that author's work as one's own, as by not crediting the original author” ([Dictionary.com](#))
- Plagiarism is bad because it violates the foundations of academic integrity (e.g., honesty, respect) and therefore also violates the UNL Student Code of Conduct



Types of Plagiarism

Types of Plagiarism

- “turning in someone else's work as your own
- copying words or ideas from someone else without giving credit
- failing to put a quotation in quotation marks
- giving incorrect information about the source of a quotation
- changing words but copying the sentence structure of a source without giving credit
- copying so many words or ideas from a source that it makes up the majority of your work, whether you give credit or not (see our section on "fair use" rules)” ([Plagiarism.org](https://plagiarism.org))
- presenting your own ideas or writing as new when they have appeared elsewhere previously (i.e., self-plagiarism)

The Other AI

What is it?

- Generative artificial intelligence (AI) assistants such as ChatGPT, Gemini, etc. are large language models that can generate “new” answers/images/sounds based on user prompts

What are the concerns with students using AI?

- Cheating
- Plagiarism
- Spreading Misinformation
- Not building critical thinking skills

Use of AI at UNL

UNL Center for Transformative Teaching (CTT)

- UNL does not currently have a blanket policy on the use of AI, leaving this up to individual instructors, provided the use of AI does not violate academic integrity.

The UNL CTT provides resources for classroom AI policy creation including:

- Unrestricted use
- Use allowed under specific circumstances
- Use prohibited entirely

EDPS AI Policy

AI tools should not be used in any coursework, including exams, unless explicitly directed by the instructor of a course for learning opportunities.

ANY WORK SUPPORTED BY AI MUST BE CRITICALLY EDITED, REVIEWED, AND APPROPRIATELY ATTRIBUTED AS PART OF THE WORK.

Students must consult with their faculty instructors & supervisors PRIOR TO using AI tools for any portion of their academic journey.

If AI tools are used to assist with any portion of academic work, students are required to include a disclosure indicating when and how the tools were used.



EXAMPLE

“Portions of this paper were assisted using ChatGPT on [DATE] for [REASON].”

N

Acceptable Uses of AI

UNL Center for Transformative Teaching (CTT)

“Acceptable uses:

- Using AI to help brainstorm ideas and organize thoughts.
- Using AI image generators to create visuals for storyboards.
- Using AI to help with grammar and spelling checks.
- Using AI to explain confusing concepts in simple language.
- Using AI to translate text from one language to another.
- Using AI to help diagnose error messages.”



Unacceptable Uses of AI

UNL Center for Transformative Teaching (CTT)

“Unacceptable uses:

- Using AI to generate content for assignments.
- Using AI image generators to create visuals for journalism or fact-based reporting, photo journalism, or anything you’re creating that’s represented as real.
- Using AI to plagiarize content from other sources
- Using AI to answer exam or quiz questions
- Using AI to automate the completion of assignments.”



Ethical Consideration for AI

UNL Center for Transformative Teaching (CTT)

“Other ethical considerations to keep in mind when using AI for college assignments:

- **Be transparent with your instructor. If you are using AI to help with your assignments, let your instructor know. This will help to avoid any misunderstandings or accusations of plagiarism.**
- **Avoid plagiarism. Using AI-generated content without proper citation could result in academic dishonesty charges**
- **Use AI responsibly. Do not use AI to cheat or to automate the completion of assignments. Instead, use it to help you learn, understand, and improve your academic skills.”**
- **Note: Many professional societies, journals, book publishers, and funding agencies are now requiring that you disclose any and all use of AI when submitting presentations, articles, grants, etc.**



Academic Integrity 3

YOU are ultimately responsible
for maintaining academic
integrity, so if in doubt...

ASK!

NEAR
CENTER



Quantitative Services

- Setting up data files
- Instrument development
- Sampling Procedures
- Sample Size/Power Calculations
- Choice of Analysis

Software we use:

- SPSS, SAS, Mplus, and many more



Quantitative Services

Generating & interpreting output

- Descriptive statistics or frequencies
- Correlations
- Chi-square or categorical tests (generalized linear models, loglinear, etc.)
- Non-parametric approaches
- Regressions (simple linear, multiple, logistic, etc.)
- t-tests & Univariate analysis of variance (ANOVA)
- Multivariate analyses (ANVOCA, MANOVA, MANCOVA, canonical correlations)
- Multilevel modeling
- Measures of reliability
- Measurements of validity
- & much more!



Qualitative & Mixed Methods Services

- Discuss design options
- Determine data collection methods
- Set up or integrate data files
- Introduce qualitative software

What will the NEAR center NOT do?

- Generate research questions
- Write results or proofread papers or manuscripts
- Enter, transcribe, or clean data
- Item-writing
- Class assignments or projects
- Instructional lessons or statistical tutoring
- Conjure the results that you desire



WARNING!

(mostly for students)

YOU are responsible for understanding and defending the analyses used!!!

“The NEAR Center told me to do this” is NOT good justification.

Ask and read about your design and analyses

- Know what you did and why
- Bring relevant literature
- We can provide references or resources to facilitate understanding and write-ups!



Fees

Services at the NEAR Center are available completely free to students & faculty within the College of Education and Human Sciences (CEHS)

- **\$25/hour for students outside CEHS**
- **\$50/hour for students & faculty outside UNL**
- **First hour is free for all paying clients**

***NOTE: prices are subject to change**



Consultation Time Frames

Clients are limited to one hour per week.

- This includes uploading data, running and debugging computer programs, phone consultations, etc.
- Clients may be afforded more than 1 hour per week at the consultants' discretion and/or based on available funding.

No limits are placed on the number of research projects per client.



Hours & Meetings

Link to meeting scheduler is posted on our NEAR Center Website

- We ask that you schedule your appointment at least 36 hours in advance
- Appointments require a completion of Qualtrics intake form

If available times do not work for you, email a consultant to set up a meeting.

- Located in 209 Teachers College Hall
- Can meet via Zoom for distance clients



Scan to visit the NEAR
Center's Website!

<https://near.unl.edu/>



Preparing for your first visit

Step one: Visit our website to set up a meeting (Bookings)

Step two: Complete Qualtrics intake form

- Information needed for intake form:
 - Research Questions
 - IRB Number and/or form for human subjects
 - Quan/Qual/MM needs
 - De-identified and tidy data
 - Sharing of instrument, survey, interview script, codebook, etc.
 - Deadline(s) for project



Scan to visit the NEAR
Center's Website!

<https://near.unl.edu/>



BUROS

CENTER FOR TESTING

TEST REVIEWS • ASSESSMENT LITERACY
PSYCHOMETRIC CONSULTING

WWW.BUROS.ORG

UNIVERSITY OF
Nebraska
Lincoln | COLLEGE OF EDUCATION
& HUMAN SCIENCES

The need for critical test reviews

The use of psychological tests increased in the 1920s.

There was no regulation to control the quality of these tests in the United States. This is still true today.

There were no quantitative criteria for evaluating tests.

Test reviews that did exist were subjective.

Recognizing the need to hold test publishers accountable for their claims, Oscar Buros developed a reference book series to provide critical reviews of commercially available testing products. In 1938, he published *The Nineteen Thirty Eight Mental Measurements Yearbook*.

“Oscar Buros believed that it was incumbent upon the profession to monitor itself and he hoped that reviews of tests would spur improvements in test manuals, descriptions of the technical quality of tests, and test-related research that would be beneficial to prospective test users.”

Carlson, J. F., & Geisinger, K. F. (2012). Test reviewing at the Buros Center for Testing. *International Journal of Testing*, 12, 122-135.



Oscar Krisen Buros

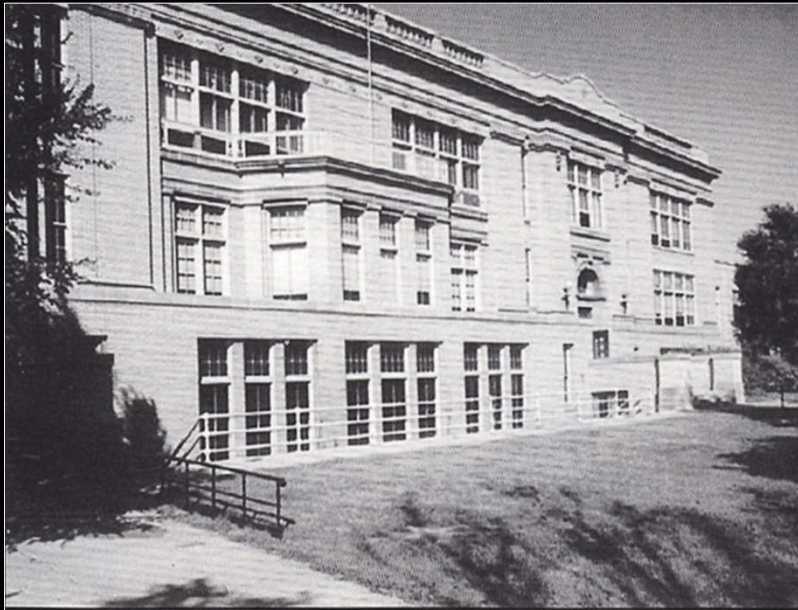
From 1938 until his death in 1978, Oscar (and Luella) Buros published eight *MMYs*.

Each *MMY* is a compendium of independent reviews of commercially available tests.

In 1941, they established The Gryphon Press and published under this imprint thereafter.

The house in New Jersey where Oscar and Luella Buros lived with their cats on the second floor, rented out the first, and produced the *MMYs* in the basement.





Bancroft Hall at UNL was the second home of the (Buros) Institute of Mental Measurements, now known as the Buros Center for Testing.

After Oscar's death, Luella ensured his work would continue, first by completing the 8th *MMY* and then by finding a new home for the Institute of Mental Measurements.

Ultimately, she transferred the Institute's holdings to UNL.

It was the university's first major research center.

Luella Buross (1901 – 1995)

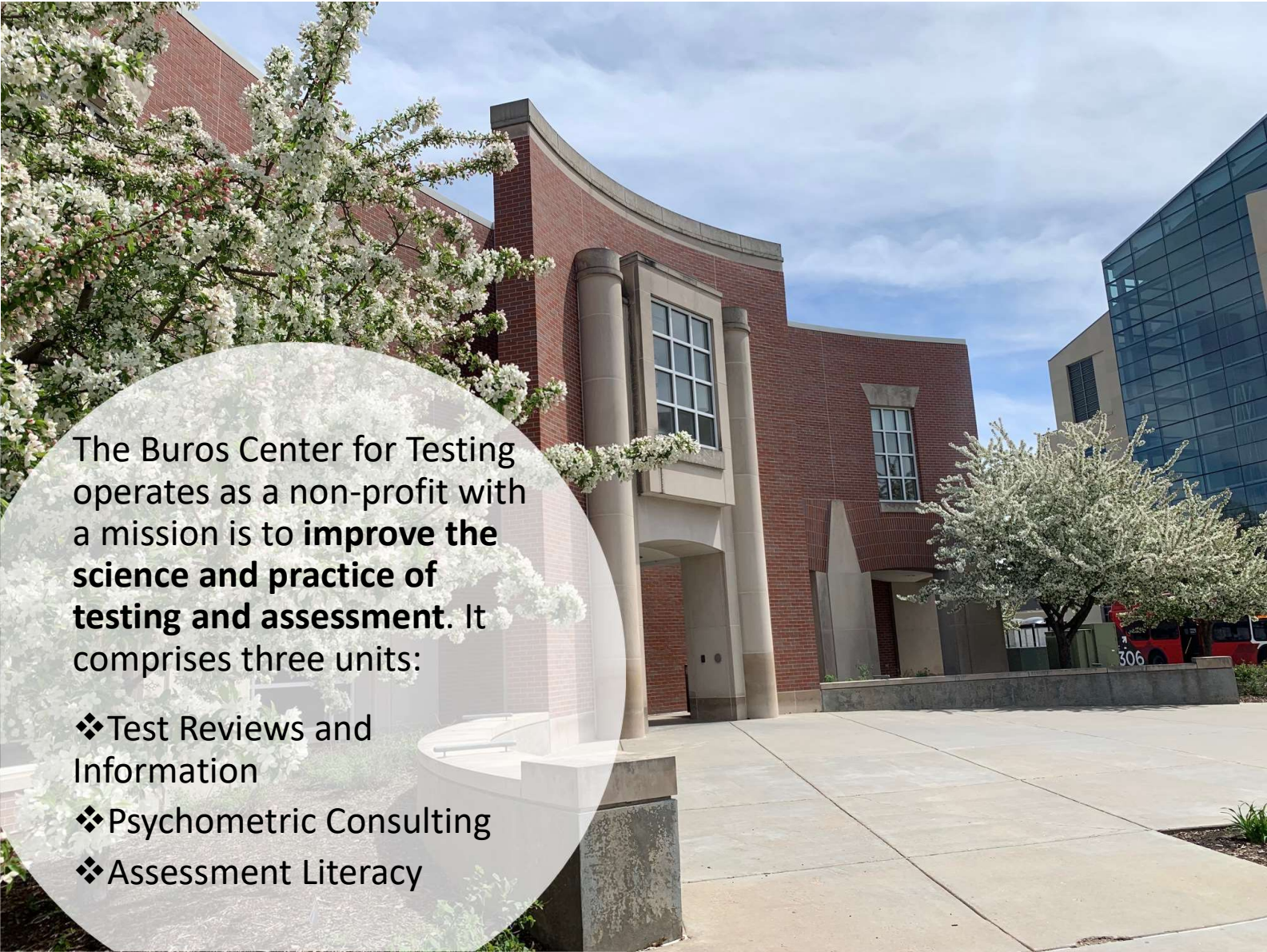
Educated at The Ohio State University; Columbia University, Teachers College, and Rutgers University.

Painter, sculptor, photographer, and peace activist.

Only woman named to the “Famous Women in Testing” roster who was not a testing expert, per se, and did not hold an advanced degree.

Founding contributor to the journal *Peace and Conflict: A Journal of Peace Psychology*, currently published by the American Psychological Association.

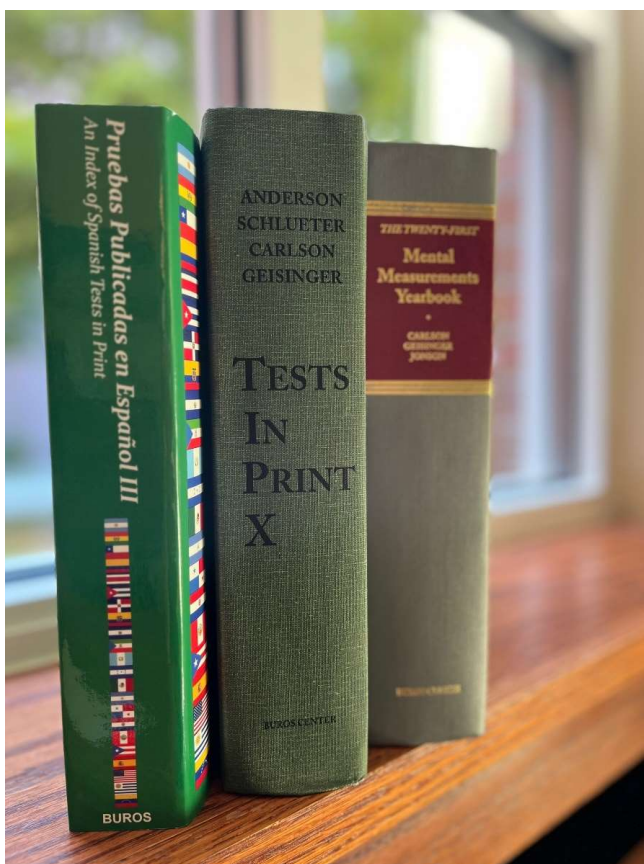




The Buros Center for Testing operates as a non-profit with a mission is to **improve the science and practice of testing and assessment**. It comprises three units:

- ❖ Test Reviews and Information
- ❖ Psychometric Consulting
- ❖ Assessment Literacy

Test Reviews and Information



As the publishing arm of the Buros Center, this unit publishes reference volumes that provide descriptions and reviews of commercially available tests in English and Spanish.

Publication of the first *Mental Measurements Yearbook* in 1938 established a tradition that continues today.

The Mental Measurements Yearbook (MMY)

The Ninth Mental Measurements Yearbook (1985) was the first MMY published at UNL.

The 21st volume was published in 2021. The 22nd volume is expected in December 2025.

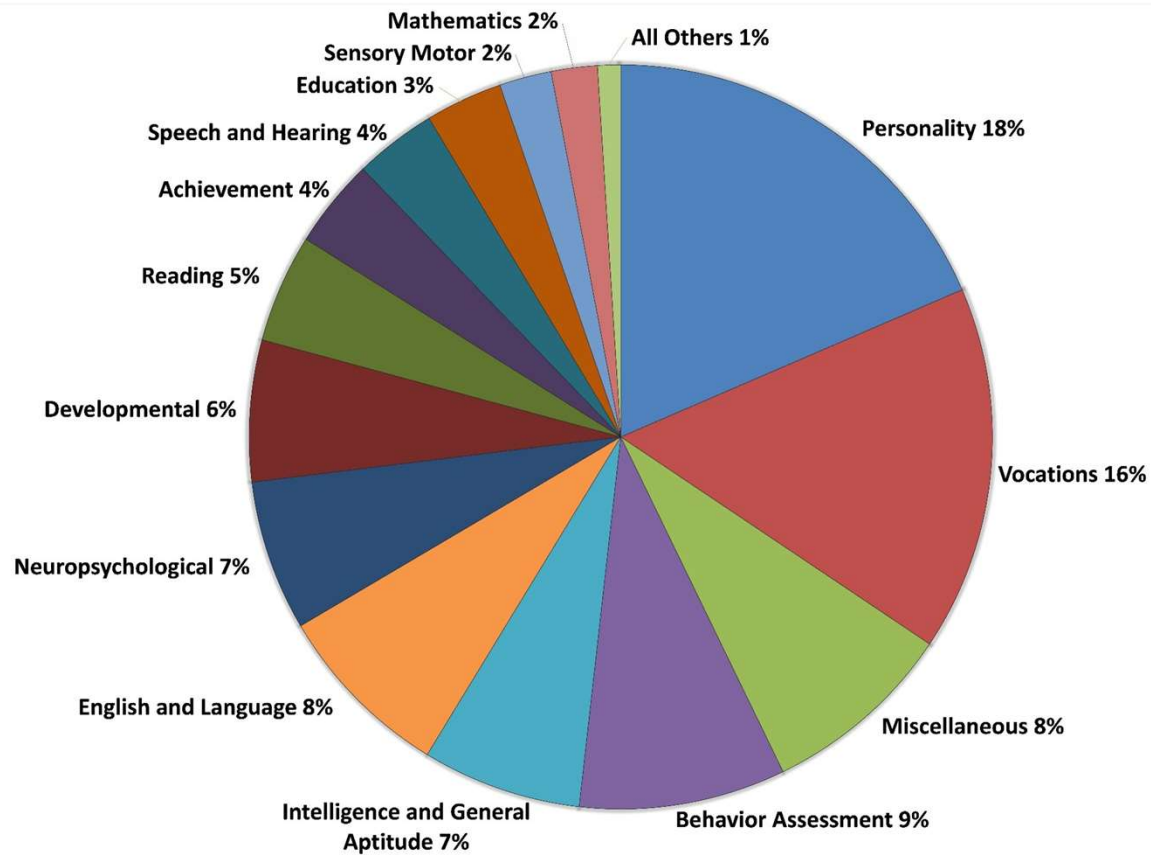
Reviewers are doctoral-level professionals who volunteer their expertise to this effort.

Buros Center editors match reviewers with tests based on professional expertise.



Gary Anderson

Test Classifications and Percentages of Tests Reviewed in Each Category since 1998

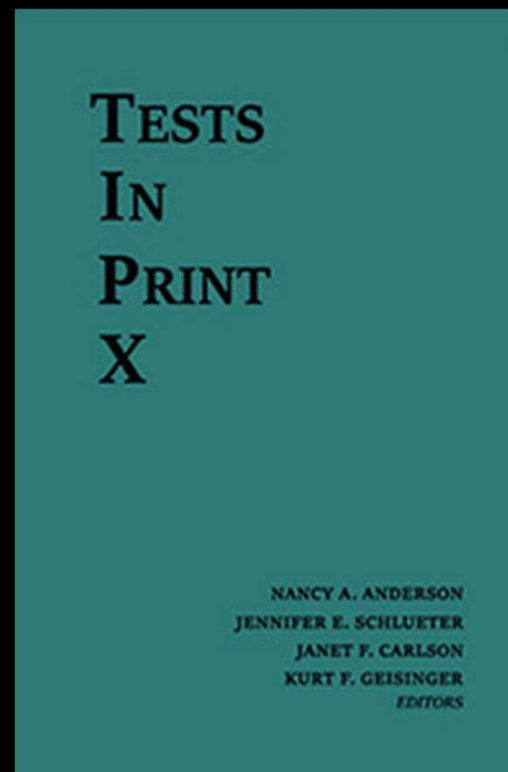


Tests in Print (TIP)

This directory-style reference was first published in 1961. The 10th edition was published in 2022.

TIP compiles descriptions of all known commercially available tests in English even those that are not eligible for review in *MMY*.

The cross references in *TIP* test entries direct interested parties to corresponding *MMY* reviews.



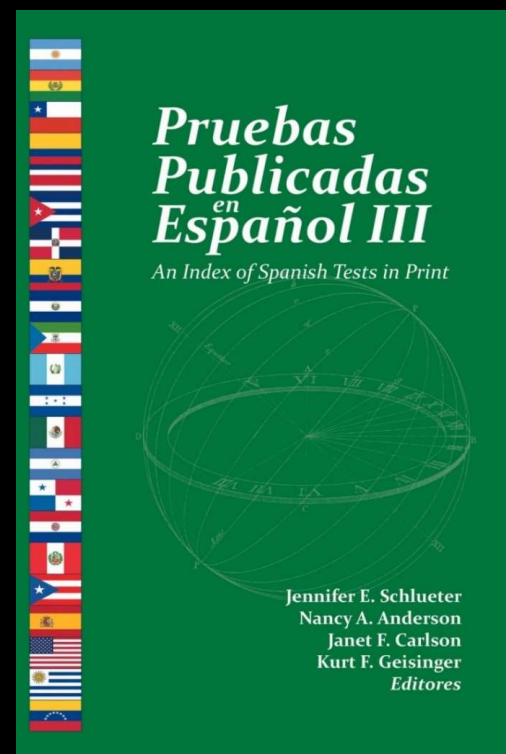
Pruebas Publicadas en Español: An Index of Spanish Tests in Print (PPE)

First published in 2013, *PPE* provides information about tests available partly or wholly in Spanish.

Each description appears in a side-by-side, dual-language format.

Descriptions encompass a range of Spanish tests, from those developed entirely in Spanish to those with only one or two forms in Spanish.

The third and most recent edition was published in 2023.



Electronic Access

Buros reference volumes are available in print or in digital format via electronic databases from EBSCO and Ovid.



- Love Library subscribes to “Mental Measurements Yearbook with Tests in Print Internacional.”

You can access this information FREE from UNL’s library!

PPE is also available as a searchable PDF.

Psychometric Consulting



Evaluation and Oversight

- Proprietary testing programs

Consultation and Training

- Advise on best practices for test development, validation, and maintenance

Psychometric Research

- Alignment studies, standard setting, validity and reliability evaluation

Audit and Accreditation

- Stage One
- Stage Two

Assessment Literacy

- Established in 2011 to extend the Center's mission.
- Educates test authors, publishers, and users about sound measurement practices.
- Primary audiences include school psychologists (NASP CPD provider), clinical and counseling psychologists (APA CE provider), graduate students, educators, among others.
- Resources enhance the ability of individuals to develop and use assessments in accordance with professional standards for responsible test use.

Assessment Literacy

Products and Services



One or two series offered annually
Trauma Assessment series begins Sept 10
No charge for UNL students and faculty
Contact jjonson@buros.org
mjones103@huskers.unl.edu

Webinars, conferences, lectures
Most offered for CE or CPD credit
No charge for selected videos
Used by faculty to enrich course content

Buros Library

Special reference library housed at UNL for 45 years with collections including

- 9,000 educational and psychological tests
- 2,000 books on testing, assessment, and measurement
- 650 books from Oscar's library
- original works of art by Luella Buros



Some of our test holdings



Tests have been indexed and described in *Tests in Print* or *Pruebas Publicadas en Español* and most have been reviewed in an MMY. All tests are treated as secure tests.

Recapping Resources

Electronic access to test information and reviews

- EBSCO databases at UNL library (search “Mental Measurements”)

Assessment Literacy resources buros.org/assessment

- Handbooks, glossaries, and guidelines
- Webinars, workshops, and conferences

Oscar K. Buros Library of Mental Measurements

- The Buros library is staffed 20 hours each week during the school year. You are welcome to study in the Library during these times. Library staff will retrieve test materials for you, as needed.



One More Thing

We typically hire about 6 half-time (19.6 hours/ week) GAs each year.

—Each unit within the Buros Center hires at least one GA.

Open positions are posted through EDPS. Students from any program are welcome to apply.

Many GAs stay with us year after year.

THANK YOU!

Questions: jcarlson@buros.org

Find us online at buros.org

YOU CAN DO IT!!!

GO BIG GRAD



UNIVERSITY of NEBRASKA
LINCOLN

**YOU
GOT
THIS!**