

Weekly Wednesday

Department of Educational Psychology

What's Inside:

- 1) Top Stories
- 2) News
- 3) Upcoming Events
- 4) The Week Ahead





Need to take EDPS 870?

It will be offered this summer!

If you need a permission code to register, please request via CARS on our website.

<https://cehs.unl.edu/edpsych/current-student-support/course-access-request-system-cars/>

Understanding Health Insurance as a Graduate Student

Not sure how health insurance works as a graduate student? Join this Red Talk to learn about coverage options, common insurance questions, and resources available to help you navigate your health care with confidence.



April 21, 2026
12-1pm Via Zoom

Registration Required!
CLICK HERE TO REGISTER

Learn more at the link below:

<https://graduate.unl.edu/graduate-support/redtalks/>

EDPS GA EVALUATIONS

DEADLINE: MAY 6TH at 4pm ★★★★★

do not delay meeting with your supervisor!!!

[HTTPS://CEHS.UNL.EDU/EDPSYCH/CURRENT-STUDENT-SUPPORT/](https://cehs.unl.edu/edpsych/current-student-support/)

ROUTING ORDER FOR SIGNATURES:
You → Your supervisor → Your advisor → the Department Chair (Sue Swearer)
once complete: email to Jules

Did you find an assistantship outside of EDPS for next year?

PLEASE SEND JULES A COPY OF YOUR SIGNED CONTRACT!



EDPS IN THE NEWS!

Davianna Daydreamer, Jace Meunier, and Dr. Mun Yuk Chin are researching financial stress as a key challenge for Nebraska mental health practitioners.

Mun Yuk Chin, assistant professor of counseling psychology and a CYFS research affiliate, recently explored how those stressors, especially personal finances, impact practitioners' work satisfaction and personal mental health.

Read the full story at the link below!

<https://cehs.unl.edu/news/research-uncovers-financial-stress-key-challenge-nebraska-mental-health-practitioners/>



RESEARCH PARTICIPANTS NEEDED!

Navigating Bullying and Belonging: How Does Racial Identity Influence the Experiences of Black Youth?

What's Involved?

- An online survey
- Virtual focus group discussion
- Amazon gift card raffle entry for participation in focus group

Eligibility Requirements:

- Identify as Black/African American or Biracial/Multiracial with Black ancestry
- 18-30 years old
- Experienced bullying targeting your race, gender, sexuality, religion, or other personal characteristic
- Attended middle and high school in the United States

To participate, visit:
https://go.unl.edu/radliff_research

Questions? Contact Dr. Radliff at Radliff.2@osu.edu





FEEL LIKE YOU NEED TO SCREAM?

UNL'S LOVE LIBRARY HAS YOU COVERED!

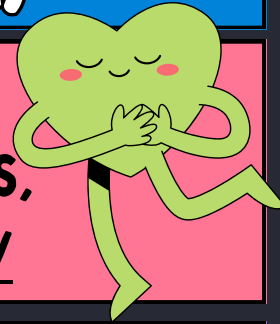


As a finale to Love Library's LoveFest, the Dean of the Libraries will lead campus personnel through a coordinated, cathartic release of academic stress by streaming as loud as we can.

If the neighbors ask, tell them it's "acoustical engineering research."

**FRI. APRIL 17TH LOVE LIBRARY SOUTH LAWN
11AM-2PM (PRIMAL SCREAM AT 2PM)**

LOVE LIBRARY LOVEFEST CONTINUES THROUGH THE END OF THIS WEEK! FOR A FULL SCHEDULE OF EVENTS, VISIT: [HTTPS://LIBRARIES.UNL.EDU/LOVEFEST-2026/](https://libraries.unl.edu/lovefest-2026/)



2025-26 Buffett Institute Graduate Scholars Showcase

The Buffett Early Childhood Institute invites you to meet the next generation of researchers at the 2025-26 Buffett Institute Graduate Scholars Showcase.

Ali Shull, a current DLS PhD student, was one of the 2025-2026 Buffett Graduate Scholars!



**Wednesday, April 29
4:30-6pm
Davis Global Center**

Please RSVP by **Monday, April 20th!**

The event will feature brief presentations and a Q&A poster session with University of Nebraska doctoral students. Their projects explore how maternal stressors can impact babies' short- and long-term health, health outcomes related to diabetes during pregnancy, and parenting content on social media platforms like TikTok and Instagram.

RSVP: https://gobuffettinstitute.nebraska.edu/graduate_scholars_2025-26

UPcoming Events

The Week Ahead



Upcoming Office Hours

April 16-22, 2026

Thurs. April 16: 10-11am

Fri. April 17: No Office Hours

Mon. April 20: 1-2pm

Tues. April 21: 10-11am

Wed. April 22: 10-11am (Via Zoom)

Susan Swearer, Ph.D., LP
Chairperson
Department of Educational Psychology
University of Nebraska-Lincoln



NEED TO MEET W/ JULES?

If you would like to meet with Jules, please send them an email to set up an appointment.

APPOINTMENTS AVAILABLE IN-PERSON AND VIA ZOOM

EMAIL JULES
JMEYERS19@UNL.EDU

Want to reserve a room?

Email Zee!

Please include the following information with your request:

- Date of event
- Start & end time
- Number of participants
- Technical needs
- Event title

*Note: please submit your request no later than 24hrs before your reservation!



need to request materials from CSPCG?



Microsoft Form Link: <https://go.unl.edu/cspcmaterials>

