

April 2, 2025

VOLUME 149

Weekly Wednesday

Department of Educational Psychology

What's Inside:

- 1) Top Stories**
- 2) Student Support**
- 3) Learning Opportunities**
- 4) April Happiness**
- 5) The Week Ahead**



**Student
Outreach &
Support
(SOS)**



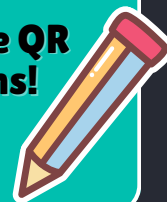
NOMINATIONS NOW OPEN!



Interested in joining SOS? Want to nominate a friend you think would support the student body of EDPS in a meaningful way? NOMINATIONS ARE NOW OPEN FOR SOS FOR AY 25-26!

You can nominate yourself or a fellow student! Scan the QR code or visit the link below to submit your nominations!

<https://go.unl.edu/sosay2526>



SOS & CSPC DE-STRESS EVENT

**JOIN US ON FRIDAY, APRIL 11TH IN THE CSPC
FOR AN AFTERNOON OF DE-STRESS EVENTS!**



PAINTING!



SNACKS!



BOARD GAMES!



THERAPY DOGS!



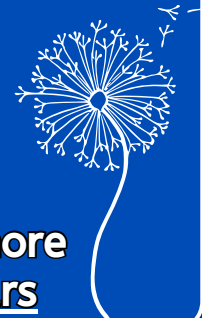
**FRIDAY, APRIL 11TH 4-6pm
in the CSPC
(bottom floor of TEAC)**

\$25,000 Fellowship Opportunity!

Buffett Institute Graduate Scholars

The Buffett Early Childhood Institute at the University of Nebraska is currently accepting applications from advanced doctoral students within the university system for one-year fellowships worth up to \$25,000.

Completed applications are due by Friday, April 25th. For more information, visit: <https://go.unl.edu/buffettgraduatescholars>



Summer Internship Available!

UNL's Gender & Sexuality Center (GSC) is hiring a summer intern!

This position is only available to graduate students, and will begin in June.

Apply at the link below:

<https://go.unl.edu/gsc1255>

APPLY NOW



FALL REGISTRATION NOW OPEN!

GRADUATE STUDENTS, ENROLLMENT FOR FALL 2025 HAS BEGUN! PLEASE REGISTER FOR FALL CLASSES ASAP.

IF YOU ARE UNSURE OF WHICH COURSES YOU NEED TO TAKE, PLEASE SET UP AN APPOINTMENT WITH YOUR ADVISOR.

Some classes may require a permission code in order to register for the course. This permission can only be granted by the instructor. Please utilize our Course Access Request System (CARS) to request a permission code. You can find CARS under the "Current Student Support" tab on our website. If you do not see your course or instructor listed in CARS, please email the instructor directly with your request to enroll and cc Zee Cronin (mcronin6@unl.edu). Should the instructor approve, Zee will generate a permission number for you.



Summer Tuition Remission



Did you have an assistantship during the previous Academic Year? You likely have summer tuition remission! Want to know how many credit hours of summer tuition remission you have? HERE'S HOW TO FIND OUT:

1. Email Jules a copy of your academic year assistantship contract Pretty easy, right?
2. Ask them how many credit hours of tuition remission you have based on your contract!

BE SURE TO INCLUDE A COPY OF YOUR CONTRACT!
Jules will need to look at your contract to tell you an accurate number of summer credits you have.



Spring WORKSHOP PATHWAYS TO SUCCESS Building Community: Thriving not just Surviving



Learn from Husker faculty how to find and build a professional community that helps you thrive throughout your career. The event is open to all faculty, postdoctoral fellows, staff and students.

Seating is limited
Register today!

CLICK HERE TO REGISTER!

April 10th - 11:30am-1:30pm
Red Cloud, Willa Cather Dining Complex



with Dr. Leila Wood

Health Equity Grand Rounds presents...

The Economic and Health Impacts of Intimate Partner Violence

Intimate Partner Violence (IPV) impacts health outcomes and economic stability for survivors, and addressing their needs can help prevent re-victimization.

Dr. Wood, Professor at UTHHealth, will join us for our April Health Equity Grand Rounds event to present her research on community-based economic and health strategies for those affected by IPV. She will present on how Intimate Partner Violence (IPV) impacts health outcomes and economic stability for survivors, while also addressing how health and economic needs can help to prevent IPV re-victimization. In this presentation, research on community-based economic and health strategies will be shared, along with implementation strategies.

This event is FREE and open to the public. Registration is required.

To register, click the button to the right, or visit:

<https://go.unl.edu/herapril2025>

REGISTER HERE

FREE ZOOM TRAINING ON MOTIVATIONAL INTERVIEWING!

Motivational Interviewing (MI) is an evidence-based technique of effectively communicating with others, to gain rapport and trust, obtain more information, address risk behaviors, and evoke internal motivation to sustain long-term behavior change. MI can also be paired with other modalities to increase effectiveness.

MOTIVATIONAL INTERVIEWING: A FOCUS ON EVOCATION TECHNIQUES TO ELICIT AND STRENGTHEN CHANGE TALK

Gaining skill proficiency in this technique is a process and like learning a new language requires much practice and feedback. Participants will learn the history and broad application and pairing of MI as an evidence-based practice and gain a better understanding of the use of ten Evoking Change Talk Techniques to strengthen client commitments to change. This training is for participants new to MI or trained previously in MI at all levels.

COURSE OBJECTIVES:

1. Describe the history and development of MI & how it's learned | 2. Explain how the use of MI approaches differ from traditional approaches in motivating behavioral changes, and how it can be paired with other evidence-based modalities to increase effectiveness | 3. Display the Spirit of MI and the ten Evoking Change Talk techniques to elicit and strengthen client/patient behavior change

APRIL 8TH, 8:30AM-12:00PM CENTRAL



FEATURING
BRENDA JENNINGS

3.5 CE
CREDITS

CLICK HERE TO REGISTER!



APRIL HAPPINESS



April 2025 Happiness Calendar

This month, invite people in.

Keep up with the latest on the science of connection, compassion, and happiness by [subscribing to our newsletters](#).

SUNDAY	MONDAY	TUESDAY	WEDNESDAY	THURSDAY	FRIDAY	SATURDAY
 Greater Good Science Center ggsc.berkeley.edu greatergood.berkeley.edu		1 Observe the beauty of nature .	2 Help your neighbor .	3 Reflect on how you deal with conflict .	4 Follow your curiosity .	5 See the good in your partner.
	6 Watch an inspiring movie .	7 Find a common goal .	8 Reach out to a friend.	9 Help everyone feel like they belong .	10 Celebrate someone else's joy .	11 Make small talk with a stranger.
	12 Invite people to share their beliefs .	13 Find a local group to join.	14 Remember a time you felt loved .	15 Find your voice .	16 Move your body in a way that feels good.	17 Help each other through a crisis.
	18 Get involved in a cause.	19 Get together face to face .	20 Do something creative .	21 Focus on growing and improving .	22 Advocate for women .	23 Be present with someone.
	24 Don't believe everything you hear .	25 How self-compassionate are you? Take our quiz to find out.	26 Notice the support you receive from others.	27 Take a break to meditate .	28 Practice kindness today.	29 Listen to peaceful music .
			30 Believe you can make a difference .			

this month, invite people in





Upcoming Office Hours

April 3-9, 2025

Thurs. April 3: 2-3pm

Fri. April 4: 9-10am

Monday, April 7: 11:30am-12pm

Tuesday, April 8: 11am-12pm

Wednesday, April 9: 12-1pm

Susan Swearer, Ph.D., LP
Chairperson
Department of Educational Psychology
University of Nebraska-Lincoln



Need to reserve a room?

<https://tinyurl.com/TEACRoomRes>

*Note: please submit your request no later than 48hrs before your reservation!

Questions? Ask Zee!

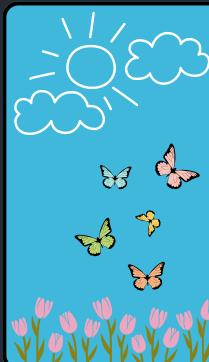


Need to meet w/ Jules?

It's Jules' busiest season! If you would like to meet, please send them an email about what you'd like to talk about and they will send you a calendar invite to meet!

Appointments available in-person and via Zoom

*Note: Jules is unable to meet on Wednesdays



Microsoft Form Link: <https://go.unl.edu/cspcmaterials>

need to request materials from CSPC?



April 9, 2025

VOLUME 150

Weekly Wednesday

Department of Educational Psychology

What's Inside:

- 1) Top Stories**
- 2) Student Events & Support**
- 3) Funding Opportunities**
- 4) The Week Ahead**



CEHS Alumni Masters Week

with Dr. Kisha Radliff



Dr. Kisha Radliff was nominated to represent the College of Education and Human Sciences as the 2025 Alumni Master because of her distinguished research on mental health & social justice. She earned her Ph.D. in School Psychology at UNL, completed her internship in professional psychology at the Children's Hospital of Philadelphia, and is currently a licensed psychologist, Associate Professor, and School Psychology Program Coordinator at The Ohio State University.

Her research contributes to two areas within school psychology: mental health and social justice. Specific to mental health, Dr. Radliff examines aggressive behavior (e.g., bullying, relational aggression) and related factors (e.g., internalizing issues, cognitive or psychosocial constructs, and substance use) that affect students' educational experiences. Her research related to social justice encompasses the following areas: evaluation of the integration of a social justice philosophy into graduate student training and examining the intersection of mental health issues and social justice. Her research is guided by social-ecological theory and a social justice philosophy. Dr. Radliff is on the editorial board of the Journal of School Violence, and she has given hundreds of presentations locally, regionally, and nationally on child and adolescent mental health issues through a social justice lens.

Dr. Radliff will be visiting EDPS on April 10-11th. If you'd like to get involved, please email Jules and Zee for more information!

Student
Outreach &
Support
(SOS)

NOMINATIONS NOW OPEN!

Interested in joining SOS? Want to nominate a friend you think would support the student body of EDPS in a meaningful way? NOMINATIONS ARE NOW OPEN FOR SOS FOR AY 25-26!



You can nominate yourself or a fellow student! Scan the QR code or visit the link below to submit your nominations!

<https://go.unl.edu/sosay2526>

Important Information About Visas & SEVIS Records

UNL is aware of recent news coverage regarding visa revocations and SEVIS terminations involving international students at other U.S. universities. While these reports may raise questions or concerns, UNL want to make sure you have access to reliable information and support resources.

To help answer questions, [this FAQ](#) has been prepared for you including what a visa revocation or SEVIS termination means, what to do if you are affected, and where to go for support—whether you have immigration concerns or just need someone to talk to.

If you have questions or would like to talk through your situation, please connect with the International Student and Scholar Office in any of the following ways:

- Email: isso@unl.edu
- Book an appointment [HERE](#)
- Call: 402.472.0324 or 402.472.5163
- Visit: Global Education Center, Louise Pound Hall, Office 130



SOS & CSPC DE-STRESS EVENT



JOIN US ON FRIDAY, APRIL 11TH IN THE CSPC
FOR AN AFTERNOON OF DE-STRESS EVENTS!



SNACKS!



BOARD GAMES!

THERAPY DOGS!



FRIDAY APRIL 11TH 4-6pm
in the CSPC
(bottom floor of TEAC)

**LIVE
WEBINAR**



It Takes a Village: A Communitarian Approach to Enhancing Ethical Competency

ABCT
ASSOCIATION for
BEHAVIORAL and
COGNITIVE THERAPIES

This interactive workshop will focus on developing strategies for creating a positive ethical culture within your clinical practice. It will utilize a combination of lecture, interactive exercises, and group discussion to facilitate a personalized and deep understanding of the material.



with Dr. Randy Fingerhut

At the end of this workshop, the learner will be able to:

1. Describe the difference between remedial and positive approaches to ethics.
2. Identify principles and standards of the APA ethics code that relate to competency and self-care.
3. Assess the relative benefits of a communitarian versus an individual approach to maximizing ethical competency.
4. Describe the components of the competence constellation model.
5. Design a personalized plan for professional growth in ethical competency that focuses on self-care and developing a professional support network.

\$15 Student ABCT Members

\$25 ABCT Members

\$35 Non-members

1.5 CE Hours

10-11:30am

Friday, April 25th

REGISTER HERE



Summer Tuition Remission



Did you have an assistantship during the previous Academic Year? You likely have summer tuition remission!

Want to know how many credit hours of summer tuition remission you have? **HERE'S HOW TO FIND OUT:**

1. Email Jules a copy of your academic year assistantship contract **Pretty easy, right?**
2. Ask them how many credit hours of tuition remission you have based on your contract!

BE SURE TO INCLUDE A COPY OF YOUR CONTRACT!
Jules will need to look at your contract to tell you an accurate number of summer credits you have.



PAID INTERNSHIP OPPORTUNITY

Family Service Lincoln is looking for Youth Development Interns!

Youth Development serves students, Kind-5th grade and their families in LPS schools via Before & After School programs. Our current interns have majors that include English, Communications, CYFS, Education, Psychology, and even Criminal Justice! Interns get hands on experience in executing lesson plans, behavior modification, speaking to families, and of course having FUN with students in play! In addition, FSL provides paid trainings that includes CPR/First Aid, Child Abuse & Neglect, Classroom Management, and Challenging Behaviors, just to name a few! Interns will also have the opportunity to attend a FSL Board Meetings, sit in on a principal and or parent meetings, and even lead programming to grow in their skills!



click HERE to learn more or apply!

\$10,000 Scholarship Available!

Dream Scholarship from The Sallie Mae Fund and Thurgood Marshall College Fund

Are you a graduate student who is passionate about making a meaningful impact in your community? You could be the next recipient of a \$10,000 Bridging the Dream Scholarship from The Sallie Mae Fund and Thurgood Marshall College Fund!

The application window is open now for graduate students who are U.S. citizens or permanent residents enrolled in an accredited graduate-level program at least half-time. Applicants must submit a video explaining their unique perspective, passion, or curiosity and its impact on their future as a scholar and leader.

The application window is open until April 25, 11:59 p.m. ET



Interested? Visit:

<https://www.salliemae.com/landing/bridging-the-dream-for-graduates/>

GRADUATE ASSISTANTSHIP AVAILABLE



UNL's Gender and Sexuality Center (GSC) is hiring a Marketing Graduate Assistant!

The Marketing Graduate Assistant assists with the daily operation of the Gender and Sexuality Center, which includes working with and helping to supervise student staff; working with the Assistant Director of the Center to help plan, implement, evaluate, and engage the center staff; managing the social media of the center; managing the GSC bi-weekly newsletter; managing marketing and communications; assisting with weekly student staff meetings; assisting with the coordination of programming, including but not limited to the annual drag shows and Lavender Graduation. Additional responsibilities include assisting with other programming as assigned; helping with the day-to-day operations and development of the center, programming, outreach and education; statistics management; and serving as a representative of the center on campus, through committees, outreach, and communication.

click here to apply!



APPLICATIONS CLOSE ON APRIL 16TH



Upcoming Office Hours

April 10-16, 2025

Thurs. April 10: 2:30-3:30pm

Fri. April 11: 2-3pm

Monday, April 14: 1-2pm

Tuesday, April 15: 12:30-1:30pm

Wednesday, April 16: 2:30-3:30pm

Susan Swearer, Ph.D., LP
Chairperson
Department of Educational Psychology
University of Nebraska-Lincoln



Need to reserve a room?

<https://tinyurl.com/TEACRoomRes>

*Note: please submit your request no later than 48hrs before your reservation!

Questions? Ask Zee!

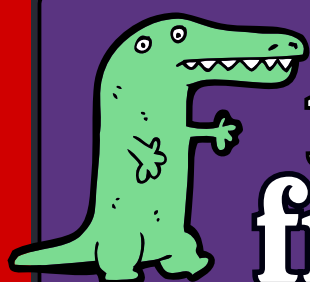


Need to meet w/ Jules?

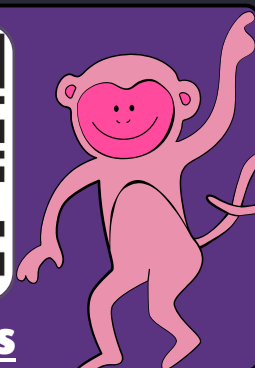
It's Jules' busiest season! If you would like to meet, please send them an email about what you'd like to talk about and they will send you a calendar invite to meet!

Appointments available in-person and via Zoom

*Note: Jules is unable to meet on Wednesdays



need to request
materials
from CSPC?



Microsoft Form Link: <https://go.unl.edu/cspcmaterials>

April 16, 2025

VOLUME 151

Weekly Wednesday

Department of Educational Psychology

What's Inside:

- 1) Top Stories**
- 2) News**
- 3) Happening in EDPS**
- 4) The Week Ahead**



Important Information About Visas & SEVIS Records

UNL is aware of recent news coverage regarding visa revocations and SEVIS terminations involving international students at other U.S. universities. While these reports may raise questions or concerns, UNL want to make sure you have access to reliable information and support resources.

To help answer questions, this FAQ has been prepared for you including what a visa revocation or SEVIS termination means, what to do if you are affected, and where to go for support—whether you have immigration concerns or just need someone to talk to.

If you have questions or would like to talk through your situation, please connect with the International Student and Scholar Office in any of the following ways:

- Email: isso@unl.edu
- Book an appointment [HERE](#)
- Call: 402.472.0324 or 402.472.5163
- Visit: Global Education Center, Louise Pound Hall, Office 130

WE NEED YOUR HELP!

We are currently working on creating a department belonging statement and would greatly appreciate your input! The previous statements are outdated, written in 2020, and we want to co-construct a statement that captures our departmental values.

Please utilize the following Microsoft form to leave your feedback and thoughts on our belonging statement!

<https://forms.office.com/r/kZ4FQgZiL2>



April 18, 17:00 - 20:30
UNL, CPEH, Room 227

From Around the World to Nebraska

"Global Minds, Midwestern Hearts".



SCAN ME

RSVP and Represent Your Culture!



EXPERIENCE 50+ COUNTRIES IN ONE NIGHT!

Learn more about the event at the link below!

<https://events.unl.edu/UNL-FA/2025/04/18/189541/>

POTENTIAL GA POSITION IN NE SCHOOL!

The Nebraska College Preparatory Academy (NCPA) works with first generation, underserved high school students, helping them prepare for college and funding their college education. We have a mental health team that provides mental health services at each of their five schools, including Omaha North.

NCPA is looking to place an intern at Omaha North for the 2025/2026 school year. The intern will obtain 8-15 direct contact hours per week with underserved high school students. NCPA mental health providers utilize a solution-focused brief therapy model, however we also incorporate additional modalities as dictated by the circumstances and client need.

NCPA can provide a state vehicle if the intern prefers for travel. The expectation would be that the intern be at Omaha North a minimum of 2 days a week (or equivalent) to ensure they are getting their hours and meeting student's needs. NCPA provides the required clinical supervision for interns.

FOR MORE INFORMATION:

Email Nanette Gingery:
nanette.gingerylankas@unl.edu

Thursday April 24th
6:00 - 9:00 PM
Kiewit Hall A203

Death Before Dead Week

Murder Mystery Dinner
Food Provided
Murder Guaranteed
Hosted by GSA

RSVP by April 21st



click here to register!

For Graduate Students

**LIVE
WEBINAR**

1.5 CE Hours

\$15 Student ABCT Members
\$25 ABCT Members
\$35 Non-members

It Takes a Village: A Communitarian Approach to Enhancing Ethical Competency

This interactive workshop will focus on developing strategies for creating a positive ethical culture within your clinical practice. It will utilize a combination of lecture, interactive exercises, and group discussion to facilitate a personalized and deep understanding of the material.

At the end of this workshop, the learner will be able to:

1. Describe the difference between remedial and positive approaches to ethics.
2. Identify principles and standards of the APA ethics code that relate to competency and self-care.
3. Assess the relative benefits of a communitarian versus an individual approach to maximizing ethical competency.
4. Describe the components of the competence constellation model.
5. Design a personalized plan for professional growth in ethical competency that focuses on self-care and developing a professional support network.

ABCT ASSOCIATION for
BEHAVIORAL and
COGNITIVE THERAPIES



with Dr. Randy Fingerhut

REGISTER HERE >

Friday, April 25th
10-11:30am

Super Swap

SUMMER STYLE EDITION

a **FREE** event to donate and swap warm-weather clothing, as well as housewares & furniture

YOUR FAVORITE CLOTHING SWAP IS BACK AND BIGGER & BETTER THAN EVER!!!

In an effort to encourage sustainability, build community, and deepen our commitment to helping others, we are hosting a **MEGA SUPER SWAP EVENT** in June! The upcoming Summer Style Edition of the Super Swap will be open to **ALL OF CEHS!!! WOO!!!** This event has its home in EDPS, and will always have its home here. We are thrilled to have the support of CEHS in opening this event to more students, staff, and faculty who want to participate in the fun!

everyone is welcome!

To RSVP, learn more, and view the list of acceptable donations, visit the link below:

<https://go.unl.edu/superswapsummer2025>

EDPS will start taking Super Swap donations on APRIL 28TH!

Questions? Email Jules!!



WINS-day Celebrations

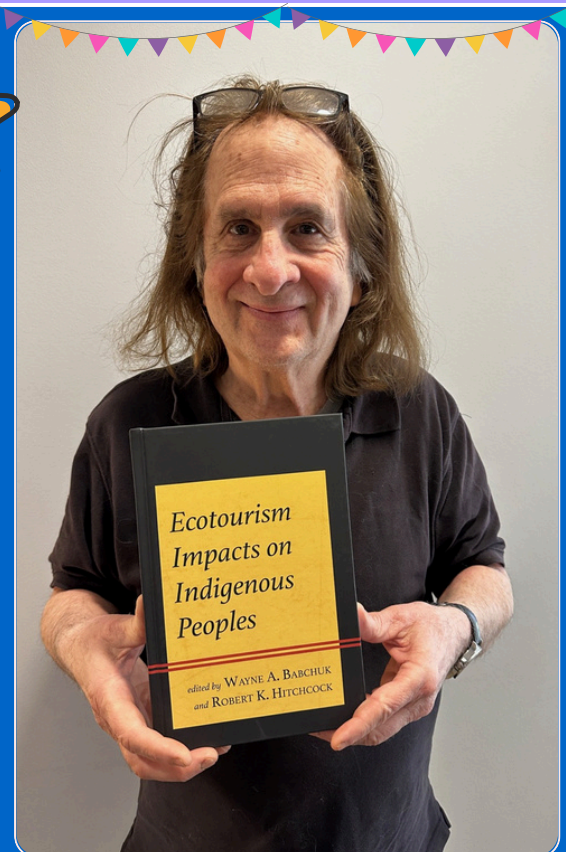
CONGRATULATIONS



ZEE WAS ELECTED TO UNL'S STAFF SENATE!

WOO HOO!!! GO ZEE GO!!!

Jules finally found 3D KN95 masks that fit their face! They've been looking for a mask in this style that fits for AGES! These even have adjustable ear loops! Super comfortable, and they come in a ton of different colors and sizes. Jules can't wait to get more and continue to have fun matching them with outfits!



CONGRATULATIONS TO WAYNE FOR HIS FIRST PUBLISHED TEXT!!!!





Upcoming Office Hours

April 17-23, 2025

Thurs. April 17: 2-3pm

Fri. April 18: 11am-12pm

Monday, April 21: 2-3pm

Tuesday, April 22: 10-11am

Wednesday, April 23: 2-3pm

Susan Swearer, Ph.D., LP
Chairperson
Department of Educational Psychology
University of Nebraska-Lincoln



Need to reserve a room?

<https://tinyurl.com/TEACRoomRes>

*Note: please submit your request no later than 48hrs before your reservation!

Questions? Ask Zee!



Need to meet w/ Jules?

It's Jules' busiest season! If you would like to meet, please send them an email about what you'd like to talk about and they will send you a calendar invite to meet!

Appointments available in-person and via Zoom

*Note: Jules is unable to meet on Wednesdays



need to request materials from CSPC?

Microsoft Form Link: <https://go.unl.edu/cspcmaterials>



scan meeeee



April 23, 2025

VOLUME 152

Weekly Wednesday

Department of Educational Psychology

What's Inside:

- 1) Top Stories**
- 2) Webinars & Workshops**
- 3) EDPS Super Swap**
- 4) Donation Guidelines**
- 5) The Week Ahead**



WE NEED YOUR HELP!



Please utilize the following Microsoft form to leave your feedback and thoughts on our belonging statement!

[CLICK HERE](#)

We are currently working on creating a department belonging statement and would greatly appreciate your input! The previous statements are outdated, written in 2020, and we want to co-construct a statement that captures our departmental values.

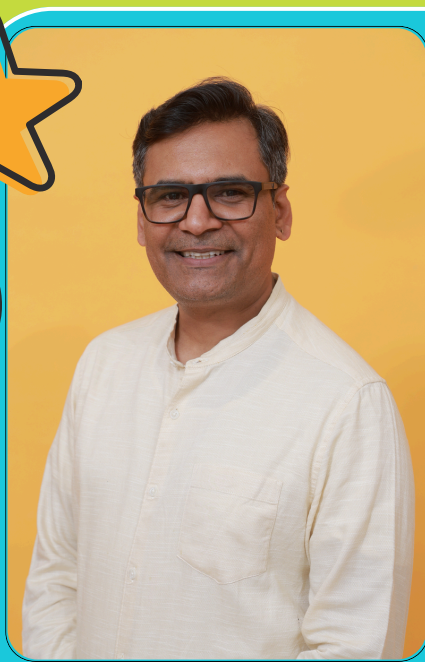
REMINDER!

If you have anything checked out from the DEMAC/SOS library in Jules' office, you must return your book(s) to Jules no later than May 9th.

Have questions? Need an extension on your loan? EMAIL JULES!



Weekly WINS-day



Om Joshi, a PhD student in DLS, was selected for the CEHS Outstanding Graduate Teaching Assistant Award!

Way to go, Om! We are so thankful for all the work you have done in our department as a GTA. Well deserved!

Abigail Volkmer, a first year CoPsych student, ran the Boston Marathon this week! Look at her finishing time!!!
WOOOOOO HOOO!!!!

NEBRASKA RUNNERS IN 2025 BOSTON MARATHON

NAME	TOWN	TIME
Jackie Loenser	Lincoln, NE	03:29:56
Phillip Mizner	Lincoln, NE	03:15:52
Tiffany Murray	Lincoln, NE	03:25:44
Domani Occansey	Lincoln, NE	03:02:57
Helena Occansey	Lincoln, NE	03:30:56
Caitlin Orth	Lincoln, NE	03:09:42
Lindsey Palmer	Lincoln, NE	03:33:11
Megan Trowbridge	Lincoln, NE	05:06:29
Abigail Volkmer	Lincoln, NE	03:19:45



Why Kind Workplaces are More Successful

👏👏👏👏👏👏👏👏👏👏👏👏👏👏👏👏👏👏👏👏👏👏 **a FREE webinar!**

This one-hour event will feature GGSC science director Emiliana Simon-Thomas; CEO Denis Ring, founder of Ocho Chocolates and creator of the Whole Foods 365 brand; and organizational scholars Mei Feng (University of Pittsburgh) and Weili Ge (University of Washington). They will dive into the latest findings on how prosocial leadership and organizational citizenship not only improve employee well-being but also drive profitability and performance. Discover actionable insights and practical tips on how to foster a culture of kindness in your organization and hear real-world stories of how encouraging actions that benefit others can transform workplaces and improve organizational outcomes.

Wednesday, April 30
2-3pm CT

**click here
to register!**



REGISTER NOW



ENGAGING IN ADVOCACY AS A PSYCHOLOGIST



This engaging webinar will focus on advocacy efforts across various psychology fields, interests, and careers. The discussion will emphasize empowerment, knowledge-sharing, and the development of practical advocacy skills within diverse communities. Expert panelists will offer valuable insights, followed by an interactive Q&A session.

APRIL 30TH
@ 11:30AM

**REGISTER
HERE**



Super Swap

SUMMER STYLE EDITION

YOUR FAVORITE CLOTHING SWAP'S FAVORITE CLOTHING SWAP

WHAT IS THE SUPER SWAP?

The EDPS Super Swap was created by Jules and debuted in Fall 2023. This event is a community building activity with the opportunity to share what you don't need or want with others who do! We are eager to help people find necessary items in addition to helping others clear out their closets and homes of items that personally no longer serve their purpose.

The Super Swap is not a charity or donation drive—it is **mutual aid**. We ask that all items donated to the Super Swap are in good working condition and are free of holes, tears, stains, or other signs of heavy wear. This is **not** an event to drop off “whatever you've been meaning to donate”—this is an event and a time to be intentional in your donations, ensuring that what is brought into the event serves a purpose and fills a need. Part of what makes this event fun is that attendees walk out of the event with quality items, not just miscellaneous junk!

HOW DOES IT WORK?

The Super Swap features clothing, furniture, and other household items. Take a look at your closet and see if there are any clothing items you no longer want, need, or use. The Summer Style Edition will focus primarily on summer clothing—no sweaters, coats, or winter boots, please! Items must be clean and free of any holes, tears, or stains. We do not accept used socks or undergarments of any kind (new is great!). Belts, shoes, and accessories are welcome, as long as they are in good condition.

In addition to clothing items, we also accept household items. Small household items, such as kitchen supplies, can be dropped off with Super Swap donations. **For all furniture donations:** please take photos and measurements of each item. Then, send your photos, measurements, and item descriptions to Jules via email. If you would like to charge a fee for your furniture items, please include that information in your email to Jules. They will add everything to a webpage that will be accessible to view at the event! Note: this information must be sent to Jules no later than June 11th to be considered.

**everyone is welcome at the
super swap, even if you
cannot donate to the event!**

JUNE 19-20 | CPEH 227 | 10AM-3PM

**To RSVP or learn more about the
event, visit the link below or scan
the QR code for more information.**

<https://go.unl.edu/superswapsummer2025>

**EDPS will start taking donations
NEXT MONDAY, APRIL 28!**

Questions? Email Jules!!





SUPER SWAP

SUMMER STYLE EDITION 2025

BROUGHT TO YOU BY THE DEPARTMENT OF EDUCATIONAL PSYCHOLOGY

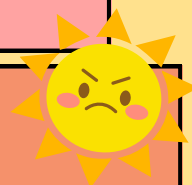


DONATION GUIDELINES



YES!

- T-SHIRTS
 - SHORTS
 - LIGHT JACKETS
 - SUNGLASSES
 - JEANS
 - LINEN
 - PANTS
 - SUNDRESSES
 - SOCKS
 - SNEAKERS & SANDALS
 - BOOKSHELVES
 - CHAIRS
 - COUCHES
 - SIDE TABLES
 - BLANKETS
 - RUGS
- *BELTS, SHOES, AND ACCESSORIES ARE WELCOME, AS LONG AS THEY ARE IN GOOD CONDITION.



NO!

- SWEATERS
- UNDERGARMENTS
- BOOTS
- WINTER HATS
- USED SOCKS
- “WINTER CLOTHES”

TO DONATE FURNITURE

EMAIL JULES (JMEYERS19@UNL.EDU)

PLEASE INCLUDE THE FOLLOWING INFORMATION:

- PHOTOGRAPH(S) OF ITEM
- MEASUREMENTS OF ITEM, SUCH AS HEIGHT, WIDTH, AND LENGTH
- CONTACT INFORMATION FOR PICKUP PURPOSES

PLEASE NOTE: FURNITURE MAY BE SOLD FOR A SMALL FEE. IF YOU WISH TO ATTACH A FEE TO YOUR FURNITURE ITEMS, PLEASE INCLUDE THAT INFORMATION IN YOUR COMMUNICATION.

ALL CLOTHING AND FURNITURE DONATIONS MUST BE FREE OF STAINS, RIPS, AND TEARS.

THIS EVENT IS NOT A CHARITY, NOR AN EXCUSE TO GET RID OF YOUR DONATION PILE. THIS IS A MUTUAL AID EVENT. PLEASE ONLY DONATE ITEMS THAT ARE IN GOOD CONDITION AND HAVE PLENTY OF “LIFE LEFT IN THEM”

If you are unsure whether an item of yours can be donated, please email Jules for clarification.



Upcoming Office Hours

April 24-30, 2025

Thurs. April 24: 3-4pm

Fri. April 25: 12-1pm

Monday, April 28: 1-2pm

Tuesday, April 29: 11am-12pm

Wednesday, April 30: 1-2pm

Susan Swearer, Ph.D., LP
Chairperson
Department of Educational Psychology
University of Nebraska-Lincoln



Need to reserve a room?

<https://tinyurl.com/TEACRoomRes>

*Note: please submit your request no later than 48hrs before your reservation!

Questions? Ask Zee!



Need to meet w/ Jules?

If you would like to meet with Jules, you must send them an email to set up an appointment.

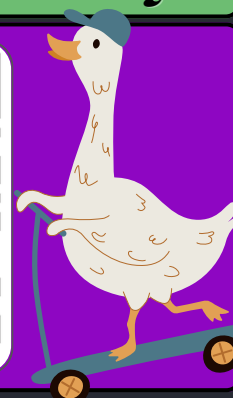
Appointments available in-person and via Zoom

*Note: Jules is unable to meet on Wednesdays



need to request materials from CSPC?

Microsoft Form Link: <https://go.unl.edu/cspcmaterials>



April 30, 2025

VOLUME 153

Weekly Wednesday

Department of Educational Psychology

What's Inside:

- 1) Top Stories**
- 2) Happening in EDPS**
- 3) Webinars & Opportunities**
- 4) The Week Ahead**



Masters Comprehensive Exam

(MA COMPS)

next exam:

JUNE 6th

The deadline to register for the June MA COMPS is **FRIDAY, MAY 30TH at 4pm.**

Please meet with your advisor to discuss which exam(s) you are required to take.

LATE APPLICATIONS WILL NOT BE ACCEPTED.

To register for the MA COMPS, please visit our website to download your registration form: <https://go.unl.edu/edpscomps>

Please send your completed registration to Jules via email. Registration is not completed until all parties have signed your registration form.

All Masters Comprehensive Exams will be offered via Canvas. Students must have Respondus Lockdown Browser on their computers in order to take the exams.

If you do not have a laptop with access to Respondus Lockdown Browser, you may borrow one from HuskerTech for Free.

Please visit the following link to learn how to checkout a laptop from Huskertech:

<https://nusupport.nebraska.edu/TDClient/33/Portal/Requests/ServiceOfferingDet?ID=19>

PLEASE NOTE:

If you require testing accommodations, you must have accommodations on file with SSD and submit your accommodation paperwork at the same time you submit your COMPS registration form.

Super Swap

SUMMER STYLE EDITION

EDPS has started collecting donations!!! You can drop off your donations in TEAC 114 at any time. Please be sure to look at the donation guidelines to see what is eligible to donate! If you are unsure whether or not your item can be donated, please email Jules and they will assist you!

everyone is welcome at the super swap, even if you cannot donate to the event!

To RSVP or learn more about the event, visit the link below or scan the QR code for more information.

<https://go.unl.edu/superswapsummer2025>



JUNE 19-20 | CPEH 227 | 10AM-3PM

REMINDER!

If you have anything checked out from the DEMAC/SOS library in Jules' office, you must return your book(s) to Jules no later than May 9th.

Have questions? Need an extension on your loan? EMAIL JULES!



Weekly WINS-day

Woohoo!



CONGRATULATIONS to Dania Javaid, who won the Best Leadership Award! Additionally, UNL's Fulbright Association received an award of outstanding association.

YAY!



AY 25-26 SASP BOARD

HOORAY! Our new SASP board has been selected!

- **President:** Mya Jones
- **Vice President:** Johanna Galles
- **Treasurer:** VOLUNTEER?
- **Social Coordinator:** Annie Wrobel
- **NSPA:** Megan Schneider
- **APAGS:** Amanda Barrett
- **Student Outreach Chair:** Taylyn Petsche
- **Communications/Wellness Coordinator:** Maddy Berube
- **EdS Rep:** Jenna Baum
- **PhD Rep:** Melanie Willis



PAID INTERNSHIP OPPORTUNITY

The Nebraska College Preparatory Academy (NCPA) works with first generation, underserved high school students, helping them prepare for college and funding their college education. We have a mental health team that provides mental health services at each of their five schools, including Omaha North.

NCPA is looking to place an intern at Omaha North for the 2025/2026 school year. The intern will obtain 8-15 direct contact hours per week with underserved high school students. NCPA mental health providers utilize a solution-focused brief therapy model, however we also incorporate additional modalities as dictated by the circumstances and client need.

NCPA can provide a state vehicle if the intern prefers for travel. The expectation would be that the intern be at Omaha North a minimum of 2 days a week (or equivalent) to ensure they are getting their hours and meeting student's needs. NCPA provides the required clinical supervision for interns.



FOR MORE INFORMATION:

Email Nanette Gingery:
nanette.gingerylankas@unl.edu

ASDD VIRTUAL SEMINAR SERIES IN A DIFFERENT KEY: GOOD LESSONS FROM AUTISM'S FIRST CHILD



John Donovan



Amy Gravino



Caren Zucker

John Donovan and Caren Zucker will share their friendship with Donald Triplett, the first child diagnosed with autism, and discuss the importance of community acceptance for autistic people. Amy Gravino will share her expertise as an autistic advocate and expert on bullying, sexuality, and autism in females, as featured in John & Caren's film: *In A Different Key* (and online Toolkit)

**CLICK HERE TO
REGISTER**

REGISTER HERE



FRIDAY, MAY 9TH / 11am-12pm central



Upcoming Office Hours

May 1-7, 2025

Thurs. May 1: 2-3pm

Fri. May 2: 1-2pm

Monday, May 5: 2-3pm

Tuesday, May 6: 12:30-1:30pm

Wednesday, May 7: N/A

At a research conference!

Susan Swearer, Ph.D., LP
Chairperson
Department of Educational Psychology
University of Nebraska-Lincoln

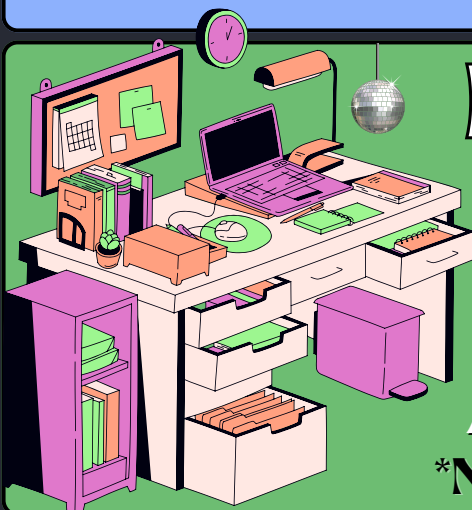


Need to reserve a room?

<https://tinyurl.com/TEACRoomRes>

*Note: please submit your request no later than 48hrs before your reservation!

Questions? Ask Zee!



Need to meet w/ Jules?

If you would like to meet with Jules, you must send them an email to set up an appointment.

Appointments available in-person and via Zoom

*Note: Jules is unable to meet on Wednesdays



need to request
materials
from CSPC?

Microsoft Form Link: <https://go.unl.edu/cspcmaterials>



scan
meeeee

