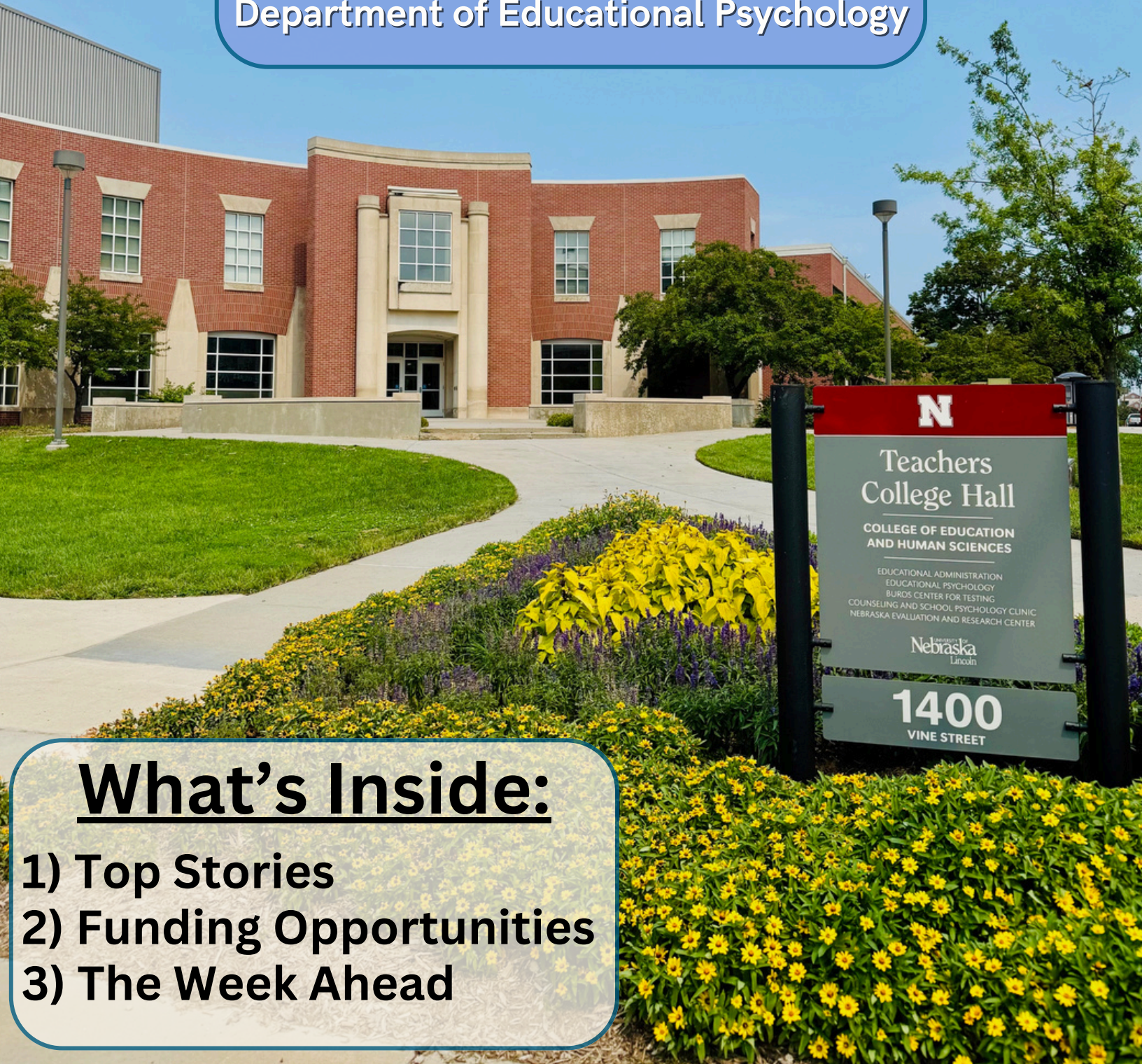


Weekly Wednesday

Department of Educational Psychology



What's Inside:

- 1) Top Stories
- 2) Funding Opportunities
- 3) The Week Ahead

The Society of Counseling Psychology Presents...



Ethical Use of Social Media for Psychologists: Risk Management, Boundaries, and Professional Identity

This webinar examines the ethical use of social media by psychologists, integrating APA Ethics Code standards with empirical research on digital communication, professional boundaries, and risk management.



Dr. Kiki Fehling will review best practices for maintaining confidentiality, responding to client interactions, managing online identity, addressing misinformation, and engaging in advocacy and DEI-focus public education while minimizing legal and licensure risk.

Participants will leave with concrete, evidence-informed strategies to strengthen ethical decision-making online, enhance the quality and equity of services provided to the public, and contribute responsibly to the evolving digital presence of the psychology profession.

FREE WEBINAR!

Earn 1 free Psychology CE Credit!

REGISTER HERE



Kiki Fehling, PhD



Featuring Dr. Kiki Fehling

April 14th, 2026 | 11am-12pm Central | Via Zoom

EDPS GA EVALUATIONS DUE SOON!

DO NOT DELAY MEETING WITH YOUR SUPERVISOR



The **ABSOLUTE LATEST** date to submit your Spring 2026 evaluation is **May 6th**. **FAILURE TO SUBMIT YOUR EVALUATION BY THE DEADLINE WILL IMPACT YOUR ABILITY TO RECEIVE FUTURE FUNDING THROUGH THE DEPARTMENT.**

Find the evaluation form at the following link:
<https://cehs.unl.edu/edpsych/current-student-support/>

Questions? Email [Jules jmeyers19@unl.edu](mailto:jmeyers19@unl.edu)

CEHS STUDENT PROFESSIONAL DEVELOPMENT GRANT PROGRAM APPLICATIONS DUE APRIL 15TH!

The CEHS Student Professional Development Grant Program aims to promote the scholarly and professional development of CEHS students. Grants awarded through this program provide funds for CEHS students to participate in a professional meeting, conference, or other professional development experience. Examples of a professional meeting or conference may include attending or presenting a research paper at the annual meeting for the American Educational Research Association. Professional meetings, conferences, or development experiences are conceived broadly as experiences that support scholarly and professional development. Please read the RFA carefully, as some details may change across funding cycles.

MORE INFORMATION, AS WELL AS THE APPLICATION, CAN BE FOUND ON THE CEHS WEBSITE

Top Stories

THE GSC IS HIRING A GRADUATE ASSISTANT!
UNL's Gender and Sexuality Center (GSC) is hiring a Marketing Graduate Assistant for AY 26-27!

APPLICATIONS CLOSE APRIL 13TH!

APPLY AT THE LINK BELOW:

<https://unl.joinhandshake.com/stu/jobs/10891207>

Curious about on-campus jobs?

UNL HANDSHAKE is available for free to all UNL students! Many job opportunities are posted to Handshake. Be sure to create your account if you haven't already!

<https://careers.unl.edu/welcome-handshake-unl/>

LOOKING FOR RESEARCH FUNDING?

UNL's Office of Research and Innovation (ORI) has a number of research funding opportunities available. Check out the ORI website for a full list of funding opportunities, as well as the deadline to apply for each!

<https://research.unl.edu/fundingopps/>

DEBORAH CROCKETT SCHOLARSHIP PROGRAM FOR SCHOOL PSYCHOLOGY STUDENTS

The Deborah Crockett Scholarship Program supports graduate students pursuing careers in school psychology who may face barriers to entering or advancing in the field. The program reflects NASP's commitment to strengthening the profession by supporting students who bring a range of experiences, perspectives, and goals to their work.

Selected scholars receive a \$5,000 award, along with professional recognition and support, including acknowledgment at the NASP Annual Convention.

APPLICATIONS DUE APRIL 30TH BY 11:59PM ET

VISIT THE LINK BELOW TO LEARN MORE & APPLY!
<https://go.unl.edu/dcsp>

The Week Ahead



Upcoming Office Hours

April 2-8, 2026

Thurs. April 2: 2-3pm

Fri. April 3: 1-2pm (Zoom)

Mon. April 6: 1-2pm

Tues. April 7: 10-11am

Wed. April 8: 2-3pm (Zoom)

Susan Swearer, Ph.D., LP
Chairperson
Department of Educational Psychology
University of Nebraska-Lincoln



NEED TO MEET W/ JULES?

If you would like to meet with Jules, please send them an email to set up an appointment.

APPOINTMENTS AVAILABLE IN-PERSON AND VIA ZOOM

EMAIL JULES
JMEYERS19@UNL.EDU

Want to reserve a room?

Email Zee!

Please include the following information with your request:

- Date of event
- Start & end time
- Number of participants
- Technical needs
- Event title

*Note: please submit your request no later than 24hrs before your reservation!



need to request materials from CSPGC?



Microsoft Form Link: <https://go.unl.edu/cspcmaterials>

Weekly Wednesday

Department of Educational Psychology

What's Inside:

- 1) Top Stories
- 2) News
- 3) Weekly WINS-day
- 4) The Week Ahead



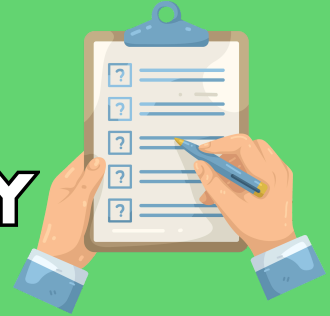
GA EVALUATIONS DUE IN ONE WEEK

LAST DAY TO SUBMIT:

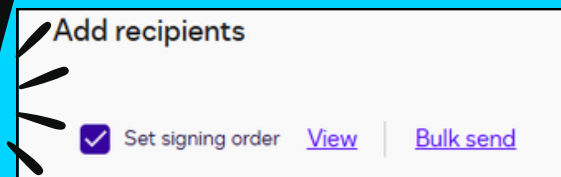
MAY 6TH at 4pm

ROUTING ORDER FOR SIGNATURES:
You → Your supervisor → Your advisor →
the Department Chair (Sue Swearer)
once complete: email to Jules

Failure to complete and submit
your evaluation by the deadline
above **WILL IMPACT YOUR ABILITY
TO RECEIVE FUTURE FUNDING.**



[HTTPS://CEHS.UNL.EDU/EDPSYCH/CURRENT-STUDENT-SUPPORT/](https://cehs.unl.edu/edpsych/current-student-support/)



Be sure to set your "signing order"
prior to routing! Sue cannot sign your
forms until your supervisor and
advisor have signed your evaluation.

IMPORTANT



Having trouble routing things through DocuSign?
Don't forget, you must request a Sender's
License before you are able to send Documents.
Request a sender's license at the link below:

REQUEST A DOCUSIGN SENDERS LICENCE HERE

Master's Comprehensive Exam



(MA COMPS)

Next Exam:

June 5, 2026

The deadline to register for the March
COMPS is **FRIDAY, May 29th at 4pm.**

LATE APPLICATIONS WILL NOT BE ACCEPTED. If you fail to register by 4pm on the established deadline, you will have to wait until October 2026 to take the MA COMPS.

To register for the MA COMPS, please visit
our website to download your registration
form: <https://go.unl.edu/edpscomps>
Please send your completed registration
form to Jules via email. Registration is not
complete until all parties have signed your
registration form.



If you require testing accommodations, you must have
accommodations on file with SSD and submit your
accommodation paperwork at the same time you
submit your COMPS registration form. Please do not
send your documents separately, and **DO NOT DELAY**
meeting with SSD if you need accommodations. Failure
to plan ahead will impact your registration.



2026 NeMTSS Summit

DESTINATION... IMPACT!

Turning MTSS Systems Into
Literacy-Driven Student Outcomes



CALL FOR PROPOSALS!

Individuals and groups may submit proposals for breakout sessions. We are currently looking for proposals for 60-minute presentations that align with the summit's focus and are of interest to Nebraska educators. The **NeMTSS Framework** may also be referenced to help tailor your proposed presentation to the audience.

For more information please visit
[2026 Nebraska MTSS Summit - NeMTSS Framework | Nebraska Department of Education](#)

The theme of this year's Nebraska MTSS Summit is "Destination... Impact! Turning MTSS Systems Into Literacy-Driven Student Outcomes." It centers on leveraging MTSS to drive meaningful improvements in student literacy outcomes. The summit will feature outcome-focused sessions that highlight evidence-based practices shown to strengthen student learning. Designed to build on and extend the work educators have already begun through NeMTSS workshops and implementation support, the summit will help teams deepen, refine and amplify their impact for each learner.

HEALTH EQUITY GRAND ROUNDS

"SYSTEMIC RACISM AND THE THREE M'S OF RACIAL INEQUALITY: IMPLICATIONS FOR HEALTH DISPARITIES"

Increased attention has been given to structural racism as a central mechanism perpetuating health disparities in the United States. Dr. Williams builds on this emerging research by proposing a new conceptual model for studying Black-White inequality: The Three M's (The Making, Manifestation, and Maintenance) of Racial Inequality.

In this talk, Dr. Williams will focus on the four mechanisms that function as the metaphorical lubricant that ensures the gears spin perpetually.

APRIL 30, 2026
12-1:30PM CT



[REGISTER
HERE](#)



WITH **DETRIC WILLIAMS, PHD**
THIS EVENT IS FREE AND OPEN TO THE PUBLIC.
REGISTRATION IS REQUIRED TO RECEIVE THE ZOOM LINK.

News



WINTER CLOTHING DONATIONS

Cleaning out your closet & putting away your winter clothes? OGS is collecting new/gently used winter clothes for graduate students in need. These clothes will be provided during the Big Red Bundle Up event next year.

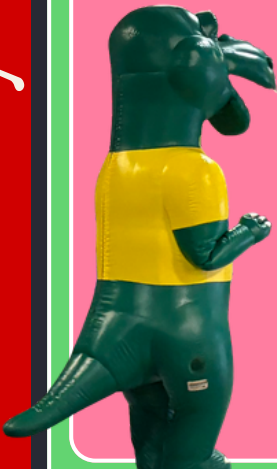
Winter coats, jackets, sweaters, sweatshirts, scarves, winter hats, and gloves all accepted!

DONATIONS CAN BE DROPPED OFF AT THE FRONT DESK OF SEATON HALL UNTIL MAY 15TH

The CSPC & KARL attended the 2026 Autism Run last weekend!! So many families and kids stopped by to hear about the wonderful work we're doing within the CSPC and EDPS.



Thank you to Sungeun for these wonderful photos!



Runza Rex says that KARL looks FABULOUS in their new lab tshirts!



Disco Mornings

Jules is excited because it's officially DISCO MORNING SEASON!!!

For about 4-6 weeks in mid spring & early summer, the sun comes up and reflects off of a window in CPEH

just right and gives Jules what they call "Disco Mornings."

It's their favorite!

NO JOY IS TOO SMALL TO CELEBRATE!!



The Week Ahead



Upcoming Office Hours

April 30-May 6, 2026

Thurs. April 30: 2-3pm

Fri. May 1: 9-10am (via Zoom)

Mon. May 4: 4-5pm

Tues. May 5: 2-3pm

Wed. May 6: 8-9am (via Zoom)

Susan Swearer, Ph.D., LP
Chairperson
Department of Educational Psychology
University of Nebraska-Lincoln



NEED TO MEET W/ JULES?

If you would like to meet with Jules, please send them an email to set up an appointment :)

APPOINTMENTS AVAILABLE IN-PERSON AND VIA ZOOM

EMAIL JULES
JMEYERS19@UNL.EDU

Want to reserve a room?

Email Zee!

Please include the following information with your request:

- Date of event
- Start & end time
- Number of participants
- Technical needs
- Event title

*Note: please submit your request no later than 24hrs before your reservation!



need to request materials from CSPC?



Microsoft Form Link: <https://go.unl.edu/cspcmaterials>

Weekly Wednesday

Department of Educational Psychology

What's Inside:

- 1) Top Stories
- 2) Upcoming Events
- 3) Funding & Learning Opportunities
- 4) Your Book Recommendations
- 5) The Week Ahead



Presenting a poster of your research at an upcoming conference?

Did you know you can apply for departmental funds to cover the cost of printing your poster at the Pixel Lab?

Students who are first author on a poster presentation at a research conference may be eligible to have a STANDARD-SIZED poster printed at the Pixel Lab at the department's expense. **You must first submit a request for approval to Jules and Dr. Swearer prior to submitting a request to the Pixel Lab.**

To request EDPS funding to print your poster at the Pixel Lab, you must first email Dr. Swearer and Jules. Please include "Poster Printing Request" in the subject line of your email. Email requests must be sent no less than 10 days prior to your intended "print by" date for your poster. You must attach a **PDF copy** of your poster for approval, as well as provide the reason you are requesting EDPS funds to cover printing costs. If approved, please work with Jules, who will provide you with information on how to submit your poster for printing. **You must submit your poster to the Pixel Lab with a minimum of 5 days prior to your "print by" date.**


For full details, visit the following link:

<https://cehs.unl.edu/edpsych/current-student-support/edps-travel-research-dissertation-funding-application/>

Please be sure to submit your poster design to the Pixel Lab as a PDF. Be aware of the Pixel Lab's guidelines established on their website for all project submissions. Website: <https://cehs.unl.edu/cehs/pixel-lab/>



EDPS GA EVALUATIONS **DON'T FORGET!** LAST DAY TO SUBMIT: **MAY 6TH at 4pm**


DO NOT wait until the last minute to submit your semesterly evaluation! Failure to complete and submit your evaluation by the deadline above WILL IMPACT YOUR ABILITY TO RECEIVE FUTURE FUNDING. 

ROUTING ORDER FOR SIGNATURES:
You → Your supervisor → Your advisor → the Department Chair (Sue Swearer)
once complete: email to Jules



Full details & the evaluation form are available at the link below:

[HTTPS://CEHS.UNL.EDU/EDPSYCH/CURRENT-STUDENT-SUPPORT/](https://cehs.unl.edu/edpsych/current-student-support/) 

Did you find an assistantship outside of EDPS for next year? PLEASE SEND JULES A COPY OF YOUR SIGNED CONTRACT! 

Thank you!



2025–26 Buffett Institute Graduate Scholars Showcase

The Buffett Early Childhood Institute invites you to meet the next generation of researchers at the 2025–26 Buffett Institute Graduate Scholars Showcase.

Ali Shull, a current DLS PhD student, was one of the 2025-2026 Buffett Graduate Scholars!



Wednesday, April 29
4:30-6pm
Davis Global Center

Please RSVP by
Monday, April 20th!

The event will feature brief presentations and a Q&A poster session with University of Nebraska doctoral students. Their projects explore how maternal stressors can impact babies' short- and long-term health, health outcomes related to diabetes during pregnancy, and parenting content on social media platforms like TikTok and Instagram.

RSVP: https://gobuffettinstitute.nebraska.edu/graduate_scholars_2025-26

Upcoming Events

SPRING INTO ART: APRIL AT THE SHELDON

TAROT AND THE ART OF CHANCE: A WORKSHOP

Intersections of Identity and its exploration of community and ritual, artist Toan Vuong leads a workshop offering practical guidance in reading tarot cards and considering how images acquire meaning through an artist's perspective. Participants will study the composition and symbolism of the traditional Rider-Waite-Smith deck, its historical development, and its connections to broader visual-art traditions



APRIL 25TH
2-4PM

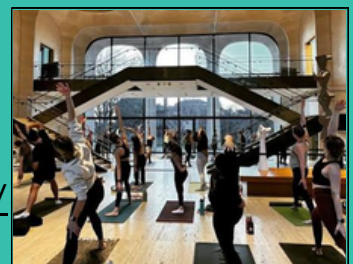
**REGISTER FOR THE
TAROT WORKSHOP HERE**

YOGA IN SHELDON'S GREAT HALL

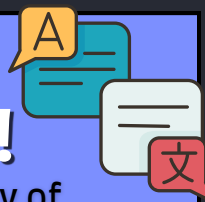
The University of Nebraska-Lincoln's Campus Recreation area is partnering with Sheldon to offer hour-long yoga classes appropriate for all levels. The class is free and open to everyone, but space is limited. Please bring your own mat, towel, or blanket. Registration opens one week prior to class.

APRIL 26TH AT 10:30AM

Register through
the Active
Husker App or
online at
[https://go.unl.edu/
sheldon-yoga](https://go.unl.edu/sheldon-yoga).



Paid Translation & Interpretation Opportunities for Graduate Students!



The Nebraska Translators and Interpreters Corps (NETIC) at the University of Nebraska–Lincoln is seeking bilingual graduate students to provide translation and interpretation services across healthcare, legal, nonprofit, and academic settings. Work is freelance-style and complies with university employment policies. Selected applicants complete a brief assessment and receive training in best practices.

- \$20/hour
- Flexible, project-based work
- Hands-on experience and mentorship

Interested? Contact
Yoanna Esquivel
Greenwood at
unl.netic@nebraska.edu



Who should apply?

Graduate students with strong English and other language skills (especially Arabic, Vietnamese, or Korean) who can accurately convey meaning across cultures.

THE GSC IS HIRING A GRADUATE ASSISTANT!
UNL's Gender and Sexuality Center ✨
(GSC) is hiring a Marketing Graduate Assistant for AY 26-27!

APPLICATIONS CLOSE APRIL 13TH!

APPLY AT THE LINK BELOW:

<https://unl.joinhandshake.com/stu/jobs/10891207>

Understanding Health Insurance as a Graduate Student



Not sure how health insurance works as a graduate student? Join this Red Talk to learn about coverage options, common insurance questions, and resources available to help you navigate your health care with confidence.

April 21, 2026
12-1pm Via Zoom

Registration Required!
CLICK HERE TO REGISTER

Learn more at the link below:
<https://graduate.unl.edu/graduate-support/redtalks/>



DID YOU KNOW?

There is a whiteboard in TEAC 114 where Jules occasionally writes prompts for your contemplation. Jules recently asked y'all to share book recommendations, and the board is **FILLED!** Here's what books come recommended from your colleagues:

- **Woman World** by Aminder Dhaliwal
- **Woodworking** by Emily St. James
- **Discipline** by Larissa Pham
- **It Lasts Forever and Then It's Over** by Anne de Marcken
- **Hijab Butch Blues** by Lamya H.
- **Babel** by R.F. Kuang
- **The Night Eaters** by Majorie M. Liu
- **The Dictionary of Obscure Sorrows** by John Koenig
- **The Poisonwood Bible** by Barbara Kingsolver
- **The Lion Women of Tehran** by Marjan Kamali
- **Rising out of Hatred** by Eli Saslow
- **An Immense World** by Ed Young
- **Monstrilio** by Gerardo Sámano Córdova
- **A Walk in the Park** by Kevin Fedarko
- **Razorblade Tears** by S.A. Cosby



The Week Ahead



Upcoming Office Hours

April 9-15, 2026

Thurs. April 9: 3-4pm

Fri. April 10: 11am-12pm

Mon. April 13: 1-2pm

Tues. April 14: 2-3pm

Wed. April 15: 1-2pm

Susan Swearer, Ph.D., LP
Chairperson
Department of Educational Psychology
University of Nebraska-Lincoln



NEED TO MEET W/ JULES?

If you would like to meet with Jules, please send them an email to set up an appointment.

APPOINTMENTS AVAILABLE IN-PERSON AND VIA ZOOM

EMAIL JULES
JMEYERS19@UNL.EDU

Want to reserve a room?

Email Zee!

Please include the following information with your request:

- Date of event
- Start & end time
- Number of participants
- Technical needs
- Event title

*Note: please submit your request no later than 24hrs before your reservation!



need to request materials from CSPC?



Microsoft Form Link: <https://go.unl.edu/cspcmaterials>

Weekly Wednesday

Department of Educational Psychology

What's Inside:

- 1) Top Stories
- 2) News
- 3) Upcoming Events
- 4) The Week Ahead





Need to take EDPS 870?

It will be offered this summer!

If you need a permission code to register, please request via CARS on our website.

<https://cehs.unl.edu/edpsych/current-student-support/course-access-request-system-cars/>

Understanding Health Insurance as a Graduate Student

Not sure how health insurance works as a graduate student? Join this Red Talk to learn about coverage options, common insurance questions, and resources available to help you navigate your health care with confidence.



April 21, 2026
12-1pm Via Zoom

Registration Required!
CLICK HERE TO REGISTER

Learn more at the link below:

<https://graduate.unl.edu/graduate-support/redtalks/>

EDPS GA EVALUATIONS

DEADLINE: MAY 6TH at 4pm ★★★★★

do not delay meeting with your supervisor!!!

[HTTPS://CEHS.UNL.EDU/EDPSYCH/CURRENT-STUDENT-SUPPORT/](https://cehs.unl.edu/edpsych/current-student-support/)

ROUTING ORDER FOR SIGNATURES:
You → Your supervisor → Your advisor → the Department Chair (Sue Swearer)
once complete: email to Jules

Did you find an assistantship outside of EDPS for next year?

PLEASE SEND JULES A COPY OF YOUR SIGNED CONTRACT!



EDPS IN THE NEWS!

Davianna Daydreamer, Jace Meunier, and Dr. Mun Yuk Chin are researching financial stress as a key challenge for Nebraska mental health practitioners.

Mun Yuk Chin, assistant professor of counseling psychology and a CYFS research affiliate, recently explored how those stressors, especially personal finances, impact practitioners' work satisfaction and personal mental health.

Read the full story at the link below!

<https://cehs.unl.edu/news/research-uncovers-financial-stress-key-challenge-nebraska-mental-health-practitioners/>



RESEARCH PARTICIPANTS NEEDED!

Navigating Bullying and Belonging: How Does Racial Identity Influence the Experiences of Black Youth?

What's Involved?

- An online survey
- Virtual focus group discussion
- Amazon gift card raffle entry for participation in focus group

Eligibility Requirements:

- Identify as Black/African American or Biracial/Multiracial with Black ancestry
- 18-30 years old
- Experienced bullying targeting your race, gender, sexuality, religion, or other personal characteristic
- Attended middle and high school in the United States

To participate, visit:
https://go.unl.edu/radliff_research

Questions? Contact Dr. Radliff at Radliff.2@osu.edu





FEEL LIKE YOU NEED TO SCREAM?

UNL'S LOVE LIBRARY HAS YOU COVERED!

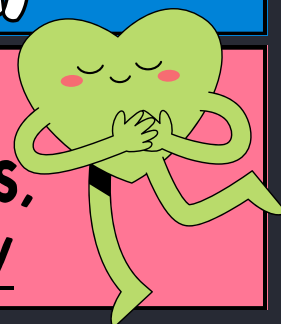


As a finale to Love Library's LoveFest, the Dean of the Libraries will lead campus personnel through a coordinated, cathartic release of academic stress by streaming as loud as we can.

If the neighbors ask, tell them it's "acoustical engineering research."

**FRI. APRIL 17TH LOVE LIBRARY SOUTH LAWN
11AM-2PM (PRIMAL SCREAM AT 2PM)**

LOVE LIBRARY LOVEFEST CONTINUES THROUGH THE END OF THIS WEEK! FOR A FULL SCHEDULE OF EVENTS, VISIT: [HTTPS://LIBRARIES.UNL.EDU/LOVEFEST-2026/](https://libraries.unl.edu/lovefest-2026/)



2025-26 Buffett Institute Graduate Scholars Showcase

The Buffett Early Childhood Institute invites you to meet the next generation of researchers at the 2025-26 Buffett Institute Graduate Scholars Showcase.

Ali Shull, a current DLS PhD student, was one of the 2025-2026 Buffett Graduate Scholars!



**Wednesday, April 29
4:30-6pm
Davis Global Center**

Please RSVP by **Monday, April 20th!**

The event will feature brief presentations and a Q&A poster session with University of Nebraska doctoral students. Their projects explore how maternal stressors can impact babies' short- and long-term health, health outcomes related to diabetes during pregnancy, and parenting content on social media platforms like TikTok and Instagram.

RSVP: https://gobuffettinstitute.nebraska.edu/graduate_scholars_2025-26

UPcoming Events

The Week Ahead



Upcoming Office Hours

April 16-22, 2026

Thurs. April 16: 10-11am

Fri. April 17: No Office Hours

Mon. April 20: 1-2pm

Tues. April 21: 10-11am

Wed. April 22: 10-11am (Via Zoom)

Susan Swearer, Ph.D., LP
Chairperson
Department of Educational Psychology
University of Nebraska-Lincoln



NEED TO MEET W/ JULES?

If you would like to meet with Jules, please send them an email to set up an appointment.

APPOINTMENTS AVAILABLE IN-PERSON AND VIA ZOOM

EMAIL JULES
JMEYERS19@UNL.EDU

Want to reserve a room?

Email Zee!

Please include the following information with your request:

- Date of event
- Start & end time
- Number of participants
- Technical needs
- Event title

*Note: please submit your request no later than 24hrs before your reservation!



need to request materials from CSPCG?



Microsoft Form Link: <https://go.unl.edu/cspcmaterials>



Weekly Wednesday

Department of Educational Psychology

What's Inside:

- 1) Top Stories
- 2) News
- 3) The Week Ahead





EDPS GA EVALUATIONS



DON'T FORGET!

LAST DAY TO SUBMIT: MAY 6TH at 4pm

DO NOT wait until the last minute to submit your semesterly evaluation! Failure to complete and submit your evaluation by the deadline above WILL IMPACT YOUR ABILITY TO RECEIVE FUTURE FUNDING.



ROUTING ORDER FOR SIGNATURES:
You → Your supervisor → Your advisor → the Department Chair (Sue Swearer)
once complete: email to Jules



Full details & the evaluation form are available at the link below:

[HTTPS://CEHS.UNL.EDU/EDPSYCH/CURRENT-STUDENT-SUPPORT/](https://cehs.unl.edu/edpsych/current-student-support/)



Need to route something in DocuSign?



Don't forget to request your DocuSign senders license! You will not be able to route documents in DocuSign without one.

These licenses are free to all UNL staff, faculty, and students. Utilize the hyperlink below to request your sender's license!

REQUEST A DOCUSIGN SENDERS LICENCE HERE

Need to take EDPS 870?

It will be offered this summer!

If you need a permission code to register, please request via CARS on our website.



<https://cehs.unl.edu/edpsych/current-student-support/course-access-request-system-cars/>

Top Stories



Campus Closed for events at Memorial Stadium

Concerts and other large events are being held at Memorial Stadium. This will result in City Campus buildings being locked down, just like they would be for a football game. Buildings will be locked (no access) and parking permits will be invalid during these events. Please see the list below of upcoming events at Memorial Stadium:



- **April 25:**
 - Zach Bryan Concert
- **May 3:**
 - Lincoln Marathon
- **June 13:**
 - Savannah Bananas vs. Firefighters
- **August 22**
 - The Boys from Oklahoma

Chancellor's Graduate Research Grant (CGRG)

This grant program supports graduate students by expanding access to research and professional opportunities, advancing progress toward degree completion, fostering professional development, and increasing the visibility of UNL through scholarly engagement and research dissemination.



APPLICATION

DEADLINE: APRIL 27TH

[ACCESS THE APPLICATION HERE!](#)

Paid Translation & Interpretation Opportunities for Graduate Students!

The Nebraska Translators and Interpreters Corps (NETIC) at the University of Nebraska–Lincoln is seeking bilingual graduate students to provide translation and interpretation services across healthcare, legal, nonprofit, and academic settings. Work is freelance-style and complies with university employment policies. Selected applicants complete a brief assessment and receive training in best practices.

- \$20/hour
- Flexible, project-based work
- Hands-on experience and mentorship

Interested? Contact Yoanna Esquivel Greenwood at unl.netic@nebraska.edu



Who should apply?

Graduate students with strong English and other language skills (especially Arabic, Vietnamese, or Korean) who can accurately convey meaning across cultures.



The Week Ahead



Upcoming Office Hours

April 23-29, 2026

Thurs. April 23: 4-5pm (Via Zoom)

Fri. April 24: 11:30am-12:30pm

Mon. April 27: 10:30-11:30am

Tues. April 28: 12:30-1:30pm

Wed. April 29: 1-2pm

Susan Swearer, Ph.D., LP
Chairperson
Department of Educational Psychology
University of Nebraska-Lincoln



NEED TO MEET W/ JULES?

If you would like to meet with Jules, please send them an email to set up an appointment.

APPOINTMENTS AVAILABLE IN-PERSON AND VIA ZOOM

EMAIL JULES
JMEYERS19@UNL.EDU

Want to reserve a room?

Email Zee!

Please include the following information with your request:

- Date of event
- Start & end time
- Number of participants
- Technical needs
- Event title

*Note: please submit your request no later than 24hrs before your reservation!



need to request materials from CSPC?



Microsoft Form Link: <https://go.unl.edu/cspcmaterials>