

# Weekly Wednesday

Department of Educational Psychology

## What's Inside:

- 1) Top Stories
- 2) Orientation Schedule
- 3) Reminders & Information
- 4) Happening in EDPS
- 5) Happening Around Campus
- 6) The Week Ahead



# Welcome Back!



It has been great seeing so many of you back on campus this week! The start of the semester is just around the corner! I hope you can find some time in the next few days to get in some good rest, relaxation, play, and fun. We can't wait to see folks at orientation this Friday and welcome everyone back to classes on Monday.



## RETURNING STUDENTS!! WE NEED YOUR HELP!

WANT TO LEND  
A HELPING  
HAND? PLEASE  
EMAIL JULES  
& ZEE!

THANK YOU!

WE ARE LOOKING FOR A FEW RETURNING STUDENTS  
TO HELP US WITH ORIENTATION-DAY ACTIVITIES.

### HERE'S WHERE WE NEED HELP:

8:15AM: CHECK-IN HELP OUTSIDE OF TEAC 105

11:30AM: HELP SETTING UP LUNCH IN CPEH 227

CHECK-IN HELP WILL ASSIST ALL STUDENTS WITH THE CHECK-  
IN PROCESS AT ORIENTATION, INCLUDING DISTRIBUTING GIFT  
BAGS AND HELPING FOLKS GET THEIR NAMETAGS.

## STUDENTS!

Are you registered for your  
full course load for Fall 2025?



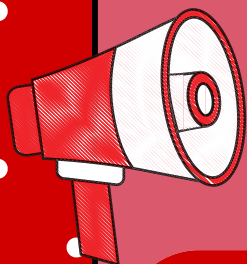
If you have yet to register for fall classes, please do so ASAP!

Remember to work with your advisor to plan your program of studies!

**LATE REGISTRATION BEGINS MONDAY, AUGUST  
25TH. LATE REGISTRATION HAS A FEE OF \$100.**

REMINDER: If you need a permission code in order to enroll in the course, please request your permission code through our Course Access Request System (CARS), available on our website:

<https://cehs.unl.edu/edpsych/current-student-support/course-access-request-system-cars/>



# ***Orientation Schedule***

**9am-12pm:**

**Breakfast Provided!**

**New Student Orientation**

**Teachers College Hall (TEAC) Room 105**

**Check-in begins at 8:30**

**12pm: Lunch**

**Lunch Provided!**

**Carolyn Pope Edwards Hall (CPEH) Room 227**

**Individual Program  
Orientations will take place  
after lunch. Please contact your  
program director for more  
information!**



**If you have any questions, please email Jules and Zee!**

**Jules: [jmeyers19@unl.edu](mailto:jmeyers19@unl.edu)**

**Zee: [mcronin6@unl.edu](mailto:mcronin6@unl.edu)**



## Did you recently receive a fellowship?

Many of our fellowships are made possible by the generosity of donors. As part of your fellowship, you may be required to write a letter of thanks to your donor. Please refer to your fellowship letter and provide your letter of thanks (and your headshot) to Jules ASAP!

**FAILURE TO SUBMIT YOUR LETTER OF THANKS BY THE DEADLINE MAY IMPACT YOUR ABILITY TO RECEIVE FUTURE FUNDING!!!**

## STUDENTS ON ASSISTANTSHIPS:

If you have an **EXTERNAL** assistantship (i.e., not within EDPS, such as Buros, CYFS, PSYC, etc.), please send Jules a copy of your signed assistantship contract!

If you have an assistantship within EDPS, you do not need to send a copy of your contract to Jules.



**PLEASE EMAIL JULES YOUR SIGNED CONTRACT NO LATER THAN FRIDAY, SEPTEMBER 5TH!**



## ATTENTION STUDENTS & FACULTY

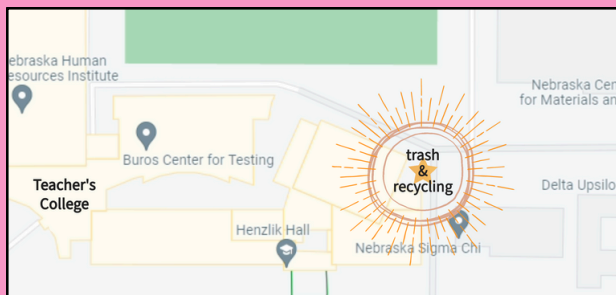
**Please remember that all graduate students, faculty, and staff are responsible for their own accumulated office trash & recycling.**

**IT IS YOUR RESPONSIBILITY TO TAKE OUT YOUR OWN TRASH & RECYCLING. IT IS NOT THE RESPONSIBILITY OF FACILITIES, MAINTENANCE, OR EDPS STAFF.**



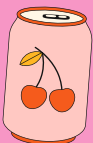
**ALL office trash & recycling must be disposed in the dumpsters behind Henzlik. Although you may use the trash receptacles in the hallway, those bins are **NOT** to be used for personal office trash.**

The dumpsters are located to the south of Mabel Lee Recreation Fields near the driveway between Henzlik and Nebraska Sigma Chi. Please see the image below for a description of where to place your trash & recycling.



**For plastic & aluminum recycling, please utilize the trash bins located in the hallways throughout the building.**

**Questions? Email Jules or Zee!**



# Weekly WINS-day



Amanda Barrett, Melanie Willis, Jim Bovaird, and Jay Jeffries won the Assessment Community award at APA for our work regarding the measurement of adverse childhood experiences.



**SHARE  
YOUR  
WINS!**

<https://go.unl.edu/weeklywins-day>

**Way to go!**

Additionally, Jay was also selected to attend (and then "graduate" from) a 9-day training from the Institute of Educational Sciences on Cluster-Randomized Trials at Northwestern University.



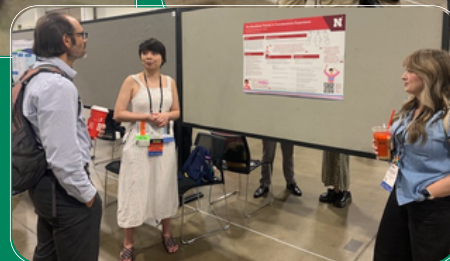
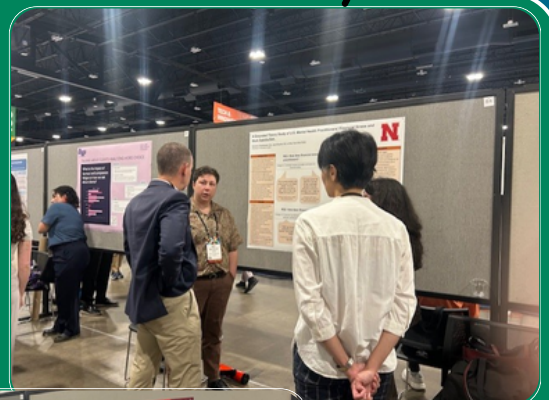
So much good stuff and many wins this summer!

**NO JOY IS TOO  
SMALL TO  
CELEBRATE!**



**CoPsych at APA**

**Thank you for stopping by,  
Dean Reese!**



# News from the UNL Writing Center

In this era of ubiquitous generative AI tools, please remember there's an easy-to-access **FREE** service on campus where you can talk to another friendly human about your writing!

There are three ways you can connect with a Consultant: In Person, Online (a real-time, video conversation), and eTutoring (email feedback). In-person Writing Center appointments are held in Andrews Hall 102. Writers may choose between 25- and 50-minute appointments. To learn more about online options and view video tutorials, visit:

<https://writing.unl.edu/online-writing-center-services/>

The Writing Center also offers **accountability appointments**, in which you can sit beside a Writing Center consultant and talk as much or as little as you like about your writing. You can indicate that this is what you're looking for when you sign up for an appointment.

Sign up any time by visiting [unl.mywconline.com](http://unl.mywconline.com).

For more information about the Writing Center, please visit <https://writing.unl.edu/>.



## UNL CAPS Update

(Counseling & Psychological Services)

UNL CAPS has implemented a new extension of services to their short-term model. Most aspects at CAPS remain unchanged. Every student who utilizes individual, crisis, or couples therapy services after July 1<sup>st</sup> of this year will have their first 8 sessions covered by their UPFF. If students are recommended by their therapist to extend services at CAPS after their 8 sessions, there will be a subsidized fee of \$50 per session for the remainder of their time at UNL. There is financial assistance available through the University Mental Health Foundation Fund. Students may discuss this with their counselor and apply if needed.

UPFF will continue to cover the following services at CAPS:

- Short-term therapy, including intake and a maximum of 7 additional therapeutic appointments
- All referral appointments & consultation appointments
- All group counseling appointments & workshops
- All crisis or urgent phone to the CAPS on-call counselor. In person services may incur a fee
- CAPS Prevent Suicide Programming, as well as Outreach & Prevention Programming





# Upcoming Office Hours

August 21-27, 2025

Thurs. Aug. 21: 12-1pm

Fri. Aug. 22: 3-4pm

Monday, Aug. 25: 12-1pm

Tuesday, Aug. 26: 1-2pm

Wednesday, Aug. 27: 4-5pm (via Zoom)

Susan Swearer, Ph.D., LP  
Chairperson  
Department of Educational Psychology  
University of Nebraska-Lincoln

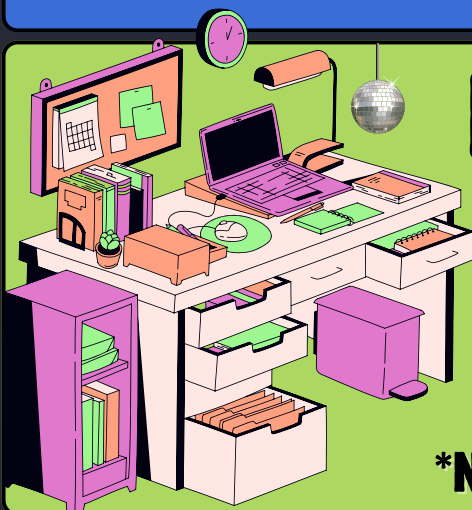


## Need to reserve a room?

<https://tinyurl.com/TEACRoomRes>

\*Note: please submit your request no later than 48hrs before your reservation!

Questions? Ask Zee!

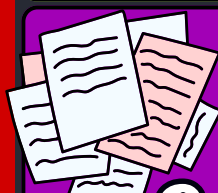


## Need to meet w/ Jules?

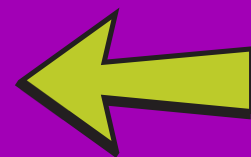
If you would like to meet with Jules, you must send them an email to set up an appointment.

Appointments available in-person and via Zoom

\*Note: Jules is unable to meet on Wednesdays



need to request materials from CSPC?



Microsoft Form Link: <https://go.unl.edu/cspcmaterials>