

December 17, 2025

Volume 173

Weekly Wednesday

Department of Educational Psychology

What's Inside:

- 1) Top Stories
- 2) News
- 3) Around Lincoln
- 4) The Week Ahead



We made it! Happy end of the Fall 2025 semester! Whether you're preparing for graduation, working on your thesis/dissertation, or just looking forward to a break from your first year of graduate school, I hope that this upcoming break brings you joy, rest, play, and peace. The EDPS Office will be closed Monday, December 22nd through Sunday, January 4th. We will be back in office on Monday, January 5th! Looking for some fun things to do over break? Keep reading the newsletter for some ideas! This will be the last Weekly Wednesday of 2025. Classes resume on January 12th.

I'll see you again with another newsletter on Wednesday, January 7th! - Jules

**Take a
break**



GRADUATING IN DECEMBER?

**CONGRATULATIONS!!!! YOU DID IT!!!!
I WISH YOU NOTHING BUT JOY IN
ALL YOUR FUTURE PERSONAL AND
PROFESSIONAL ENDEAVORS!**

~~~~~  
WE'D LOVE TO KEEP IN TOUCH WITH YOU POST-GRADUATION! NO SPAM EMAILS, I PROMISE.

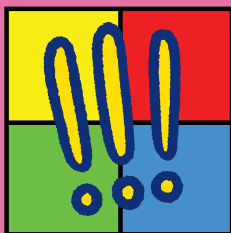
**PRIOR TO GRADUATION, CAN YOU PLEASE  
TAKE A FEW MINUTES TO COMPLETE THE  
ALUMNI COMMUNICATIONS SURVEY?**

**YOU CAN ACCESS THE  
SURVEY BY SCANNING THE  
QR CODE OR BY CLICKING  
THE LINK BELOW**



**SURVEY LINK:**

**[HTTPS://FORMS.OFFICE.COM/R/ANHQ5KQWBZ](https://forms.office.com/R/ANHQ5KQWBZ)**



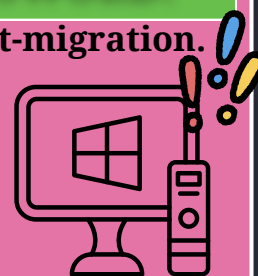
**UNL WILL COMPLETE ITS YEARLONG MICROSOFT 365 AND  
WORKSTATION MIGRATION JAN. 2-5, WHEN IT SHIFTS TO A NEW  
EMAIL DOMAIN AND WRAPS UP THE FINAL PHASE OF THE FUTURE  
READY CLOUD COLLABORATION WORKSPACE MIGRATION PROJECT.**

## WHAT DOES THIS MEAN?

**Students, staff, and faculty will temporarily lose access to Outlook, OneDrive and other Microsoft tools during the final phase, with queued email delivered once the system goes online Jan. 5. OneDrive files may take additional days to finish migrating.**

**POST-MIGRATION, YOU WILL LOG IN TO UNL COMPUTERS  
WITH NUID@NEBRASKA.EDU AND CURRENT PASSWORD.**

**Note: you will need to re-share OneDrive and SharePoint links post-migration. Virtual assistance will be offered Jan. 5-9 via the ITS Zoom Support Room from 8 to 10:30 a.m., with walk-in help at all HuskerTech locations from 8 a.m. to 5 p.m. Additional pop-up help centers will operate the week of Jan. 12 at Cather Dining Center and the Osborne Legacy Complex. Students, faculty and staff can also contact the HuskerTech Help Center at 402-472-3970 or [nusupport@nebraska.edu](mailto:nusupport@nebraska.edu).**





**EDPS doctoral students Amanda Barrett and Kyle Bizal coauthored a test review of the Woodcock-Johnson V with Dr. Beth Doll, forthcoming in The 22nd Mental Measurements Yearbook.**

**Thank you, Dr. Doll, for your mentorship! We will miss you!**

## CAMPUS BUS AND VAN SERVICES SHIFT DURING BREAK



StarTran bus and campus van services will be adjusted between the Fall and Spring semesters.

- Full Bus Service will run through Friday, December 19.
- On December 19, Route 23 will operate as a timed route until 6:00 p.m. No On-call services will be available after 6:00 p.m.
- Reduced Service will operate on Monday, December 22 and Tuesday, December 23, as offices and research activities will continue during those days.
- Reduced service will include On-call service for Route 22 and 23.
- The university will be closed from Wednesday, December 24 through Sunday, January 4. No Service will be available.
- Offices and research resume on Monday, January 5, so Reduced Service will continue for the week of January 5 through 9.
- Reduced service will include On-call service for Route 22 and 23.
- Full Service will resume for the Spring semester starting Monday, January 12.
- To request a van ride on Route 22 or 23, call 402-326-8807.
- Riders need to be present at the designated stop when they call.
- Provide destination request.
- Riders may board vans only at designated stops.
- Last ride call is serviced at 5:50 p.m.

Routes and rider information are detailed at Campus Bus Service  
<https://parking.unl.edu/campus-bus-service/>

## JUST A REMINDER...

The recycling bins in the EDPS mailroom and copier room are for PAPER ONLY. Please do not throw plastic or food waste in those bins! We have had a LOT of food thrown away in recycling bins, meaning we can no longer recycle the paper. Please be mindful of where you are throwing things away! Utilize the trash bins under the coffee bar or the all in the hall bins for any food or plastic-related waste.





# Weekly WINS-day

Last week, Dania served as a panelist at the Nebraska Fulbright Chapter's community event held at the Hilmer Art Gallery at the College of Saint Mary. Dania was the only international Fulbright student invited to speak on the panel, joining distinguished Fulbright alumni and faculty in a conversation focused on global learning, cultural exchange, and community engagement!

During the panel, Dania shared insights from her journey from Kashmir, Pakistan, to the UNL, highlighting how her research in mindfulness and educational psychology connects to broader themes of global understanding and cross-cultural collaboration. Dania's perspective added an important international voice to the discussion and resonated strongly with attendees. Many international students were in the audience as well!

★ HOORAY, DANIA! Congratulations on such an accomplishment!!!!



## Looking for fun things to do over break?

Want to explore downtown Lincoln?  
Don't know where to start?  
Check out this interactive map!  
<https://downtownlincoln.org/>



Want to know about upcoming events around town?

Check out the "This Week in Lincoln" newsletter! It's run by a Lincoln Local. You can even sign up for email alerts! AND, it's free!

<https://lincoln.ghost.io/>





# Upcoming Office Hours

December 18-24, 2025

Thurs. Dec. 18: 2-3pm

Fri. Dec. 19: 11am-12pm

**Have a  
wonderful  
winter break!**

Susan Swearer, Ph.D., LP  
Chairperson  
Department of Educational Psychology  
University of Nebraska-Lincoln



## NEED TO MEET W/ JULES?

If you would like to meet with Jules, you must send them an email to set up an appointment.

APPOINTMENTS AVAILABLE IN-PERSON AND VIA ZOOM

\*Note: Jules is unable to meet on Wednesdays

**EMAIL JULES**  
✉  
**JMEYERS19@UNL.EDU**

## Want to reserve a room?

While Zee is out of the office, room reservation requests can be submitted at the following link:

<https://unlscheduling.nebraska.edu>

Please note: Many rooms have already been booked through the end of the semester. Submission of a room request does not guarantee your preferred room.



## need to request materials from CSPC?



Microsoft Form Link: <https://go.unl.edu/cspcmaterials>



HAVE A  
GREAT  
BREAK!

