

Weekly Wednesday

Department of Educational Psychology

What's Inside:

- 1) Top Stories
- 2) Updates & News
- 3) EDPS Spotlights
- 4) Around Campus
- 5) December Happiness
- 6) The Week Ahead



EDPS GA EVALUATIONS

Don't forget! If you are on an assistantship within EDPS, you MUST complete a SEMESTERLY evaluation with your supervisor.

ROUTING ORDER FOR SIGNATURES:
You → Your supervisor → Your advisor →
the Department Chair (Sue Swearer)

Find the evaluation form here:

[HTTPS://CEHS.UNL.EDU/EDPSYCH/CURRENT-STUDENT-SUPPORT/](https://cehs.unl.edu/edpsych/current-student-support/)

**DUE NO LATER
THAN DEC. 17TH**

by 4:00pm



IT'S TIME FOR THE ANNUAL EDPS GINGERBREAD DECORATING CONTEST!

Each program will complete a gingerbread house. The gingerbread houses will be displayed in TEAC 114 the week of final exams, and the entire department will vote for their favorite! Winning program gets a pizza party in Spring 2026.

Gingerbread houses are due to the front office by

Friday, December 12th. Voting will take place

December 15–19, with the winning team
announced in the first Weekly Wednesday of 2026.

WHO WILL WIN??? TIME WILL TELL!!! BEST OF LUCK, AND HAVE FUN!



Oolong, Farewell... Honoring Dr. Beth Doll

You are invited to join us for an afternoon of celebrating the accomplishments of Dr. Beth Doll during her time at UNL. Stop by for tea and light refreshments, and wish Beth a happy retirement!



Wednesday
December 10

3:00–
5:00pm

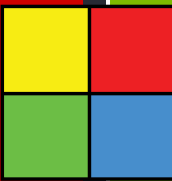
227
CPEH

**Join the Department of
Educational Psychology in
celebrating Dr. Beth Doll, who
will be retiring in December.**

*Tea will be available at the event, as
well as a spattering of finger foods!*

**Wed. Dec. 10th
CPEH 227
3-5pm**





UNL WILL COMPLETE ITS YEARLONG MICROSOFT 365 AND WORKSTATION MIGRATION JAN. 2-5, WHEN IT SHIFTS TO A NEW EMAIL DOMAIN AND WRAPS UP THE FINAL PHASE OF THE FUTURE READY CLOUD COLLABORATION WORKSPACE MIGRATION PROJECT.

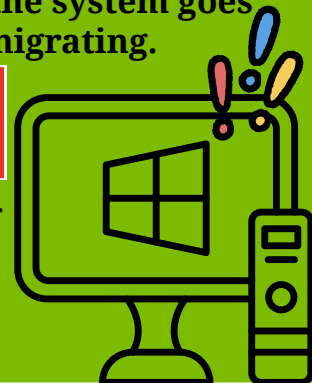


WHAT DOES THIS MEAN?

Students will temporarily lose access to Outlook, OneDrive and other Microsoft tools during the final phase, with queued email delivered once the system goes online Jan. 5. OneDrive files may take additional days to finish migrating.

**AFTERWARD, STUDENTS WILL LOG IN WITH
NUID@NEBRASKA.EDU AND CURRENT PASSWORD.**

Note: you may need to re-share OneDrive and SharePoint links post-migration. Virtual assistance will be offered Jan. 5-9 via the ITS Zoom Support Room from 8 to 10:30 a.m., with walk-in help at all HuskerTech locations from 8 a.m. to 5 p.m. Additional pop-up help centers will operate the week of Jan. 12 at Cather Dining Center and the Osborne Legacy Complex. Students, faculty and staff can also contact the HuskerTech Help Center at 402-472-3970 or nusupport@nebraska.edu.



ARE YOU PREPARED FOR WINTER AND WEATHER-RELATED NEWS?

When winter weather strikes, it can impact University of Nebraska-Lincoln operations in a number of ways. When inclement weather is in the forecast, students, faculty and staff should be prepared to complete assignments and/or work remotely.

LEARN MORE ABOUT THE DIFFERENT TYPES OF WEATHER CLOSURES AND ALERTS HERE: [HTTPS://GO.UNL.EDU/ZM7F](https://go.unl.edu/zm7f)



GRADUATE FELLOWSHIPS AND AWARDS IS NOW OPEN!

THE OFFICE OF GRADUATE STUDIES INVITES NOMINATIONS FOR ITS ANNUAL GRADUATE RECOGNITION AWARDS, FOLSOM AWARDS, GRADUATE STUDENT FELLOWSHIPS, AND POSTDOC AWARDS.

Faculty and staff who would like to nominate an individual should review the descriptions for each nomination category and use the online nomination form where you can provide details about the nominee and nominator. Please note, only faculty and staff may submit a nomination.

Nominators will be required to submit a nomination letter (letter of support/recommendation) and the nominee's CV at the time of nomination. A confirmation email will be generated once the nomination form is completed. Departments may nominate more than one student for fellowship consideration.

QUESTIONS?

Contact Jamie Longwell at jamie.longwell@unl.edu



FACULTY AND STAFF CAN SUBMIT NOMINATIONS BY DEC. 17, 2025 [HERE](#).

Get to know your GAB/SOS Board Members!

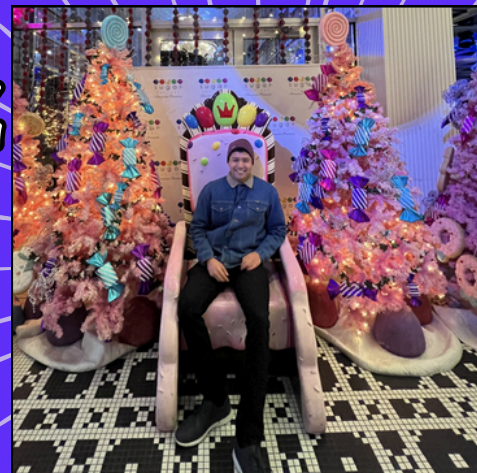
Introducing... Alexis Chavez

Alexis is a QQPM student who currently works in the Nebraska Academy for Methodology, Analytics, & Psychometrics (MAP Academy).

What is something you've done recently that you're really proud of?



I finished third place in the Omaha Hot Cider Hustle Half Marathon in October of this year!



What's one of the best books that you've read recently?

The Dispossessed: An Ambiguous Utopia by Ursula K. Le Guin



In terms of student support, what are your specialties or areas of interest in which you can provide support to students in EDPS?

I would say my specialty, or at least what I hope I could do, is to assist SOS in being an organization that can better assist students in finding resources or places to go to when having to manage issues in the department that might not be able to be addressed by faculty or that they are unsure if it can be addressed by them.

What is something you love about EDPS?

I love the diversity of research that is being done by students in the department! It is always interesting to see what others are doing.



COOL THINGS HAPPENING IN EDPS

COOL!

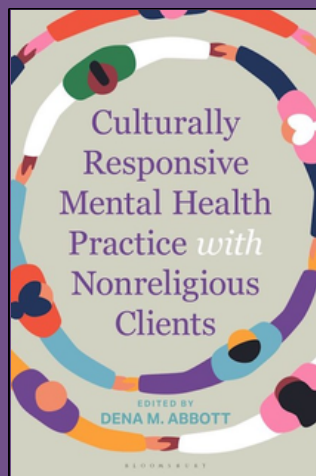


AS PART OF DR. SUSAN SWEARER'S BRAVE LAB, JARED NOETZEL AND MELANIE WILLIS PRESENTED AT THE ASSOCIATION OF BEHAVIORAL AND COGNITIVE THERAPIES 59TH ANNUAL CONVENTION IN NEW ORLEANS, NOVEMBER 20TH - 22ND. THE PRESENTATION WAS TITLED UNDERSTANDING THE U.S. POLITICAL DIVIDE IN MENTAL HEALTH SERVICE UTILIZATION: HELP-SEEKING AND INTERNALIZED DISTRESS IN YOUNG ADULTS. THEY ALSO MET UNL'S SCHOOL PSYCHOLOGY ALUMNA, LINNEA SWANSON. LINNEA IS NOW A PEDIATRIC PSYCHOLOGIST AT ADVOCATE CHILDREN'S HOSPITAL AND WAS PRESENTING WITH ST. JUDE'S RESEARCH HOSPITAL.



BRAVE LAB

BULLYING RESEARCH and VICTIM EMPOWERMENT
RESEARCH LAB



DID YOU HEAR THE NEWS?

DR. DENA ABBOTT'S NEW BOOK IS AVAILABLE FOR PRE-ORDER!

YOU CAN READ MORE ABOUT IT AND PRE-ORDER THE BOOK AT THE LINK BELOW!

[HTTPS://GO.UNL.EDU/ABBOTT_BOOK](https://go.unl.edu/abbott_book)



nami

Ending (EtS) the Silence

National Alliance on Mental Illness

The Lincoln Affiliate of NAMI is offering an opportunity to UNL students to participate in a NAMI program called Ending the Silence (EtS). NAMI will train UNL students to co-deliver a free, evidence-based, 50-minute session designed for middle and high school students about mental health conditions alongside a young adult with a mental health condition who will describe their journey to recovery.

The presentation is already developed including short videos. Audience members can ask questions and gain understanding of an often-misunderstood topic.

Through dialogue, UNL students can help grow the movement to end stigma

There is training and \$25 stipend for each 50-minute presentation they give. Here is a link to the EtS webpage. Interested students should contact Brent Toalson at jbtoalson63@gmail.com.

EDPS 991-001

Spring 2026 DLS Course Offerings

EDPS 991-002

SOCIAL & AFFECTIVE NEUROSCIENCE

With Dr. Bella Starling Alves

Thursdays @ 1:30-4:20pm

This course counts towards the Educational Neuroscience Certificate and requires no prerequisites

Explore current methodology, trends, and findings in social & affective neuroscience. Social neuroscience has studied how biological systems contribute to social/interpersonal behavior, and affective neuroscience has focused on the biological mechanisms underlying emotions, as well as psychiatric disorders with emotional disturbance.

DEVELOPMENTAL COGNITIVE NEUROSCIENCE

With Dr. Carrie Clark

Thursdays @ 9-11:50am

This course counts towards the Educational Neuroscience Certificate.

Learn about development in cognitive domains like memory, executive function, attention, and social cognition through the lens of neuroscience and neurobiology. Students will gain knowledge of the trajectories of growth in neurophysiological systems from prenatal life to late adulthood. We will consider the role of socio-contextual experiences in shaping neural circuitry and discuss ways to apply this information to support learning and wellbeing in applied developmental contexts.

DECEMBER HAPPINESS

This month, seek out joy together. 

SUNDAY	MONDAY	TUESDAY	WEDNESDAY	THURSDAY	FRIDAY	SATURDAY
	1 Say hello to your neighbors.	2 Ask more interesting questions.	3 Consider what you want in a relationship.	4 Start your day with gratitude.	5 Make space for the possibility of forgiveness.	6 Slow down and savor the holidays.
7 Spend quality time with loved ones.	8 Live with integrity.	9 Have a conversation about your disagreements.	10 Invite someone on a walk.	11 Relax with a friend or partner.	12 Look for beauty in what you see.	13 Lean on a friend when you're in need.
14 Be patient and empathic with others.	15 Show your affection with physical touch.	16 Be brave.	17 Send a loving text message.	18 Be generous with people.	19 Meditate for a few minutes at work.	20 Own up to your mistakes.
21 Join in the Big Joy Project!	22 How connected are you to humanity? Take our quiz to find out.	23 Go outside of your comfort zone.	24 Have a meaningful conversation with a young person.	25 Uphold a holiday ritual.	26 Show your love through kindness.	27 Remember funny moments from your day.
28 Care for yourself when you're struggling.	29 Eat mindfully.	30 Find a community where you can grow.	31 For the new year, let something go.		 Greater Good Science Center ggsc.berkeley.edu greatergood.berkeley.edu	



BAKE COOKIES FOR A NEIGHBOR



PARTICIPATE IN
MUTUAL AID

TELL YOURSELF HOW PROUD
YOU ARE FOR BEING YOUR
AUTHENTIC SELF



PLAY IN
THE SNOW



LEND A
HELPING HAND



HOST A CRAFT NIGHT



SMILE AT
EVERY DOG
YOU SEE

SCHEDULE A LONG
PHONE CALL
WITH A FRIEND





Upcoming Office Hours

December 4-10, 2025

Please email Sue
(sswearer@unl.edu) to
set up an appointment

Susan Swearer, Ph.D., LP
Chairperson
Department of Educational Psychology
University of Nebraska-Lincoln



NEED TO MEET W/ JULES?

If you would like to meet with Jules, you must send them an email to set up an appointment.

APPOINTMENTS AVAILABLE IN-PERSON AND VIA ZOOM

*Note: Jules is unable to meet on Wednesdays

EMAIL JULES
[JMEYERS19@UNL.EDU](mailto:jmeyers19@unl.edu)

Want to reserve a room?

While Zee is out of the office, room reservation requests can be submitted at the following link:

<https://unlscheduling.nebraska.edu>

Please note: Many rooms have already been booked through the end of the semester. Submission of a room request does not guarantee your preferred room.



need to request materials from CSPC?



Microsoft Form Link: <https://go.unl.edu/cspcmaterials>

December 10, 2025

Volume 172

Weekly Wednesday

Department of Educational Psychology

What's Inside:

- 1) Top Stories
- 2) EDPS News
- 3) Around Campus
- 4) The Week Ahead



Happy last week of classes!!!

We are so close to the end of the semester! Can you believe it? I hope you enjoy your upcoming break.

Best of luck on final exams next week!
I believe in you! You're going to do great!



EDPS GA EVALUATIONS

DUE 1 WEEK FROM TODAY

Don't forget! If you are on an assistantship within EDPS, you MUST complete a SEMESTERLY evaluation with your supervisor.

Failure to submit your self evaluations to Jules on time **WILL impact your ability to receive future assistantships within EDPS.**

STUDENTS, IT IS YOUR RESPONSIBILITY TO FILL OUT THE EVALUATION FORM, SET UP A MEETING WITH YOUR SUPERVISOR, AND ROUTE YOUR FORMS FOR SIGNATURES. STUDENTS SHOULD SUBMIT THEIR COMPLETED EVALUATION TO JULES NO LATER THAN 4PM WEDNESDAY, DECEMBER 17TH.

ROUTING ORDER FOR SIGNATURES:
You → Your supervisor → Your advisor →
the Department Chair (Sue Swearer)
once complete: email to Jules

★★★★★
**DUE NO LATER
THAN DEC. 17TH**
★★★★★ by 4:00pm

Find the evaluation form here:

[HTTPS://CEHS.UNL.EDU/EDPSYCH/CURRENT-STUDENT-SUPPORT/](https://cehs.unl.edu/edpsych/current-student-support/)

GRADUATING IN DECEMBER?

CONGRATULATIONS!!!! YOU DID IT!!!!
I WISH YOU NOTHING BUT JOY IN
ALL YOUR FUTURE PERSONAL AND
PROFESSIONAL ENDEAVORS!

~~~~~  
WE'D LOVE TO KEEP IN TOUCH WITH YOU POST-  
GRADUATION! NO SPAM EMAILS, I PROMISE.

PRIOR TO GRADUATION, CAN YOU PLEASE  
TAKE A FEW MINUTES TO COMPLETE THE  
ALUMNI COMMUNICATIONS SURVEY?

**SURVEY LINK:**

[HTTPS://FORMS.OFFICE.COM/R/ANHQ5KQWBZ](https://forms.office.com/R/ANHQ5KQWBZ)

YOU CAN ACCESS THE  
SURVEY BY SCANNING THE  
QR CODE OR BY CLICKING  
THE LINK BELOW





Get to know your GAB/SOS Board Members!

Introducing...

# TEAGAN WILSON

Teagan is a CoPsych student who is currently teaching EDPS 350 this academic year.

Get to know more about Teagan below!

**What are some things you love about EDPS?**



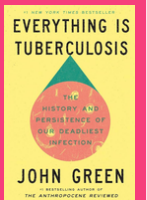
I love the community in this department. People are always so kind and I love all the little conversations and catch ups that happen in the halls between meetings and classes!

**What's something you've done recently that you're really proud of?**  
I just ran a half marathon with my mom! She's way faster than me but it was so fun to run with her and she helped me hit my goal time!



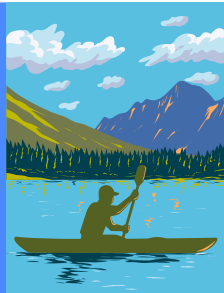
**What's one of the best books that you've read recently?**

I don't think I could ever pick a favorite book, but a great one I recently read is Bright Young Women by Jessica Knoll with an honorable mention for Everything is Tuberculosis by John Green.



**Where is your favorite place you've ever travelled?**

My favorite place is anywhere with mountains (bonus if there's lakes too)! My parents instilled a love of the outdoors in me and I think my favorite was backpacking in Glacier National Park!



**In terms of student support, what are your specialties or areas of interest in which you can provide support to students in EDPS?**

I hope that I'm able to serve as a sort of liaison between students and faculty. SOS is an amazing resource that we have in EDPS and I hope to be able to help make it an organization that meets the needs of students and faculty in our department so we can continue to create the best possible graduate experiences for students.

EDPS News



## GINGERBREAD HOUSES DUE FRIDAY!

Each program will complete a gingerbread house. The gingerbread houses will be displayed in TEAC 114 the week of final exams, and the entire department will vote for their favorite! Winning program gets a pizza party in Spring 2026.

Gingerbread houses are due to the front office by Friday, December 12th. Voting will take place December 15-19, with the winning team announced in the first Weekly Wednesday of 2026.

**WHO WILL WIN??? TIME WILL TELL!!! BEST OF LUCK, AND HAVE FUN!**







UNL WILL COMPLETE ITS YEARLONG MICROSOFT 365 AND WORKSTATION MIGRATION JAN. 2-5, WHEN IT SHIFTS TO A NEW EMAIL DOMAIN AND WRAPS UP THE FINAL PHASE OF THE FUTURE READY CLOUD COLLABORATION WORKSPACE MIGRATION PROJECT.

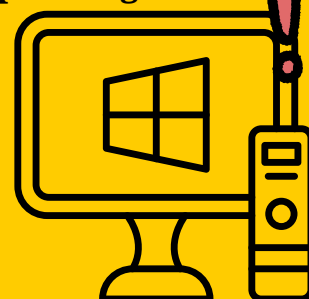
# WHAT DOES THIS MEAN?

Students will temporarily lose access to Outlook, OneDrive and other Microsoft tools during the final phase, with queued email delivered once the system goes online Jan. 5. OneDrive files may take additional days to finish migrating.

**POST-MIGRATION, YOU WILL LOG IN TO UNL COMPUTERS WITH NUID@NEBRASKA.EDU AND CURRENT PASSWORD.**

Note: you will need to re-share OneDrive and SharePoint links post-migration.

Virtual assistance will be offered Jan. 5-9 via the ITS Zoom Support Room from 8 to 10:30 a.m., with walk-in help at all HuskerTech locations from 8 a.m. to 5 p.m. Additional pop-up help centers will operate the week of Jan. 12 at Cather Dining Center and the Osborne Legacy Complex. Students, faculty and staff can also contact the HuskerTech Help Center at 402-472-3970 or [nusupport@nebraska.edu](mailto:nusupport@nebraska.edu).



## STUDENT ART SALE!

The University of Nebraska—Lincoln School of Art, Art History and Design is hosting art sales in ceramics, printmaking and photography Dec. 12-13 in Richards Hall, room 118. Hours for the sales are 9 a.m. to 6 p.m. Dec. 12 and 9 a.m. to 5 p.m. Dec. 13. Admission to the sales is free and open to the public. Cash, checks and credit cards will be accepted at both sales.

Learn more at the link below!

<https://go.unl.edu/studentartsale>

SUPPORT  
LOCAL  
ARTISTS



**nami**

National Alliance on Mental Illness

## Ending (EtS) the Silence

The Lincoln Affiliate of NAMI is offering an opportunity to UNL students to participate in a NAMI program called Ending the Silence (EtS). NAMI will train UNL students to co-deliver a free, evidence-based, 50-minute session designed for middle and high school students about mental health conditions alongside a young adult with a mental health condition who will describe their journey to recovery. The presentation is already developed including short videos. Audience members can ask questions and gain understanding of an often-misunderstood topic. Through dialogue, UNL students can help grow the movement to end stigma

There is training and \$25 stipend for each 50-minute presentation they give. Here is a link to the EtS webpage. Interested students should contact Brent Toalson at [jbtoalson63@gmail.com](mailto:jbtoalson63@gmail.com).





# Upcoming Office Hours

December 11-17, 2025

Thurs. Dec. 11: 2-3pm

Fri. Dec. 12: 1-2pm

Mon. Dec. 15: 1-2pm

Tues. Dec. 16: 1-2pm

Wed. Dec. 17: 12-1pm Via Zoom

Susan Swearer, Ph.D., LP  
Chairperson  
Department of Educational Psychology  
University of Nebraska-Lincoln



## NEED TO MEET W/ JULES?

If you would like to meet with Jules, you must send them an email to set up an appointment.

APPOINTMENTS AVAILABLE IN-PERSON AND VIA ZOOM

\*Note: Jules is unable to meet on Wednesdays

EMAIL JULES  
JMEYERS19@UNL.EDU

## Want to reserve a room?

While Zee is out of the office, room reservation requests can be submitted at the following link:

<https://unlscheduling.nebraska.edu>

Please note: Many rooms have already been booked through the end of the semester. Submission of a room request does not guarantee your preferred room.



## need to request materials from CSPC?



Microsoft Form Link: <https://go.unl.edu/cspcmaterials>





*December 17, 2025*

*Volume 173*

# Weekly Wednesday

Department of Educational Psychology

## What's Inside:

- 1) Top Stories
- 2) News
- 3) Around Lincoln
- 4) The Week Ahead





We made it! Happy end of the Fall 2025 semester! Whether you're preparing for graduation, working on your thesis/dissertation, or just looking forward to a break from your first year of graduate school, I hope that this upcoming break brings you joy, rest, play, and peace. The EDPS Office will be closed Monday, December 22<sup>nd</sup> through Sunday, January 4<sup>th</sup>. We will be back in office on Monday, January 5<sup>th</sup>! Looking for some fun things to do over break? Keep reading the newsletter for some ideas! This will be the last Weekly Wednesday of 2025. Classes resume on January 12<sup>th</sup>.

I'll see you again with another newsletter on Wednesday, January 7th! - Jules

**Take a  
break**



## GRADUATING IN DECEMBER?

**CONGRATULATIONS!!!! YOU DID IT!!!!  
I WISH YOU NOTHING BUT JOY IN  
ALL YOUR FUTURE PERSONAL AND  
PROFESSIONAL ENDEAVORS!**

~~~~~  
WE'D LOVE TO KEEP IN TOUCH WITH YOU POST-GRADUATION! NO SPAM EMAILS, I PROMISE.

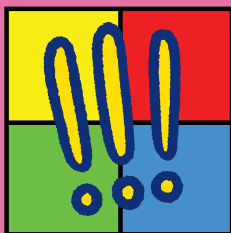
**PRIOR TO GRADUATION, CAN YOU PLEASE
TAKE A FEW MINUTES TO COMPLETE THE
ALUMNI COMMUNICATIONS SURVEY?**

**YOU CAN ACCESS THE
SURVEY BY SCANNING THE
QR CODE OR BY CLICKING
THE LINK BELOW**



SURVEY LINK:

[HTTPS://FORMS.OFFICE.COM/R/ANHQ5KQWBZ](https://forms.office.com/R/ANHQ5KQWBZ)



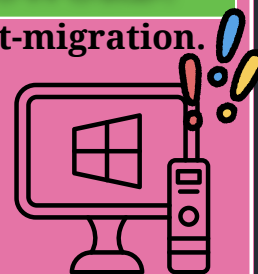
**UNL WILL COMPLETE ITS YEARLONG MICROSOFT 365 AND
WORKSTATION MIGRATION JAN. 2-5, WHEN IT SHIFTS TO A NEW
EMAIL DOMAIN AND WRAPS UP THE FINAL PHASE OF THE FUTURE
READY CLOUD COLLABORATION WORKSPACE MIGRATION PROJECT.**

WHAT DOES THIS MEAN?

Students, staff, and faculty will temporarily lose access to Outlook, OneDrive and other Microsoft tools during the final phase, with queued email delivered once the system goes online Jan. 5. OneDrive files may take additional days to finish migrating.

**POST-MIGRATION, YOU WILL LOG IN TO UNL COMPUTERS
WITH NUID@NEBRASKA.EDU AND CURRENT PASSWORD.**

Note: you will need to re-share OneDrive and SharePoint links post-migration. Virtual assistance will be offered Jan. 5-9 via the ITS Zoom Support Room from 8 to 10:30 a.m., with walk-in help at all HuskerTech locations from 8 a.m. to 5 p.m. Additional pop-up help centers will operate the week of Jan. 12 at Cather Dining Center and the Osborne Legacy Complex. Students, faculty and staff can also contact the HuskerTech Help Center at 402-472-3970 or nusupport@nebraska.edu.





EDPS doctoral students Amanda Barrett and Kyle Bizal coauthored a test review of the Woodcock-Johnson V with Dr. Beth Doll, forthcoming in The 22nd Mental Measurements Yearbook.

Thank you, Dr. Doll, for your mentorship! We will miss you!

CAMPUS BUS AND VAN SERVICES SHIFT DURING BREAK



StarTran bus and campus van services will be adjusted between the Fall and Spring semesters.

- Full Bus Service will run through Friday, December 19.
 - On December 19, Route 23 will operate as a timed route until 6:00 p.m. No On-call services will be available after 6:00 p.m.
 - Reduced Service will operate on Monday, December 22 and Tuesday, December 23, as offices and research activities will continue during those days.
 - Reduced service will include On-call service for Route 22 and 23.
 - The university will be closed from Wednesday, December 24 through Sunday, January 4. No Service will be available.
 - Offices and research resume on Monday, January 5, so Reduced Service will continue for the week of January 5 through 9.
 - Reduced service will include On-call service for Route 22 and 23.
 - Full Service will resume for the Spring semester starting Monday, January 12.
- To request a van ride on Route 22 or 23, call 402-326-8807.
- Riders need to be present at the designated stop when they call.
 - Provide destination request.
 - Riders may board vans only at designated stops.
 - Last ride call is serviced at 5:50 p.m.

Routes and rider information are detailed at Campus Bus Service
<https://parking.unl.edu/campus-bus-service/>

JUST A REMINDER...

The recycling bins in the EDPS mailroom and copier room are for PAPER ONLY. Please do not throw plastic or food waste in those bins! We have had a LOT of food thrown away in recycling bins, meaning we can no longer recycle the paper. Please be mindful of where you are throwing things away! Utilize the trash bins under the coffee bar or the all in the hall bins for any food or plastic-related waste.



Weekly WINS-day

Last week, Dania served as a panelist at the Nebraska Fulbright Chapter's community event held at the Hilmer Art Gallery at the College of Saint Mary. Dania was the only international Fulbright student invited to speak on the panel, joining distinguished Fulbright alumni and faculty in a conversation focused on global learning, cultural exchange, and community engagement!

During the panel, Dania shared insights from her journey from Kashmir, Pakistan, to the UNL, highlighting how her research in mindfulness and educational psychology connects to broader themes of global understanding and cross-cultural collaboration. Dania's perspective added an important international voice to the discussion and resonated strongly with attendees. Many international students were in the audience as well!

★ HOORAY, DANIA! Congratulations on such an accomplishment!!!!



Looking for fun things to do over break?

Want to explore downtown Lincoln?
Don't know where to start?
Check out this interactive map!
<https://downtownlincoln.org/>



Want to know about upcoming events around town?

Check out the "This Week in Lincoln" newsletter! It's run by a Lincoln Local. You can even sign up for email alerts! AND, it's free!

<https://lincoln.ghost.io/>



Upcoming Office Hours

December 18-24, 2025

Thurs. Dec. 18: 2-3pm

Fri. Dec. 19: 11am-12pm

**Have a
wonderful
winter break!**

Susan Swearer, Ph.D., LP
Chairperson
Department of Educational Psychology
University of Nebraska-Lincoln



NEED TO MEET W/ JULES?

If you would like to meet with Jules, you must send them an email to set up an appointment.

APPOINTMENTS AVAILABLE IN-PERSON AND VIA ZOOM

*Note: Jules is unable to meet on Wednesdays

EMAIL JULES
✉
JMEYERS19@UNL.EDU

Want to reserve a room?

While Zee is out of the office, room reservation requests can be submitted at the following link:

<https://unlscheduling.nebraska.edu>

Please note: Many rooms have already been booked through the end of the semester. Submission of a room request does not guarantee your preferred room.



need to request materials from CSPC?



Microsoft Form Link: <https://go.unl.edu/cspcmaterials>



HAVE A
GREAT
BREAK!

