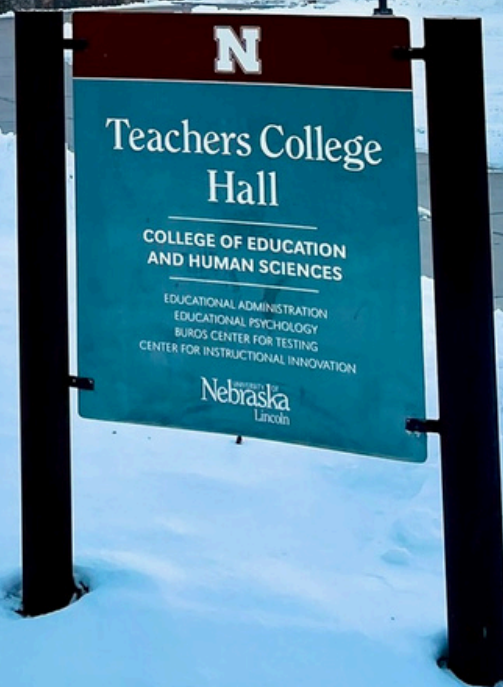


# **Weekly Wednesday**

**Department of Educational Psychology**

## **What's Inside:**

- 1) Top Stories**
- 2) Funding Opportunities**
- 3) Inclusive Excellence**
- 4) February Happiness**
- 5) The Week Ahead**



# CANDIDATE INTERVIEWS

It has been wonderful to have such thoughtful and encouraging discussions with our potential faculty candidates. Thank you to all who have attended candidate visits thus far! We have one more interview this week. Please see the schedule below for more information.

## Dr. Isabella Starling Alves (DLS) - February 6-7th

### Thursday, February 6th

- **9 AM—Meet with EDPS Faculty**
  - TEAC 202
- **12 PM—Research Presentation**
  - TEAC 202
- **1 PM—Lunch w/ DLS Students**
  - TEAC 202

## Masters Comprehensive Exam

(MA COMPS)

next exam:

# MARCH 7th

The deadline to register for the March MA COMPS is **FRIDAY, FEBRUARY 28TH at 4pm.**

Please meet with your advisor to discuss which exam(s) you are required to take.

**LATE APPLICATIONS WILL NOT BE ACCEPTED.**

To register for the MA COMPS, please visit our website to download your registration form: <https://go.unl.edu/edpscomps>

**Your advisor must sign your COMPS registration form, as well as the Graduate Chair (Scott Napolitano)**

Please send your completed registration to Jules via email. Registration is not completed until all parties have signed your registration form.

you can do it!



# Discovery Day Camps at Morrill Hall

Morrill Hall, the Nebraska State Museum on UNL campus, has begun their process of hiring seasonal staff for their summer DISCOVERY DAY CAMPS! Interested students should have at least a year of professional work with youth, the ability to work a regular, Monday-Friday schedule during the summer from May 27-August 4 (some flexibility here), and possess an eagerness to help children discover, create, learn, and have fun.



The deadline to apply is **FEBRUARY 28th**

- Lead Classroom Educator:  
<https://app.joinhandshake.com/stu/jobs/9602657>
- Assistant Seasonal Educator:  
<https://app.joinhandshake.com/stu/jobs/9602634>



# MAP Academy GRA Position Available!

The faculty/staff in the MAP Academy collaborate with scientists from various disciplines within the social, behavioral, education and health fields to help promote the design and implementation of methodologically sound research, and to provide effective grant-writing support to help optimize UNL's research. The graduate student will assist with: managing and analyzing quantitative data; developing and managing Qualtrics surveys; and participating in project and MAP Academy meetings.

**\* \* For more information, click HERE**



**Attention School Psychology and Ed.S. Students!!!**

Bellevue Public Schools is currently seeking applications for School Psychology Interns for the 25/26 school year. If you are still seeking placement for next year, we encourage you to apply.

To learn more or apply, visit: <https://bellevuene.schoolspring.com/>

# CASE Summer Funding

Through the Council of Advancement and Support of Education (CASE), we seek candidates for an exclusive internship program designed to increase and diversify the number of professionals in educational advancement and attract students who may not have previously considered a career in institutional advancement. This program will occur May 28 through July 25, 2025, and includes in-depth work experience, education, and all-expenses-paid attendance at a national CASE conference in Washington D.C., June 22-24, 2025. This is a full-time, 40 hour per week commitment. To view more information about or share these positions with someone you know: Visit <https://nufoundation.org/careers/>.

# 14-DAY WRITING CHALLENGE

Whether you're working on a manuscript, preparing a grant application, or simply looking to develop a consistent writing habit, don't miss this opportunity to join the 14-Day Writing Challenge!

This free resource is open to all faculty, grad students, postdocs, and admins alike - and NCFDD membership is not required! Boost your productivity, stay accountable, and connect with a supportive writing community.

**CLICK HERE TO REGISTER!**



## Women of Courage, Character, and Commitment Award **NOMINATE NOW!**

Each year, women leaders within the UNL campus are recognized as Women of Courage, Character, and Commitment. Nominations are sought of women in as many different fields and roles as possible. Honorees are publicly recognized and presented with an award at an evening celebration on March 27, 2025. All members of the UNL community are invited to nominate a woman who has made a positive impact in your life through professional, personal, mentoring, or peer relationships.

**Nominations are due by 5 p.m. February 27th**

To nominate someone, visit:

<https://gsc.unl.edu/women-courage-character-and-commitment-nomination-form/>



## OGS STUDENT RESEARCH DAYS

The Office of Graduate Studies is hosting **STUDENT RESEARCH DAYS** poster sessions in the Union on Wednesday, April 16th from 3-5pm. This is a great opportunity for students who are unable to attend or travel to larger conferences who want to practice their research presentation skills! There is also a poster competition with travel grant award money up for grabs! New collaborators at the NEAR center this semester would love to provide assistance with these types of research projects!

**REGISTRATION TO PRESENT YOUR POSTER IS NOW OPEN!!**  
**STUDENTS MUST REGISTER BY MARCH 14TH**

To learn more and to register, visit:

<https://research.unl.edu/springresearchdays/graduate-poster-session-and-creative-exhibition/>



Inclusive Excellence

# February Happiness

## February 2025 Happiness Calendar

This month, spread love in your corner of the world.

Keep up with the latest on the science of connection, compassion, and happiness by [subscribing to our newsletters](#).

SUNDAY MONDAY TUESDAY WEDNESDAY THURSDAY FRIDAY SATURDAY

**GG** Greater Good  
**SC** Science Center  
ggsc.berkeley.edu  
greatergood.berkeley.edu



1 Reach out to an old friend.

2 Be someone's cheerleader.

3 Read an engaging book.

4 Notice the good in the world.

5 Try to be less critical.

6 Be a possibilist: Believe that what you do matters.

7 Read our best articles of 2024.

8 Join a community organization.

9 Help a stranger.

10 Choose hope over cynicism.

11 Do something new and exciting with your partner.

12 Befriend someone of a different age.

13 Meditate on new beginnings.

14 Remember a moment when you felt deeply connected.

15 Teach young people to care for the environment.

16 Stand up for what you believe in.

17 Listen with compassion.

18 Be curious during a disagreement.

19 Take a moment to care for yourself when you're struggling.

20 Spend time with a loved one.

21 Get out of your comfort zone.

22 Dance.

23 How grateful are you? Take our quiz to find out.

24 Take a walk and look for beauty.

25 Apply for a love grant from the GGSC.

26 Take a break from screens.

27 Prioritize good sleep.

28 Look for ways to cooperate.



This month, spread love in your corner of the world



Be the biggest cheerleader for your friends



send memes in a group chat



curate a themed playlist for a pal

start a low-pressure book club



wear clothes that make you happy and comfortable



Write & Send Snail Mail



February Happiness



# Upcoming Office Hours

February 6-12, 2025

**Thurs. February 3: 2-3pm**

**Fri. February 4: 11am-12pm**

**Monday, February 10: 1-2pm**

**Tuesday, February 11: 10-11am**

**Wednesday, February 12: 1-2pm**

Susan Swearer, Ph.D., LP  
Chairperson  
Department of Educational Psychology  
University of Nebraska-Lincoln

## Need to reserve a room?

<https://tinyurl.com/TEACRoomRes>

\*Note: requests must be submitted no later than 48hrs before your reservation request  
**Questions? Ask Zee!**



## Jules is back!!!!

Need to meet? Send them an email to set up an appointment!

\*Note: Jules is unable to meet on Wednesdays

## need to request materials from CSPC?



this QR code has been here the whole time!



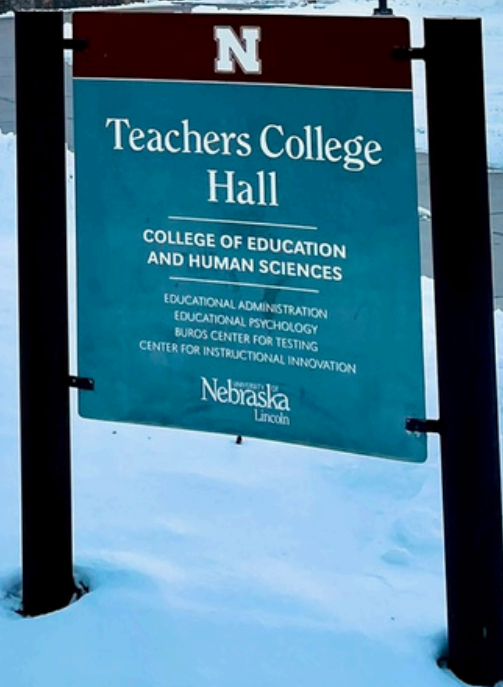
Microsoft Form Link: <https://go.unl.edu/cspcmaterials>

# **Weekly Wednesday**

**Department of Educational Psychology**

## **What's Inside:**

- 1) Top Stories**
- 2) Get Involved!**
- 3) Funding Opportunities**
- 4) Student Support**
- 5) The Week Ahead**



**MA  
COMPS**

# MASTERS ← ← ← COMPREHENSIVE EXAM

# MARCH 7th

The deadline to register for the  
March MA COMPS is **FRIDAY,**  
**FEBRUARY 28TH at 4pm.**

Please meet with your advisor to discuss which exam(s) you are required to take.

**LATE APPLICATIONS WILL NOT BE ACCEPTED.**

To register for the MA COMPS, please visit  
our website to download your registration  
form: <https://go.unl.edu/edpscomps>

Your advisor must sign your COMPS registration  
form, as well as the Graduate Chair (Scott Napolitano)

Please send your completed registration to Jules via email. Registration is  
not completed until all parties have signed your registration form.

All Masters Comprehensive Exams will be  
offered via Canvas. Students must have  
Respondus Lockdown Browser on their  
computers in order to take the exams. If  
you do not have a laptop with access  
to Respondus Lockdown Browser,  
you may borrow one from  
HuskerTech for Free.



## **PLEASE NOTE:**

If you require testing  
accommodations, you must  
have accommodations on  
file with SSD and submit  
your accommodation  
paperwork at the same time  
you submit your COMPS  
registration form.

Please visit the following link to learn how to checkout a laptop from Huskertech:  
<https://nusupport.nebraska.edu/TDClient/33/Portal/Requests/ServiceOfferingDet?ID=19>



# OGS STUDENT RESEARCH DAYS

The Office of Graduate Studies is hosting **STUDENT RESEARCH DAYS** poster sessions in the Union on Wednesday, April 16th from 3-5pm. This is a great opportunity for students who are unable to attend or travel to larger conferences who want to practice their research presentation skills! There is also a poster competition with travel grant award money up for grabs! New collaborators at the NEAR center this semester would love to provide assistance with these types of research projects!

**REGISTRATION TO PRESENT YOUR POSTER IS NOW OPEN!!**  
**STUDENTS MUST REGISTER BY MARCH 14TH**



To learn more and to register, visit:

<https://research.unl.edu/springresearchdays/graduate-poster-session-and-creative-exhibition/>

**Passionate about happiness and well-being? Join EDPS 320: Happiness and Well-being through Positive Psychology as a group facilitator this spring!**

As a group facilitator, you will:

- Lead small group discussions on topics like kindness, self-compassion, and mindfulness
- Facilitate 8 sessions on Fridays (March 14 – May 9) at 10:30 - 11:20 AM and/or 11:30 - 12:20 PM
- Receive a facilitation manual and pre-facilitation meeting

**Gain leadership experience, deepen your knowledge, and make a difference! Reach out to Chelsea Walker ([cwalker36@unl.edu](mailto:cwalker36@unl.edu)) if you are interested!**



**Interesting in making a difference in the world? Consider applying for the Impact Fellows Program. For more information about the program please email Dr. Susan Swearer: [sswearer@unl.edu](mailto:sswearer@unl.edu).**

**Get Involved!**

# MAP Academy GRA Position Available!

The faculty/staff in the MAP Academy collaborate with scientists from various disciplines within the social, behavioral, education and health fields to help promote the design and implementation of methodologically sound research, and to provide effective grant-writing support to help optimize UNL's research. The graduate student will assist with: managing and analyzing quantitative data; developing and managing Qualtrics surveys; and participating in project and MAP Academy meetings.

**For more information, click HERE**



## IMPORTANT UPDATE!

**All available assistantships within EDPS will be posted to our website by March 1st. Students will have until March 14th to apply for the posted positions. Keep an eye on THIS WEBPAGE for opportunities!**

**As a reminder: students must be proactive in seeking and applying for assistantships. Many students find funding outside of the department. All funding opportunities shared with Jules will be posted to the Weekly Wednesday or sent via listserv.**

# JOB OPPORTUNITY!!

A CEHS donor and emeriti professor is interested in funding a graduate student for work on a book that captures the history and contributions of women faculty members. Work in nutrition, home economics, family and consumer science, housing, and family life is of particular interest. We have a sample of a similar book produced in 2007 that can be used as a reference. Interested students should inform Dr. Swearer: [sswearer@unl.edu](mailto:sswearer@unl.edu) and arrangements can be made to connect interested graduate students with the prospective donor.

# Discovery Day Camps at Morrill Hall

Morrill Hall, the Nebraska State Museum on UNL campus, has begun their process of hiring seasonal staff for their summer DISCOVERY DAY CAMPS! Interested students should have at least a year of professional work with youth, the ability to work a regular, Monday-Friday schedule during the summer from May 27-August 4 (some flexibility here), and possess an eagerness to help children discover, create, learn, and have fun.

**The deadline to apply is FEBRUARY 28th**

- Lead Classroom Educator:  
<https://app.joinhandshake.com/stu/jobs/9602657>
- Assistant Seasonal Educator:  
<https://app.joinhandshake.com/stu/jobs/9602634>



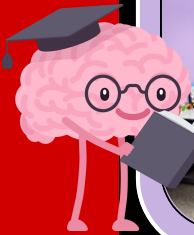
The EDPS Community mourns the passing of Dr. Rick Lombardo, who earned his Ph.D. in the Department of Educational Psychology. His memorial service will be held on Saturday, February 15th and his obituary can be read here: [Obituary | Richard "Rick" Lombardo | Nebraska Today](#)



## Looking for a quiet place to study?



Our student support room is located in TEAC 210. This room is open to anyone who needs a quiet space to work and also includes items for kids, should anyone need to bring their kiddos to campus!



## Why Kind Workplaces Are More Successful

Research suggests that having leaders, managers, and employees who are generous and helpful can boost the bottom line.



**Read about it [HERE!](#)**

## LOOKING FOR A FUN WAY TO DECOMPRESS?

we invite you to join us for:



## an EDPS CRAFTERNOON!

Jules is working in collaboration with the CSPC to bring more opportunities for creativity, fun, and relaxation. This month, we're making postcards! Because who doesn't love receiving snail mail that isn't a bill?



We will supply the post cards and art supplies, but feel free to bring your own pens, pencils, paints, stickers, or whatever you might like to use!



**Friday, Feb. 28th  
2:30-4PM  
RSVP FORTHCOMING**



# Upcoming Office Hours

February 13-19, 2025

**Thurs. February 13: 2-3pm**

**Fri. February 14: No Office Hours**

**Monday, February 17: 10-11am**

**Tuesday, February 18: 11am-12pm**

**Wednesday, February 19: 12-1pm**

Susan Swearer, Ph.D., LP  
Chairperson  
Department of Educational Psychology  
University of Nebraska-Lincoln

## Need to reserve a room?

<https://tinyurl.com/TEACRoomRes>

\*Note: requests must be submitted no later than 48hrs before your reservation request  
**Questions? Ask Zee!**



## Need to meet w/ Jules?

Send them an email to set up an appointment!

\*Note: Jules is unable to meet on Wednesdays



## need to request materials from CSPC?



Microsoft Form Link: <https://go.unl.edu/cspcmaterials>

# Weekly Wednesday

Department of Educational Psychology

## What's Inside:

- 1) Top Stories
- 2) News
- 3) Student Support
- 4) The Week Ahead





# Masters Comprehensive Exam

The deadline to register for the **March MA COMPS** is **FRIDAY, FEBRUARY 28TH** at 4pm. **the exam will take place on MARCH 7th**

**LATE APPLICATIONS WILL NOT BE ACCEPTED.**

To register for the MA COMPS, please visit our website to download your registration form: <https://go.unl.edu/edpscomps>

If you require testing accommodations, you must have accommodations on file with SSD and submit your accommodation paperwork at the same time you submit your **COMPS registration form.**

## LOOKING FOR A FUN WAY TO DECOMPRESS?

we invite you to join us for:



### an EDPS CRAFTERNOON!

Jules is working in collaboration with the CSPC to bring more opportunities for creativity, fun, and relaxation. This month, we're making postcards! Because who doesn't love receiving snail mail that isn't a bill?



We will supply the post cards and art supplies, but feel free to bring your own pens, pencils, paints, stickers, or whatever you might like to use!



Friday, Feb. 28th  
2:30-4PM

RSVP here:

<https://forms.gle/T3HJkifJdJi9UC6Y6>

The EVC office invites you to join a "**Community Conversation on Academic Freedom**," designed to provide support for instructors whose teaching may feel more challenging or complicated in our current cultural and political moment.

### Community Conversation on Academic Freedom

Wednesday, March 5 3:30 - 5 p.m.

Regency Suite, Nebraska Union on City Campus



## School Supply Donation Drive

In March, our DLS student Patricia Cardellini will embark on a humanitarian expedition to Malawi as part of a Program called Leaders in Africa, a global leadership initiative in partnership with Fraternity Without Borders, a Non-Profit Organization that has been in Malawi since 1994. We are excited to share a campaign that we've created to support the community she will be working with!

The mission is to provide education, vocational training, and sustainable opportunities, offering hope and empowerment to refugee women and children facing extreme hardship. The program also provides childcare support, ensuring that children are safe while their mothers work toward a better future. **As part of our collaboration, we are collecting school supplies to help expand the project and support more women and children.**

A wishlist of school supply items is posted in the EDPS office, TEAC 114. Please bring your donations to the office **BY WEDNESDAY, FEBRUARY 26TH!**

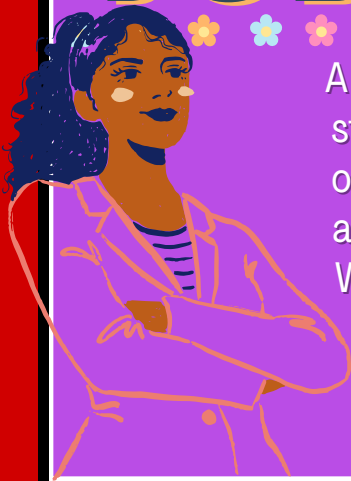


Questions? Please **EMAIL PATRICIA!**



Top Stories

# JOB OPPORTUNITY!!



A CEHS donor and emeriti professor is interested in funding a graduate student for work on a book that captures the history and contributions of women faculty members. Work in nutrition, home economics, family and consumer science, housing, and family life is of particular interest. We have a sample of a similar book produced in 2007 that can be used as a reference. Interested students should inform Dr. Swearer: [sswearer@unl.edu](mailto:sswearer@unl.edu) and arrangements can be made to connect interested graduate students with the prospective donor.

## BUROS GRA Position Available!

The Buros Center for Testing anticipates the availability of one graduate assistantship to assist in the preparation of materials for the publication of various Buros Center products including ***The Mental Measurements Yearbook, Tests in Print, and Pruebas Publicadas en Español: An Index of Spanish Tests in Print***. Very careful, accurate work is a critical requirement for the position, which will require 19.6 hours of work per week. An assistantship is available for summer 2025 and for the 2025-2026 academic year. Preference for the summer session will be given to students who are also applying for the academic year.

**More information, including the full job posting and how to apply, can be found on our WEBSITE.**



## CALL FOR UCARE APPLICATION REVIEWERS!

Reviewing UCARE applications is a wonderful way for graduate students to learn about research proposals and the broad array of research topics and teams at UNL. Reviewer service is also a professional development experience that individuals can put on their CVs and resumes. Reviewers will be assigned no more than 15 applications in their field of expertise (or a closely related field) and will be provided with review training materials.



**TO LEARN MORE OR APPLY, VISIT:**

**[HTTPS://NEWSROOM.UNL.EDU/ANNOUNCE/ACADEMICADVISING/18314/98771](https://newsroom.unl.edu/announce/academicadvising/18314/98771)**

## Passionate about happiness and well-being? Join EDPS 320: Happiness and Well-being through Positive Psychology as a group facilitator this spring!

As a group facilitator, you will:

- ♥ Lead small group discussions on topics like kindness, self-compassion, and mindfulness
- ♥ Facilitate 8 sessions on Fridays (March 14 – May 9) at 10:30 - 11:20 AM and/or 11:30 - 12:20 PM
- ♥ Receive a facilitation manual and pre-facilitation meeting



**Gain leadership experience, deepen your knowledge, and make a difference! Reach out to Chelsea Walker ([cwalker36@unl.edu](mailto:cwalker36@unl.edu)) if you are interested!**

## MEAL KIT MONDAY



## HUSKER PANTRY

Available on select Mondays each month starting in February and continuing through April at the East Campus Rec and Wellness Center, Meal Kit Monday packages include ingredients and a recipe card to prepare a full meal in less than an hour and serve up to four individuals. The \$25 pre-packed kits make meal prep easier for students and members of the campus community.



**LEARN MORE HERE**

Husker Pantry at the University of Nebraska-Lincoln supports students facing food and hygiene insecurity. Open to all enrolled students, it offers non-perishable food and hygiene products through a simple online ordering system. Community contributions keep the pantry functioning.



**LEARN MORE HERE**



## OGS STUDENT RESEARCH DAYS

The Office of Graduate Studies is hosting **STUDENT RESEARCH DAYS** poster sessions in the Union on Wednesday, April 16th from 3-5pm. This is a great opportunity for students who are unable to attend or travel to larger conferences who want to practice their research presentation skills! There is also a poster competition with travel grant award money up for grabs! New collaborators at the NEAR center this semester would love to provide assistance with these types of research projects!

**REGISTRATION TO PRESENT YOUR POSTER IS NOW OPEN!!**

**STUDENTS MUST REGISTER BY MARCH 14TH**

To learn more and to register, visit:

<https://research.unl.edu/springresearchdays/graduate-poster-session-and-creative-exhibition/>







# Upcoming Office Hours

February 20-26, 2025

**Thurs. February 20: 11am-12pm**

**Fri. February 21: NO OFFICE HOURS**

**Monday, February 24: 1-2pm**

**Tuesday, February 25: 2-3pm**

**Wednesday, February 26: 10-11am**

Susan Swearer, Ph.D., LP  
Chairperson  
Department of Educational Psychology  
University of Nebraska-Lincoln

## Need to reserve a room?

<https://tinyurl.com/TEACRoomRes>

\*Note: requests must be submitted no later than 48hrs before your reservation request  
**Questions? Ask Zee!**



## Need to meet w/ Jules?

Send them an email to set up an appointment!

\*Note: Jules is unable to meet on Wednesdays



## need to request materials from CSPC?



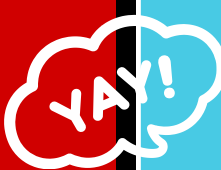
# Weekly Wednesday

Department of Educational Psychology

## What's Inside:

- 1) Top Stories
- 2) Funding Opportunities
- 3) Student Support & Outreach
- 4) NASP Photos
- 5) The Week Ahead





# Did you hear the news?

Dr. Isabella Starling Alves will be joining us this August as our new DLS Faculty Member!

We are so excited to have her join us!



# Masters Comprehensive Exam (MA COMPS) next exam: MARCH 7th

The deadline to register for the March MA COMPS is **THIS FRIDAY, FEBRUARY 28TH at 4pm.**

**LATE APPLICATIONS WILL NOT BE ACCEPTED.**

To register for the MA COMPS, please visit our website to download your registration form: <https://go.unl.edu/edpscomps> Please send your completed registration to Jules via email. Registration is not completed until all parties have signed your registration form.

Application received after 4pm on Friday will not be accepted, and you will not be able to register for the COMPS until the next time they are offered in June.

If you require testing accommodations, you must have accommodations on file with SSD and submit your accommodation paperwork at the same time you submit your COMPS registration form.

Join us THIS FRIDAY for our

# EDPS CRAFTERNOON!



Jules is working in collaboration with the CSPC to bring more opportunities for creativity, fun, and relaxation in our department. This month, WE'RE MAKING POSTCARDS! Because who doesn't love receiving snail mail that isn't a bill?



We will supply the postcards and art supplies, but feel free to bring your own pens, pencils, paints, stickers, or whatever you might like to use!



Friday, Feb. 28th  
RSVP here: 2:30-4PM

<https://forms.gle/t3HJKifJdJi9UC6Y6>

\*NOTE: the department is unable to provide postage stamps



# BUROS GRA Position Available!

The Buros Center for Testing anticipates the availability of one graduate assistantship to assist in the preparation of materials for the publication of various Buros Center products including **The Mental Measurements Yearbook, Tests in Print, and Pruebas Publicadas en Español: An Index of Spanish Tests in Print**. Very careful, accurate work is a critical requirement for the position, which will require 19.6 hours of work per week. An assistantship is available for summer 2025 and for the 2025-2026 academic year. Preference for the summer session will be given to students who are also applying for the academic year.

**More information, including the full job posting and how to apply, can be found on our WEBSITE.**



## Graduate Students,

Please note that verbal offers of assistantships are **NOT** guaranteed positions. Graduate assistantships are not guaranteed until you have a signed contract.

## GSA TRAVEL AWARD PROGRAM (GTAP)



Looking for travel funding to present your original work at an academic conference, take workshops, and attend showcases? **CHECK OUT THE GSA TRAVEL AWARD PROGRAM!** More information can be found at the following website: <https://newsroom.unl.edu/announce/gradstudies/18489/98497>

**POSITION AVAILABLE: Nebraska Athletics - Community Relations Student Assistant** → →



**APPLY HERE!!**



# JOB OPPORTUNITY!!



A CEHS donor and emeriti professor is interested in funding a graduate student for work on a book that captures the history and contributions of women faculty members. Work in nutrition, home economics, family and consumer science, housing, and family life is of particular interest. We have a sample of a similar book produced in 2007 that can be used as a reference. Interested students should inform Dr. Swearer: [sswearer@unl.edu](mailto:sswearer@unl.edu) and arrangements can be made to connect interested graduate students with the prospective donor.



# NO LIMITS

HOSTED BY UNL'S WOMEN & GENDER STUDIES PROGRAM

## STUDENT RESEARCH CONFERENCE *Transforming Lives, Gender, and Justice*

### "Finding Me: Finding We"



**Keynote Speaker: Ryan Sallans,**  
UNL Alum and Author

**11am @ The Swanson  
Auditorium, Nebraska Union**

Ryan Sallans is a speaker, writer, and consultant specializing in sex, gender, and healthcare. Over the past 20 years, he has served corporations, healthcare institutions, federal agencies, universities, and communities. An internationally utilized gender subject matter expert, Ryan interweaves personal narrative storytelling with scientific research and cultural studies. His work is designed to help audiences and individuals break down the barriers that gender presents us all.

In order to keep this event accessible to all participants, No Limits charges no conference registration fee. It is entirely supported by donations from academic departments and units within the University of Nebraska and the fundraising efforts of student organizations.

**To register, visit**

**<https://wgs.unl.edu/research/no-limits-conference/>**

## Student Outreach & Support (SOS)

Our SOS group will meet every other Monday at 9:30am via Zoom. If you would like to join a Zoom meeting, please email [DEMAC@unl.edu](mailto:DEMAC@unl.edu) prior to the meeting to discuss what you'd like to talk about!

Spring Meeting Schedule



**NEXT MEETING:**

**March 10th @ 9:30am**

**<https://unl.zoom.us/j/91804758989>**

Passionate about happiness and well-being? Join EDPS 320: Happiness and Well-being through Positive Psychology as a group facilitator this spring!

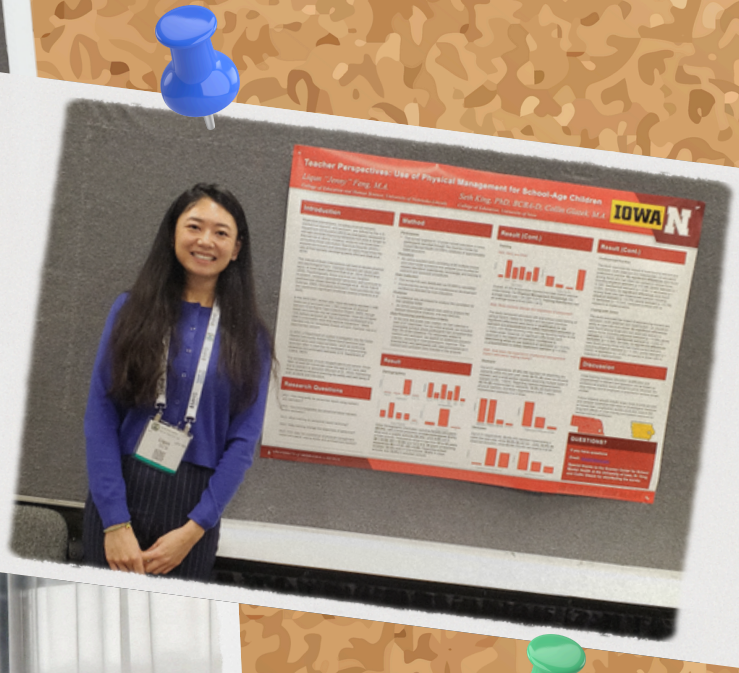
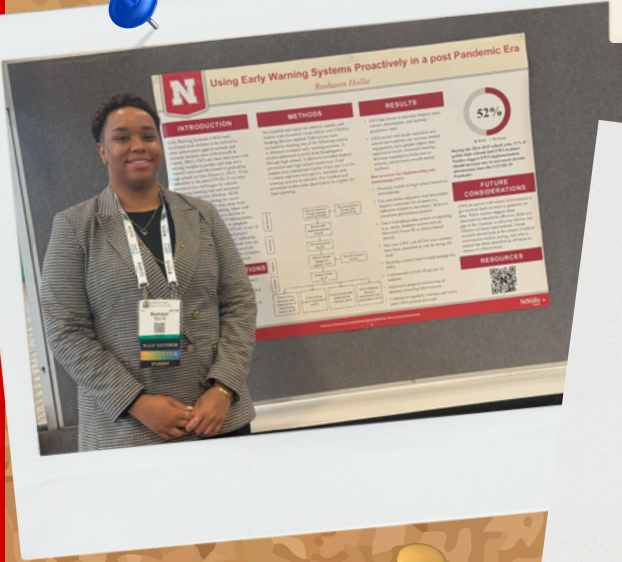
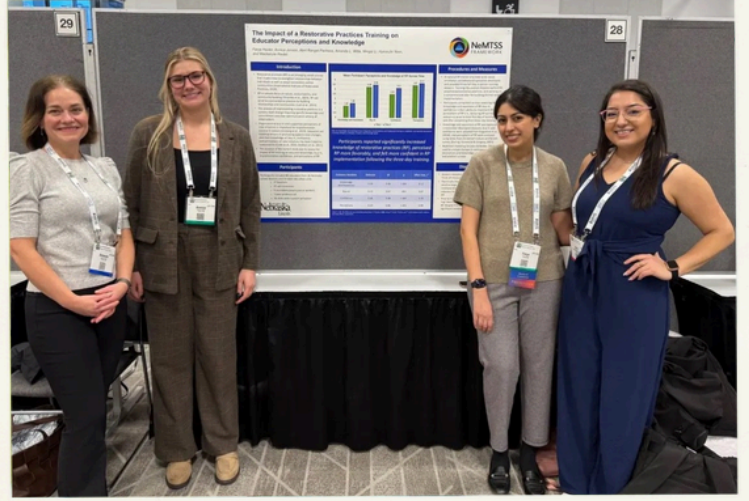
As a group facilitator, you will:

- ♥ Lead small group discussions on topics like kindness, self-compassion, and mindfulness
- ♥ Facilitate 8 sessions on Fridays (March 14 – May 9) at 10:30 - 11:20 AM and/or 11:30 - 12:20 PM
- ♥ Receive a facilitation manual and pre-facilitation meeting



**Gain leadership experience, deepen your knowledge, and make a difference!**  
**Reach out to Chelsea Walker ([cwalker36@unl.edu](mailto:cwalker36@unl.edu)) if you are interested!**

# NASP 2025



Thank you Sungeun for  
sending these photos!



# Upcoming Office Hours

February 27-March 5, 2025

**Thurs. February 27: 2-3pm**

**Fri. February 28: NO OFFICE HOURS**

**Monday, March 3: 2-3pm**

**Tuesday, March 4: 3-4pm (via Zoom)**

**Wednesday, March 5: 10-11am**

Susan Swearer, Ph.D., LP  
Chairperson  
Department of Educational Psychology  
University of Nebraska-Lincoln

## Need to reserve a room?

<https://tinyurl.com/TEACRoomRes>

\*Note: requests must be submitted no later than 48hrs before your reservation request  
**Questions? Ask Zee!**



## Need to meet w/ Jules?

Send them an email to set up an appointment!

\*Note: Jules is unable to meet on Wednesdays



## need to request materials from CSPC?

