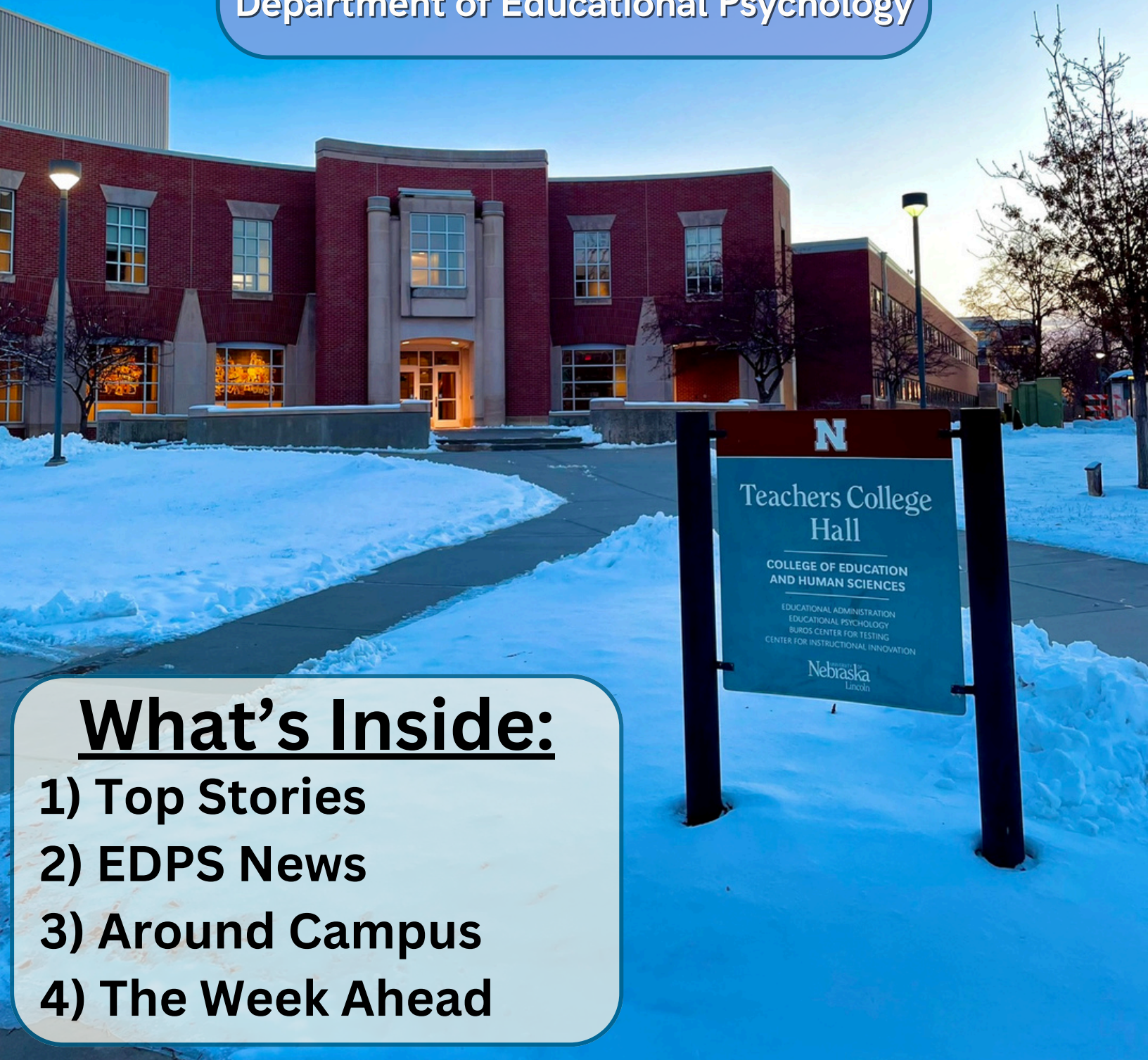


Weekly Wednesday

Department of Educational Psychology

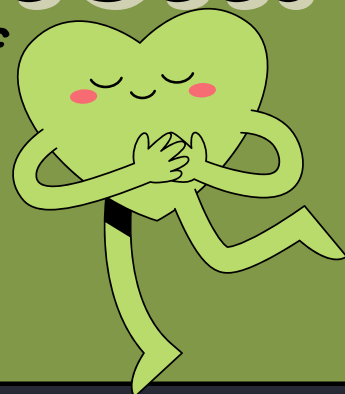
What's Inside:

- 1) Top Stories
- 2) EDPS News
- 3) Around Campus
- 4) The Week Ahead



WELCOME BACK!

I hope your break was fantastic! The start of the semester is underway and classes are in session. I wish you the best of luck this semester as you continue to work towards your goals and dreams! YOU CAN DO IT!!!



Already needing another break?

MONDAY IS MLK DAY, AND UNL WILL BE CLOSED. CLASSES WILL NOT MEET AND OFFICES WILL NOT BE OPEN. ENJOY YOUR LONG WEEKEND!



GRADUATING IN MAY?



DON'T FORGET! IN ORDER TO GRADUATE, YOU MUST FILL OUT AN APPLICATION TO GRADUATE PRIOR TO THE DEADLINES ESTABLISHED BY OGS.

TO APPLY FOR GRADUATION, FILL OUT THE APPLICATION FOR GRADUATION IN MYRED.

MASTERS STUDENTS: the application becomes available in MyRed the semester following approval of your Memorandum of Courses.

PHD STUDENTS: As a doctoral student, you will also be required to complete the Hooding Participation information included in the application process.

THE DEADLINE TO APPLY FOR MAY GRADUATION IS

JANUARY 23, 2026

OGS STEPS TO DEGREE COMPLETION:

<https://graduate.unl.edu/academics/program-steps/>



Need to reserve a room?

Please email Zee with your request!

When emailing Zee to request a room, please include the following information



- Date of reservation
- Start time & end time for meeting
- Number of participants
- Technical needs
- Event Title



Note: Room reservation requests may take 1-2 business days to process. If you have any questions, please email or see Zee!

Check your TEAMS access!

Post-migration, you may have lost access to some of your TEAMS channels. If you think this is happening to you, please talk to your program director to be added back on to your program's TEAMS page!

Click the button below to ensure you are on the EDPS Faculty, Staff, and Students TEAMS channel!



CLICK HERE



A few folks have asked about when EDPS assistantships will be posted. All funding announcements will be shared via Weekly Wednesday and posted to our website [HERE](#). Our goal is to have all open positions advertised by the end of February! Keep checking in on the webpage above for more information about available assistantships within EDPS.

Funding Opportunities:

WOMEN INVESTING IN NEBRASKA (WIN)

This opportunity seeks to fund projects that meet at least one of these criteria:

1. Does this respond to an urgent and critical need?
2. Is this a bold new venture?
3. Does this offer a new approach to an ongoing problem?



Full proposals may be submitted by invitation only. To submit your letter of inquiry, visit:

<https://womeninvestinginnebraska.org/grants/letter-of-inquiry/>

DR. CHRISTINE BLASEY FORD GRANT

Sponsored by APA Division 56: Division of Trauma Psychology.

This opportunity will support graduate students and early-career researchers conducting innovative work, focusing on the understanding, prevention, and/or treatment of the consequences of exposure to traumatic events, such as sexual assault, sexual harassment, and/or rape.



<https://ampsychnfdn.org/funding/blasey-ford/>

OGS MILESTONES INFORMATION SESSION

WITH DR. EVA BACHMAN

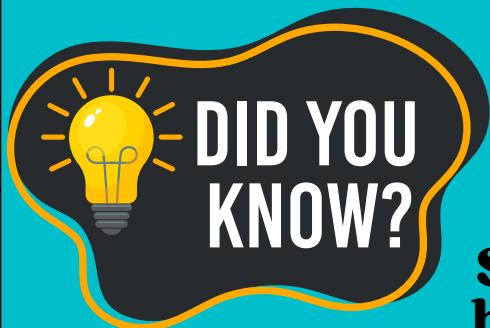
DR. EVA BACHMAN, DIRECTOR OF GRADUATE STUDENT SUPPORT AND ASSOCIATE REGISTRAR, WILL HOST A MILESTONES PRESENTATION. THIS EVENT IS OPEN TO GRADUATE STUDENTS, STAFF, AND FACULTY.

THIS ZOOM PRESENTATION WILL DISCUSS THE MAJOR MILESTONES ON THE JOURNEY FOR MASTERS AND DOCTORAL STUDENTS AS WELL AS OTHER IMPORTANT INFORMATION SUCH AS PAPERWORK SUBMISSION. BECAUSE IT IS OPEN TO BOTH LEVELS OF STUDENTS, THE PRESENTATION WILL FIRST ADDRESS MASTERS STUDENTS AND THEN DOCTORAL FOLLOWED BY A COMBINED BRIEF SECTION ON THESIS/DISSERTATION TASKS AND EXPECTATIONS.

JANUARY 29TH
12-1PM



REGISTER HERE!



The Office of Graduate Studies has published their spring workshop schedule! These workshops are free to attend and cover a number of topics relating to what it means to be a Graduate Student at UNL.

See the full list of events here:
<https://go.unl.edu/ogsworkshops1261>



Upcoming Office Hours

January 15-21, 2026

Thurs. Jan. 15: 9-10am

Fri. Jan. 16: 1-2pm

Mon. Jan. 19: 1-2pm

Tues. Jan. 20: 9-10am

Wed. Jan. 21: 12-1pm

Susan Swearer, Ph.D., LP
Chairperson
Department of Educational Psychology
University of Nebraska-Lincoln



NEED TO MEET W/ JULES?

If you would like to meet with Jules, you must send them an email to set up an appointment.

APPOINTMENTS AVAILABLE IN-PERSON AND VIA ZOOM

*Note: Jules is unable to meet on Wednesdays

EMAIL JULES
JMEYERS19@UNL.EDU

Want to reserve a room?

Email Zee!

Please include the following information with your request:

- Date of event
- Start & end time
- Number of participants
- Technical needs
- Event title

*Note: please submit your request no later than 1 business day before your reservation!



need to request materials from CSPC?



Microsoft Form Link: <https://go.unl.edu/cspcmaterials>

