

November 13, 2024

VOLUME 136

Weekly Wednesday

Department of Educational Psychology

What's Inside:

- 1) Top Stories
- 2) Announcements & News
- 3) Diversity, Equity, & Inclusion
- 4) Clinic Corner
- 5) The Week Ahead

N

Teachers College
Hall

COLLEGE OF EDUCATION
AND HUMAN SCIENCES

EDUCATIONAL ADMINISTRATION
EDUCATIONAL PSYCHOLOGY
BURKS CENTER FOR TESTING
CENTER FOR INSTRUCTIONAL INNOVATION

Nebraska
Lincoln

EDPS Super Swap

winter warmth edition

NEXT WEEK!

You have one more week to drop off donations in TEAC 114!

All clothing and housewares must be free of stains, rips, tears, or any major damage.

All donations must be dropped off to TEAC 114 no later than Wednesday, November 20th

If you are unable to donate by Wednesday, please email Jules to set up a drop off time for your items.

SEE BELOW FOR A LIST OF ACCEPTABLE DONATIONS

YES!

- sweaters
- scarves
- winter coats
- cardigans
- jeans
- gloves
- boots
- new socks
- long trousers
- sturdy sneakers
- bookshelves
- chairs
- couches
- side tables
- blankets
- dish sets

*Belts, shoes, and accessories are welcome, as long as they are in good condition.

NO!

- tank tops
- shorts
- undergarments
- sundresses
- sandals
- used socks
- "Summer Clothes"

Lincoln Community Care & Everett Free Grocery Program Donations

In addition to our regular Super Swap collections, we are also asking for donations for LCC & EFGP. These programs provide free food, hygiene, and other care items directly into the hands of those who need them.

Specifically, we are asking for donations of the following items:

- **Cold Weather Gear**
 - Hats, scarves, heavy coats, gloves, etc.
- **Blankets**
- **Lightly used camping gear**
 - Sleeping bags, tents, etc.
- **Hand Warmers**

The items collected will be distributed directly to the community, free of charge.



LCC



To learn more about LCC & EFGP, scan the QR codes!



EFGP

If you are unsure whether your item(s) can be donated, please email Jules and they will assist you!

**The EDPS Super Swap will be held:
NOVEMBER 22nd | 10am-3pm | TEAC 202**

SPED 803: Executive Function

Spring 2025

Department of Special Education & Communication Disorders

Course Description:

Theories of executive function (EF) and its development. Links between EF and developmental outcomes. Executive function in special populations. Considerations for including executive function in educational and psychological research.



This is a discussion-based course. There will be some brief lectures, but the purpose of these lectures is to guide and facilitate critical thinking & discussion. Students will be expected to lead group discussions.

VIRTUAL/IN-PERSON & CLASS DATE/TIME ARE FLEXIBLE

Interested? Graduate & Doctoral students should contact Dr. Susan Loveall-Hague (sloveall-hague2@unl.edu) for more information on how to register for this course.

Planning end-of-semester events?

here are some things you need to know:



Jules will be out of the office for most of December. Zee & Kellan have graciously taken on some tasks for Jules for the duration of their absence!

1

Food for on-campus events **must** come from an Approved Caterer. The list of Approved Caterers is updated at the beginning of each month. Please bookmark **THIS WEBPAGE** to access the most updated list.

FACULTY: Please work with KELLAN on all catering requests & reconciliation!

2

Need to use the HyVee card?

COORDINATE WITH ZEE!

Be on the lookout for an email with more information!

3

Need to book a room? Please reach out to Zee ASAP!

Room reservations fill up quickly for end of semester events, so the sooner you reach out to Zee, the better!



IMPACTED PARKING ON CAMPUS: STATE HIGH SCHOOL FOOTBALL CHAMPIONSHIPS



If you have a valid parking permit and do not have a Permit Event Sticker:

- Send an email to UNLPTS@unl.edu from your UNL email account and request the event sticker.
- It will be mailed to your campus address
- NOTE: EMAIL REQUEST MUST BE RECEIVED BY NOVEMBER 18 FOR CAMPUS MAIL DELIVERY OF STICKER BEFORE HIGH SCHOOL FOOTBALL CHAMPIONSHIP GAMES.

OR

- Go to Parking and Transit Services, 625 Stadium Drive.
- Request and receive the sticker, at no cost.
- Display the Permit Event Sticker on the vehicle inside front windshield, lower driver's side.

The Nebraska School Activities Association State Football Championship Finals will be played in Memorial Stadium on Monday, November 25, and Tuesday, November 26. These games will have a direct impact on campus parking.

Vehicles with parking permits must display a Permit Event Sticker for access to permit parking areas during events, including the football championships. The Permit Event Sticker, available at no cost, verifies the vehicle permit in the License Plate Recognition System. Garage permits with hangtags do not need the sticker; the hangtag serves as permit verification.



Next DEMAC Meeting November 18th @ 1pm

Visit <https://go.unl.edu/demacform> to leave feedback!

Want to join the meeting? Send an email to demac@unl.edu and let them know you're coming!

Zoom Link: 
<https://unl.zoom.us/j/92407153419>



WEEKLY WINS-DAY



School Psychology
2024



THE SCHOOL PSYCHOLOGY PROGRAM HAD
A GREAT DAY AT THE OMAHA ZOO. THEY
HAVE LOVINGLY TITLED THE OUTING:
"SUE AT THE ZOO!"



Jules had a big week!



They got a
new tattoo!

beep beep ribby ribby!
Jules got a new car!
It feels so good
to have reliable
transportation
again!!!

send bumper sticker
recommendations!!!!



(yes, they bought this sticker)



introducing: Kenneth the Kia!



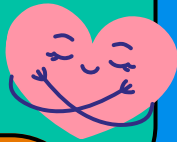
HAPPY NATIONAL SCHOOL PSYCHOLOGY WEEK!



2025 Health Equity Conference



Each year, MHDl hosts a conference to create space for students, researchers, community health professionals, policymakers, and organizations to come together and share strategies and resources for advancing health equity in Nebraska and beyond. The 2025 Health Equity Conference will be held on Friday, February 28, 2025, at the Nebraska Innovation Campus Conference Center in Lincoln, Nebraska. Attendees can look forward to a variety of health equity speakers, workshops, networking opportunities, and research sharing.



February 28, 2025

The event is **FREE** and open to the public.

To learn more, visit: <https://mhdI.unl.edu/2025-health-equity-conference>



**need to request
materials
from CSPC?**



Microsoft Form Link:
<https://go.unl.edu/cspcmaterials>



Upcoming Office Hours

November 14-20, 2024

November 14-15

NO OFFICE HOURS

November 18-20

Please email Sue to set up an appointment.

Susan Swearer, Ph.D., LP

Chairperson

Department of Educational Psychology
University of Nebraska-Lincoln

Need to reserve a room?

<https://tinyurl.com/TEACRoomRes>

*Note: requests must be submitted no later than 48hrs before your reservation request

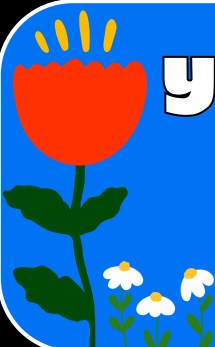
Questions? Ask Zee!



NEED TO MEET WITH JULES?

Please email them to set up an appointment!

**NOTE: JULES IS UNABLE TO MEET ON WEDNESDAYS*



you have not yet become

all that you will be

keep growing! i believe in you!

