

November 6, 2024

VOLUME 135

Weekly Wednesday

Department of Educational Psychology

What's Inside:

- 1) Top Stories
- 2) Announcements & News
- 3) Hallo-winners
- 5) November Happiness
- 6) Clinic Corner
- 7) The Week Ahead

N

Teachers College
Hall

COLLEGE OF EDUCATION
AND HUMAN SCIENCES

EDUCATIONAL ADMINISTRATION
EDUCATIONAL PSYCHOLOGY
BURKS CENTER FOR TESTING
CENTER FOR INSTRUCTIONAL INNOVATION

Nebraska
Lincoln

DEMAC & CSPC De-Stress Event

Need a safe space to decompress?

Want to pet dogs, color, and spend time with friends?



On Thursday, November 7th, DEMAC + CSPC will host a de-stress event in the clinic. All are welcome to join!!



WHAT: Painting, coloring, games, therapy dogs, Kellan's cat Lemon, & ice cream!

WHERE: CSPC (TEAC 49)

WHEN: Thurs. Nov. 7 from 3:30-5pm



TO RSVP, CLICK HERE!



Dr. Shilpa Pandit, a Fullbright scholar from India is visiting UNL in November.

She will be presenting a lecture at UNL on November 11th from 1-4pm in CPEH 313.

The Indian Psychology of Emotions – Leveraging Emotions Towards Well-Being

Join Dr. Shilpa Pandit, Associate Professor at Ahmedabad University, for a talk exploring an Indian perspective on emotions and their role in well-being. Dr. Pandit will delve into traditional Indian texts, such as Ayurveda, Yoga, and Vedanta, to present a holistic view of affect as a powerful tool for spiritual growth and self-discovery. This insightful discussion will shed light on key gaps in mainstream psychological theories and open new avenues for experiential learning and creativity. Don't miss this chance to expand your understanding of emotions within a globally relevant psychology.



Questions? Email Om Joshi

IMPACTED PARKING ON CAMPUS: STATE HIGH SCHOOL FOOTBALL CHAMPIONSHIPS

The Nebraska School Activities Association State Football Championship Finals will be played in Memorial Stadium on Monday, November 25, and Tuesday, November 26. These games will have a direct impact on campus parking.

Vehicles with parking permits must display a Permit Event Sticker for access to permit parking areas during events, including the football championships. The Permit Event Sticker, available at no cost, verifies the vehicle permit in the License Plate Recognition System.

Garage permits with hangtags do not need the sticker; the hangtag serves as permit verification.

If you have a valid parking permit and do not have a Permit Event Sticker:

- Send an email to UNLPTS@unl.edu from your UNL email account and request the event sticker.
- It will be mailed to your campus address
- NOTE: EMAIL REQUEST MUST BE RECEIVED BY NOVEMBER 18 FOR CAMPUS MAIL DELIVERY OF STICKER BEFORE HIGH SCHOOL FOOTBALL CHAMPIONSHIP GAMES.
- OR
- Go to Parking and Transit Services, 625 Stadium Drive.
- Request and receive the sticker, at no cost.
- Display the Permit Event Sticker on the vehicle inside front windshield, lower driver's side.





Feeling incredibly overwhelmed? Same, bestie. Please take care of yourselves, and take note of these mental health resources below:
The Trevor Project: <https://www.thetrevorproject.org/resources/guide/coping-with-intense-emotions-around-the-election/>

UNL CAPS: <https://caps.unl.edu/election-response>

Prevention Health: <https://www.prevention.com/health/mental-health/a62801306/how-to-deal-with-election-anxiety-stress/>

UMICH CAPS: <https://caps.umich.edu/content/manage-election-related-stress-information>



2024-2025 Methodology Applications Series Ensuring Data Integrity Through Ongoing Monitoring and Maintenance



featuring Jungwon Eum and Amanda Prokasky

Data integrity is essential to producing reliable and valid findings. This presentation will discuss strategies for ensuring data integrity through continuous maintenance and monitoring practices specifically geared towards researchers. It will highlight the importance of establishing thorough data management plans that include regular data validation, monitoring for inconsistencies and using consistent review processes to identify potential errors. By implementing systematic checks, researchers can ensure the accuracy of datasets throughout the research lifecycle, from data collection to analysis.

November 8th
12:00-1:30pm
CPEH 312



The EDPS Super Swap is only a couple of weeks away!

Donations can be dropped off in TEAC 114 from now until November 20th

Not sure what you can donate? A list of acceptable donations can be found here:

<https://go.unl.edu/superswapfall2024>

Please bring your donations directly to TEAC 114.

If you are unsure whether your items qualify for donation, please send Jules an email and they will happily assist you!

Want to get involved but don't have anything to donate? Jules needs help sorting and organizing items for the event, as well as help setting up day-of the event! If you would like to lend a hand, send Jules an email for more information about how and when you can help with this event!



The EDPS Super Swap will be held:

NOVEMBER 22nd | 10am-3pm | TEAC 202

**A huge thank you to all who participated
in our EDPS Costume Contest!!!**



but who was the winner..?

Hallo-winners



OUR WINNER!!!

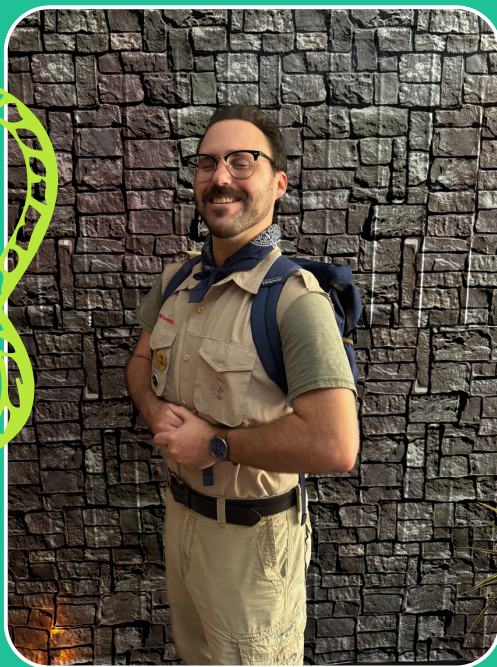
Genevieve, we LOVED your Jellyfish costume! We are so in awe of the fact that you MADE this hat!!!! CONGRATULATIONS on being our winner!!!



OUR RUNNERS-UP

Jack Riley

boy scout



Amelia Miramonti

KO Barbie



Jules will be emailing y'all shortly to discuss what you've won!
THANK YOU FOR PARTICIPATING!

YOU ARE WHAT MAKES THE WORLD A BETTER PLACE

November Happiness Calendar

this month, look for the good in the world

SUNDAY	MONDAY	TUESDAY	WEDNESDAY	THURSDAY	FRIDAY	SATURDAY
 Greater Good Science Center ggsc.berkeley.edu greatergood.berkeley.edu				1 Watch an uplifting TV show.		2 Breathe out slowly and mindfully.
3 Gather in community for support and solidarity.	4 Talk with young people about politics.	5 Tune out the voices that sow division.	6 Hum to soothe your nervous system.	7 Take a walk and marvel at nature.	8 Connect with others in your grief.	9 Try to forgive yourself.
10 Recognize that it's normal to feel lonely.	11 Treat yourself with kindness.	12 Find a coach or therapist, if you need one.	13 Advocate for yourself at the doctor.	14 Be more honest in your relationship.	15 Appreciate your life by imagining how it could have gone differently.	16 How empathic are you? Take our quiz to find out.
17 Try to let go of resentment.	18 Look for the good in humanity.	19 Be playful at work.	20 Listen with humility and curiosity.	21 Attend our online gratitude event today!	22 Be a source of positivity on social media.	23 Speak other people's language.
24 Think critically about information you consume.	25 Welcome diversity at work.	26 Solve conflicts by talking it out.	27 Be a model of healthy technology use.	28 Write a letter of gratitude to someone.	29 Look beyond your own worldview.	30 See the strengths and uniqueness of others.



practical applications to see (& be) the good in the world:

make a playlist for a friend learn a new language

talk on the phone with a long-distance love take a walk through the park with a loved one

leave an encouraging comment on social media

recognize and appreciate the person you are becoming

cook your favorite meal let yourself cry if you need to

speak openly and honestly about your emotions



Weekly Wins-day



CONGRATULATIONS to Jennifer Schlueter for earning a Spanish-English translation certification from the University of Massachusetts Boston. The course work focused on techniques and strategies crucial to the translation process. "The readings, discussions, and hands-on practice work helped improve my understanding of the process and gave me more confidence in the work I do for the Buros Center for Testing," Schlueter said. Schlueter was hired in August 2010 as assistant editor with a primary responsibility to develop and edit Pruebas Publicadas en Español: An Index of Spanish Tests in Print (PPE), a new initiative for the Center at the time. "I'm proud that the work we've done with PPE over the past 14 years has helped increase awareness about the availability of tests that can be used with Spanish speakers," she said. "We hear from teachers and clinicians that PPE is a great resource for helping understand what options are available when they are looking for tests to use with their Spanish-speaking clients and students."

Free APA Science Training Webinar: Indigenous Methodologies and Assessment

Researchers and practitioners will share perspectives and experience with regard to assessment methodological research and practice with and for Indigenous Peoples, and why consideration and use of Indigenous Methodologies are important. The moderator and presenters will reference APA's Apology to Peoples of Color and the Apology to First Peoples in the United States, the historical development and applications of assessment with Indigenous Peoples on Turtle Island and the critical need for moving forward in a good way in assessment research and practice with relevant Indigenous Methodologies as appropriate. Issues of contextual/community/individual relevance of assessment method, cultural contextualization in psychological evaluations, data and Tribal sovereignty will be considered with insights regarding Indigenous Methodologies in development and application of assessment tools drawing from varied situations including but not limited to neuro-psychology, suicide risk, and quality of life assessments in and outside of Tribal First Nations.

November 14 | 12-1:30pm | Via Zoom

To register or learn more, visit:

https://apa-org.zoom.us/webinar/register/WN_tjVLQfOPS3Gv40Rx56TJ6Q#/registration

School Psychology Anti-Racism UNconference

An UNconference is a participant-driven gathering that seeks to dismantle hierarchical structures and co-create knowledge and resources.

We hope to uproot school psychological practices that perpetuate systems of racism and oppression. You, your ideas, and your work and your contribution are VITAL to making this happen. UNconferences are active—you are signing up to attend, participate, and possibly even facilitate some of the discussions.

Nov. 17th | 11am-4pm | Webinar

CLICK HERE TO REGISTER & LEARN MORE!

2024 UNconference

interactive
NO COST
anti-oppression



Sunday
17 Nov

DIVISION of SCHOOL PSYCHOLOGY PRESENTS
UPROOTING SCHOOL PSYCHOLOGY

NEED TO REQUEST MATERIALS FROM CSPCG?

Microsoft Form Link:

<https://go.unl.edu/cspcmaterials>





Upcoming Office Hours

November 7-13, 2024

Thurs. Nov. 7: 9-10am

Fri. Nov. 8: 2-3pm (via Zoom)

Mon. Nov. 11: 3-4pm

Tues. Nov. 12: 10-11am

Wed. Nov. 13: 12-1pm

Susan Swearer, Ph.D., LP
Chairperson
Department of Educational Psychology
University of Nebraska-Lincoln

Need to reserve a room?

<https://tinyurl.com/TEACRoomRes>

*Note: requests must be submitted no later than 48hrs before your reservation request

Questions? Ask Zee!



NEED TO MEET WITH JULES?

Please email them to set up an appointment!

**NOTE: JULES IS UNABLE TO MEET ON WEDNESDAYS*

YOU ARE LOVED

November 13, 2024

VOLUME 136

Weekly Wednesday

Department of Educational Psychology

What's Inside:

- 1) Top Stories
- 2) Announcements & News
- 3) Diversity, Equity, & Inclusion
- 4) Clinic Corner
- 5) The Week Ahead

N

Teachers College
Hall

COLLEGE OF EDUCATION
AND HUMAN SCIENCES

EDUCATIONAL ADMINISTRATION
EDUCATIONAL PSYCHOLOGY
BURKS CENTER FOR TESTING
CENTER FOR INSTRUCTIONAL INNOVATION

Nebraska
Lincoln

EDPS Super Swap

winter warmth edition

NEXT WEEK!

You have one more week to drop off donations in TEAC 114!

All clothing and housewares must be free of stains, rips, tears, or any major damage.

All donations must be dropped off to TEAC 114 no later than Wednesday, November 20th

If you are unable to donate by Wednesday, please email Jules to set up a drop off time for your items.

SEE BELOW FOR A LIST OF ACCEPTABLE DONATIONS



YES!

- sweaters
- scarves
- winter coats
- cardigans
- jeans
- gloves
- boots
- new socks
- long trousers
- sturdy sneakers
- bookshelves
- chairs
- couches
- side tables
- blankets
- dish sets

*Belts, shoes, and accessories are welcome, as long as they are in good condition.



NO!

- tank tops
- shorts
- undergarments
- sundresses
- sandals
- used socks
- "Summer Clothes"

Lincoln Community Care & Everett Free Grocery Program Donations

In addition to our regular Super Swap collections, we are also asking for donations for LCC & EFGP. These programs provide free food, hygiene, and other care items directly into the hands of those who need them.

Specifically, we are asking for donations of the following items:

- **Cold Weather Gear**
 - Hats, scarves, heavy coats, gloves, etc.
- **Blankets**
- **Lightly used camping gear**
 - Sleeping bags, tents, etc.
- **Hand Warmers**

The items collected will be distributed directly to the community, free of charge.



LCC



To learn more about LCC & EFGP, scan the QR codes!



EFGP

If you are unsure whether your item(s) can be donated, please email Jules and they will assist you!

**The EDPS Super Swap will be held:
NOVEMBER 22nd | 10am-3pm | TEAC 202**

SPED 803: Executive Function

Spring 2025

Department of Special Education & Communication Disorders

Course Description:

Theories of executive function (EF) and its development. Links between EF and developmental outcomes. Executive function in special populations. Considerations for including executive function in educational and psychological research.



This is a discussion-based course. There will be some brief lectures, but the purpose of these lectures is to guide and facilitate critical thinking & discussion. Students will be expected to lead group discussions.

VIRTUAL/IN-PERSON & CLASS DATE/TIME ARE FLEXIBLE

Interested? Graduate & Doctoral students should contact Dr. Susan Loveall-Hague (sloveall-hague2@unl.edu) for more information on how to register for this course.

Planning end-of-semester events?

here are some things you need to know:



Jules will be out of the office for most of December. Zee & Kellan have graciously taken on some tasks for Jules for the duration of their absence!

1

Food for on-campus events **must** come from an Approved Caterer. The list of Approved Caterers is updated at the beginning of each month. Please bookmark **THIS WEBPAGE** to access the most updated list.

FACULTY: Please work with KELLAN on all catering requests & reconciliation!

2

Need to use the HyVee card?

COORDINATE WITH ZEE!

Be on the lookout for an email with more information!

3

Need to book a room? Please reach out to Zee ASAP!

Room reservations fill up quickly for end of semester events, so the sooner you reach out to Zee, the better!



IMPACTED PARKING ON CAMPUS: STATE HIGH SCHOOL FOOTBALL CHAMPIONSHIPS



If you have a valid parking permit and do not have a Permit Event Sticker:

- Send an email to UNLPTS@unl.edu from your UNL email account and request the event sticker.
- It will be mailed to your campus address
- NOTE: EMAIL REQUEST MUST BE RECEIVED BY NOVEMBER 18 FOR CAMPUS MAIL DELIVERY OF STICKER BEFORE HIGH SCHOOL FOOTBALL CHAMPIONSHIP GAMES.

OR

- Go to Parking and Transit Services, 625 Stadium Drive.
- Request and receive the sticker, at no cost.
- Display the Permit Event Sticker on the vehicle inside front windshield, lower driver's side.

The Nebraska School Activities Association State Football Championship Finals will be played in Memorial Stadium on Monday, November 25, and Tuesday, November 26. These games will have a direct impact on campus parking.

Vehicles with parking permits must display a Permit Event Sticker for access to permit parking areas during events, including the football championships. The Permit Event Sticker, available at no cost, verifies the vehicle permit in the License Plate Recognition System. Garage permits with hangtags do not need the sticker; the hangtag serves as permit verification.



Next DEMAC Meeting November 18th @ 1pm

Visit <https://go.unl.edu/demacform> to leave feedback!

Want to join the meeting? Send an email to demac@unl.edu and let them know you're coming!

Zoom Link: 
<https://unl.zoom.us/j/92407153419>



WEEKLY WINS-DAY



School Psychology
2024



THE SCHOOL PSYCHOLOGY PROGRAM HAD
A GREAT DAY AT THE OMAHA ZOO. THEY
HAVE LOVINGLY TITLED THE OUTING:
"SUE AT THE ZOO!"



Jules had a big week!



They got a
new tattoo!

beep beep ribby ribby!
Jules got a new car!
It feels so good
to have reliable
transportation
again!!!

send bumper sticker
recommendations!!!!



(yes, they bought this sticker)



introducing: Kenneth the Kia!



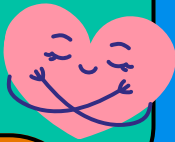
HAPPY NATIONAL SCHOOL PSYCHOLOGY WEEK!



2025 Health Equity Conference



Each year, MHDl hosts a conference to create space for students, researchers, community health professionals, policymakers, and organizations to come together and share strategies and resources for advancing health equity in Nebraska and beyond. The 2025 Health Equity Conference will be held on Friday, February 28, 2025, at the Nebraska Innovation Campus Conference Center in Lincoln, Nebraska. Attendees can look forward to a variety of health equity speakers, workshops, networking opportunities, and research sharing.



February 28, 2025

The event is **FREE** and open to the public.

To learn more, visit: <https://mhdI.unl.edu/2025-health-equity-conference>



**need to request
materials
from CSPC?**



Microsoft Form Link:
<https://go.unl.edu/cspcmaterials>



Upcoming Office Hours

November 14-20, 2024

November 14-15

NO OFFICE HOURS

November 18-20

Please email Sue to set up an appointment.

Susan Swearer, Ph.D., LP

Chairperson

Department of Educational Psychology
University of Nebraska-Lincoln

Need to reserve a room?

<https://tinyurl.com/TEACRoomRes>

*Note: requests must be submitted no later than 48hrs before your reservation request

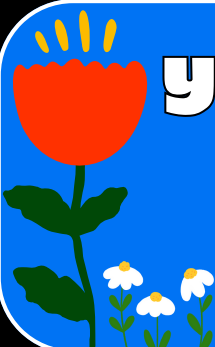
Questions? Ask Zee!



NEED TO MEET WITH JULES?

Please email them to set up an appointment!

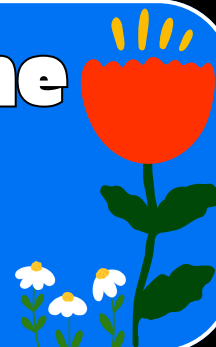
**NOTE: JULES IS UNABLE TO MEET ON WEDNESDAYS*



you have not yet become

all that you will be

keep growing! i believe in you!



November 20, 2024

VOLUME 137

Weekly Wednesday

Department of Educational Psychology

What's Inside:

- 1) Top Stories
- 2) Announcements & News
- 3) Diversity, Equity, & Inclusion
- 4) Clinic Corner
- 5) The Week Ahead

N

Teachers College
Hall

COLLEGE OF EDUCATION
AND HUMAN SCIENCES

EDUCATIONAL ADMINISTRATION
EDUCATIONAL PSYCHOLOGY
BURKS CENTER FOR TESTING
CENTER FOR INSTRUCTIONAL INNOVATION

Nebraska
Lincoln



A holiday break is just around the corner!

UNL students have a short week next week! There is a scheduled holiday break from **Wednesday, Nov. 27-Friday, Nov. 29.**



UNL Staff & Faculty will be out of office November 28-29. All UNL buildings will be locked during this time. **ENJOY YOUR TIME AWAY FROM CAMPUS!**

Winter TA Bootcamp: Registration Now Open!

Registration for the Winter TA Bootcamp, which will take place during January's pre-session, is now open! This program is available to all grad students & postdocs, regardless of whether you are currently a GTA.

The bootcamp will focus on developing essential teaching skills, with topics including effective presentation techniques, active learning strategies, and classroom management.

The program will run from 9:00 AM to 12:00 PM most days. In-person sessions will be held January 13-17, and some online sessions will take place earlier in the week, likely on January 6 and 7. To participate, students must be available to attend the in-person sessions during the week of January 13-17.

CLICK HERE TO REGISTER & LEARN MORE ABOUT THIS OPPORTUNITY!



EDPS Super Swap

NOVEMBER 22nd | 10am-3pm | TEAC 202

The EDPS Super Swap is THIS FRIDAY!!!

Thank you to all who have donated so far! Word about this event has spread around campus, and we are so excited to see y'all this Friday! Jules has had a number of individuals across UNL campus reach out about other students in need of winter clothing. In an effort to maintain sustainability and encourage community, we are opening up the Super Swap to EVERYONE! However, as this event is housed within EDPS, we wanted to make sure that our department was taken care of first. Please note the following schedule:

10am-12pm: EDPS ONLY

12-3pm: ALL ARE WELCOME!



Questions? Email Jules!

All clothing donations must be dropped off to TEAC 114 by the end of today, November 20th. If you need to schedule a late drop off, please email Jules ASAP!

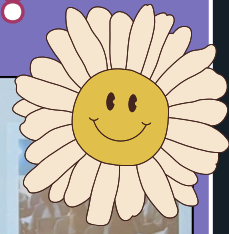
PS: we encourage everyone to bring a tote or a shopping bag to the event! We will have a few available, but potentially not enough. If you have any grocery bags you'd like to donate to the event, please bring them with you on Friday!





Thank you to all who attended Dr. Pandit's presentation!

Thank you for your kindness and hard work setting up this visit, Om! We are so thankful for the opportunity to have Dr. Pandit visit us.



The Institute of Reading Development is looking for summer teachers!

Their approach combines evidence-based practices with engaging activities that make reading fun & meaningful for students. This framework simplifies your role as a teacher so you can focus on what matters most: helping students thrive. Teaching experience is valuable but not necessary, and a teaching certification is not required.

About the role:

- 10 weeks of teaching
- full-time and part-time positions available
- Earn up to \$700 a week
- Work with students both online and in-person
- Gain up to 200 hours of experience teaching classes to students of all ages, from 4 years old to adults!

Interested? Click **HERE** to learn more or apply!



Nebraska State Parks Recreation Survey

Did you know that Nebraska is home to eight state parks? A CASNR study is looking for participants in their Nebraska State Parks survey! They are seeking to understand how students at UNL use & enjoy Nebraska's state parks. The survey is completely anonymous and should take about 5 minutes to complete!

Survey Link: <https://go.unl.edu/casnrparksnrec>

TRANS RIGHTS ARE HUMAN RIGHTS

Transgender Day of Remembrance

TDOR is an annual observance on November 20th that honors the memory and legacy of the transgender people whose lives were lost in acts of anti-trans violence.

“Transgender Day of Remembrance seeks to highlight the losses we face due to anti-transgender bigotry and violence. I am no stranger to the need to fight for our rights, and the right to simply exist is first and foremost. With so many seeking to erase transgender people — sometimes in the most brutal ways possible — it is vitally important that those we lose are remembered, and that we continue to fight for justice.”

-Gwendolyn Ann Smith, founder of TDOR

To my trans friends and chosen family: you are loved, you are light, and you are deserving of a life full of abundant joy and peace. You are worthy. You are valued. You are LOVED.

Learn more about the history of TDOR here: <https://glaad.org/tdor/>

Are you a part of the queer community who was born & raised in the Midwest? Interested in participating in a study about growing up Not Straight™ in corn country?

Requirements:

- Identify as queer
- Was born and raised in the Midwest
- Is between the ages of 19-45 years old

Interested? Contact Rissa at rfarr6@huskers.unl.edu

WEEKLY WINS-DAY: WIENERMOBILE EDITION

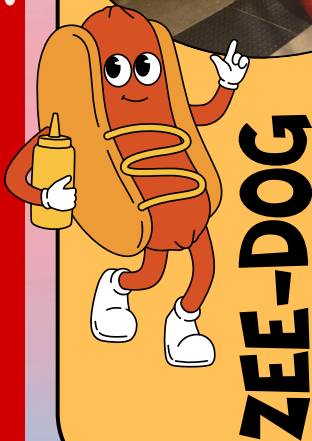
Hot Dog! The Oscar Mayer Wienermobile made a few stops around Lincoln over the last week! On Friday, they were parked outside of the Lincoln Children's Museum. Mustard Maddie & Pickle Pip were wonderful hosts!



AIOLI AMANDA



EAT-EM-UP EDITH + KETCHUP KYLE JOINED US!



ZEE-DOG



JUMBO-DOG JULES RIDING SHOTGUN!

2025 Health Equity Conference

February 28, 2025

Each year, MHDl hosts a conference to create space for students, researchers, community health professionals, policymakers, and organizations to come together and share strategies and resources for advancing health equity in Nebraska and beyond. The 2025 Health Equity Conference will be held on Friday, February 28, 2025, at the Nebraska Innovation Campus Conference Center in Lincoln, Nebraska. Attendees can look forward to a variety of health equity speakers, workshops, networking opportunities, and research sharing.

The event is FREE and open to the public.

To learn more, visit: <https://mhdil.unl.edu/2025-health-equity-conference>



SPED 803: Executive Function

Spring 2025

Department of Special Education & Communication Disorders

Course Description:

Theories of executive function (EF) and its development. Links between EF & developmental outcomes. Executive function in special populations. Considerations for including executive function in educational and psychological research.



This is a discussion-based course. There will be some brief lectures, but the purpose of these lectures is to guide and facilitate critical thinking & discussion. Students will be expected to lead group discussions.

Interested? Graduate & Doctoral students should contact Dr. Susan Loveall-Hague (sloveall-hague2@unl.edu) for more information on how to register for this course.

VIRTUAL/IN-PERSON & CLASS DATE/TIME ARE FLEXIBLE

Clinic Corner



need to request materials from CSPC?



Microsoft Form Link: <https://go.unl.edu/cspcmaterials>





Upcoming Office Hours November 21-27, 2024

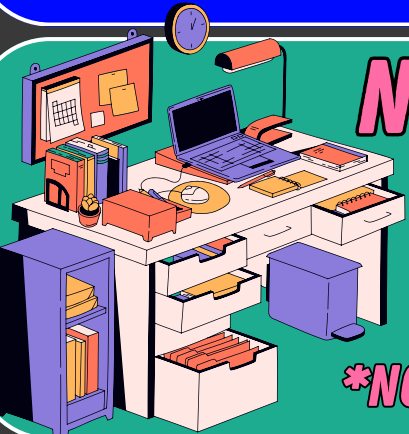
Please email Sue to set up an appointment.

Susan Swearer, Ph.D., LP
Chairperson
Department of Educational Psychology
University of Nebraska-Lincoln

Need to reserve a room?

<https://tinyurl.com/TEACRoomRes>

*Note: requests must be submitted no later than 48hrs before your reservation request
Questions? Ask Zee!



NEED TO MEET WITH JULES? Please email them to set up an appointment!

**NOTE: JULES IS UNABLE TO MEET ON WEDNESDAYS*

