

October 2, 2024

Volume 130

# Weekly Wednesday

Department of Educational Psychology



## What's Inside:

- 1) Top Stories
- 2) Announcements & News
- 3) Diversity, Equity, & Inclusion
- 4) Clinic Corner
- 5) October Happiness
- 6) The Week Ahead





# EDPS Homecoming Tailgate



**Saturday, October 5th**

**Tailgate: 12pm  
Kickoff: 3pm**

Join us at 12pm on Saturday, October 5th for a day of walking tacos, corn hole, and a great time!

**The event is BYOB & BYOC**

(bring your own beverage & bring your own chair)

Please utilize the link or QR code to indicate what food item(s) you plan to bring!



**Spot #20  
1345 New Hampshire Street**

**SIGN UP SHEET:**  
<https://go.unl.edu/edpstailgate>

Questions? Email Ali Shull  
[ashull3@huskers.unl.edu](mailto:ashull3@huskers.unl.edu)



## Homecoming celebration impacts parking in Memorial Mall area



The University of Nebraska Homecoming Celebration on Friday, October 4, will bring guests to campus. The Homecoming Parade directly impacts parking and access.

The parade route starts outside the Nebraska Union, makes its way down 16th Street and Vine Street, and ends in the East Memorial Stadium Loop.

To accommodate the parade, between 4:00 p.m. and 7:30 p.m. on Friday, October 4:

- There will be no vehicle access in and out of the Memorial Mall area.
- Vine Street will close between 14th and 16th Streets for the parade.
- If you are an F3/D1 permit holder, exit the lot prior to 4:00 p.m. or park in the 14th and Avery Garage above Level One to ensure access to your vehicle.

If you have questions, call Parking and Transit Services at 402-472-1800





CORNCHELLA

Save the date!

UNL'S HOMECOMING CELEBRATION WILL TAKE PLACE SEPTEMBER 30-OCTOBER 5

SEE THE FULL SCHEDULE OF EVENTS:

[HTTPS://HOMECOMING.UNL.EDU/SCHEDULE-EVENTS/](https://homecoming.unl.edu/schedule-events/)

# WGS 2024 Annual Lecture

***Transforming Narratives of Resilience Through Centering Transgender and Nonbinary People's Lives***

Jae Puckett (they/them) is an Assistant Professor in the Department of Psychology at Michigan State University who leads Trans-ilience, a community-engaged research team focused on minority stress and resilience in transgender and nonbinary communities. Their work has focused on identifying novel forms of minority stress experienced by trans and nonbinary people, the impacts on health and wellbeing, and contextualizing these experiences in the broader sociopolitical contexts that influence the lives of trans and gender diverse people, as well as advancing understanding of the unique ways resilience is embodied in these communities.

with Jae Puckett, PhD



Jackie Gaughan Multicultural Center, Unity Room (room 212)

→ **Thurs. October 24 at 6pm**

## The Super Swap is coming...

Your favorite EDPS Clothing Swap/Mutual Aid event is BACK! Start clearing your closets and save those winter-weather clothes you no longer wear or need!

**MORE DETAILS SOON!!!**





# EDPS Parent Support Room: NOW OPEN!

As part of our department's commitment to DEI, we wanted to create a space where parents could work alongside their children should they need to come to campus with you. We are in the early stages of building this room, and we need your help!!

The parent support room is located in TEAC 210. We hope to fill this room with toys and supplies for kids to enjoy while they're on campus with you!

### Wishlist:

- Art Supplies (markers, crayons, kid-friendly scissors, coloring books, etc.)
- Books
- Play rug
- Puzzles/Board Games
- World Map/Kids Posters

Have questions or want to donate?

TALK TO ZEE OR PATRICIA!



If you find yourself unable to access the room, you can find a key at the following places:

- Zee's Desk
- NEAR Center Front Desk
- Patricia's Office (TEAC 213)

## DEMAC MEETINGS & FEEDBACK FORM

Wanna chat with DEMAC? Meetings are held (PLUS, AN UPDATED EMAIL ADDRESS!) via Zoom every other Monday from 1-2pm.

There is an "open" portion to every meeting where students are invited to share concerns, feedback, or ideas with DEMAC!

DEMOC asks that any student who wishes to join a meeting for open hours please email [demac@unl.edu](mailto:demac@unl.edu) to let them know you plan on joining a meeting. Additionally, DEMOC has a new **FEEDBACK FORM** where you can submit any questions, comments, or concerns directly to DEMOC.

Scan the QR code or visit

<https://go.unl.edu/demacform>

to leave feedback!



NEXT DEMAC MEETING:  
OCT 7, 2024 01:00 PM



Zoom Link: <https://unl.zoom.us/j/92407153419>

## Annual Nebraska Educators of Color Summit

The purpose of the Educators of Color Summit is to reinforce that our representation matters in fostering educational relevance, empowerment, encouragement, and leadership development among student scholars and educators of Color.

Hosted by the University of Nebraska-Lincoln and Lincoln Public Schools, this state-wide summit is open to student scholars of diversity, pre-service teachers, in-service educators, administrators, and university faculty of diversity.

The partnership's intent is to build on current racial justice movements and to create an authentic space to build community and solidarity.

Specifically, this partnership seeks to:

- Grow our professional network of dedicated Educators of Color from across Nebraska
- Share ideas for collaboration, activism, and self-care
- Envisioning innovative and liberatory practices to meet the needs of Nebraska's diverse student scholars

CONNECTING • EMPOWERING • LEADING • ENCOURAGING

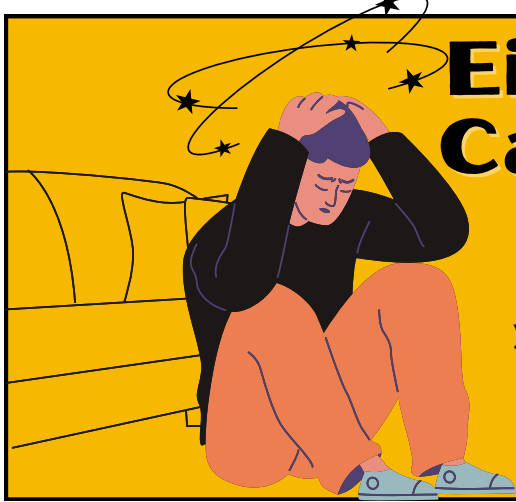
### 5TH ANNUAL EDUCATORS OF COLOR SUMMIT

OCTOBER 24-25 • 2024

Certificated, Classified, Administrative, Pre-service and Aspiring Educator Tracks  
LINCOLN, NEBRASKA

To learn more/register, visit:  
<https://cehs.unl.edu/cehs/summit/>





# Eight Questions That Can Help You Survive Election Stress

These questions will help you check in with yourself—and perhaps boost your resilience.

Read it here:

<https://go.unl.edu/electionstress>

## Homecoming Alumni Spotlight: Dr. Sherry Wang

Dr. Sherry Wang earned her master's degree in 2008 and her Ph.D. in 2013 in counseling psychology from the University of Nebraska-Lincoln. She currently serves as the associate dean of justice, equity, diversity, and inclusion at the School of Education and Counseling Psychology, as well as an associate professor of counseling psychology, at Santa Clara University.

"I chose UNL's counseling psychology program after comparing it to other doctoral programs. UNL offered the most encouraging, supportive, warm, experience—both my interactions with the faculty and the student community!"



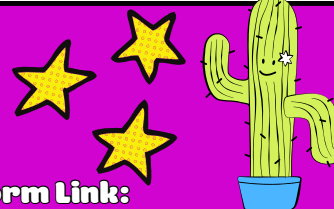
Check out the entire Q&A with Dr. Sherry Wang here:

<https://cehs.unl.edu/news/cehs-homecoming-sherry-wang/>

**need to request materials from CSPC?**

Microsoft Form Link:

<https://go.unl.edu/cspcmaterials>





# October Happiness Calendar

SUNDAY	MONDAY	TUESDAY	WEDNESDAY	THURSDAY	FRIDAY	SATURDAY
		1 Look for <b>moments of contentment</b> .	2 Spend <b>time in nature</b> .	3 <b>Delight</b> in someone else's happiness.	4 Take a walk and <b>seek out beauty</b> .	5 In a divided world, <b>look for common values</b> .
6 <b>Pursue your interests</b> .	7 <b>Find people you can trust</b> .	8 <b>Set boundaries</b> for your well-being.	9 <b>Label feelings</b> when they feel overwhelming.	10 Limit your <b>news consumption</b> .	11 <b>Give yourself a hug</b> .	12 <b>Get some exercise</b> .
13 Remember that <b>everyone struggles at times</b> .	14 Step back from a disagreement to <b>see both sides</b> .	15 <b>Cultivate curiosity</b> .	16 <b>Don't judge your emotions</b> as good or bad.	17 Imagine how you could <b>make the world better</b> .	18 <b>Be kind</b> to others.	19 <b>How purposeful are you?</b> Take our quiz to find out.
20 Don't get drawn into <b>unnecessary conflict</b> .	21 <b>Marvel at something</b> that brings you awe.	22 Spend some <b>quality time</b> with a friend.	23 Show your <b>joy and enthusiasm</b> .	24 Think about your <b>positive qualities</b> .	25 <b>Meditate</b> —if it works for you.	26 <b>Give yourself care and warmth</b> .
27 <b>Be a good listener</b> .	28 Believe that <b>your body is strong</b> .	29 In difficult conversations, <b>step back and observe</b> yourself and your reactions.	30 <b>Take a nap</b> .	31 Reflect on what gives you <b>meaning in life</b> .	 <b>Greater Good Science Center</b> <a href="http://ggsc.berkeley.edu">ggsc.berkeley.edu</a> <a href="http://greatergood.berkeley.edu">greatergood.berkeley.edu</a>	

This month, calm your busy mind

"You don't have to have a reason to be tired. You don't have to earn rest or comfort. You're allowed to just be."

-A Prayer for the Crown-Shy by Becky Chambers

take a walk in the sunken gardens!

make a cup of tea!

embrace silliness!

"I'm suggesting that we protect our spaces and our time for non-instrumental, noncommercial activity and thought, for maintenance, for care, for conviviality."

-How to Do Nothing by Jenny Odell



## Upcoming Office Hours

October 3-9, 2024

Thurs. Oct. 3: 2-3pm

Fri. Oct. 4: 12:30-1pm

Mon. Oct. 7: 2:30-3:30pm

Tues. Oct. 8: 12:30-1pm

Wed. Oct. 9: 11am-12pm

Susan Swearer, Ph.D., LP

Chairperson

Department of Educational Psychology  
University of Nebraska-Lincoln

## Need to reserve a room?



<https://tinyurl.com/TEACRoomRes>

\*Note: requests must be submitted no later than 48hrs before your reservation request



Questions? Ask Zee!

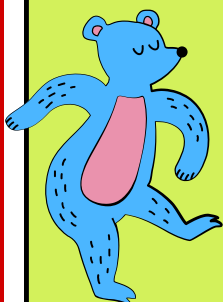


## Jules' Office Hours

& DEMAC Library Hours

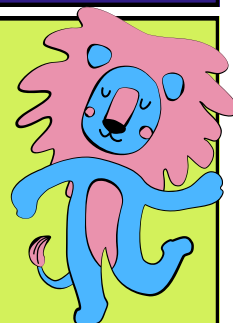
Please email Jules to  
set up an appointment

Jules is not available to meet on Wednesdays



come on, Bestie!!

WE'RE TAKING A 10 MINUTE BREAK  
AND HAVING A DANCE PARTY!





October 9, 2024

VOLUME 130

# Weekly Wednesday

Department of Educational Psychology



## What's Inside:

- 1) Top Stories
- 2) Announcements & News
- 3) Diversity, Equity, & Inclusion
- 4) Clinic Corner
- 5) The Week Ahead



**LPS Fall Break will take place  
Friday, October 11–Tuesday, October 15**

**The Parent Support Room is here for you!**

**Located in TEAC 210, the Parent Support  
Room is here as a place where your  
kiddos can play while you work  
here on campus!**

**New things are being added every day to  
keep your little ones occupied, and there  
is a large desk from where you can work  
and watch over your kids.**

**Questions? Ask Patricia or Zee!**



## **WGS 2024 Annual Lecture**

**Transforming Narratives of Resilience  
Through Centering Transgender and  
Nonbinary People's Lives**

**This event is FREE and open to the public. with Jae Puckett, PhD**

Jae Puckett (they/them) is an Assistant Professor  
in the Department of Psychology at Michigan State

University who leads Trans-illience, a community-engaged research

team focused on minority stress and resilience in transgender and nonbinary

communities. Their work has focused on identifying novel forms of minority stress  
experienced by trans and nonbinary people, the impacts on health and wellbeing, and  
contextualizing these experiences in the broader sociopolitical contexts that influence  
the lives of trans and gender diverse people, as well as advancing understanding of the  
unique ways resilience is embodied in these communities.



**Jackie Gaughan Multicultural  
Center, Unity Room (room 212)**

**Thurs. October 24 at 6pm**





# OGS SPOTLIGHT SHOUTOUT Kami Buchanan



Kami is a third-year Doctoral student in our Counseling Psychology program. She is also our current

## Miss Nebraska USA 2024!

Through her research, Kami focuses on the experiences of historically minoritized and oppressed communities, exploring how systems affect their well-being. She firmly believes that even the smallest actions can create significant transformations, fostering a more inclusive and supportive environment where everyone can thrive.

TO READ OGS' FULL REPORT, CLICK ON KAMI'S PHOTO OR VISIT: [HTTPS://GO.UNL.EDU/KAMIBUCHANAN](https://go.unl.edu/kamibuchanan)



**KAMRYN BUCHANAN**  
PH.D. IN COUNSELING PSYCHOLOGY

## Youth Development - PAID INTERNSHIP! Family Service Lincoln is NOW HIRING!



Part-time opportunities in their Youth Development Program are now available, and applications are open for Spring 2025!



As our city's largest before and after-school care provider, Family Service Lincoln provides a unique opportunity to work throughout Lincoln Public Schools, gaining knowledge in curriculum development, incident management, leadership, and much more - all while building impactful relationships with youth, families, school personnel, partners, and the community.

Questions? Email Shayne Pearson: [spearson@familyservicelincoln.org](mailto:spearson@familyservicelincoln.org)

Applications can be found [HERE](#)

# EDPS Representation at NSPA!

A number of EDPS students and faculty attended the 2024 Nebraska School Psychologists Association Conference in Omaha on October 4th.

Dr. Matt Gormley gave a presentation at the conference, and one of our students won an incredible award! See the Weekly Wins-day for more details.



We feel so honored, thankful, and proud to work alongside such kind, smart, wonderful people! Thank you for all you do to represent EDPS!



# Eight Questions That Can Help You Survive Election Stress

These questions will help you check in with yourself—and perhaps boost your resilience.

Read the article here:

<https://go.unl.edu/electionstress>



## DEMAC Meetings & Feedback Form (& Updated Email Address!)



Wanna chat with DEMAC? Meetings are held via Zoom every other Monday. There is an "open" portion to every meeting where students, staff, and faculty are invited to share concerns, feedback, or ideas with DEMAC.

DEMAC asks that anyone who wishes to join a meeting for open hours please email [demac@unl.edu](mailto:demac@unl.edu) to let them know you plan on joining a meeting.

Additionally, DEMAC has a new FEEDBACK FORM where you can submit any questions, comments, or concerns directly to DEMAC.

Scan the QR code or visit <https://go.unl.edu/demacform> to leave feedback!



Next DEMAC Meeting •  
October 21 @ 1pm

Zoom Link: <https://unl.zoom.us/j/92407153419>

## WEEKLY WIVS-DAY

CONGRATULATIONS to Amanda Barrett, a third-year doctoral student in the school psychology program, for being elected as the Graduate Student Member Slate on APA's Membership Board by its Council of Representatives. The Membership Board is responsible for all APA member recruitment and retention, as well as all APA associate and fellow status processes. Amanda is looking forward to serving as the board's very first graduate student leader for the next three years and hopes to represent and advocate for her fellow grad student APA members!

HOORAY!

**Hailey Kisner, a School Psychology Ed.S. student, was named Outstanding School Psychology Graduate Student for UNL at the NSPA Conference in Omaha last week!!**  
WOOOOHOOOO!!



WooHoo  
She's purrrfect!

Jules is currently on vacation visiting their best friends in Knoxville, Tennessee. They were warmly welcomed by Rosa, their best friend's cat.



# Free Webinar!

Cultural and Historical Considerations in the Assessment Process of Young Native American Children

**CLICK  
HERE TO  
REGISTER!**



Featuring Dr. Adriana Youssef & Megan Eastman, LICSW



**ADRIANA YOUSSEF, PHD**  
PSYCHOLOGIST/PROGRAM  
CLINICAL MANAGER, RED  
LAKE NATION'S PEDIATRIC  
MENTAL HEALTH PROGRAM



**MEGAN EASTMAN, LICSW**  
*CROW/APSALOOKE*  
PROGRAM DIRECTOR, RED  
LAKE NATION'S PEDIATRIC  
MENTAL HEALTH PROGRAM

**October 30th  
1pm CST**

## Learning Objectives Include:

- Recall historical systems of oppression which have impacted Native American children and families
- Explain the role of mental health professionals in systems of oppression of Native American clients
- Analyze and shift biases and/or stereotypes of working with Native American children and families
- Identify how culture shapes the assessment and therapy process with young children
- Challenge western approaches to working with Native American children and families

## Health Equity Grand Rounds

with Angela Cooke-Jackson

**Acknowledgement, Respect, and Preparation: Community Engagement and Participatory Design Research among Vulnerable Populations.**

Dr. Angela Cooke-Jackson will discuss how community engagement and participatory design research (CBDR) can support vulnerable communities in practice and policy, build their capacity, and create collaborations to address health challenges.



**This event is FREE and open to the public!**

**Wed. Oct. 16th | 1pm | Via Zoom**

Register here: <https://go.unl.edu/roundscooke-jackson>



**need to  
request  
materials  
from CSPC?**



Microsoft Form Link:

<https://go.unl.edu/cspcmaterials>



## Upcoming Office Hours

October 10-16, 2024

Thurs. Oct 10: 2-3pm

Fri. Oct. 11: 11:30am-12:30pm

Mon. Oct. 14: 10-11am

Tues. Oct. 15: 1-1:30pm

Wed. Oct. 16: 12-1pm

Susan Swearer, Ph.D., LP

Chairperson

Department of Educational Psychology  
University of Nebraska-Lincoln

## Need to reserve a room?



<https://tinyurl.com/TEACRoomRes>

\*Note: requests must be submitted no later than 48hrs before your reservation request



Questions? Ask Zee!



## Jules' Office Hours

& DEMAC Library Hours

Please email Jules to set up an appointment

Jules is not available to meet on Wednesdays

my coffee is strong  
and so am i





October 16, 2024

VOLUME 131

# Weekly Wednesday

Department of Educational Psychology

## What's Inside:

- 1) Top Stories
- 2) Announcements & News
- 3) Diversity, Equity, & Inclusion
- 4) Clinic Corner
- 5) The Week Ahead





# FALL BREAK IS ALMOST HERE!

## UNL's Fall Break is Monday, October 21-Tuesday, October 22nd



Enjoy your time away!!

looking for something to do  
over the long weekend?

### Clear out your closets...the EDPS Super Swap is back!!!

NOVEMBER  
22<sup>nd</sup>  
10AM-3PM  
TEAC 202

That's right! Your favorite clothing swap/mutual aid event is coming soon!

#### WHAT IS THE SUPER SWAP?

The EDPS Super Swap was created by Jules in Fall 2023. This event is a clothing swap/community building activity with the opportunity to share what you don't need or want with others who do! We are eager to help people find necessary items in addition to helping others clear out their closets and homes of items that no longer serve their purpose. Additionally, all leftover items from the Super Swap are distributed to local mutual aid groups, rather than simply dropped off at thrift stores to be sold for a profit.

The main idea is this: as the winter months approach, people are cleaning out their closets and pulling out clothes they no longer love, no longer want, or no longer need. We also have students who are new to Nebraska and may not have adequate winter clothing to help them through the colder months.

The Super Swap features clothing, furniture, and household items. **Take a look at your closet and see if there are any clothing items you no longer want, need, or use.** Our fall semester event is the "Winter Warmth Edition" where we focus on items such as **coats, sweaters, scarves, hats, (new) warm socks, and long trousers** (no shorts, sundresses, sandals, etc.).

*In addition to clothing items, we also accept household items. Please see the link below for full instructions for how to submit furniture to the Super Swap.*

**We are so excited to once again host everyone's favorite clothing swap!! Start clearing out your closets now!!! We'll start taking donations once you're back from fall break.**

Please utilize the following link or scan the QR code to learn more about the event, as well as to find a list of acceptable donations for the fall Super Swap:

<https://go.unl.edu/superswapfall2024>





# WORKSHOP: HOW AI IS IMPACTING INTERNATIONAL STUDENTS

Join the CTT and ISSO for a workshop exploring the impact of generative artificial intelligence (AI) on international students.

The workshop will examine how instructors can encourage international students to use AI to enhance learning.

The workshop will discuss the many ethical challenges around AI and how instructors may want to limit student AI use. Participants will leave with a better understanding of the nuanced ways that AI has both a positive and negative impact on international student learning and practical ideas to implement in their courses.



**TO LEARN MORE AND TO REGISTER, VISIT:**

**[HTTPS://GO.UNL.EDU/CTTISSOAI](https://go.unl.edu/cttissoai)**

## Want to start a career in June with an immediate impact?

Teach for America is looking for individuals to apply for their 2025 corps!

**Full salary & benefits included!**

TFA corps members teach full time for at least 2 years in schools that are underserved due to systemic racism and/or poverty. Corps members are:

- selected by Teach for America
- trained & supported by Teach for America
- Hired by a local school or district
- Paid the same salary and benefits as other new teachers
- Certified to teach while in the corps

Senior deadline to apply  
**Oct 25**  
Underclassmxn deadline: Nov 20th

Explore our roles for college students  
Ignite Fellowship & the Corps

Interested? Scan the QR code or visit **[THIS WEBSITE.](#)**

## WGS 2024 Annual Lecture

### Transforming Narratives of Resilience

### Through Centering Transgender and

### Nonbinary People's Lives with Jae Puckett, PhD

## Thurs. October 24 at 6pm

Jackie Gaughan Multicultural Center, Unity Room (room 212)

**This event is free and open to the public!**



# DEMAC Meetings & Feedback Form

Wanna chat with DEMAC? Meetings are held via Zoom every other Monday. There is an "open" portion to every meeting where students, staff, and faculty are invited to share concerns, feedback, or ideas with DEMAC.

Additionally, DEMAC has a new FEEDBACK FORM where you can submit any questions, comments, or concerns directly to DEMAC.

\*Note: DEMAC asks that anyone who wishes to join a meeting for open hours please email [demac@unl.edu](mailto:demac@unl.edu) to let them know you plan on joining a meeting.

Next DEMAC Meeting:

**October 21st**

**1pm | Via Zoom**

Zoom Link: <https://unl.zoom.us/j/92407153419>



Scan the QR code or visit <https://go.unl.edu/demacform> to leave feedback!



# October is LGBTQ History Month!

Although June is pride month, did you know that October is actually LGBTQ History Month?

First celebrated in 1994, LGBTQ History month celebrates queer life in all ways. October marks the anniversary of the March on Washington for Gay Rights in 1979, which was one of the largest protests in history. October also celebrates days such as National Coming Out Day on October 11th, which commemorates the first & second marches on Washington (1979 & 1987).

Want to learn more about the background of LGBTQ history month? Visit: <https://lgbthistorymonth.com/background>



# WEEKLY WINS-DAY

Dr. Sungeun Kang was selected for the Korean-American Educational Research Associations (KAERA) Early Career Scholar Program!!!!



Jules is continuing to enjoy their vacation! Earlier this week, a friend made them the viral "Focaccia Hot Dogs" for dinner.



A meal fit for Hot Dog Royalty!

## SUBMIT YOUR WINS!

If it made you happy, LET'S CELEBRATE IT! Photos are not required! Send your wins to Jules via email or visit the link below (or scan the QR code) to learn more & submit your wins. <https://go.unl.edu/weeklywins-day>





# School Psychology Anti-Racism UNconference

An UNconference is a participant-driven gathering that seeks to dismantle hierarchical structures and co-create knowledge and resources. We hope to uproot school psychological practices that perpetuate systems of racism and oppression. You, your ideas, and your work and your contribution are VITAL to making this happen. UNconferences are active—you are signing up to attend, participate, and possibly even facilitate some of the discussions.

**Nov. 17th | 11am-4pm | Webinar**

**CLICK HERE TO REGISTER & LEARN MORE!**

## 2024 UNconference

interactive

NO COST

anti-oppression

Sunday  
17 Nov



DIVISION OF  
SCHOOL PSYCHOLOGY PRESENTS

**UPROOTING SCHOOL  
PSYCHOLOGY**

# Free Webinar!

**Cultural and Historical Considerations in the Assessment Process of Young Native American Children**

**CLICK  
HERE TO  
REGISTER!**



Featuring Dr. Adriana Youssef & Megan Eastman, LICSW



**ADRIANA YOUSSEF, PHD**  
PSYCHOLOGIST/PROGRAM  
CLINICAL MANAGER, RED  
LAKE NATION'S PEDIATRIC  
MENTAL HEALTH PROGRAM



**MEGAN EASTMAN, LICSW**  
*CROW/APSAALOOKE'*  
PROGRAM DIRECTOR, RED  
LAKE NATION'S PEDIATRIC  
MENTAL HEALTH PROGRAM

**October 30th  
1pm CST**

### Learning Objectives Include:

- Recall historical systems of oppression which have impacted Native American children and families
- Explain the role of mental health professionals in systems of oppression of Native American clients
- Analyze and shift biases and/or stereotypes of working with Native American children and families
- Identify how culture shapes the assessment and therapy process with young children
- Challenge western approaches to working with Native American children and families

**need to  
request  
materials  
from CSPC?**



**Microsoft Form Link:**

**<https://go.unl.edu/cspcmaterials>**





# Upcoming Office Hours

October 17-23

Thurs. Oct 17: 11am-12pm

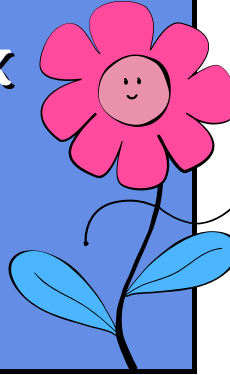
Fri. Oct. 18: 11am-12pm

Mon. Oct. 21: **FALL BREAK**  
(no office hours)

Tues. Oct. 22: **FALL BREAK**  
(no office hours)

Wed. Oct. 23: 12-1pm

Susan Swearer, Ph.D., LP  
Chairperson  
Department of Educational Psychology  
University of Nebraska-Lincoln



# Need to reserve a room?



<https://tinyurl.com/TEACRoomRes>

\*Note: requests must be submitted no later than 48hrs before your reservation request



Questions? Ask Zee!



# Jules' Office Hours

& DEMAC Library Hours

Please email Jules to set up an appointment

Jules is not available to meet on Wednesdays



can't talk right now,  
I'm chasing my dreams



October 23, 2024

VOLUME 132

# Weekly Wednesday

Department of Educational Psychology

## What's Inside:

- 1) Top Stories
- 2) Announcements & News
- 3) Diversity, Equity, & Inclusion
- 4) Clinic Corner
- 5) The Week Ahead

N

Teachers College  
Hall

COLLEGE OF EDUCATION  
AND HUMAN SCIENCES

EDUCATIONAL ADMINISTRATION  
EDUCATIONAL PSYCHOLOGY  
BURKS CENTER FOR TESTING  
CENTER FOR INSTRUCTIONAL INNOVATION

Nebraska  
Lincoln



**The EDPS Office will be closed on Friday Morning due to our annual Faculty Retreat. We will open the office at 1pm.**

**TEMPORARILY CLOSED**

**You will need your nCard to access TEAC 114 on Friday Morning. If you do not have nCard access or are unsure of your access, please email Zee!**



## **CLASS REGISTRATION FOR SPRING 2025 IS JUST AROUND THE CORNER!!**



**PRIORITY REGISTRATION BEGINS MONDAY, OCTOBER 28TH!**



Be sure to register for your full course load ASAP, as many classes are limited on space. Please note: some classes may require a permission code to register. Utilize the CARS system on our website under "Current Student Support" to request a permission code, should you need one. As a reminder, permission to register for a course is contingent on instructor approval.

**IF YOU ARE UNSURE OF WHICH COURSES TO TAKE, PLEASE SEE YOUR PROGRAM HANDBOOK OR TALK TO YOUR ADVISOR!**

## **EDPS Costume Contest**



As many of you already know, Jules & Zee LOVE Halloween! They've been hard at work decorating the office (with more fun decor to come).

Are you also a fan of wearing fun clothing and eating delicious candy? Well, you're in luck!! EDPS is hosting their second annual **HALLOWEEN COSTUME CONTEST!**



Dig into your closets and find your best costume pieces, or throw together a closet cosplay for Halloween. Then, stop by TEAC 114 on October 31st to have your photo taken in order to enter the costume contest!



The winner will receive a gift card to a local coffee shop of their choosing.

**EVERYONE is welcome to participate!**

**GOOD LUCK & HAVE FUN!!!** Questions? Email Jules or Zee!





# Now Hiring!

## Job Opportunity for a Licensed Psychologist!

Boys Town is hiring for a clinic director and staff psychologist in Grand Island, NE. If you or someone you know is interested, please follow the link below! Loan forgiveness, as well as opportunities for training and supervision, are available.



→ Interested? Click [HERE](#)

# EDPS Super Swap

winter warmth edition

**That's right! Your favorite clothing swap/mutual aid event is coming soon!**

## WHAT IS THE SUPER SWAP?

The EDPS Super Swap was created by Jules in Fall 2023. This event is a clothing swap/community building activity with the opportunity to share what you don't need or want with others who do! We are eager to help people find necessary items in addition to helping others clear out their closets and homes of items that no longer serve their purpose. Additionally, all leftover items from the Super Swap are distributed to local mutual aid groups, rather than simply dropped off at thrift stores to be sold for a profit.

**NOVEMBER 22nd**  
**10AM-3PM TEAC 202**

The main idea is this: as the winter months approach, people are cleaning out their closets and pulling out clothes they no longer love, no longer want, or no longer need. We also have students who are new to Nebraska and may not have adequate winter clothing to help them through the colder months.



The Super Swap features clothing, furniture, and household items. **Take a look at your closet and see if there are any clothing items you no longer want, need, or use.** Our fall semester event is the "Winter Warmth Edition" where we focus on items such as **coats, sweaters, scarves, hats, (new) warm socks, and long trousers** (no shorts, sundresses, sandals, etc.).

*In addition to clothing items, we also accept household items. Please see the link below for full instructions for how to submit furniture to the Super Swap.*



**We are so excited to once again host everyone's favorite clothing swap!! Start clearing out your closets now!!! You can bring your donations to TEAC 114 any time between now and November 20th**

**Please utilize the following link or scan the QR code to learn more about the event, as well as to find a list of acceptable donations for the fall Super Swap:** <https://go.unl.edu/superswapfall2024>



# WGS 2024 Annual Lecture

## Transforming Narratives of Resilience Through Centering Transgender and Nonbinary People's Lives

with Jae Puckett, PhD

This event is **FREE** and open to the public.

### Thurs. October 24 at 6pm

Jackie Gaughan Multicultural Center, Unity Room (room 212)



# WEEKLY WINS-DAY

Matt Brooks, a DLS student, was named one of the Buffett Early Childhood Research Graduate Scholars for 2024-2025!!!

His research examines whether connecting with nature, a frequent recommendation for healthy child development, can also help alleviate stress and burnout in early childhood professionals.

Way to go, Matt! We are so proud of you!



Jules is back from vacation! Before they left Knoxville, they made a stop at their favorite place: The Turkish Market.

Tabbouleh ve piyaz... çok lezzetli!

Afiyet OLSUN!

## SUBMIT YOUR WINS!

NO JOY IS TOO SMALL TO CELEBRATE!!

To submit your wins, either email Jules your win with the subject line "Weekly Win" or visit the link below to fill out a Microsoft Form!



[HTTPS://GO.UNL.EDU/WEELYWINS-DAY](https://go.unl.edu/weeklywins-day)

## Next DEMAC Meeting: November 7th @ 1pm

Visit <https://go.unl.edu/demacform> to leave feedback!

Zoom Link: <https://unl.zoom.us/j/92407153419>





# Upcoming Webinar: Promoting Culturally and Linguistically Responsive Autism Identification Practices in School Settings

Presented by the Buros Center for Testing

Dr. Harris will address the following topics:

- Describe cultural and linguistic factors, individual biases, and systemic inequities that may influence knowledge and interpretation of potential Autism characteristics.
- Recognize limitations and challenges with traditional Autism assessment practices within culturally and linguistically minoritized populations.
- Identify and promote implementation of culturally and linguistically responsive Autism identification strategies.

With Bryn Harris, PhD, NCSP, LP



Tuesday, October 29

11:30am-1pm

Click **HERE** to register!

**CLICK HERE**

## Promoting Students' Well-Being by Building their Social and Emotional Skills



This webinar will illustrate how school psychologists can support their students' mental well-being by building protective factors such as emotional regulation, relationship skills, optimistic thinking, and problem solving. Attendees will learn how they can integrate strategies focused on building these skills using a tiered support framework. Implications from this webinar will be available to all attendees.

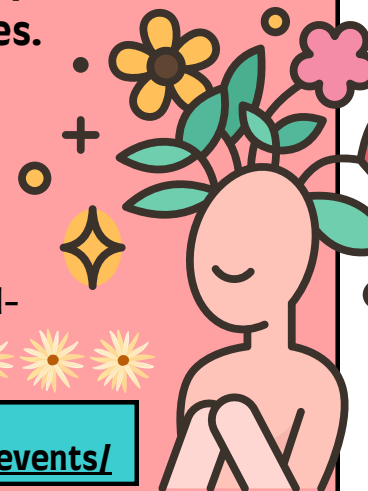
### Learning Objectives:

- Explain the importance of social and emotional skills for promoting mental health and well-being.
- Describe the importance of promoting student wellness in addition to addressing their mental health concerns.
- List at least one strategy that they can use to promote the well-being of their students.

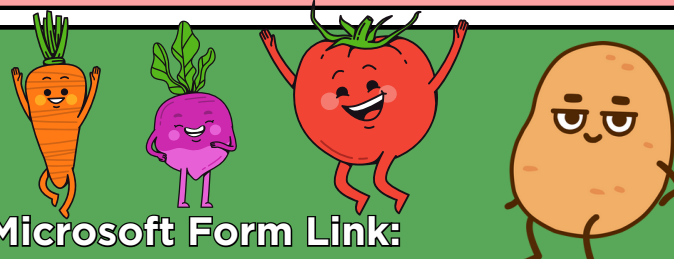


To learn more and register, visit:

<https://apadivision16.org/continuing-education/upcoming-live-events/>

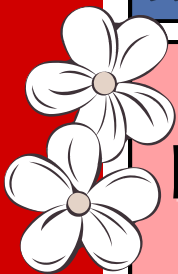


NEED TO  
REQUEST  
MATERIALS  
FROM CSPC?



Microsoft Form Link:

<https://go.unl.edu/cspcmaterials>





# Upcoming Office Hours

October 24-30, 2024

Thurs. Oct 24: 11:30am-12:30pm

Fri. Oct. 25: NO OFFICE HOURS

Mon. Oct. 28: 2-3pm

Tues. Oct. 29: 1-2pm

Wed. Oct. 30: 11am-12pm

Susan Swearer, Ph.D., LP  
Chairperson  
Department of Educational Psychology  
University of Nebraska-Lincoln

## Need to reserve a room?

<https://tinyurl.com/TEACRoomRes>

\*Note: requests must be submitted no later than 48hrs before your reservation request

Questions? Ask Zee!



## NEED TO MEET WITH JULES?

Please email them to set up an appointment!

*\*NOTE: JULES IS UNABLE TO MEET ON WEDNESDAYS*

Kinda Moody  
Super Groovy





October 30, 2024

VOLUME 134

# Weekly Wednesday

Department of Educational Psychology

## What's Inside:

- 1) Top Stories
- 2) Announcements & News
- 3) Diversity, Equity, & Inclusion
- 4) Clinic Corner
- 5) The Week Ahead

N

Teachers College  
Hall

COLLEGE OF EDUCATION  
AND HUMAN SCIENCES

EDUCATIONAL ADMINISTRATION  
EDUCATIONAL PSYCHOLOGY  
BURKS CENTER FOR TESTING  
CENTER FOR INSTRUCTIONAL INNOVATION

Nebraska  
Lincoln



# EDPS Costume Contest

As many of you already know, Jules & Zee LOVE Halloween! They've been hard at work decorating the office, and they can't wait for you to see it!

## & Halloween Fun!

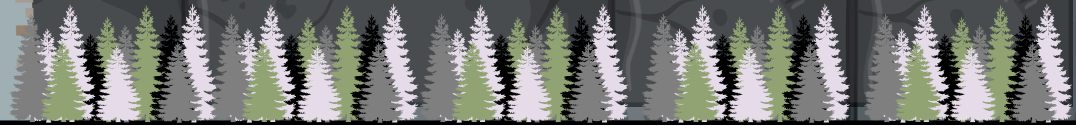
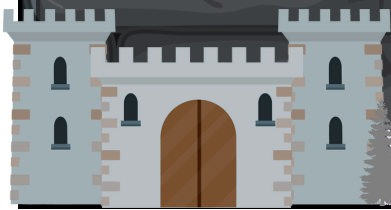


Are you also a fan of wearing fun clothing and eating delicious candy? Well, you're in luck!! EDPS is hosting their second annual **HALLOWEEN COSTUME CONTEST!**

Dig into your closets and find your best costume pieces, or throw together a closet cosplay for Halloween. Then, stop by TEAC 114 on October 30th & 31st to have your photo taken in order to enter the costume contest!

The winner will receive a gift card to a local coffee shop of their choosing.

**EVERYONE** is welcome to participate!  
**GOOD LUCK & HAVE FUN!!!** Questions? Email Jules or Zee!



# EDPS Super Swap

winter warmth edition



## NOW ACCEPTING DONATIONS!

For a list of acceptable donations, visit:

<https://go.unl.edu/superswapfall2024>



Donations can be dropped off in TEAC 114 from now until November 20th

**NOVEMBER 22nd | 10am-3pm | TEAC 202**



# Next week is First Gen Week!

Did you know that 1 in 4 students at UNL are first generation?

UNL will celebrate First Gen week November 4-8th. Stay tuned for news on events happening around campus next week, including free t-shirts, button-making, and a photo booth on November 7th!



**1st**



## 2024-2025 Methodology Applications Series

The MAP Academy invites you to the final presentation of the Fall 2024 Methodology Applications Series:



### Ensuring Data Integrity Through Ongoing Monitoring and Maintenance

featuring Jungwon Eum and Amanda Prokasky

Data integrity is essential to producing reliable and valid findings. This presentation will discuss strategies for ensuring data integrity through continuous maintenance and monitoring practices specifically geared towards researchers. It will highlight the importance of establishing thorough data management plans that include regular data validation, monitoring for inconsistencies and using consistent review processes to identify potential errors. By implementing systematic checks, researchers can ensure the accuracy of datasets throughout the research lifecycle, from data collection to analysis.



November 8th  
12:00-1:30pm  
CPEH 312



## 180 Huskers ranked among the world's top researchers



The Stanford/Elevier Top 2% Scientists List is a comprehensive analysis of all peer-reviewed papers across scientific disciplines. It measures the significance of the research, including how often each study is cited in the work of other scientists. The publication is the definitive list of research that has made the most significant impact across each field of study.

**CONGRATULATIONS to Dr. Katie Edwards, Dr. Susan Swearer, Dr. Ken Kiewra (emeritus), and Dr. Sue Sheridan, who were listed among the top 2% of researchers around the world!!**



To read more and view the full list, visit:

<https://news.unl.edu/article/180-huskers-ranked-among-the-worlds-top-researchers>

# Happy Diwali!

May the light of Diwali illuminate your home & heart with happiness, peace, and prosperity!



## Weekly Wins-Day

Patrick Meyer met one of their favorite drag queens: SUGAR!!!



Sugar was on Season 15 of RPDR with her twin, Spice! The opportunity to meet Sugar was truly a highlight for Patrick.



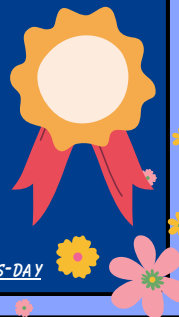
**SUBMIT YOUR WINS!**

*NO JOY IS TOO SMALL TO CELEBRATE!!*

To submit your wins, either email Jules your win with the subject line "Weekly Win" or visit the link below to fill out a Microsoft Form!



[HTTPS://GO.UNL.EDU/WEKLYWINS-DAY](https://go.unl.edu/weeklywins-day)



## Next DEMAC Meeting: November 7th @ 1pm

Visit <https://go.unl.edu/demacform> to leave feedback!

Zoom Link: <https://unl.zoom.us/j/92407153419>





# School Psychology Anti-Racism UNconference

An UNconference is a participant-driven gathering that seeks to dismantle hierarchical structures and co-create knowledge and resources.

We hope to uproot school psychological practices that perpetuate systems of racism and oppression. You, your ideas, and your work and your contribution are VITAL to making this happen. UNconferences are active—you are signing up to attend, participate, and possibly even facilitate some of the discussions.

Nov. 17th | 11am-4pm | Webinar

**CLICK HERE TO REGISTER & LEARN MORE!**


## 2024 UNconference

interactive

NO COST

anti-oppression

Sunday  
17 Nov

  
DIVISION OF SCHOOL PSYCHOLOGY PRESENTS  
**UPROOTING SCHOOL PSYCHOLOGY**

**The Turner Unified School District has open positions available for December graduates!**

This district is located in the KC metro area, has a strong mentoring program, and a competitive starting salary (over \$50k).



**They are currently looking for school psychologists, school counselors, and school social workers.**

**Interested? Learn more here:**

<https://www.turnerusd202.org/departments/human-resources>

**NEED TO REQUEST MATERIALS FROM CSPC?**



**Microsoft Form Link:**

<https://go.unl.edu/cspcmaterials>



# Upcoming Office Hours

Oct. 31–Nov. 6, 2024

Thurs. Oct 31: 9–10am

Fri. Nov. 1: 9–10am (via Zoom)

Mon. Nov. 4: 4:30–5pm

Tues. Nov. 5: 1–2pm

Wed. Nov. 6: 12–1pm

Susan Swearer, Ph.D., LP

Chairperson

Department of Educational Psychology  
University of Nebraska-Lincoln

## Need to reserve a room?

<https://tinyurl.com/TEACRoomRes>

\*Note: requests must be submitted no later than 48hrs before your reservation request

Questions? Ask Zee!



## NEED TO MEET WITH JULES?

Please email them to set up an appointment!

*\*NOTE: JULES IS UNABLE TO MEET ON WEDNESDAYS*



# I WANT TO BELIEVE