

Weekly Wednesday

Department of Educational Psychology

What's Inside:

- 1) Top Stories
- 2) Get to Know Us
- 3) Around Campus
- 4) Upcoming Events
- 5) The Week Ahead



Masters Comprehensive Exam

(MA COMPS) **OCTOBER 3rd**

The next round of MA COMPS will be offered on Friday, October 3rd. The deadline to register for the October COMPS is **FRIDAY, SEPTEMBER 26TH at 4pm.**

To register for the MA COMPS, please visit our website to download your registration form: <https://go.unl.edu/edpscomps>

Please send your completed registration form to Jules via email. Registration is not complete until all parties have signed your registration form.

LATE APPLICATIONS WILL NOT BE ACCEPTED.

If you fail to register by 4pm on the established deadline, you will have to wait until March 2026 to take the MA COMPS.

If you require testing accommodations, you must have accommodations on file with SSD and submit your accommodation paperwork at the same time you submit your COMPS registration form.

All Masters Comprehensive Exams will be offered via Canvas. Students must have Respondus Lockdown Browser on their computers in order to take the exams. If you do not have a laptop with access to Respondus Lockdown Browser, you may borrow one from HuskerTech for Free.

Please visit the following link to learn how to checkout a laptop from Huskertech: <https://nusupport.nebraska.edu/TDClient/33/Portal/Requests/ServiceOfferingDet?ID=19>

Settling into your office nicely?

Please remember that all graduate students, faculty, and staff are responsible for their own accumulated office trash & recycling.

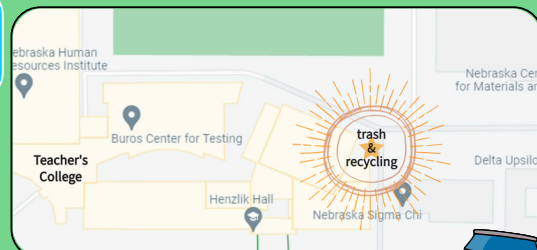
IT IS YOUR RESPONSIBILITY TO TAKE OUT YOUR OWN TRASH & RECYCLING. IT IS NOT THE RESPONSIBILITY OF FACILITIES, MAINTENANCE, OR EDPS STAFF.

The dumpsters are located to the south of Mabel Lee Recreation Fields near the driveway between Henzlik and Nebraska Sigma Chi. Please see the image below for a description of where to place your trash & recycling.

ALL office trash & recycling must be disposed in the dumpsters behind Henzlik. Although you may use the trash receptacles in the hallway, those bins are NOT to be used for personal office trash.

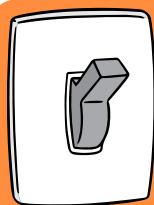


Need a trash bag? Ask Zee or Jules!



For plastic & aluminum recycling, please utilize the trash bins located in the hallways throughout the building.

Questions? Email Jules or Zee!



Friendly reminder that if you access the EDPS Office outside of business hours (9-5), and turn on a light, PLEASE TURN IT OFF WHEN YOU LEAVE!

Jules Meyers

Graduate Student Coordinator (they/them) & Administrative Associate

What songs/albums are on repeat for you right now?

Anything by Haute & Freddy...I'm obsessed with them! All of Hayley Williams' new songs. And of course, Steely Dan. Always Steely Dan.

What is a movie you are always down to watch, no matter how many times you've seen it?

MOONSTRUCK!!!



Describe your personal style in 3 words

Whimsical, Vibrant, & Layered



What's one of the best books you've read recently?

I read *Monstrilio* by Gerardo Sámano Córdova in July, and I haven't been able to stop thinking about it. It's haunting me in the best way.

Do you have any hobbies?

I am a hand embroidery artist, and I'm also a big fan of collaging. I also set aside time every week to write snail mail to my friends! I LOVE sending snail mail!! I'm also a big reader. My goal this year is 42 books.

Fun fact: Jules is about to finish their 32nd book of the year!



What are some things you love about EDPS?

I tell folks all the time that everything I do, I do for our students. It has always a dream of mine to work in academia, and I feel incredibly lucky to have the position I do. College is an absolutely life-changing time, and I feel immensely honored to be a resource and guide for students as they chase after their dreams!

Get to know us: EDPS Office Staff

Zee Cronin

Office Associate

(she/her)



What are your favorite activities to do around Lincoln? Explore and hike around the state parks, attend concerts at The Mill or Fermented Fridays, or go to the Lincoln or Omaha Zoo!

Fun fact: The Desert Dome is the world's largest indoor desert!!!



Bonus fun fact: The Omaha Zoo is one of the largest in the nation!

Where is your favorite place you've ever travelled? (Or lived?)

My favorite place I've traveled to is Corralejo, Fuerteventura in the Canary Islands. Pure Bliss. AMAZING food.

What's one of the best books you've read recently?

All-time favorite book: *The Alchemist*, by Paulo Coelho.

Recently, I really enjoyed *An Outsiders Guide to Humans*, by Dr. Camilla Pang.

What is a movie you are always down to watch, no matter how many times you've seen it?

While You Were Sleeping

What's your go-to karaoke song?

Son of a Preacher Man



What are some things you love about EDPS?

The community and support we all bring to each other on a daily basis. And also, our Halloween decorations and costume contest.



RESEARCH INTEGRITY WEEK

SEPTEMBER 22-26

The inaugural Research Integrity Week is an opportunity for the Office of Research and Innovation to highlight the importance of compliance, integrity and security in carrying out the university's research mission.

As part of Research Integrity week, informal zoom sessions will be offered to anyone interested in speaking with experts from OR&I about specific project needs or other available research resources. Registration to attend is required, please sign up for one of two sessions:

- Tuesday, September 23, 2025, 11am-12pm
- Thursday, September 25th, 2pm-3pm

CLICK HERE TO LEARN MORE/REGISTER!



MENTORSHIP ROUNDTABLE

The Mentorship Roundtable is a unique opportunity for students to connect with seasoned entrepreneurs and experienced coaches. This event is designed to provide valuable insights, expert advice, and meaningful connections in an engaging setting. Whether you're exploring career paths, seeking industry knowledge, or looking for fresh perspectives on your entrepreneurial journey, the Mentorship Roundtable offers the chance to interact with inspiring leaders who are eager to share their expertise and experiences.

October 8, 2025

5-7 pm

Howard L. Hawks Hall

Henrickson Family Atrium

Register by noon on September 29, 2025

REGISTER



THE WILLA CATHER DINING HALL PRESENTS...

Cultural Cuisine Night: OKTOBERFEST

A CELEBRATION OF GERMAN CUISINE

Join the Willa Cather Dining Center for another installment of our cultural cuisine nights featuring delicious tradition and festive flavors as we celebrate Oktoberfest, Germany's world-famous cultural festival!

Expect activities include Polka music, pretzel necklaces, stein holding contests, potato sack races, a "beer" garden, and more!

The menu will feature:

Bratwurst, Pork Schnitzel, Sauerbraten, Grilled portobello mushrooms, German potato salad, Spaetzle, Sweet & sour cabbage, German cucumber salad, Obatzda Pumpnickel & Rye, Soft Pretzels, and Black Forest cake!

Learn more HERE!



WILLA CATHER DINING CENTER PRESENTS:
CULTURAL CUISINE NIGHT
IN PARTNERSHIP WITH ISSO AND OASIS

OKTOBERFEST
A CELEBRATION OF GERMAN CUISINE

OCT
THURSDAY 9 4:30-7PM
2025

JOIN US FOR AN EVENING OF
CELEBRATING GERMAN CUISINE AND
ENJOYING OUTDOOR ACTIVITIES!

Lecture: Sex, Science, and Forms of Defiance

Humanities on the Edge

Presented by Dr. Jeanne Vaccaro, Assistant Professor of Women, Gender, and Sexuality Studies at the University of Kansas

Humanities on the Edge is a speaker series co-founded by Dr. Marco Abel and Dr. Roland Végső. Founded in 2010, the series is now in its 16th year, and its mission remains the same: to promote cross-disciplinary conversation and theoretical research in the Humanities.

September 18, 2025

5:30-7pm

**Sheldon Museum of Art;
Ethel S. Abbott Auditorium**

**Click here to
learn more!**

**The talk is free and
open to the public!**



INNOVATION CHALLENGE

Friday, Sept. 26th | 11am-6pm | Hawks Hall 111

***Team Up. Think big.
Build bold solutions.***

All you need is curiosity, creativity, and a willingness to dive in. No business idea or technical background needed.

**Register by noon on Tuesday,
Sept. 23. Lunch provided!
Scan the QR Code or visit
go.unl.edu/innovationchallenge**



FREE ZOOM TRAINING! ADVANCING NEUROPSYCHIATRIC CARE: CONNECTING BRAIN INJURY TREATMENT TO BETTER OUTCOMES

Brain injuries are a significant yet often overlooked contributor to neuropsychiatric symptoms (NPS), such as depression, anxiety, cognitive decline, and agitation. These symptoms can develop regardless of the injury's severity and frequently persist over time. This seminar series will focus on the following topics: recognizing behavioral, emotional, and cognitive symptoms in patients with brain injury; prescribing medications for brain injury-related symptoms; providing supportive psychotherapy and cognitive-behavioral therapy; educating and supporting families of patients with brain injury.

**THURSDAY, OCT. 9TH
11AM-1PM CENTRAL
VIA ZOOM**

REGISTER AT

GO.UNL.EDU/REG_TBIPART1





Upcoming Office Hours

September 18-24, 2025

Thurs. Sept. 18: 2-3pm

Fri. Sept. 19: 2-3pm

Mon. Sept. 22: 2:30-3pm

Tues. Sept. 23: 1-2pm

Wed. Sept. 24: 1-2pm

Susan Swearer, Ph.D., LP
Chairperson
Department of Educational Psychology
University of Nebraska-Lincoln

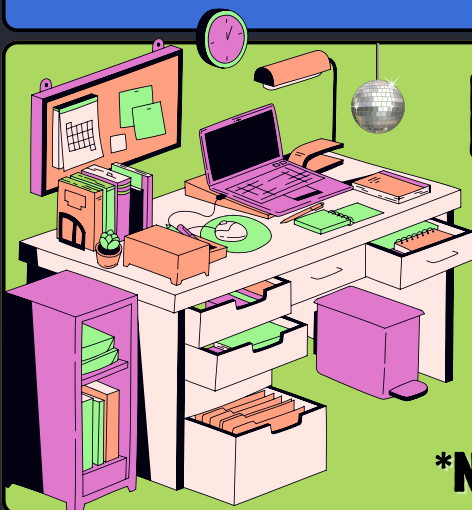


Need to reserve a room?

<https://tinyurl.com/TEACRoomRes>

*Note: please submit your request no later than 48hrs before your reservation!

Questions? Ask Zee!



Need to meet w/ Jules?

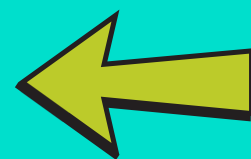
If you would like to meet with Jules, you must send them an email to set up an appointment.

Appointments available in-person and via Zoom

*Note: Jules is unable to meet on Wednesdays



need to request materials from CSPC?



Microsoft Form Link: <https://go.unl.edu/cspcmaterials>