

*September 3, 2025*

*Volume 159*

# Weekly Wednesday

Department of Educational Psychology

## What's Inside:

- 1) Top Stories
- 2) Happening on Campus
- 3) Funding Opportunities
- 4) Learning Opportunities
- 5) September Happiness
- 6) The Week Ahead







# Welcome Dean Jeff Reese!

Dr. Reese is the new Dean of CEHS. His tenure home is in EDPS. Get to know a little bit more about him below!

Describe your personal style in 3 words

Empathetic  
Semi-funny  
Goal-oriented

If you could only eat one food for the rest of your life, what would it be?

Chocolate covered pretzels or almonds...maybe pepperoni pizza!



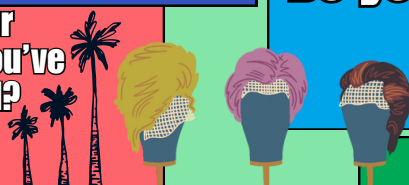
Do you have any hobbies?

Golf, and running slow!



Where is your favorite place you've ever travelled?

Santa Barbara, California



What is your favorite dad joke?

Too many to choose from, but here's one:  
There was a break-in at the wig factory. Police are combing the area.

What are you most looking forward to about your time in CEHS?

Dr. Reese is looking forward to meeting and developing relationships with faculty, staff, and students. His hope is to support them in their pursuit of success.

WE ARE SO GLAD YOU ARE HERE!

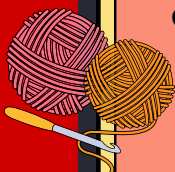
What is your go-to coffee or tea order?

Usually just black coffee, but on special occasions, Dr. Reese treats himself to a mocha.



Do you have any hobbies?

Lots! Janet is very creative. She loves her Cricut, drawing, watercolors, crochet, interior design, and sticker collaging.



Where is your favorite place you've ever travelled or lived?  
**KNOXVILLE, TENNESSEE!**

Janet went to grad school at UTK and spent the majority of her 20s thriving in Knoxville. One of the most beautiful places in the country!



(Jules agrees! Knoxville rocks!!!)

Describe your personal style in 3 words

Cozy  
Trendy  
Capsuled

What are you most looking forward to about your time in the CSPC/EDPS?

Janet is looking forward to continuing to foster growth in the CSPC. She's excited about introducing new testing opportunities, as well as working alongside colleagues and graduate students to make the clinic the best it can be!



What is your go-to coffee or tea order?

Iced coffee ALWAYS! Janet loves an oat milk shaken espresso too, as well as iced matcha.

Janet is the new director of the CSPC here in EDPS. We're so glad you're here!

**Welcome, Janet Schwartz-Micheaux!**







Join us in honoring the life and legacy of Patti Jo Farritor at a special bench dedication in the Teachers College Hall Courtyard (lower level, follow signs for the Buros Center for Testing). The event will be held from 12-1 p.m. on Friday, Sept. 19 with the dedication ceremony beginning at 12:15 p.m.

# OGS WORKSHOPS

Did you know that the Office of Graduate Studies has a list of workshops they'll be offering this AY?  
**CHECK IT OUT!**

<https://graduate.unl.edu/graduate-support/workshops/>



## INNOVATION CHALLENGE

Friday, Sept. 26<sup>th</sup> | 11am-6pm | Hawks Hall 111

***Team Up. Think big. Build bold solutions.***

All you need is curiosity, creativity, and a willingness to dive in. No business idea or technical background needed.

***Register by noon on Tuesday, Sept. 23. Lunch provided! Scan the QR Code or visit [go.unl.edu/innovationchallenge](https://go.unl.edu/innovationchallenge)***





# Job Opportunity!

**N**  
TRIO ETS

The UNL Office of TRiO programs has recently posted a new job offering within their office. Their program, Educational Talent Search, is looking for individuals interested in working as a full-time **EDUCATION SPECIALIST!**

**Educational Talent Search (ETS) engages, empowers and supports potential first generation college and under-served scholars who have the desire and potential to pursue an education beyond high school. They provide access to academic, social, and financial resources to over 900 students in the local Lincoln Public Schools (LPS).**

The TRiO office has historically been very flexible with employees taking graduate coursework!

**Interested? Learn more and apply here:**  
**<https://employment.unl.edu/postings/98025>**

## Chancellor's Graduate Research Grants

The Chancellor's Graduate Research Grant is a transformative investment opportunity that directly advances the University of Nebraska-Lincoln's mission of research excellence, student success, and global academic prominence. This comprehensive program offers structured financial support to graduate students, delivering measurable returns through enhanced research output, improved graduation rates, and a heightened university reputation.

### Who is eligible?

Graduate and Professional students from the Graduate College of the University of Nebraska-Lincoln who are enrolled at the time of application.

1. Applicants must be enrolled in a degree program at the University of Nebraska-Lincoln and be in good academic standing.
2. All travel must be completed before graduation.
3. Students are eligible to receive up to one travel award per academic year. However, they may apply multiple times, provided they submit only one application per semester (e.g., Fall, Spring, or Summer). Previous awardees will be considered secondary to first-time applicants.
4. Applicants who have requested and received a refund for the University Program and Facilities Fee (UPFF) Fund A during the current or previous semester shall not be eligible to apply for or receive the Chancellor's Graduate Research Grant.

### TWO FUNDING OPPORTUNITIES



**Travel Awards** – Support for conference travel and other approved professional activities (per application guidelines). Applications open August 18 and close September 15.

<https://go.unl.edu/chancellor-travel-award-2025>

**Research Activity Awards** – Funding for research projects that directly contribute to the completion of your Master's or PhD degree. Applications are accepted on a rolling basis until December 5.

<https://go.unl.edu/chancellor-research-activities-grant>

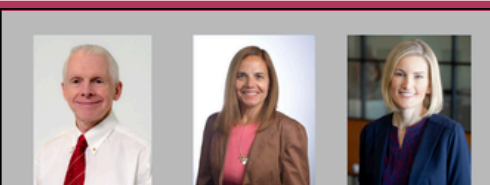
**Questions? Email [gsa@unl.edu](mailto:gsa@unl.edu)**



## Upcoming Speaker Event: Dr. Daniel H. Robinson

### The Latest Education Miracle: Fool Me Ten Times, Shame on Me

The Buros Center for Testing welcomes Dr. Daniel H. Robinson for a lecture on Friday, September 12 at 2:30 p.m. in Room 112, Teachers College Hall. A faculty member at the University of Texas at Arlington, Dr. Robinson will examine recurring trends in education reform and our tendency to embrace familiar promises. He is widely published, has held multiple editorial roles, and received his doctoral degree in Educational Psychology from UNL. The event is free and open to the public.



#### ASSESSMENT OF TRAUMA IN CHILDREN AND YOUTH WEBINAR SERIES

#### Empirically Supported Methods for the Assessment of Complex Trauma, Complex PTSD, and Developmental Trauma Disorder With Children and Youth

*with Dr. Julian D. Ford, PhD, ABPP*

**WEDNESDAY, SEPTEMBER 10, 2025**  
**11:00 A.M. – 12:30 P.M. CDT**

This intermediate presentation provides an overview of the evolving definitions of complex psychological trauma, complex post-traumatic stress disorder (CPTSD), and developmental trauma disorder (DTD), as well as empirically supported assessment measures for school-aged children, adolescents, and young adults. The presentation will highlight the applicability of trauma-focused assessment for children and youth who are often overlooked when primarily diagnosed with other behavioral disorders and serious emotional disturbance (such as anxiety, mood, disruptive behavior, dissociative, and substance use disorders). A broad overview of the empirically supported trauma-focused therapies for children and youth will be provided.

**CLICK  
HERE TO  
LEARN  
MORE!**

**Sept. 16, 2025 at 9:00am**

#### EMPIRICALLY-SUPPORTED TREATMENTS FOR ADHD IN CHILDREN: HELPING PARENTS, KIDS, AND TEACHERS DO THEIR BEST

*With Drs. Margaret Sibley & Richard Gallagher*

This presentation will review best practices and professional practice guidelines for the screening, diagnosis, and non-pharmacological treatment of Attention Deficit Hyperactivity Disorder (ADHD) in childhood and adolescence. The first block of the presentation will be devoted to screening and diagnosis and will cover variations in practices by clinical setting, age, gender, and presentation. Next, an overview of treatment best practices will be provided separately for the childhood and adolescent contexts. Question and answer time will be allotted at the end.

**REGISTER NOW**



[https://us02web.zoom.us/webinar/register/WN\\_hbm3BKdiT-G8pcOkkrkdOw#/registration](https://us02web.zoom.us/webinar/register/WN_hbm3BKdiT-G8pcOkkrkdOw#/registration)





## September 2025 Happiness Calendar

This month, celebrate growth and change.  
Keep up with the latest on the science of connection, compassion, and happiness by subscribing to our newsletters.

SUNDAY	MONDAY	TUESDAY	WEDNESDAY	THURSDAY	FRIDAY	SATURDAY
	1 Celebrate other people's good news.	2 Bring compassion to work with you.	3 Be courageous.	4 Embrace the process of aging.	5 Let go of shame by telling your story.	6 Imagine what your best possible life looks like.
7 Acknowledge when you aren't sure about something.	8 Prioritize your well-being with our Pathway to Happiness.	9 For a better relationship, work on yourself.	10 Try to learn from all your experiences.	11 Let people know that you see them and care about them.	12 Seek out the messy truth, not the easy answers.	13 Ask for help when you need it.
14 Listen to music together.	15 During transitions, take care of your mental and physical health.	16 Keep your goals and intentions in mind.	17 Give people space to open up to you.	18 Pay attention to your breathing.	19 Solve difficult problems together.	20 Calm your nervous system with physical touch.
21 Remember, you don't have to handle it all on your own.	22 Find gentleness in the process of growing and improving yourself.	23 Witness suffering with compassion.	24 Get a fresh start with our Science of Happiness course.	25 Join a supportive community.	26 Do you love compassionately? Take our quiz to find out.	27 Beware of disinformation.
28 Sit with unease and discomfort.	29 Be vulnerable enough to share who you are.	30 Identify your deepest values and passions.			 <b>Greater Good Science Center</b> <small>ggsc.berkeley.edu greatergood.berkeley.edu</small>	

## This month, celebrate growth & change

“All that you touch  
You Change. All  
that you Change  
Changes you. The  
only lasting truth  
is Change.”

-Octavia E. Butler,  
*Parable of the Sower*

## Weekly WINS-day



Ali Shull, a DLS student, was awarded the Buffett Early Childhood Fellowship!!! Her focus for the next year is on her research & finishing her dissertation. Ali's project analyzes how exposure to parenting content on social media impacts parental stress, self-efficacy, and perceived parent-child relationship quality.

Jules has been learning a new skill!

During the holiday weekend, Jules started teaching herself how to visibly mend their denim jacket using the Japanese mending technique of Sashiko



IF IT'S WORTH WEARING,  
IT'S WORTH REPAIRING!!!



# Upcoming Office Hours

September 4-10, 2025

Thurs. Sept. 4: No Office Hours

Fri. Sept. 5: No Office Hours

Monday, Sept. 8: 2-3pm

Tuesday, Sept. 9: 10-11am

Wed. Sept. 10: No Office Hours

Susan Swearer, Ph.D., LP  
Chairperson  
Department of Educational Psychology  
University of Nebraska-Lincoln

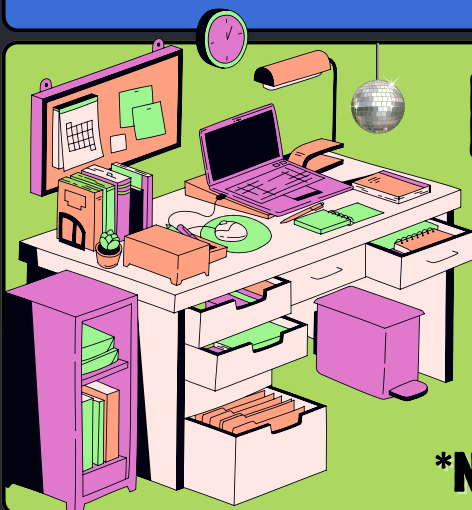


## Need to reserve a room?

<https://tinyurl.com/TEACRoomRes>

\*Note: please submit your request no later than 48hrs before your reservation!

Questions? Ask Zee!



## Need to meet w/ Jules?

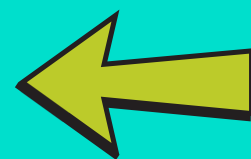
If you would like to meet with Jules, you must send them an email to set up an appointment.

Appointments available in-person and via Zoom

\*Note: Jules is unable to meet on Wednesdays



need to request materials from CSPC?



Microsoft Form Link: <https://go.unl.edu/cspcmaterials>



*September 10, 2025*

*Volume 160*

# Weekly Wednesday

Department of Educational Psychology

## What's Inside:

- 1) Top Stories
- 2) News
- 3) Around Campus
- 4) Student Support
- 5) The Week Ahead





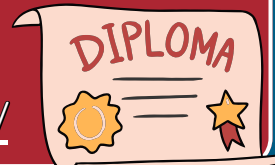
# Planning to graduate in December?



The deadline to apply for December graduation is **THIS FRIDAY, September 12th!**

To learn more, visit the link below:

<https://registrar.unl.edu/student-resources/graduation-application/online-graduation-application-instructions/>



## IMPORTANT!!

The most frequently missed question on the Graduate Student Handbook Quiz: **HOW OFTEN ARE STUDENTS EXPECTED TO CHECK THEIR UNL EMAIL?**

the answer ...

**EVERY DAY**  
MULTIPLE TIMES A DAY

Don't forget! We send a LOT of important updates via email. It is especially important to check your email frequently to keep up to date on all pertinent information.



Jules & Zee wanted to provide another reminder about their respective roles within EDPS. Please see below for a breakdown of their roles.



### Zee

she/her  
Office Associate  
[mcronin6@unl.edu](mailto:mcronin6@unl.edu)



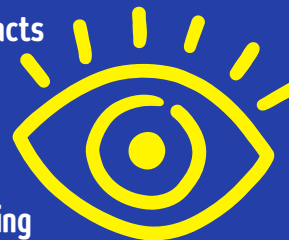
- Room Reservations
- Door Access & Key Checkout
- Class Edits & Scheduling
- Permission Codes
- Building Maintenance
- General Office Inquiries

### Jules



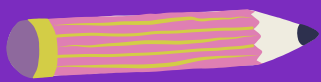
they/them  
Graduate Student Coordinator & Administrative Associate  
[jmeyers19@unl.edu](mailto:jmeyers19@unl.edu)

- EDPS Website Updates
- GTA, GRA, and LecT Contracts
- Fellowship & Award Contracts
- Weekly Wednesday
- Email Listservs
- Departmental Event Planning
- Purchasing Needs & Reconciliation





# Masters Comprehensive Exam



(MA COMPS)

next exam:

# OCTOBER 3rd

The next round of MA COMPS will be offered on Friday, October 3rd. The deadline to register for the October COMPS is **FRIDAY, SEPTEMBER 26TH at 4pm.**

To register for the MA COMPS, please visit our website to download your registration form: <https://go.unl.edu/edpscomps>

Please send your completed registration form to Jules via email. Registration is not complete until all parties have signed your registration form.

**LATE APPLICATIONS WILL NOT BE ACCEPTED.**

If you fail to register by 4pm on the established deadline, you will have to wait until March 2026 to take the MA COMPS.

**If you require testing accommodations, you must have accommodations on file with SSD and submit your accommodation paperwork at the same time you submit your COMPS registration form.**



All Masters Comprehensive Exams will be offered via Canvas. Students must have Respondus Lockdown Browser on their computers in order to take the exams.

**If you do not have a laptop with access to Respondus Lockdown Browser, you may borrow one from HuskerTech for Free.**

Please visit the following link to learn how to checkout a laptop from Huskertech:

<https://nusupport.nebraska.edu/TDClient/33/Portal/Requests/ServiceOfferingDet?ID=19>



Join us in honoring the life and legacy of Patti Jo Farritor at a special bench dedication in the Teachers College Hall Courtyard (lower level, follow signs for the Buros Center for Testing). The event will be held from 12-1 p.m. on Friday, Sept. 19 with the dedication ceremony beginning at 12:15 p.m.



## BUROS LIBRARY HOURS - FALL 2025

Monday: 9am-12pm; 1-4pm

Tuesday: 8am-4pm

Wednesday: 9:30am-12:30pm; 1:30-4:30pm

Thursday: 8am-12pm

Friday: 11am-3pm



Need a reminder on Buros' library policies?

<https://buros.org/library/policy/>

# ***A Practical Guide to Integrating Evidence-Based, Non-Specialist Delivered, Psychological Interventions into Existing Services across the Globe: an Introduction to W.H.O.'s Psychological Interventions Implementation Manual***

## ***free live webinar***

***Presented by: Dr. Ken Carswell***



This presentation will provide an introduction to the WHO's Psychological Interventions Implementation Manual and provide examples of how interventions have been implemented in different settings. The Psychological Interventions Implementation Manual supports delivery of evidence-based non-specialist delivered, interventions, is open access and is designed for use in a range of settings.



***September 17th from 3-4pm***

***CLICK  
HERE TO  
REGISTER***



***JOIN US!***

**Monday, September 15  
227 Carolyn Pope Edwards Hall  
2 - 3:30pm**

*Shattering the Literacy Hierarchy:  
No More Reading at the Bottom of the Well  
Dr. Alfred Tatum*

In this talk, Dr. Tatum will offer conceptual and practical framings for shattering literacy hierarchies that require a paradigmatic shift in teaching and educational leadership to have more students take up residence at the top of the reading well characterized by advanced literacy outcomes. He will discuss six considerations for teaching foundational skills and foundational texts to shatter hierarchies that chisel at students' humanity, cementing tiered literacy outcomes. Attention will be given to the roles of texts for students in grades 3-12.

## **Upcoming Speaker Event: Dr. Daniel H. Robinson** **The Latest Education Miracle: Fool Me Ten Times, Shame on Me**

The Buros Center for Testing welcomes Dr. Daniel H. Robinson for a lecture on Friday, September 12 at 2:30 p.m. in Room 112, Teachers College Hall. A faculty member at the University of Texas at Arlington, Dr. Robinson will examine recurring trends in education reform and our tendency to embrace familiar promises. He is widely published, has held multiple editorial roles, and received his doctoral degree in Educational Psychology from UNL.

**The event is free and open to the public.**





# Red Talks

## Understanding Paystubs & Firefly

OGS is excited to present Red Talks, a series of live, virtual webinars that will take place during the fall semester. These sessions are crafted to provide valuable information & are tailored specifically to support graduate & professional students.

The first Red Talk of the semester will be an informative session designed to help you better understand the components of your paystub and how to effectively navigate Firefly.



### September 17th 12-1pm

A Zoom link will be provided to those who register for the course. To register, [CLICK HERE!](#)

**QUESTIONS?** via Zoom

contact Sophie Kowalski at [stonjeskowalski2@unl.edu](mailto:stonjeskowalski2@unl.edu)

## News from the UNL Writing Center

In this era of ubiquitous generative AI tools, please remember there's an easy-to-access **FREE** service on campus where you can talk to another friendly human about your writing!

There are three ways you can connect with a Consultant: In Person, Online (a real-time, video conversation), and eTutoring (email feedback). In-person Writing Center appointments are held in Andrews Hall 102. Writers may choose between 25- and 50-minute appointments. To learn more about online options and view video tutorials, visit:

<https://writing.unl.edu/online-writing-center-services/>

The Writing Center also offers **accountability appointments**, in which you can sit beside a Writing Center consultant and talk as much or as little as you like about your writing. You can indicate that this is what you're looking for when you sign up for an appointment.

Sign up any time by visiting

[unl.mywconline.com](https://unl.mywconline.com)

For more information about the Writing Center, please visit

<https://writing.unl.edu/>





# Upcoming Office Hours

September 11-17, 2025

Thurs. Sept. 11: 2-3pm

Fri. Sept. 12: 1-2pm

Mon. Sept. 15: 1-2pm

Tues. Sept. 16: 2:30-3pm

Wed. Sept. 17: 12-1pm

Susan Swearer, Ph.D., LP  
Chairperson  
Department of Educational Psychology  
University of Nebraska-Lincoln



## Need to reserve a room?

<https://tinyurl.com/TEACRoomRes>

\*Note: please submit your request no later than 48hrs before your reservation!

Questions? Ask Zee!



## Need to meet w/ Jules?

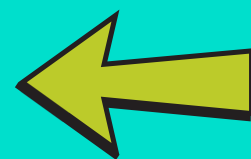
If you would like to meet with Jules, you must send them an email to set up an appointment.

Appointments available in-person and via Zoom

\*Note: Jules is unable to meet on Wednesdays



need to request  
materials  
from CSPC?



Microsoft Form Link: <https://go.unl.edu/cspcmaterials>



# **Weekly Wednesday**

**Department of Educational Psychology**

## **What's Inside:**

- 1) Top Stories**
- 2) Get to Know Us**
- 3) Around Campus**
- 4) Upcoming Events**
- 5) The Week Ahead**





# Masters Comprehensive Exam

(MA COMPS) **OCTOBER 3rd**

The next round of MA COMPS will be offered on Friday, October 3rd. The deadline to register for the October COMPS is **FRIDAY, SEPTEMBER 26TH at 4pm.**

To register for the MA COMPS, please visit our website to download your registration form: <https://go.unl.edu/edpscomps>

Please send your completed registration form to Jules via email. Registration is not complete until all parties have signed your registration form.

**LATE APPLICATIONS WILL NOT BE ACCEPTED.**

If you fail to register by 4pm on the established deadline, you will have to wait until March 2026 to take the MA COMPS.

**If you require testing accommodations, you must have accommodations on file with SSD and submit your accommodation paperwork at the same time you submit your COMPS registration form.**

All Masters Comprehensive Exams will be offered via Canvas. Students must have Respondus Lockdown Browser on their computers in order to take the exams. If you do not have a laptop with access to Respondus Lockdown Browser, you may borrow one from HuskerTech for Free.

Please visit the following link to learn how to checkout a laptop from Huskertech: <https://nusupport.nebraska.edu/TDClient/33/Portal/Requests/ServiceOfferingDet?ID=19>



## Settling into your office nicely?

Please remember that all graduate students, faculty, and staff are responsible for their own accumulated office trash & recycling.

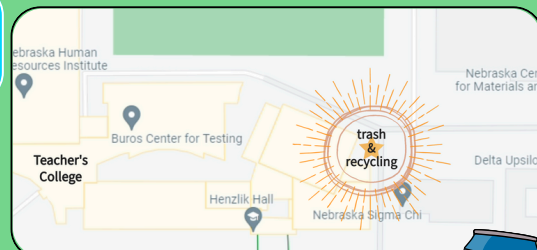
**IT IS YOUR RESPONSIBILITY TO TAKE OUT YOUR OWN TRASH & RECYCLING. IT IS NOT THE RESPONSIBILITY OF FACILITIES, MAINTENANCE, OR EDPS STAFF.**

The dumpsters are located to the south of Mabel Lee Recreation Fields near the driveway between Henzlik and Nebraska Sigma Chi. Please see the image below for a description of where to place your trash & recycling.

**ALL office trash & recycling must be disposed in the dumpsters behind Henzlik. Although you may use the trash receptacles in the hallway, those bins are NOT to be used for personal office trash.**

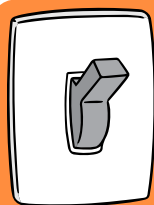


Need a trash bag? Ask Zee or Jules!



For plastic & aluminum recycling, please utilize the trash bins located in the hallways throughout the building.

**Questions? Email Jules or Zee!**



Friendly reminder that if you access the EDPS Office outside of business hours (9-5), and turn on a light, PLEASE TURN IT OFF WHEN YOU LEAVE!



# Jules Meyers

Graduate Student Coordinator (they/them) & Administrative Associate

What songs/albums are on repeat for you right now?

Anything by Haute & Freddy...I'm obsessed with them! All of Hayley Williams' new songs. And of course, Steely Dan. Always Steely Dan.

What is a movie you are always down to watch, no matter how many times you've seen it?

**MOONSTRUCK!!!**



Describe your personal style in 3 words

**Whimsical, Vibrant, & Layered**



What's one of the best books you've read recently?

I read Monstrilio by Gerardo Sámano Córdova in July, and I haven't been able to stop thinking about it. It's haunting me in the best way.

Do you have any hobbies?

I am a hand embroidery artist, and I'm also a big fan of collaging. I also set aside time every week to write snail mail to my friends! I LOVE sending snail mail!! I'm also a big reader. My goal this year is 42 books.

Fun fact: Jules is about to finish their 32<sup>nd</sup> book of the year!



What are some things you love about EDPS?

I tell folks all the time that everything I do, I do for our students. It has always a dream of mine to work in academia, and I feel incredibly lucky to have the position I do. College is an absolutely life-changing time, and I feel immensely honored to be a resource and guide for students as they chase after their dreams!

## Get to know us: EDPS Office Staff

# Zee Cronin

Office Associate

(she/her)



What are your favorite activities to do around Lincoln? Explore and hike around the state parks, attend concerts at The Mill or Fermented Fridays, or go to the Lincoln or Omaha Zoo!

Fun fact: The Desert Dome is the world's largest indoor desert!!!



Bonus fun fact: The Omaha Zoo is one of the largest in the nation!

Where is your favorite place you've ever travelled? (Or lived?)

My favorite place I've traveled to is Corralejo, Fuerteventura in the Canary Islands. Pure Bliss. AMAZING food.

What's one of the best books you've read recently?

All-time favorite book: The Alchemist, by Paulo Coelho.

Recently, I really enjoyed An Outsiders Guide to Humans, by Dr. Camilla Pang.

What is a movie you are always down to watch, no matter how many times you've seen it?

**While You Were Sleeping**

What's your go-to karaoke song?

**Son of a Preacher Man**



What are some things you love about EDPS?

The community and support we all bring to each other on a daily basis. And also, our Halloween decorations and costume contest.



# RESEARCH INTEGRITY WEEK

SEPTEMBER 22-26

The inaugural Research Integrity Week is an opportunity for the Office of Research and Innovation to highlight the importance of compliance, integrity and security in carrying out the university's research mission.

As part of Research Integrity week, informal zoom sessions will be offered to anyone interested in speaking with experts from OR&I about specific project needs or other available research resources. Registration to attend is required, please sign up for one of two sessions:

- Tuesday, September 23, 2025, 11am-12pm
- Thursday, September 25th, 2pm-3pm

**CLICK HERE TO LEARN MORE/REGISTER!**



## MENTORSHIP ROUNDTABLE

The Mentorship Roundtable is a unique opportunity for students to connect with seasoned entrepreneurs and experienced coaches. This event is designed to provide valuable insights, expert advice, and meaningful connections in an engaging setting. Whether you're exploring career paths, seeking industry knowledge, or looking for fresh perspectives on your entrepreneurial journey, the Mentorship Roundtable offers the chance to interact with inspiring leaders who are eager to share their expertise and experiences.

**October 8, 2025**

**5-7 pm**

Howard L. Hawks Hall

Henrickson Family Atrium

Register by noon on September 29, 2025

**REGISTER**



THE WILLA CATHER DINING HALL PRESENTS...

## Cultural Cuisine Night: OKTOBERFEST

A CELEBRATION OF GERMAN CUISINE

Join the Willa Cather Dining Center for another installment of our cultural cuisine nights featuring delicious tradition and festive flavors as we celebrate Oktoberfest, Germany's world-famous cultural festival!

Expect activities include Polka music, pretzel necklaces, stein holding contests, potato sack races, a "beer" garden, and more!

### The menu will feature:

Bratwurst, Pork Schnitzel, Sauerbraten, Grilled portobello mushrooms, German potato salad, Spaetzle, Sweet & sour cabbage, German cucumber salad, Obatzda Pumpnickel & Rye, Soft Pretzels, and Black Forest cake!

**Learn more HERE!**



WILLA CATHER DINING CENTER PRESENTS:  
**CULTURAL CUISINE NIGHT**  
IN PARTNERSHIP WITH ISSO AND OASIS

**OKTOBERFEST**  
A CELEBRATION OF GERMAN CUISINE

OCT  
**THURSDAY 9** 4:30-7PM  
2025

JOIN US FOR AN EVENING OF  
CELEBRATING GERMAN CUISINE AND  
ENJOYING OUTDOOR ACTIVITIES!



## Lecture: Sex, Science, and Forms of Defiance

### Humanities on the Edge

Presented by Dr. Jeanne Vaccaro, Assistant Professor of Women, Gender, and Sexuality Studies at the University of Kansas

**Humanities on the Edge is a speaker series co-founded by Dr. Marco Abel and Dr. Roland Végső. Founded in 2010, the series is now in its 16th year, and its mission remains the same: to promote cross-disciplinary conversation and theoretical research in the Humanities.**

**September 18, 2025**

**5:30-7pm**

**Sheldon Museum of Art;  
Ethel S. Abbott Auditorium**

**Click here to  
learn more!**

**The talk is free and  
open to the public!**



## INNOVATION CHALLENGE

Friday, Sept. 26<sup>th</sup> | 11am-6pm | Hawks Hall 111

***Team Up. Think big.  
Build bold solutions.***

All you need is curiosity, creativity, and a willingness to dive in. No business idea or technical background needed.

***Register by noon on Tuesday,  
Sept. 23. Lunch provided!  
Scan the QR Code or visit  
[go.unl.edu/innovationchallenge](http://go.unl.edu/innovationchallenge)***



## FREE ZOOM TRAINING! ADVANCING NEUROPSYCHIATRIC CARE: CONNECTING BRAIN INJURY TREATMENT TO BETTER OUTCOMES

Brain injuries are a significant yet often overlooked contributor to neuropsychiatric symptoms (NPS), such as depression, anxiety, cognitive decline, and agitation. These symptoms can develop regardless of the injury's severity and frequently persist over time. This seminar series will focus on the following topics: recognizing behavioral, emotional, and cognitive symptoms in patients with brain injury; prescribing medications for brain injury-related symptoms; providing supportive psychotherapy and cognitive-behavioral therapy; educating and supporting families of patients with brain injury.

**THURSDAY, OCT. 9TH  
11AM-1PM CENTRAL  
VIA ZOOM**

**REGISTER AT**

**[GO.UNL.EDU/REG\\_TBIPART1](http://GO.UNL.EDU/REG_TBIPART1)**





# Upcoming Office Hours

September 18-24, 2025

Thurs. Sept. 18: 2-3pm

Fri. Sept. 19: 2-3pm

Mon. Sept. 22: 2:30-3pm

Tues. Sept. 23: 1-2pm

Wed. Sept. 24: 1-2pm

Susan Swearer, Ph.D., LP  
Chairperson  
Department of Educational Psychology  
University of Nebraska-Lincoln

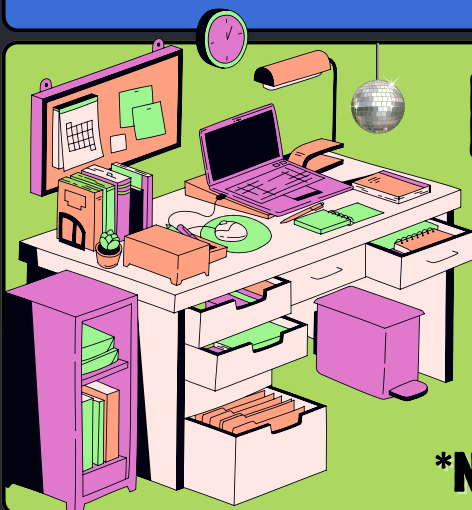


## Need to reserve a room?

<https://tinyurl.com/TEACRoomRes>

\*Note: please submit your request no later than 48hrs before your reservation!

Questions? Ask Zee!



## Need to meet w/ Jules?

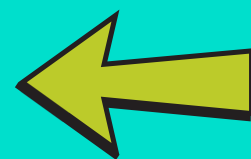
If you would like to meet with Jules, you must send them an email to set up an appointment.

Appointments available in-person and via Zoom

\*Note: Jules is unable to meet on Wednesdays



need to request materials from CSPC?



Microsoft Form Link: <https://go.unl.edu/cspcmaterials>



*September 24, 2025*

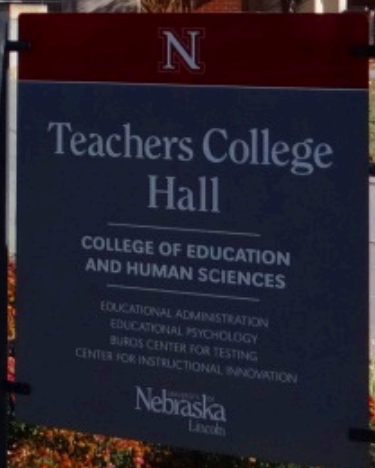
*Volume 162*

# Weekly Wednesday

Department of Educational Psychology

## What's Inside:

- 1) Top Stories
- 2) Get to Know Us
- 3) Weekly WINS-day
- 4) Research Opportunities
- 5) Training & Webinars
- 6) The Week Ahead





# DON'T FORGET!!!!!!

The next round of MA COMPS will be offered on Friday, October 3rd.

The deadline to register for the October

COMPS is **FRIDAY, SEPTEMBER 26TH at 4pm.**

**LATE APPLICATIONS ARE NOT ACCEPTED.**

If your registration form arrives after 4pm on Friday, it will be considered late, and you will not be able to register for the COMPS until March 2026.

To register for the MA COMPS, please visit our website to

download your registration form: <https://go.unl.edu/edpscomps>

Once your form is complete, send it to Jules via email. Be sure to put in the body of your email that you are registering for the COMPS! Registration is not complete until all parties have signed your registration form and you have sent your form to Jules.

**ALL MASTERS COMPREHENSIVE EXAMS WILL BE OFFERED VIA CANVAS. STUDENTS MUST HAVE RESPONDUS LOCKDOWN BROWSER ON THEIR COMPUTERS IN ORDER TO TAKE THE EXAMS.**

If you do not have a laptop with access to Respondus Lockdown Browser, you may borrow one from HuskerTech for Free.

Please visit the following link to learn how to checkout a laptop from Huskertech:

<https://nusupport.nebraska.edu/TDClient/33/Portal/Requests/ServiceOfferingDet?ID=19>



Looking for some study buddies before the COMPS?

Dr. Jordan Wheeler is hosting review sessions for all students who are taking the Measurement portion of the COMPS.

This is an amazing opportunity to study together and ask clarifying questions about potential topics and concepts that may be covered in the exam. You are also welcome to join the group and independently study, if you need a body double!

**WHEN & WHERE** // // // // //

Tuesday, September 30th | 9:00–11:00 AM | TEAC 113

Wednesday, October 1st | 4:00–6:00 PM | TEAC 249

Drop in any time during these sessions! No RSVP required.

Questions? Email Jordan Wheeler ([jwheeler21@unl.edu](mailto:jwheeler21@unl.edu))





# KELLAN WILLET

NICPP & CSPC Assistant Program Manager He/Him



Kellan Willet

If you could have one superpower, what would it be?  
*Telekinesis! You can fly, have super strength, and basically do things without moving.*



Describe your personal style in three words.

**trying my best!**

What's your favorite "dad joke"?

*What's a pirate's favorite letter?*

*Ye think it'd be RRRRRRR, but no! 'Tis the C!*



What's your go-to coffee or tea order?

*My go to coffee order is either black coffee (medium roast) or an adult's chocolate milk: Cocoa Mocha Iced Signature Latte (Dunkin')*



What's something you've done recently that you're really proud of?

*I recently had to do a huge project for the NICPP. Every 10 years, we have to compile data for an APA self-study and site visit, and we are just getting the site visit finalized! This was very time consuming, but I am so proud to be almost finished with this project.*

Tell me something fun about yourself—anything at all!

*I love to help people get involved in Dungeons & Dragons, so if you've ever wanted to learn or play, please let me know and I can help run a session!*

What are your favorite activities to do around Lincoln?

*I love to do Craft Axe, and I love the biking trails around Lincoln! I go roller skating with my fiancé when it's nice out. She's on Lincoln's No Coast Roller Derby team, and I love to help ref their matches.*



## Get to know us: CSPC Staff

# MILLIE MYERS

She/Her

CSPC Graduate Assistant



Millie Myers

What's one of the best books you've read recently?

*I really enjoyed "Stiff: The Curious Lives of Human Cadavers" by Mary Roach! Not a topic I would normally be drawn to, but the author has an engaging and humorous writing style!*



What's something you've done recently that you're really proud of?

*I recently hung the curtains that have been languishing in my basement for the past 5 years!*

Describe your personal style in three words

**LAZY!**

*(I can do it in one word)*



Where is your favorite place you've ever travelled (or lived)?

*I wish I had a more interesting origin story! My mom is currently on a five-year work visa in London, Zurich, and Prague, so I am vicariously living through her adventures!*



What are some things you love about EDPS/the CSPC?

*It's been so fulfilling to watch the Clinic grow year over year in offering new assessment and outreach opportunities. It was an impactful clinical experience for me personally, and I love watching students grow through the different phases of their training. We have an incredible number of continuing clients who return year after year through various cohorts, which speaks to the difference our students make in their lives. When I think about my "village," I couldn't have asked for a more supportive department and faculty in every aspect of my student experience at UNL.*

# EDPS CRAFTERNON

## NEXT EDPS CRAFTERNON: Friday, October 24th MORE DETAILS COMING SOON!



Kyle Burke, a former EDPS staff member (who now works in OGS) won the international autoharp competition at the Walnut Valley Folk Festival in Winfield, KS!



Kyle is the only Nebraskan to have ever placed in the International Autoharp Championship, let alone win!!! He played three pieces: In the Sweet By and By, Cripple Creek, and My Clinch Mountain Home. You can watch Kyle's performance [HERE!!!](#)

1<sup>st</sup> place winners got to choose between two professionally crafted autoharps, and Kyle chose a diatonic G-D autoharp made by Pete d'Aigle from SeaTac, WA. (Fun fact: Trixie Mattel's autoharp was also crafted by Pete d'Aigle)



## Weekly WINS-day!!!!

Jules spent their weekend upcycling some of their wardrobe, and they're really proud of how these trousers came together!





## RESEARCH PARTICIPANTS NEEDED! Supporting Immigrant-Origin Student Experiences of Wellbeing: A Photovoice Study

### Purpose:

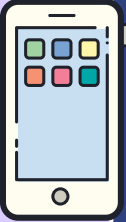
To better understand the lived experiences of immigrant-origin students and their conceptions of wellness in their personal & academic settings

### Study Overview:

You will be asked to take photographs in response to prompts regarding wellness, and also attend 5 group sessions and one follow-up interview to discuss your photographs. The study involves 12 hours of participation over Zoom. Participants will be compensated at the rate of \$25/hour.

### Eligibility:

- 19-29 years old
- Registered UNL student
- Have access to a smart phone or tablet capable of taking digital photographs
- A first-or-second-generation immigrant



### QUESTIONS?

→ [bbearss2@huskers.unl.edu](mailto:bbearss2@huskers.unl.edu)



Scan the QR code or visit the link below to take you to the survey!

[https://unlcorexmuw.qualtrics.com/jfe/form/SV\\_8IzMWGRKKDpUsvA](https://unlcorexmuw.qualtrics.com/jfe/form/SV_8IzMWGRKKDpUsvA)



Aubrey Amble, a third-year audiology doctoral student at the University of Wisconsin-Stevens Point, is conducting a research study to investigate whether students in health-related fields demonstrate knowledge and awareness of the use of communication strategies for patients with hearing loss.

There are a few links below, starting with a pre- training survey. Next is the link to the training presentation. The third link is for the post- training survey. Lastly, there is a handout on communication strategies discussed in the training.

**Pre-training Survey:** [https://uwsp.az1.qualtrics.com/jfe/form/SV\\_0HWR85UtCGN6dM2](https://uwsp.az1.qualtrics.com/jfe/form/SV_0HWR85UtCGN6dM2)

**Communication Strategies Recording:** [https://drive.google.com/file/d/1bCiWiXiHcAGhFVVLWLXm8\\_qdaYqGoBM/view?usp=sharing](https://drive.google.com/file/d/1bCiWiXiHcAGhFVVLWLXm8_qdaYqGoBM/view?usp=sharing)

**Post-training Survey:** [https://uwsp.az1.qualtrics.com/jfe/form/SV\\_e8WEHog3KdQRCN8](https://uwsp.az1.qualtrics.com/jfe/form/SV_e8WEHog3KdQRCN8)

**Communication Strategies Handout:** [https://drive.google.com/file/d/1AXlivZ\\_EGnpfqmu\\_TJcGdtpHnJw8O9Tu/view?usp=sharing](https://drive.google.com/file/d/1AXlivZ_EGnpfqmu_TJcGdtpHnJw8O9Tu/view?usp=sharing)

If you have any questions, reach out to Aubrey at [aamb1617@uwsp.edu](mailto:aamb1617@uwsp.edu)

**FREE ZOOM TRAINING!**

## **ADVANCING NEUROPSYCHIATRIC CARE: CONNECTING BRAIN INJURY TREATMENT TO BETTER OUTCOMES**

Brain injuries are a significant yet often overlooked contributor to neuropsychiatric symptoms (NPS), such as depression, anxiety, cognitive decline, and agitation. These symptoms can develop regardless of the injury's severity and frequently persist over time. This seminar series will focus on the following topics: recognizing behavioral, emotional, and cognitive symptoms in patients with brain injury; prescribing medications for brain injury-related symptoms; providing supportive psychotherapy and cognitive-behavioral therapy; educating and supporting families of patients with brain injury.

**REGISTER AT**  
**[GO.UNL.EDU/REG\\_TBIPART1](https://go.unl.edu/reg_tbipart1)**

**THURSDAY, OCT. 9TH**  
**11AM-1PM CENTRAL**  
**VIA ZOOM**



## **BEST PRACTICES IN SCREENING AND DIAGNOSIS OF ADHD IN ADULTS**

**FREE ZOOM TRAINING**

This presentation will review empirically supported best practices for the screening and diagnosis of Attention Deficit Hyperactivity Disorder (ADHD) in adults. The content will cover who to screen and how to screen, an overview of the diagnostic process, and specific tools and recommendations related to accurately measuring current symptoms, assessing and making judgments about clinically significant functional impairments. In addition, how to establish childhood history in adults, careful differential diagnosis of ADHD versus mimicking conditions, and how to navigate challenging diagnostic scenarios in an era of self-diagnosis will also be covered.

**OCTOBER 16 | 9AM-12PM | VIA ZOOM**

### **Objectives:**

- 1. Identify the core components of evidence based assessment of ADHD in adults.**
- 2. Explain best practices in accurate measurement of ADHD symptoms.**
- 3. Describe low value practices that may lead to misdiagnosis (over or under diagnosis) of adult ADHD.**

**[CLICK HERE TO REGISTER](#)**







# Upcoming Office Hours

Sept. 25–Oct. 1, 2025

Thurs. Sept. 25: 2–3pm

Fri. Sept. 26: 2–3pm

Monday, Sept. 29–Wed. Oct. 1

Please email Sue to set up an appointment.

Susan Swearer, Ph.D., LP  
Chairperson  
Department of Educational Psychology  
University of Nebraska–Lincoln

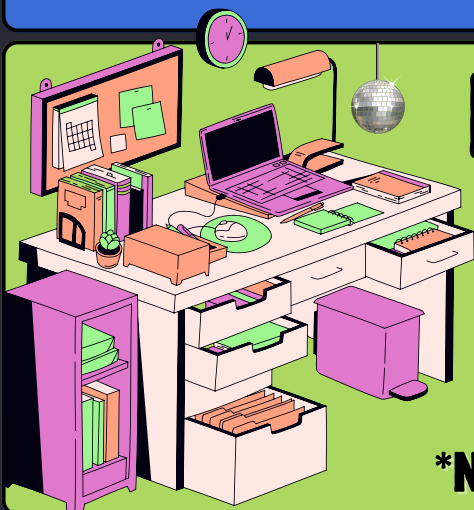


## Need to reserve a room?

<https://tinyurl.com/TEACRoomRes>

\*Note: please submit your request no later than 48hrs before your reservation!

Questions? Ask Zee!

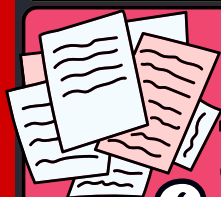


## Need to meet w/ Jules?

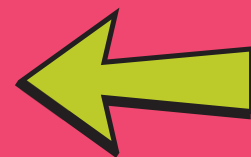
If you would like to meet with Jules, you must send them an email to set up an appointment.

Appointments available in-person and via Zoom

\*Note: Jules is unable to meet on Wednesdays



need to request materials from CSPC?



Microsoft Form Link: <https://go.unl.edu/cspcmaterials>