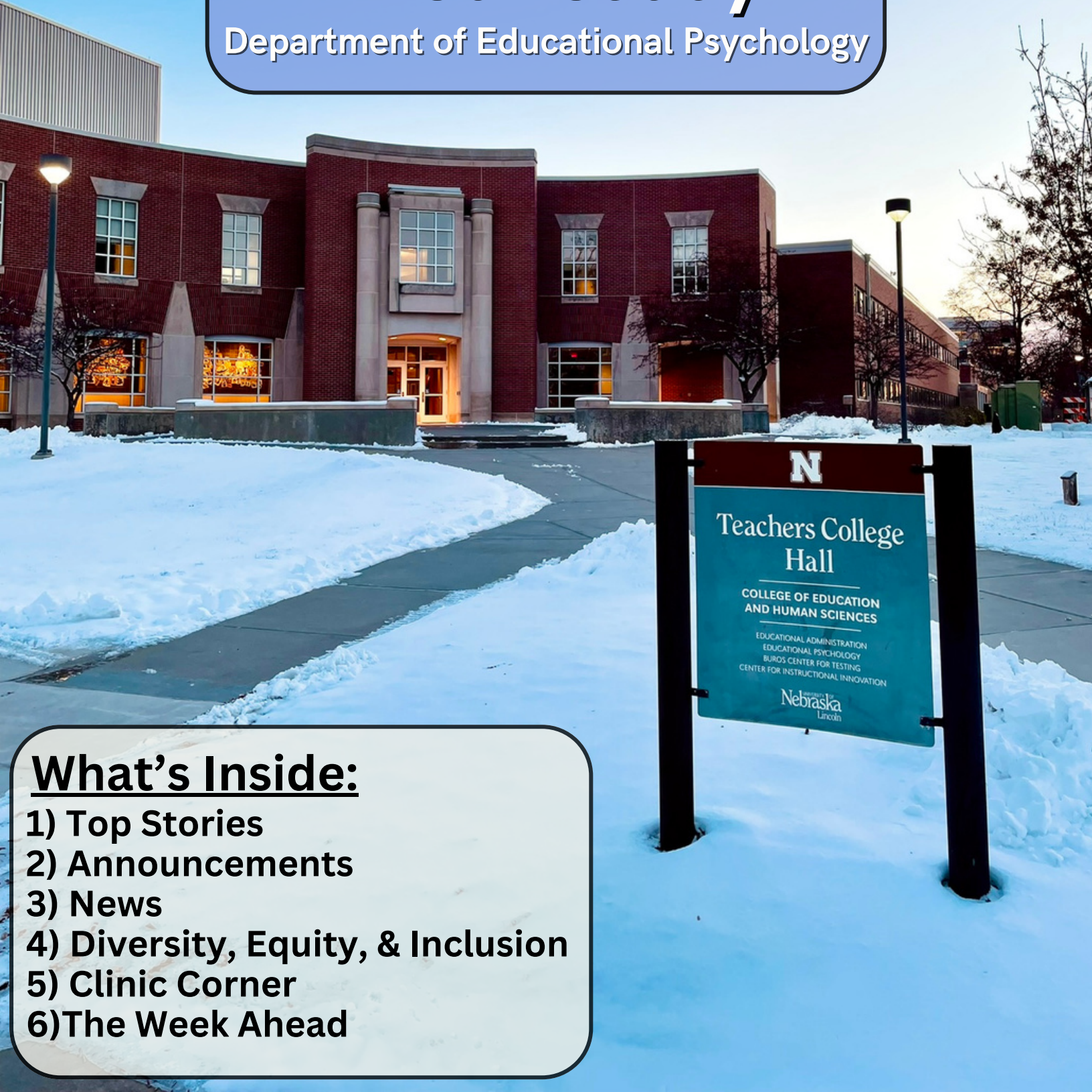


February 7, 2024

Volume 108

Weekly Wednesday

Department of Educational Psychology



What's Inside:

- 1) Top Stories
- 2) Announcements
- 3) News
- 4) Diversity, Equity, & Inclusion
- 5) Clinic Corner
- 6) The Week Ahead

MASTERS COMPREHENSIVE EXAM

MASTERS COMPREHENSIVE EXAMS ARE OFFERED ON THE FIRST FRIDAY OF MARCH, JUNE, AND OCTOBER.

THE NEXT MASTERS COMPREHENSIVE EXAM WILL TAKE PLACE ON **FRIDAY, MARCH 1ST**

REGISTRATION FORMS ARE DUE NO LATER THAN **FRIDAY, MARCH 23RD**

TO REGISTER, PLEASE FILL OUT THE FORM ON THE EDPS WEBSITE AND EMAIL YOUR FORM TO JULES BEFORE MARCH 23RD

CLICK THE LINK BELOW TO FIND THE REGISTRATION FORM
[HTTPS://GO.UNL.EDU/EDPSCOMPS](https://go.unl.edu/edpscomps)

YOU'RE GONNA DO GREAT!

PLEASE TALK TO YOUR ADVISOR IF YOU ARE UNSURE ABOUT WHETHER YOU MUST TAKE THE COMPREHENSIVE EXAM. THEY WILL ALSO BE ABLE TO TELL YOU WHICH EXAMS YOU MUST SELECT.



Hey there!

We've noticed that people have been leaving lights on in the office when they come in after-hours.

If you use the EDPS office after hours for any reason, please make sure you turn off the lights when you're done!
Thank you!

Have something you'd like posted in Weekly Wednesday?

Send Jules your information & a short "blurb" by 12pm the Tuesday prior.

A note from Jules:

Please refrain from sending information or documents containing:

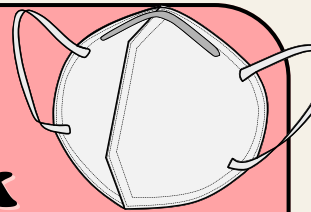
- Personal information, such as phone numbers or addresses
- Standalone QR Codes (cannot be shared digitally)
- Images with weblinks printed within the photo
- PDFs (please send JPEG/PNG when possible)

Questions? Ask Jules!





Want to start wearing a mask again but don't know where to find one? Stop by TEAC 114 and talk to Zee or Jules!



We have individually wrapped kn95 masks and surgical masks available for all to use. We are more than happy to share! Take care, and stay safe out there!

The DLS Student Committee encourages you to join their weekly writing sessions!

Everyone is welcome!!!

These writing sessions are for anyone working on their thesis, dissertation, or other writing projects. DLS hopes to provide a productive, consistent, and community workspace for students throughout the department.

Writing sessions will be held every Monday morning and will continue through April 29th

**MONDAY MORNINGS
9AM-12PM
TEAC 249**

Questions? Reach out to Catalina!

DLS invites you to our weekly

**WRITING
SESSIONS**

**EVERY MONDAY
9:00 - 12:00
TEAC 249**

Bring your assignments, dissertation, thesis, or any homework
Enjoy this workspace!



What is **wellbeing?**

Specifically...what does it mean to you as a college student?

Kelley Wick, a DLS student finishing their Doctoral degree, is conducting a mixed-methods study for her dissertation and is looking for student volunteers who would be interested in sharing their experiences and perspectives about mental health & wellbeing as a college student.

In order to participate, students must be between 17 and 28 years old, and currently enrolled at UNL as an undergraduate or graduate student.

Participation is completely online & includes a short survey, plus participating in an online focus group on Zoom, which should total no more than 90 minutes of your time.

**To sign up for the study, use this link:
<http://tinyurl.com/thewellbeingproject>**

Volunteers can earn either 4 EDPS research credits OR a \$60 Amazon gift card for participating in all parts of the study!



St. Monica's is hosting a hygiene drive!

The "Pack the Pod" hygiene drive is taking donations throughout the month of February

What they need:

- Shampoo & Conditioner
- Hairspray, gel, & hair products
- Toothpaste & Toothbrushes
- Tampons and sanitary napkins
- Textured Hair Products (wax, gels, etc.)

Visit St. Monica's website to learn more:
<https://www.stmonicas.com/>

Please bring donations to St. Monica's at
120 Wedgewood Drive



Please visit this link to view their Amazon wish list:
<https://go.unl.edu/packthepod>

LAVENDER GRADUATION

MAY 2, 2024

Celebrating the academic achievements of LGBTQA+ and allied students graduating in May 2024

Apply to be recognized by April 19th!

go.unl.edu/lavender



DON'T FORGET!

Starting April 1, 2024, Nebraska voters are required to present an accepted photo identification in order to vote.

For more information on voter ID in Nebraska, visit: bit.ly/NebID

The first statewide election under the new law will be **May 14, 2024**

When voting, you must present an ID that includes your photo and name. If your ID has expired, it is still acceptable for VOTING PURPOSES.

Unsure of your voter registration status?

Visit this link:

<https://go.unl.edu/register tovot>





DEMAC Cultural Potluck

Everyone is encouraged to bring a cultural/meaningful dish to share, but it is not required. There will also be take-out boxes available for those who are not eating at the event.

Additionally, everyone is welcome to wear their traditional/cultural clothing, bring games, and showcase their identity in any way they feel comfortable doing so.



THIS WEEKEND

The DEMAC Cultural Potluck is happening THIS WEEKEND!

**SATURDAY
FEBRUARY 10
STARTS @ 6PM**

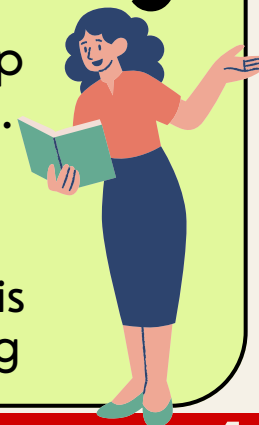
The event will be held at Wayne's home. Please see TEAMS for his address.

If you have any questions, please contact Rin at knguyen21@huskers.unl.edu

Struggling with lesson planning?

The Office of Graduate Studies will offer a workshop on Lesson Planning on **February 13 from 12-1 pm**. This workshop is an introduction to Lesson planning for TAs or those interested in teaching.

For more information, including how to register for this event, please visit: <https://go.unl.edu/lessonplanning>



Parenting in a Time of Insecurity

FREE Live Zoom Webinar

The health and well-being of families, classrooms, and communities today is increasingly affected by the insecurity, intolerance, and injustice we see in the world around us. Gene Beresin and Khadijah Booth Watkins from Mass General Hospital's Clay Center for Young Healthy Minds will help us understand the link between local and global events, social and cultural norms, and the confusion and uncertainty we and the children in our lives feel—and offer advice on how parents can care for themselves first, in order to successfully navigate the conversations that help children feel agency, safety, and security in uncertain times.

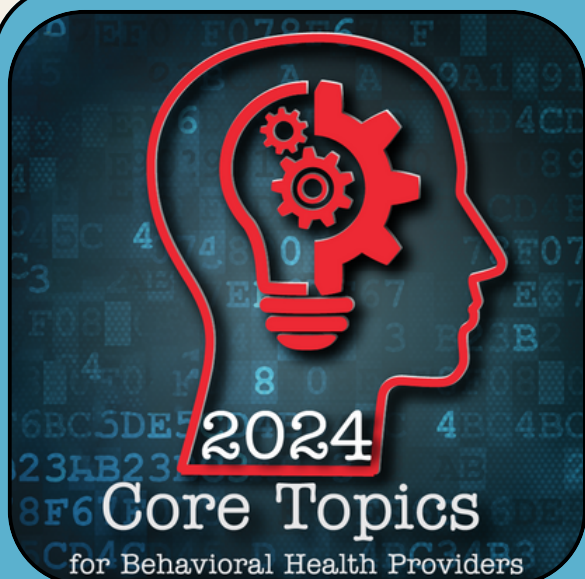
The event is free, but advanced registration is required.

Visit <http://bit.ly/DMSpeakerSeries> to register for the webinar

FREE



Clinic Corner



THIS YEAR'S THEME,
"THE BUSINESS SIDE OF BEHAVIORAL HEALTH,"
FOCUSSES ON PROVIDING ACTIONABLE
BUSINESS INSIGHTS TAILORED TO
MEET THE NEEDS OF THE
BEHAVIORAL HEALTH COMMUNITY.

Register for BHECN Core Topics series today!

REGISTRATION IS OPEN FOR 2024 CORE TOPICS WEBINAR SERIES. THE DATES OF THE CORE TOPICS WEBINARS ARE FEB. 5, 12, 19 AND 26 -- WHICH ARE ALL MONDAYS. THESE FREE WEBINARS WILL RUN FROM 12-1 P.M. CENTRAL TIME.

THE BHECN CORE TOPICS WEBINAR SERIES ENGAGES BEHAVIORAL HEALTH STAKEHOLDERS FROM ACROSS THE STATE TO PRESENT ON A VARIETY OF PRACTICAL BEHAVIORAL HEALTH TOPICS. TRAINEES AND PROVIDERS ATTEND THESE WEBINARS TO EXPAND THEIR KNOWLEDGE OF TOPICS THEY MAY ENCOUNTER AS PROFESSIONALS.

THE NEXT SEMINAR, "MARKETING YOUR SMALL BUSINESS/PRIVATE PRACTICE" WITH DALIA RUVALCABA, LIMHP, OF RADIANT COUNSELING WILL BE HELD ON
FEBRUARY 12TH
CLICK HERE TO REGISTER



Susan Swearer, Ph.D., LP
Chairperson
Department of Educational Psychology
University of Nebraska-Lincoln

Upcoming Office Hours

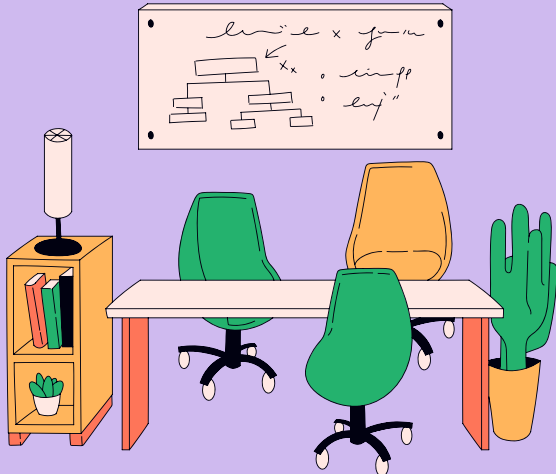
Thursday 2/8: 12-1pm

Friday 2/9: 12-1pm

Monday 2/12: 1-2pm

Tuesday 2/13: 2-3pm

Wednesday 2/14: 11am-12pm



Need to reserve a room?

<https://tinyurl.com/TEACRoomRes>

Jules' Office Hours & DEMAC Library Hours

Thursday 2/8: 2-3pm

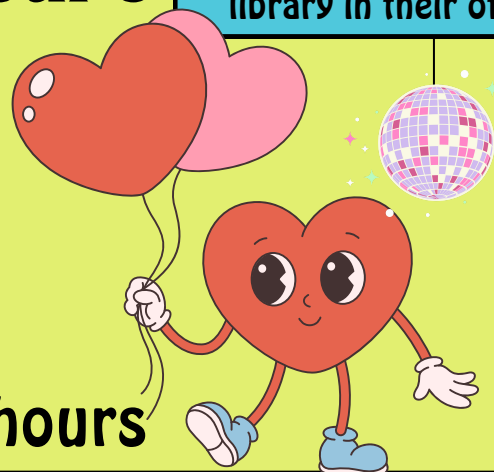
Friday 2/9: 2-3pm

Monday 2/12: 9-10am

Tuesday 2/13: 9-10am

Wednesday 2/14: no office hours

If these hours do not work for your schedule, please email Jules to set up a time to visit the library in their office!

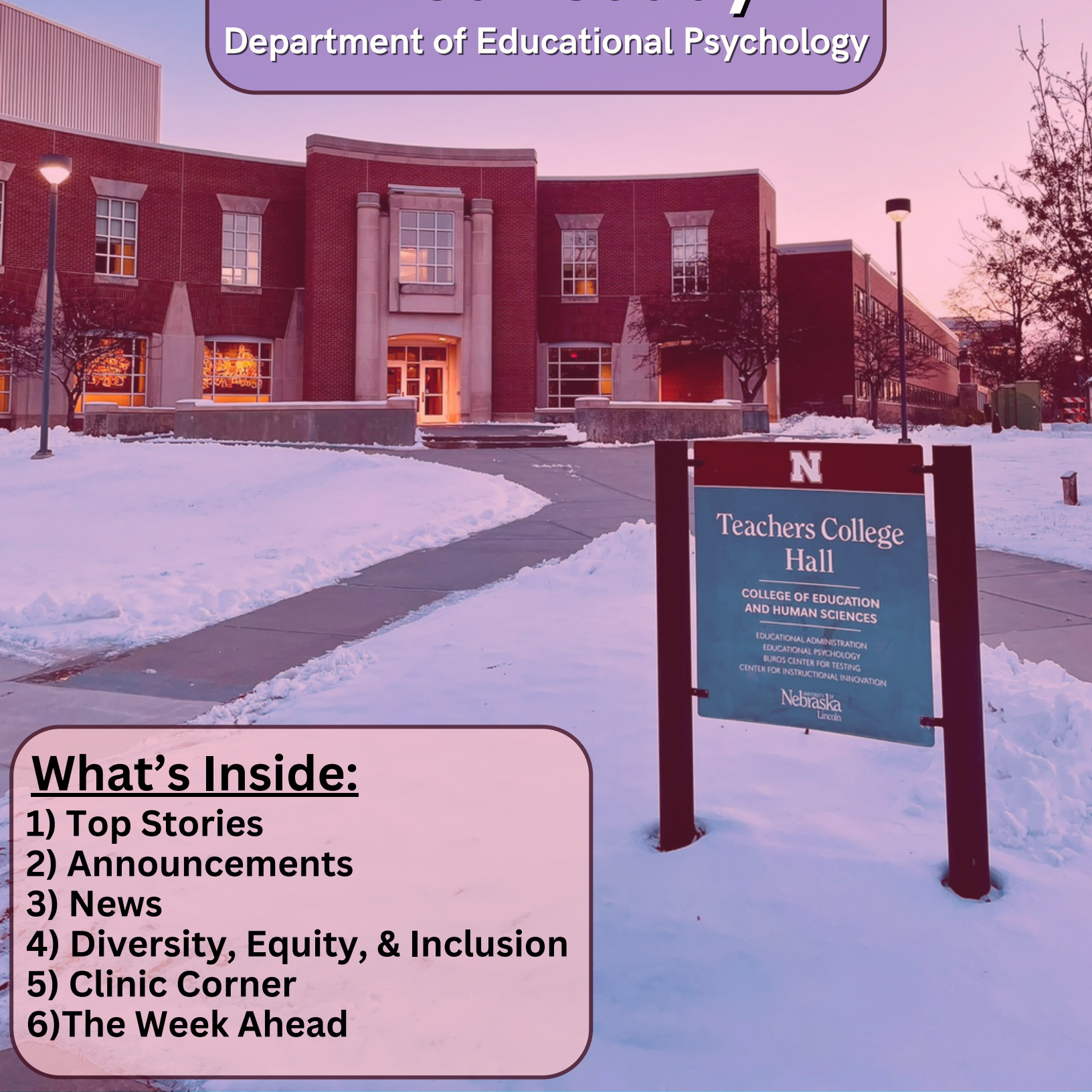


February 14, 2024

Volume 109

Weekly Wednesday

Department of Educational Psychology



What's Inside:

- 1) Top Stories
- 2) Announcements
- 3) News
- 4) Diversity, Equity, & Inclusion
- 5) Clinic Corner
- 6) The Week Ahead

24 Hours of Giving



A message from Sue Swearer:

Dear EDPS Faculty, Staff, Students, and Supporters: Happy Valentine's Day! Did you know that you and your family members can support the Department of Educational Psychology during the #GlowBigRed 24 hours of giving campaign? Every dollar matters in the #GlowBigRed campaign and you can make a donation that will directly go to the EDPS Foundation account to support student travel, fellowships, and professional development.

<https://glowbigred.unl.edu/campaigns/departement-of-educational-psychology>

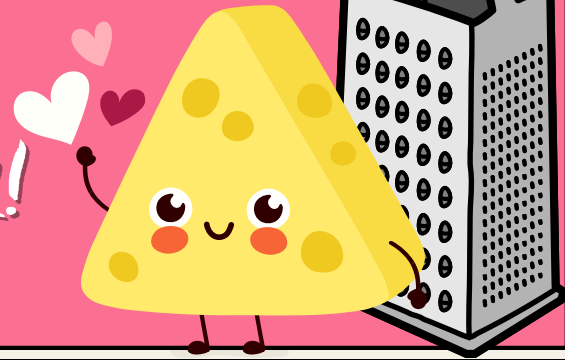
Consider joining Chairperson Dr. Susan Swearer in donating to EDPS.



this might sound cheesy, but i think you're grate!

Happy Valentine's Day!

to: you from: jules



Save THE Date

NEW STUDENT OPEN HOUSE

MARCH 4 ● 10am-2pm

Students, Staff, and Faculty, we need your help!

The Department of Educational Psychology is hosting an open house for newly admitted students on March 4th!

Schedule Of Events

10-11am: Meet & Greet w/ Students, Staff, & Faculty

11am-12pm: Campus Tour

12-1pm: Lunch

1-2pm: Social Hour

We would love to have people join us for the Meet & Greet, and we need a group of students who would be willing to do a short campus tour for some of our newly admitted students.

Want to get involved? Have questions? EMAIL JULES!

Student Spotlight

OM JOSHI

Everyone please join us in celebrating and congratulating Om, who was awarded the Judy Trumble Frederick International Experience Fellowship!

Om will be a guest speaker at Navrachna University as the workshop/training leader at the MS University of Baroda. He also presented his paper at the Indian Science Congress in January.

WAY TO GO, OM!
YOU ARE A SUPERSTAR!

LET'S CELEBRATE!

DLS invites you to our weekly

WRITING SESSIONS

EVERY MONDAY
9:00 - 12:00
TEAC 249

Bring your assignments, dissertation, thesis, or any homework
Enjoy this workspace!



Don't forget! DLS Writing sessions take place every Monday from 9am-12pm in TEAC 249!

ALL ARE WELCOME!



Group Facilitators Needed!

Chelsea Walker is looking for group facilitators for EDPS 320: Happiness and Well-being through Positive Psychology

Are you looking for an opportunity to make a meaningful impact?

Consider being a group facilitator this spring semester!

As a group facilitator, you'll lead small groups of undergraduate students in discussions on topics such as acts of kindness, self-compassion, and mindfulness. With sessions starting on March 22nd, you'll have the chance to guide students on their journey to happiness and well-being. You can choose to facilitate one or both sessions (10:30 am - 11:20 am or 12:30 pm - 1:20 pm) every Friday until May 10th. Plus, you'll receive a manual for facilitating the groups and have the chance to meet with the instructor beforehand to discuss positive psychology concepts and get an overview of the manual.

Reach out to Chelsea Walker (cwalker36@unl.edu) if you are interested!

MASTERS COMPREHENSIVE EXAM

MASTERS COMPREHENSIVE EXAMS ARE OFFERED ON THE FIRST FRIDAY OF MARCH, JUNE, AND OCTOBER.

THE NEXT MASTERS COMPREHENSIVE EXAM WILL TAKE PLACE ON **FRIDAY, MARCH 1ST**

REGISTRATION FORMS ARE DUE NO LATER THAN FRIDAY, MARCH 23RD

PLEASE TALK TO YOUR ADVISOR IF YOU ARE UNSURE ABOUT WHETHER YOU MUST TAKE THE COMPREHENSIVE EXAM. THEY WILL ALSO BE ABLE TO TELL YOU WHICH EXAMS YOU MUST SELECT.

TO REGISTER, PLEASE FILL OUT THE FORM ON THE EDPS WEBSITE AND EMAIL YOUR FORM TO JULES BEFORE MARCH 23RD

CLICK THE LINK BELOW TO FIND THE REGISTRATION FORM
[HTTPS://GO.UNL.EDU/EDPSCOMPS](https://go.unl.edu/edpscomps)

NEAR Center News

The NEAR center welcomes you to join us at QQPM's Lunch Workshop Series!

Dr. Bovaird and Jack Riley will lead a discussion on the foundational phases of the research process.

This session is designed to delve into the initial steps of one's research, covering topics such as:

- o Forming research questions
- o Aligning your questions with appropriate methodologies
- o Making informed analytical choices

Whether you're launching your own research or seeking to refine existing skills, this talk promises to equip you with insights and strategies to navigate the complex terrain of academic research.

Bring your lunch and check it out! If you have any questions, please reach out to Jack, Jay, or Jim.



Spring 2024



Data Byte

LUNCH WORKSHOP SERIES PRESENTS:

PLANNING A RESEARCH STUDY

Featuring Dr. James Bovaird & Jack Riley

[www.https://cehs.unl.edu/near](https://cehs.unl.edu/near)

PS: have you checked out the new NEAR center website yet?

Reviewers Needed!

The UNL Office of Undergraduate Research and Fellowships is seeking faculty, postdocs, and advanced graduate students from any discipline to volunteer as application reviewers for the 2024-2025 Undergraduate Creative Activities and Research Experience (UCARE) program cycle.

Application reviewers support undergraduate research at UNL while adding this enriching professional development experience to the university service section of their curriculum vitae. Reviewers evaluate UCARE project proposals from undergraduate students in all disciplines, to broadly include:

- Arts & Humanities
- Business
- Education
- Engineering
- Journalism
- Life Sciences
- Physical Sciences
- Social Sciences

Reviewers will be assigned no more than 15 applications in their field of expertise (or a closely related field) and will be provided with review training materials.

Beginning in early March, reviewers will use UNL's NuRamp proposal system to read and evaluate proposals at the times most convenient for them. The majority of reviewers average about five or fewer hours to complete the total evaluation process. The deadline for reviewers to submit their evaluations in NuRamp will be March 31, 2024.

Click [HERE](#) to apply to be an Application Reviewer Volunteer

Questions? Email Kali Patterson at ucare@unl.edu

VIRTUAL WORKSHOP

With Dr. Norissa Williams



Navigating Difficult DEI-Related Discussions in Class

In this interactive virtual discussion, Dr. Norissa Williams will lead participants in a meaningful exploration of how we discuss race in our classrooms. Using a social justice lens and a relational approach, we consider how the classroom can be a site of templating new social realities.



Use this link to register:

<https://cehs.unl.edu/navigating-difficult-dei-related-discussions-class-workshop/>

Tuesday, February 27th -- 11am-12:30pm

SECURE THE BAG:

Salary Negotiation Workshop

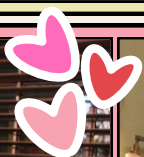
February 15, 2024 | 12 - 1 p.m.
Nebraska Union, Platte River Room South

All UNL women graduate students are invited.
Free to attend. Light refreshments served.



N Sponsored by Gender and Sexuality Center and Graduate Student Assembly

The Gender & Sexuality Center Invites you to join their Salary Negotiation Workshop on Thursday, February 15th. This event will provide a space for women graduate students to learn, connect, and discuss how to enter the workforce authentically while securing their salary goal. Please come prepared with a resume, cover letter, and a job description for their activity. This event is aimed towards women graduate students, but is open to all.



Thank you to all who attended the DEMAC Potluck!

We hope you had a great time!

Register for BHECN Core Topics series today!

REGISTRATION IS OPEN FOR 2024 CORE TOPICS WEBINAR SERIES. THE DATES OF THE CORE TOPICS WEBINARS ARE FEB. 5, 12, 19 AND 26 -- WHICH ARE ALL MONDAYS. THESE FREE WEBINARS WILL RUN FROM 12-1 P.M. CENTRAL TIME.

THE NEXT SEMINAR, "KEEPING PACE WITH TECHNOLOGY AS A CLINICIAN" WILL BE ON FEBRUARY 19TH

TO LEARN MORE AND REGISTER FOR THE EVENT, PLEASE VISIT: [HTTPS://GO.UNL.EDU/BHECNFEB19](https://go.unl.edu/BHECNFEB19)

Consider watching Agenia DeLouche, PhD, discussing Cultural Humility in working with Haitian Youth. A FREE seminar series that was supported by a SCCAP Child Mental Health in Action Grant to Florida International University. The grant has allowed us to provide a stipend to our speakers and post these videos free of charge to SCCAP members and the public.

Click this box to watch the seminar or visit:
https://go.unl.edu/agenia_delouche

Doctoral Students!

The Buffett Early Childhood Institute at the University of Nebraska is currently accepting applications from advanced doctoral students within the university system for one-year fellowships worth up to \$25,000.

The Buffett Early Childhood Institute Graduate Scholars program will award up to three fellowships to Ph.D. students. Their goal is to support high-quality research that impacts the early years of life, drawn from diverse fields including health, education, social work, art, psychology, the neurosciences, and more. Multidisciplinary research and new methodologies are welcomed.

For more information, visit:

<https://buffettinstitute.nebraska.edu/our-people/graduate-scholars>

**Completed applications are due by Sunday, March 31.
Applicants will be notified by the end of June.**





Susan Swearer, Ph.D., LP
Chairperson
Department of Educational Psychology
University of Nebraska-Lincoln

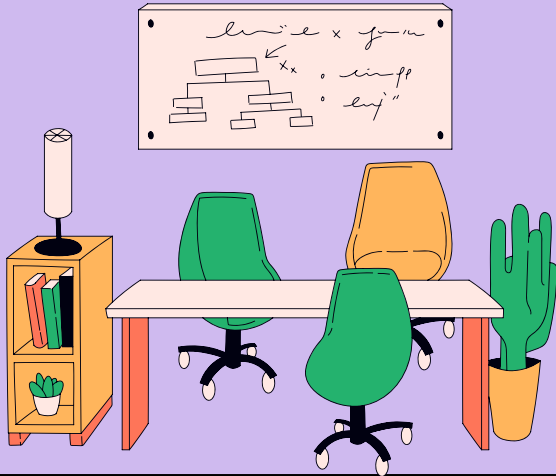
Upcoming Office Hours

Thursday 2/15: 2-3pm

Friday 2/16: 2-3pm

Next Week:

*Sue will be out of office
from February 19-23*



Need to reserve a room?

[https://tinyurl.com/
TEACRoomRes](https://tinyurl.com/TEACRoomRes)

Jules' Office Hours & DEMAC Library Hours

Thursday 2/15: 11am-12pm

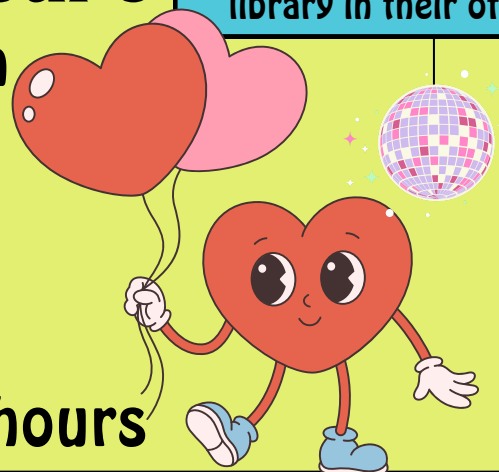
Friday 2/16: 2-3pm

Monday 2/19: 1-2pm

Tuesday 2/20: 2-3pm

Wednesday 2/21: no office hours

If these hours do not
work for your schedule,
please email Jules to
set up a time to visit the
library in their office!

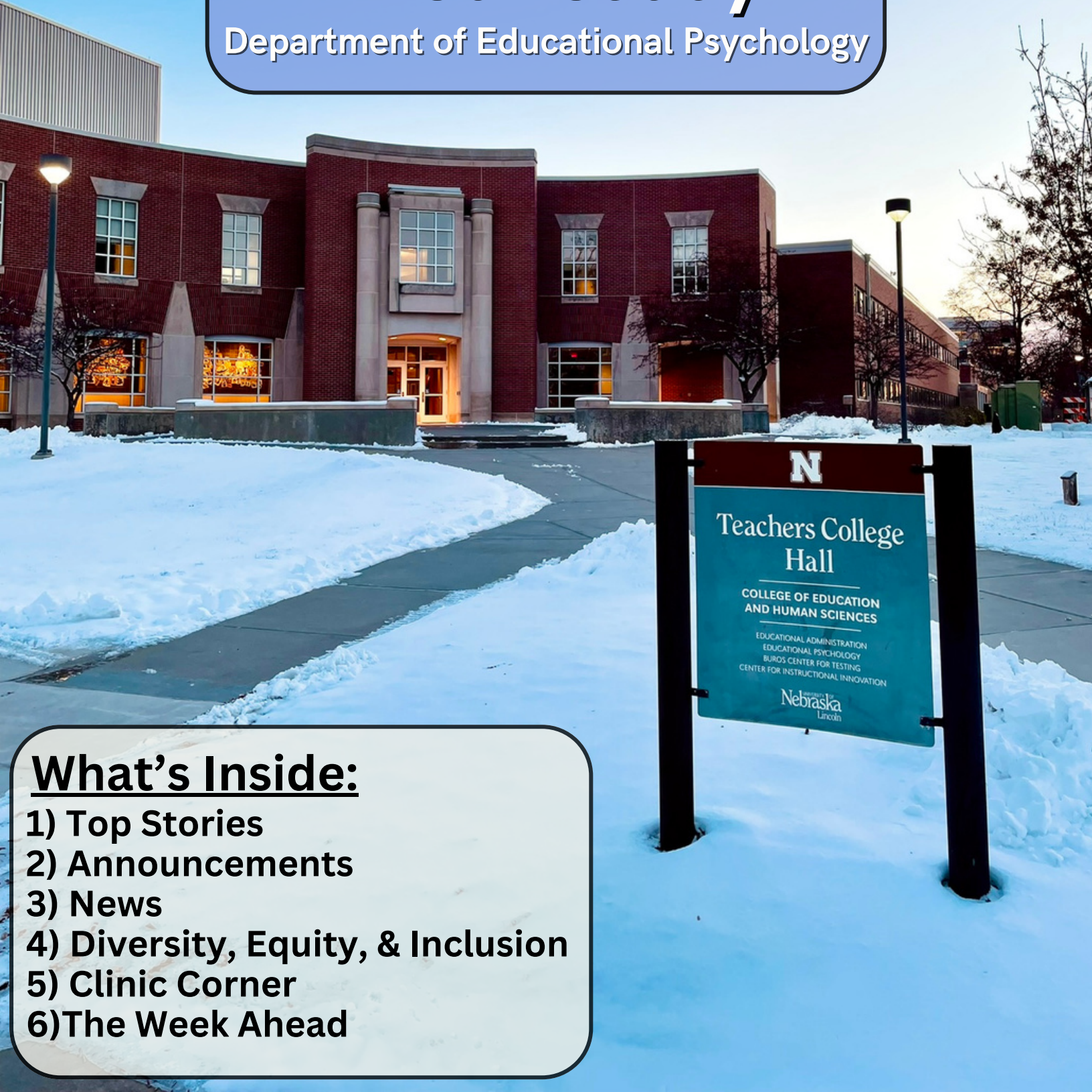


February 21, 2024

Volume 110

Weekly Wednesday

Department of Educational Psychology



What's Inside:

- 1) Top Stories
- 2) Announcements
- 3) News
- 4) Diversity, Equity, & Inclusion
- 5) Clinic Corner
- 6) The Week Ahead

Don't Forget!

The next Master's Comprehensive Exam is on
.....> **MARCH 1st**

The deadline to register is **THIS FRIDAY, February 23rd**. Please submit your registration form to Jules by 5pm on Friday.

You can find the form to register by visiting this website:
<https://cehs.unl.edu/edpsych/masters-comprehensive-exam/>

New Admit Open House

Monday, March 4th - 10am-2pm
Students, Staff, and Faculty,
we need your help!

The Department of Educational Psychology is hosting an open house for newly admitted students on March 4th.

We would love to have people join us for the Meet & Greet, and we need a group of students who would be willing to do a short campus tour for some of our newly admitted students.

**10-11am: Meet & Greet w/
Students, Staff, & Faculty**

11am-12pm: Campus Tour

12-1pm: Lunch

1-2pm: Social Hour

**Want to get involved? Have questions?
EMAIL JULES!**



Group Facilitators Needed!

Chelsea Walker is looking for group facilitators for EDPS 320: Happiness and Well-being through Positive Psychology

Are you looking for an opportunity to make a meaningful impact? Consider being a group facilitator this spring semester!



As a group facilitator, you'll lead small groups of undergraduate students in discussions on topics such as acts of kindness, self-compassion, and mindfulness. With sessions starting on March 22nd, you'll have the chance to guide students on their journey to happiness and well-being. You can choose to facilitate one or both sessions (10:30 am - 11:20 am or 12:30 pm - 1:20 pm) every Friday until May 10th. Plus, you'll receive a manual for facilitating the groups and have the chance to meet with the instructor beforehand to discuss positive psychology concepts and get an overview of the manual.

Reach out to Chelsea Walker (cwalker36@huskers.unl.edu) if you are interested!



Buffett Early Childhood Institute
at the University of Nebraska

FUNDING OPPORTUNITY!

The Buffett Early Childhood Institute at the University of Nebraska is currently accepting applications from advanced doctoral students within the university system for one-year fellowships worth up to \$25,000. The Buffett Early Childhood Institute Graduate Scholars program will award up to three fellowships to Ph.D. students. Their goal is to support high-quality research that impacts the early years of life, drawn from diverse fields including health, education, social work, art, psychology, the neurosciences, and more. Multidisciplinary research and new methodologies are welcomed.

Applications are now being accepted for 2024-25 Buffett Institute Graduate Scholars fellowships. The deadline for applications is Sunday, March 31, 2024. Award recipients will be notified by the end of June.

To learn more, visit: <https://go.unl.edu/buffettgraduatescholars>

Student Spotlight

The Counseling and School Psychology programs in EDPS continue their 100% Match rate for predoctoral and specialist internships!

CONGRATULATIONS to all our 2024 interns!

Hannah Ahmad Ridzuan

Emma Gustafson

Carrie Bohmer

Hannah Schulhof

Catie Carney

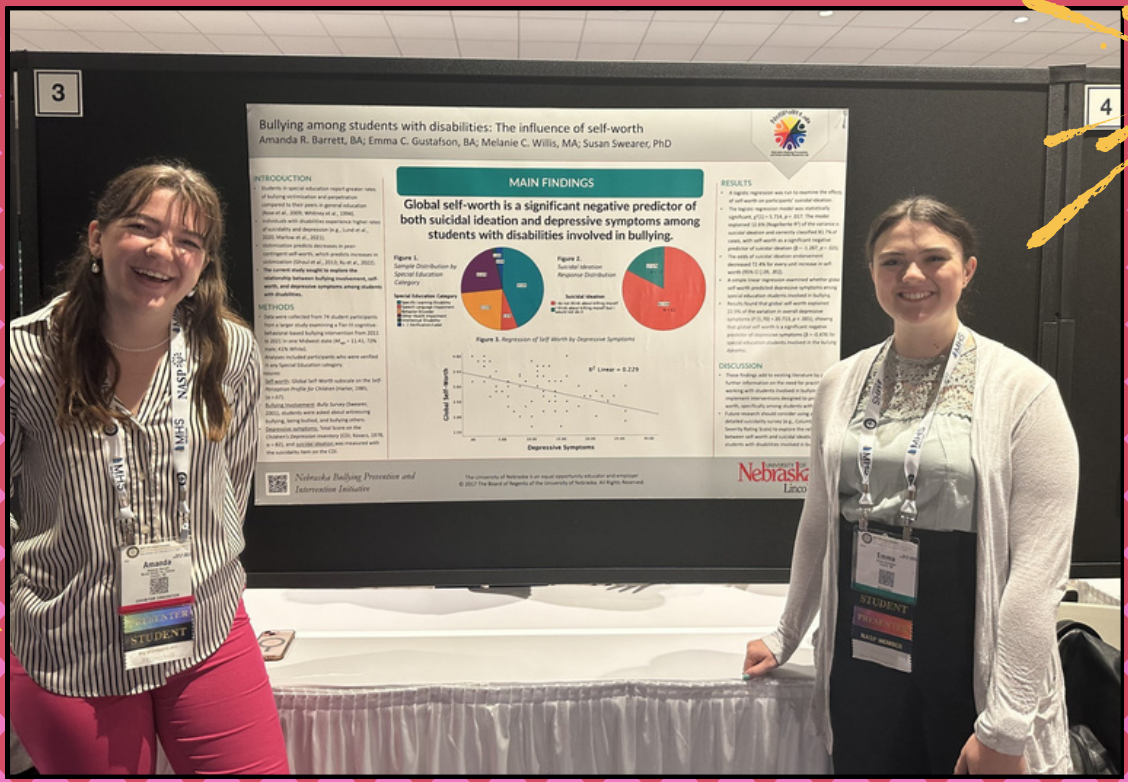
Jake Vargas

Camryn Steckelberg

Stephanie Lim

Abril Rangel-Pacheco

Merle Huff



Amanda Barrett (SchPsych) and Emma Gustafson (SchPsych) presenting their research at the National Association of School Psychologists' conference in New Orleans, LA last week.

CEHS AFIRE Presents
Journey of Healing and Hope

Friday March 1st



Cheri Stollar is a Native woman and mental health therapist. She will discuss how she helps youth and families use the energy within themselves to influence their everyday experiences in powerful ways. She will share how individuals working with students and families can connect with those experiencing trauma to support them through the process. Cheri uses personal and cultural experiences combined with her training as a mental health therapist.

To register, visit go.unl.edu/cheristollar

In-person RSVPs are first come first served. A Zoom link is also available.

News

DEMAC NOMINATIONS FOR THE 2024-2025 ACADEMIC YEAR ARE NOW OPEN!

Any EDPS member can nominate an EDPS graduate student to run for 2024-2025 DEMAC student executive board member positions. Students may also nominate themselves. The last day to nominate will be Friday, March 1st at 5pm.



Please use this link to fill out your DEMAC nomination form:

<https://go.unl.edu/demacnominations>

VIRTUAL WORKSHOP

With Dr. Norissa Williams

Tuesday, February 27th

11am-12:30pm



Navigating Difficult DEI-Related Discussions in Class



In this interactive virtual discussion, Dr. Norissa Williams will lead participants in a meaningful exploration of how we discuss race in our classrooms. Using a social justice lens and a relational approach, we consider how the classroom can be a site of templating new social realities.

Use this link to register: <https://cehs.unl.edu/navigating-difficult-dei-related-discussions-class-workshop/>

Crafts & Community

March 1st -- 6:30pm -- Nebraska Union 340



A fun and artsy evening activity for UNL student parents and their kids and dependents ages 5 to 12 years old. Create a personal hand-painted piece of art with child(ren). Canvases, paints, brushes, and decorating supplies are provided. Snacks, drinks, and swag, too. Free to UNL students.

REGISTER HERE:
go.unl.edu/crafts



When the Apple Doesn't Fall Far From the Tree: Treating Children with ADHD When the Parent Has ADHD Too

Learning Objectives: **Analyze** the research on how parent ADHD impacts parenting and child outcomes. **Apply** the knowledge of research on how parent ADHD can impact delivery of child treatment. **Explain** evidence-based strategies for addressing parent ADHD and co-occurring symptoms. **Utilize** a cultural lens to evaluate the research and create an informed treatment plan
Appropriate for Pre-doctoral and post-doctoral participants

Visit this link to register:
<https://go.unl.edu/adhdwebinar>

February 29, 2024 -- 1pm EST



BHECN Core Topics Series

THE FINAL SESSION OF THE 2024 BHECN CORE TOPICS SERIES IS ON FEBRUARY 26TH!

The final seminar is titled: **“Social Entrepreneurship: Resources, Ethics, and Lessons Learned”** and will be hosted by **Rebecca Miller, CMF; Kiley Phelps, MPA; and Susan Reay, EdD, LICSW.**

To register for the event, please visit:
<https://go.unl.edu/bhecnfeb26>

3rd Annual SUICIDE RESEARCH SYMPOSIUM

APRIL 17-19, 2024

Virtual

SUICIDERESARCHSYMPOSIUM.COM



American Foundation for Suicide Prevention

The 3rd Annual Suicide Research Symposium being held virtually April 17-19, 2024

Registration is now open! The Symposium will be free to attend. The Symposium is a place where you have the opportunity to: present recent research findings, stay informed on developments in suicide research, advance inclusive and equitable practices in suicide research and prevention, Network, connect, and build a diverse community with other suicide researchers across disciplines

To register, visit: <https://go.unl.edu/srsregistration>

Rutgers Graduate School of Applied and Professional Psychology invites all Division 53 members to attend their CE Zoom webinar:

Becoming an Empowering Ally at the Intersection of Menstrual Health and Mental Health

with Dr. Monique Gonzalez
Due to substantial stigma and historical lack of research at the intersection of mental health and menstrual health, there has been limited dialogue and significant misunderstanding of premenstrual disorders in the healthcare arena. Given the impact on daily functioning and heightened risk of suicide for those living with Premenstrual Dysphoric Disorder, it is imperative that clinicians are equipped with up-to-date knowledge to more effectively and compassionately respond to the needs of patients with a menstrual cycle.

This training provides an introduction to the landscape of premenstrual disorders with the aim of learning how to show up as a therapeutic ally to empower clients. Healthcare professionals will gain insight into the current research, assessment, and evidence based treatment options for premenstrual disorders. Clinical considerations that are specific to this population will be reviewed. Participants will also reflect on their role in collective care and advocacy efforts, creating systemic ripples of healing that benefit individuals managing mental health difficulties associated with their menstrual cycle.

March 8th
9-11am ET



CLICK THIS BOX TO LEARN MORE ABOUT THE EVENT AND REGISTER TO ATTEND



Susan Swearer, Ph.D., LP
Chairperson
Department of Educational Psychology
University of Nebraska-Lincoln

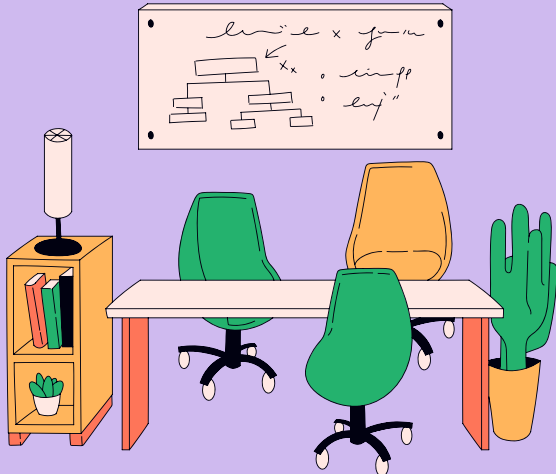
Upcoming Office Hours

This week:

Sue will be out of office from February 19-23

Next Week:

Monday 2/26: 1-2pm
Tuesday 2/27: 2-3pm
Wednesday 2/28: 2-3pm



Need to reserve a room?

<https://tinyurl.com/TEACRoomRes>

Jules' Office Hours & DEMAC Library Hours

Thursday 2/22: 12-1pm

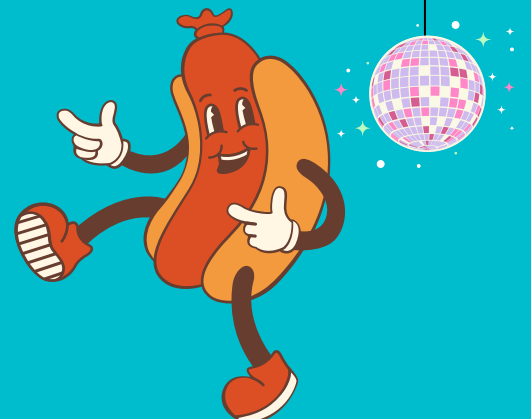
Friday 2/23: 1-2pm

Monday 2/26: 9-10am

Tuesday 2/27: 2-3pm

Wednesday 2/28: no office hours

If these hours do not work for your schedule, please email Jules to set up a time to visit the library in their office!

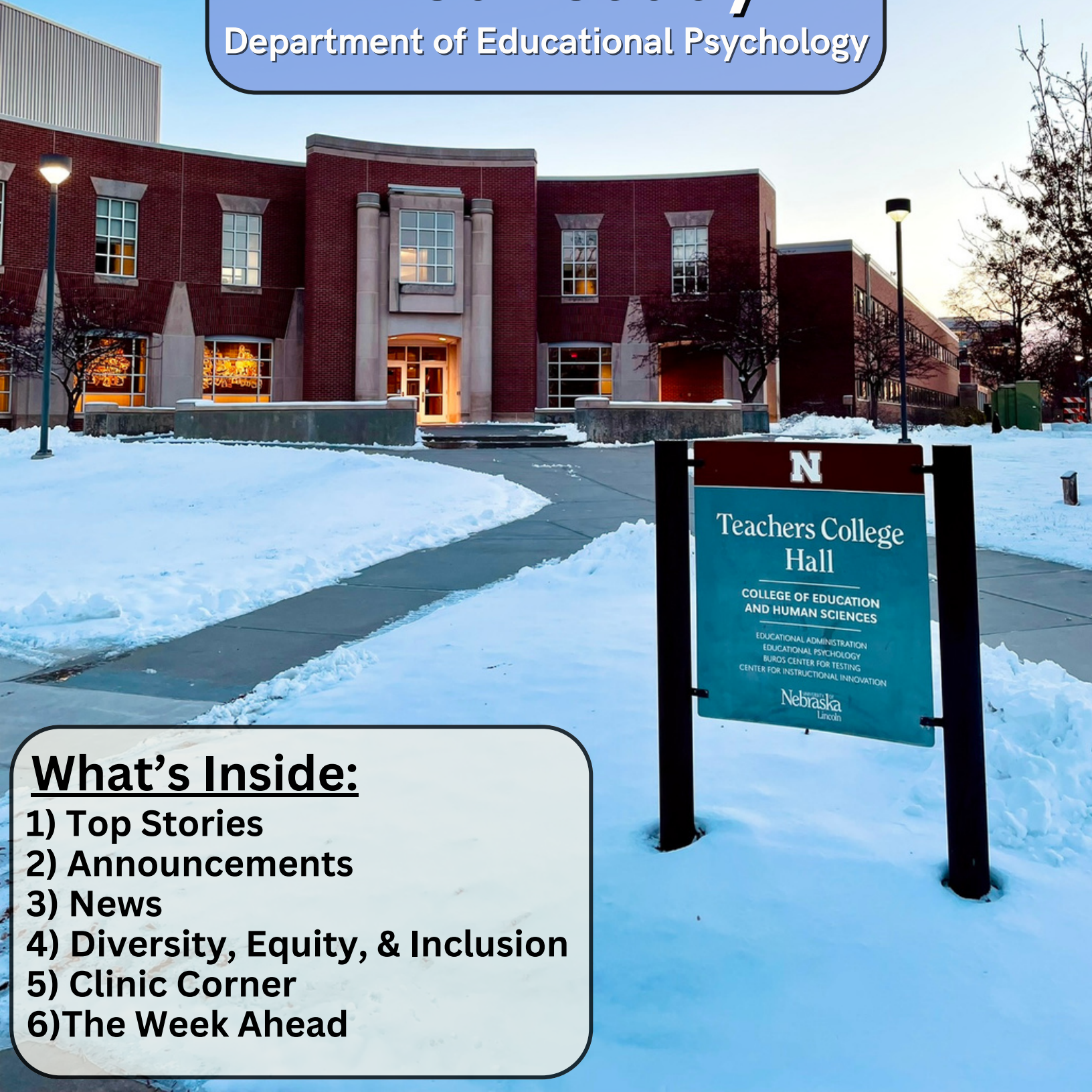


February 28, 2024

Volume 111

Weekly Wednesday

Department of Educational Psychology



What's Inside:

- 1) Top Stories
- 2) Announcements
- 3) News
- 4) Diversity, Equity, & Inclusion
- 5) Clinic Corner
- 6) The Week Ahead

New Admit Open House

Monday, March 4th - 10am-2pm

**Students, Staff, and Faculty,
we need your help!**

The Department of Educational Psychology is hosting an open house for newly admitted students on March 4th.

We would love to have people join us for the Meet & Greet, and we need a group of students who would be willing to do a short campus tour for some of our newly admitted students.

Here's where we need your help:

10-11am: Meet & Greet w/ Students, Staff, & Faculty (TEAC 202)

- Everyone is welcome! We'd love for our students to have a chance to meet you!

11am-12pm: Campus Tour

- We need 2-3 more students to help with the campus tours! Please let Jules know if you are able to lead a tour.

12-1pm: Lunch (CPEH 227)

- Lunch will be provided for our new admits. Feel free to bring your lunch and join us!

1-2pm: Social Hour (CPEH 227 & Beyond!)

- All are welcome! Chat with students, show them around to faculty offices, the hour is yours!

**Please email Jules (jmeyers19@unl.edu) if you are able to help!
We'd love to see you there!**



Master's COMPS

REMINDER! If you are registered for March's Comprehensive Exam, the date of the exam is this Friday, March 1st!

You should have received an email from Jules regarding the exam location and time. If you have not received this email, please reach out to Jules ASAP.

STUDENT SPOTLIGHT

**A huge congratulations to Carrie Bohmer, who was awarded a stipend for her project entitled “The Overturning of Roe v. Wade and People Capable of Pregnancy: An Interpretative Phenomenological Analysis.”
Way to go, Carrie! We are so proud of you!**

continuing our celebration...

**Dr. Dena Abbott was selected by the Chancellor’s Commission on the Status of Women as one of the 2024 recipients of the Chancellor’s Outstanding Contribution to Women Award!
CONGRATULATIONS, DENA!!!**

FUNDING OPPORTUNITY!

The Buffett Early Childhood Institute at the University of Nebraska is currently accepting applications from advanced doctoral students within the university system for one-year fellowships worth up to \$25,000.

The Buffett Early Childhood Institute Graduate Scholars program will award up to three fellowships to Ph.D. students. Their goal is to support high-quality research that impacts the early years of life, drawn from diverse fields including health, education, social work, art, psychology, the neurosciences, and more. Multidisciplinary research and new methodologies are welcomed.

Applications are now being accepted for 2024-25 Buffett Institute Graduate Scholars fellowships. The deadline for applications is **Sunday, March 31, 2024**. Award recipients will be notified by the end of June.

To learn more, visit: <https://go.unl.edu/buffettgraduatescholars>

As a reminder, all funding opportunities are posted to our website. We update this page as new information is sent to us, so this is the most up-to-date place to find information on assistantships available for the upcoming academic year. Please check our website for all available assistantships and fellowships. We will know more in the coming weeks regarding assistantships, so be sure to check back regularly!

Visit this website to find currently available funding opportunities:
<https://cehs.unl.edu/edpsych/graduate-assistantships/>





Chelsea Walker is looking for group facilitators for EDPS 320: Happiness and Well-being through Positive Psychology

As a group facilitator, you'll lead small groups of undergraduate students in discussions on topics such as acts of kindness, self-compassion, and mindfulness. With sessions starting on March 22nd, you'll have the chance to guide students on their journey to happiness and well-being. You can choose to facilitate one or both sessions (10:30 am - 11:20 am or 12:30 pm - 1:20 pm) every Friday until May 10th. Plus, you'll receive a manual for facilitating the groups and have the chance to meet with the instructor beforehand to discuss positive psychology concepts and get an overview of the manual.

Reach out to Chelsea Walker (cwalker36@huskers.unl.edu) if you are interested!

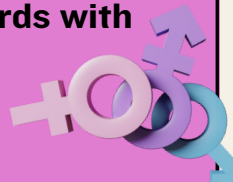


GTAs teaching undergraduate classes!

Please share the following information with your students:

Jacob Vargas, a doctoral candidate in our department, is seeking undergraduate participants for his study regarding gender attitudes.

- Participants will be entered to receive one of 3 \$50 Amazon gift cards with a one-in-one-hundred chance of winning
- Participant will take approximately 35 minutes
- There are minimal risks involved in this research



Please scan the QR code or use the following link to participate:
<https://go.unl.edu/genderopinions>



Questions about this study can be directed to:

Jacob Vargas (jvargas4@huskers.unl.edu) or Dena Abbott (dabbott5@unl.edu)

CEHS AFIRE PRESENTS JOURNEY OF HEALING AND HOPE

FRIDAY MARCH 1ST

11:30AM-1PM -- NEBRASKA UNION



Cheri Stollar is a Native woman and mental health therapist. She will discuss how she helps youth and families use the energy within themselves to influence their everyday experiences in powerful ways. She will share how individuals working with students and families can connect with those experiencing trauma to support them through the process. Cheri uses personal and cultural experiences combined with her training as a mental health therapist.

TO REGISTER, VISIT [GO.UNL.EDU/CHERISTOLLAR](https://go.unl.edu/cheristollar)

In-person RSVPs are first come first served. A Zoom link is also available.



Rutgers Graduate School of Applied and Professional Psychology invites all Division 53 members to attend their CE Zoom webinar:

Becoming an Empowering Ally at the Intersection of Menstrual Health and Mental Health

with Dr. Monique Gonzalez

**March 8th
9-11am ET**

Due to substantial stigma and historical lack of research at the intersection of mental health and menstrual health, there has been limited dialogue and significant misunderstanding of premenstrual disorders in the healthcare arena. Given the impact on daily functioning and heightened risk of suicide for those living with Premenstrual Dysphoric Disorder, it is imperative that clinicians are equipped with up-to-date knowledge to more effectively and compassionately respond to the needs of patients with a menstrual cycle.



This training provides an introduction to the landscape of premenstrual disorders with the aim of learning how to show up as a therapeutic ally to empower clients. Healthcare professionals will gain insight into the current research, assessment, and evidence based treatment options for premenstrual disorders. Clinical considerations that are specific to this population will be reviewed. Participants will also reflect on their role in collective care and advocacy efforts, creating systemic ripples of healing that benefit individuals managing mental health difficulties associated with their menstrual cycle.

**Visit this link to learn more and register for the event:
https://go.unl.edu/menstrual_and_mental_health**



DEMAC Nominations for the 2024-2025 Academic Year are now open!

Any EDPS member can nominate an EDPS graduate student to run for 2024-2025 DEMAC student executive board member positions. Students may also nominate themselves. The last day to nominate will be Friday, March 1st at 5pm.

**Please use this link to fill out your
DEMAC nomination form:**

<https://go.unl.edu/demacnominations>



Dish It Up: Women's History Month

Sponsored by UNL's Gender and Sexuality Center & OASIS

Dish It Up is an interactive conversation where individuals can share their personal views, learn from others and engage in civil discussions concerning current events, topics affecting students' lives, UNL, and national/international happenings. Dish It Up is a space that fosters inclusive shared learning of students, faculty, and staff where everyone can engage in dialogue, challenge their thinking, and build relationships. Dish It Up actively builds an inclusive environment for all University of Nebraska-Lincoln community members and recognizes the importance of collaboration.

Since 1995, presidents have issued a series of annual proclamations designating the month of March as "Women's History Month." These proclamations celebrate the contributions women have made to the United States and recognize the specific achievements and vital role that women have made over the course of American history in a variety of fields.

**March 5th - 12-1pm
Jackie Gaughan Multicultural Center (OASIS Lounge)**



3rd Annual
SUICIDE RESEARCH SYMPOSIUM

APRIL 17-19, 2024

Virtual



American
Foundation
for Suicide
Prevention

**The 3rd Annual Suicide Research Symposium
being held virtually April 17-19, 2024**

Registration is now open! The Symposium will be free to attend. The Symposium is a place where you have the opportunity to: present recent research findings, stay informed on developments in suicide research, advance inclusive and equitable practices in suicide research and prevention, Network, connect, and build a diverse community with other suicide researchers across disciplines



To register, visit this website:
<https://go.unl.edu/srsregistration>

The next Division 5 Topic Forum is hosted in collaboration with APA's Science Directorate to feature Dr. Joe Gone, along with other indigenous psychologists to discuss:

Indigenous Knowledges and Research Methodologies in Psychology

Presented in collaboration with APA Division 5 (Quantitative and Qualitative Methods) and The Society of Indian Psychologists.

The term "Indigenous psychology" refers to several related projects within disciplinary psychology, including the investigation of diverse psychologies expressed by Indigenous Peoples as well as consideration of the implications of Indigenous "ways of knowing" for knowledge production within the discipline. As Indigenous Peoples of the USA and Canada, Native Americans and First Nations People have survived centuries of colonial dispossession and disruption by European settlers and their descendants. This legacy of colonial subjugation has played out through harmful knowledge production about Indigenous Peoples, too often entailing histories of exploitative and damaging research by outsiders in tribal communities. Thus, ongoing anticolonial struggle by Indigenous People incorporates efforts to unseat hegemonic methodologies and approaches within academic disciplines, including psychology. Indeed, many Indigenous psychologists begin their resistance to stock disciplinary methodologies as early as in their graduate training.

In this virtual session on Indigenous knowledges and methodologies in psychology, four early-career Indigenous psychologists will share their experiences and expertise concerning the identification and application of Indigenous ways of knowing for research in psychology.

March 20th from 1-2:30pm ET

To learn more & to register, visit: <https://go.unl.edu/ikrmp>



Clinic Corner



Susan Swearer, Ph.D., LP
Chairperson
Department of Educational Psychology
University of Nebraska-Lincoln

Upcoming Office Hours

This week:

Thursday 2/29: 12-1pm

Friday 3/1: No Office Hours

Next Week:

Monday 3/4: 2-3pm

Tuesday 3/5: 10-11am

Wednesday 3/6: 11am-12pm



Need to reserve a room?

<https://tinyurl.com/TEACRoomRes>

Jules' Office Hours & DEMAC Library Hours

Thursday 2/29: 10-11am

Friday 3/1: No Office Hours

Monday 3/4: 1-2pm

Tuesday 3/5: 2-3pm

If these hours do not work for your schedule, please email Jules to set up a time to visit the library in their office!

