

WEDNESDAY, FEBRUARY 2, 2022

WEDNESDAY WEEKLY

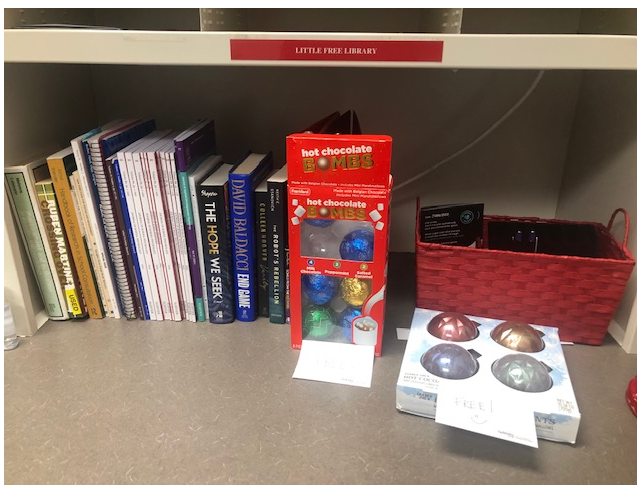
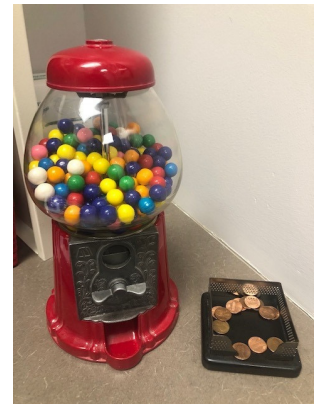
Department of Educational Psychology Newsletter

N
Teachers College Hall VOL. 22
COLLEGE OF EDUCATION
AND HUMAN SCIENCES
EDUCATIONAL ADMINISTRATION
EDUCATIONAL PSYCHOLOGY
BUROS CENTER FOR TESTING
CENTER FOR INSTRUCTIONAL INNOVATION
UNIVERSITY OF
Nebraska
Lincoln

In this newsletter, you will find announcements, news, and resources from the Educational Psychology Department to help keep you engaged and informed! Be sure to check follow us on Twitter @UNL_EDPS for additional updates. If you would like an announcement posted to the newsletter, please email your information to Edith at: erezamartinez2@unl.edu.

ANNOUNCEMENTS

- **Gumball Machine and Little Free Library:** We are excited to announce that the gum ball machine is up and running! Feel free to bring pennies or use the pennies provided to grab some gum. We also have a "Little Free Library" where you can pick up a new book or drop off any books you would like to donate to the department. This is a place where anyone can place items they would like to donate for anybody to grab.



- **EDPS Faculty, Staff, and Students:** Here's a useful link to help us recognize and report spam text messages:
<https://www.consumer.ftc.gov/articles/how-recognize-and-report-spam-text-messages>

HERE'S WHAT'S UP!

1 - ANNOUNCEMENTS

2 - NEWS

3 - DIVERSITY, EQUITY, AND INCLUSION

4 - CLINIC CORNER

NEWS

A special offer for UNL faculty, staff, and students from the Lied Center for Performing Arts:

- The Lied is offering \$10 tickets to all UNL faculty and staff using the code NOTES or by visiting tickets.liedcenter.org/2484?promo=NOTES
- Students can get FREE tickets through our Arts for All program by visiting go.unl.edu/artsforall
- In addition to being an award-winning actress, Anna Deavere Smith (The West Wing, Nurse Jackie, Black-ish) is a Pulitzer Prize nominated playwright. She's coming to the Lied Center on February 9, 2022 at 7:30pm to perform her latest work, Notes From the Field. Now more than ever, we need conversations around issues of social inequality. While developing this work, Smith conducted interviews with hundreds of people who are involved in the school-to-prison pipeline at all levels: students, teachers, parents, police, thought and policy leaders, psychologists, community activists, and many more. As she puts it, if we are to change the system, we must change the conversation. You can get more information on the show and watch a trailer here: <https://www.liedcenter.org/event/anna-deavere-smith-notes-field>. You can also watch a preview of the show, it is currently on demand with HBO Max.

DIVERSITY, EQUITY, AND INCLUSION

- **EDPS Faculty, Staff, and Graduate Students:** Consider signing up for NCFDD's FREE core curriculum webinar, "How to align your time with your priorities" on February 10th at 1pm Central!
 - Facilitated by Lisa Hanasono, Associate Professor, Bowling Green State University
 - Register [here](#)
- **EDPS Faculty, Staff, and Graduate Students:** Here's the [link](#) to SRCDD's research brief on the positive impact of gender-affirming policies for trans and gender diverse youth.

CLINIC CORNER

- **Counseling and School Psychology Clinic Student Clinicians and Supervising Faculty:** Consider signing up for [this FREE](#) webinar on "Understanding, evaluating, and treating disruptive mood dysregulation disorder" on Thursday, February 3rd at 1pm Central. Register [here](#).
- **Good news from APA:** In advance of this week's Senate HELP Committee hearing on mental health and substance use disorders, APA's Chief Science Officer, Dr. Mitch Prinstein, was featured in The Hill: <https://thehill.com/opinion/healthcare/591777-us-youth-are-in-a-mental-health-crisis-we-must-invest-in-their-care#bottom-story-socials>
 - The Counseling and School Psychology Clinic, the Nebraska Internship Consortium in Professional Psychology, and the Counseling and School Psychology training programs are helping to fill the gap in mental health treatment for children, youth, families, and adults in Nebraska and across the United States. The current mental health crisis in our schools and communities is dire and the programs in EDPS have evidence-based solutions to help.

CLINIC CORNER CONT...

- **The Happiness calendar** is a day-by-day guide to well-being. This month the hope is it helps you find your hope and courage.

February 2022 Happiness Calendar

This month, find hope and courage.

Keep up with the latest on the science of connection, compassion, and happiness by **subscribing to our newsletters**.

SUNDAY	MONDAY	TUESDAY	WEDNESDAY	THURSDAY	FRIDAY	SATURDAY
 Greater Good Science Center ggsc.berkeley.edu greatergood.berkeley.edu		1 Read books by Black authors for Black History Month.	2 Look for the humor in a challenging situation.	3 Find ways to interact more with your neighbors.	4 Let go of the expectation that you should feel happy all the time.	5 Be gentle with yourself when you feel afraid.
6 Call an old friend today.	7 Listen to soothing music.	8 Notice all the ways that you're being courageous just by quietly persevering .	9 Try our one-month Pathway to Happiness program.	10 When work is stressful, take a moment to practice gratitude .	11 Nourish yourself with the things that give you a sense of meaning.	12 Make a list of actions you could take to help alleviate your anxieties .
13 Practice loving-kindness to generate warm, compassionate feelings for others.	14 Reflect on what you want in your relationships and how you might achieve it.	15 Identify the goals that would help get you where you want to go .	16 Take four long, deep breaths (along with your kids) to help everyone calm down .	17 Find your tribe by seeking out cultural and community groups.	18 Offer everyone patience and kindness as you navigate pandemic-time school together.	19 Identify self-care practices that rejuvenate and restore your energy.
20 To get through hard times, acknowledge the difficulty rather than trying to fight it.	21 What do you think about Greater Good? Take our annual audience survey.	22 Have a heart-to-heart conversation with someone you disagree with.	23 Try to let go of unhelpful self-judgment and self-criticism.	24 Hold on to hope and courage in the face of climate change.	25 Forgive yourself to move on from a lingering regret.	26 Beware of the temptation to avoid other people's suffering and try to stay empathic .
27 Spend more time outdoors in nature this week.	28 Imagine what your best possible life would look like.					




SUSAN SWEARER, PH.D., LP
 CHAIR
 DEPARTMENT OF EDUCATIONAL PSYCHOLOGY
 UNIVERSITY OF NEBRASKA - LINCOLN

UPCOMING OFFICE HOURS (TEAC 114B OR ZOOM)

THURSDAY, FEBRUARY 3: 12:00PM - 1:00PM

FRIDAY, FEBRUARY 4: 11:00AM - 12:00PM

MONDAY, FEBRUARY 7: 1:00PM - 2:00PM

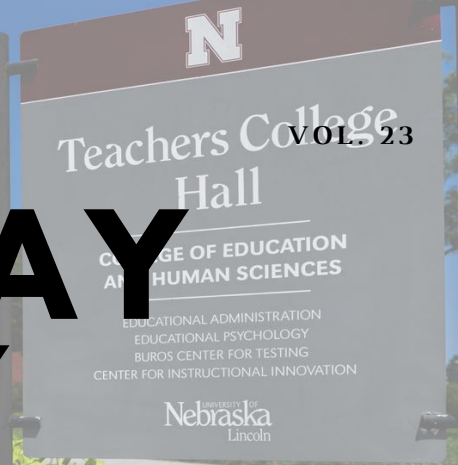
TUESDAY, FEBRUARY 8: 4:00PM - 5:00PM

WEDNESDAY, FEBRUARY 9: 11:00AM - 12:00PM

WEDNESDAY, FEBRUARY 9, 2022

WEDNESDAY WEEKLY

Department of Educational Psychology Newsletter



In this newsletter, you will find announcements, news, and resources from the Educational Psychology Department to help keep you engaged and informed! Be sure to check follow us on Twitter @UNL_EDPS for additional updates. If you would like an announcement posted to the newsletter, please email your information to Edith at: erezamartinez2@unl.edu.

IN MEMORIAM

- **Ian Newman**, January 12, 1941 - February 4, 2022: Ian taught and conducted research at the University of Nebraska for over 50 years where he called the Educational Psychology Department his home. His primary areas of focus included adolescent health, health education and public health. He was loved by his graduate students for his caring, mentoring, and interest in their backgrounds; many remain friends today. In 1997, Ian was named the Wesley C. Meierhenry Distinguished Professor by the University of Nebraska-Lincoln. In our Xerox room you will find pictures of China belonging to Ian. He served as the American deputy director of the American Exchange Center located in Xi'an Jiaotong University in Xi'an, China. Memorial service will take place Saturday, February 12, 2022 at First Plymouth Church, 2000 D Street. Livestream found at roperandsons.com/livestream. Memorials in lieu of flowers may be directed to the Lincoln Food Bank. Condolences online at roperandsons.com.



ANNOUNCEMENTS

- **EDPS Faculty:** SPAM alert! If you received an email from edpsych-fac-request@lists.unl.edu, it's SPAM! A UNL listserv address ends with "@listserv.unl.edu." If you receive this email you can select it and then click on the "Report Phish" icon in Outlook. This will notify the ITS Security Team.

HERE'S WHAT'S UP!

1 - ANNOUNCEMENTS

2 - NEWS

3 - DIVERSITY, EQUITY, AND INCLUSION

4 - CLINIC CORNER

ANNOUNCEMENTS CONT...

- **Thank you to our anonymous donor** We appreciate any donation to the coffee bar.



Upcoming birthdays

Kyle Burke- February 15

Please let Edith know if you would like your birthday listed in "Weekly Wednesday!"

Happy Birthday



NEWS

- **Graduate Students in Developmental & Learning Sciences:** The Attachment and Biobehavioral Catch-Up (ABC) Lab, supervised by Mary Dozier at the University of Delaware (UD), is looking to hire a postdoctoral fellow. The position involves working on one of two randomized clinical trials (RCT) that test the efficacy of an early home visiting intervention (ABC). In one of the RCTs, mothers using opioids and their infants are currently being enrolled. Autonomic nervous system regulation, brain activation (using event related potentials and MRI), cortisol regulation, DNA methylation, attachment, and behavioral regulation are among the variables assessed. The second study assesses adolescents who were first enrolled in an RCT in infancy. All adolescents are scanned at ages 13, 14, and 15, and additional behavioral constructs (inhibitory control, emotion regulation, attachment/affiliation) are assessed. The postdoctoral fellow will be responsible for overseeing research activities. Prior experience with MRI data collection and processing is preferred but not required. This is a full-time benefited position. Salary will follow the NIH postdoc salary scale. Ph.D. required by position start date, preferably in Clinical Psychology, Developmental Psychology, Behavioral Neuroscience, or related field. Strong organizational and interpersonal skills are essential. The position start date is flexible, with a preferred start date in the spring or early summer of 2022. Please send CV and letter of interest to Mary Dozier, mdozier@udel.edu.

DIVERSITY, EQUITY, AND INCLUSION

- **EDPS Faculty and Staff:** [Here](#)'s an article on avoiding bias in academic writing from the National Center for Faculty Development & Diversity. Be sure to sign up for the March 14-day writing challenge as well!
- **2022 Nebraska Conference on Health Equity:** The deadline to submit a poster for the 2022 Nebraska Conference on Health Equity has been extended to Monday, February 28, 2022. We invite submissions from scholars, community leaders, and researchers from all disciplines and organizations. Poster topics should relate to "addressing health disparities and health equity." The conference will be held April 26th and 27th, 2022, at the Nebraska Innovation Campus Conference Center in Lincoln, NE and live-streamed via Zoom. Learn more about the poster presentations and submission process by clicking on the button above.

CLINIC CORNER

- **Do you know how many RAKtivists we have in the Department of Educational Psychology?** Are you a RAKtivist? If not, you can join [now](#).
- **Mental Wellness includes eating healthy food.** Check out “Meal Kit Mondays” from UNL’s Wellness Kitchen: For more information or to register, visit wellness.unl.edu.
- **Counseling Psychology and School Psychology Students:** We are thrilled that our spring conference will be held both in Lincoln for a live audience and also zoomed out online throughout the state. This conference will focus on Diagnosis training as this is the new requirement for LIMHP’s. However, we are finding that a broad range of students, LMHPs, School Counselors, and LIMHPs are registering for the conference. We are still in need of some presentations for the conference so I encourage you to click on the link here to submit a conference proposals. A small honorarium of \$150 will be an expression of our gratefulness that you are sharing your knowledge and experiences with us.
 - Call for Programs: <https://forms.gle/rWx9GaFz4tmfEC6T9>
 - The Nebraska Counseling Association is wanting to strengthen our connection to the graduate students across the state. To help students become members, we are offering to each training program the opportunity to register students for a membership fee of \$10, regularly \$25. If the students are already members, then their membership will be continued by one year. No need for collecting funds, all that is needed is the students name and email address. You much have at least 10 students who want to take advantage of this offer. You can email the 10 names when you gather them and then email any additional names to necounseling@gmail.com. The offer expires on March 11th. Counselors in training must be student members in order to register for the student conference rate.
 - Conference Registration & NCA Website: <https://www.necounseling.org/>
 - We hope to see you either in person or online for our Spring Conference on April 22nd.
- **Webinar: "Best Practices for CBT with LGBTQA+ Adults"** with Dr. Debra Hope
 - Cost: \$25 for members / \$15 for student members / \$35 for non-members
 - When: Friday, February 18, 2022, 10:00 am – 11:30 am Central
 - For more information click [here](#).
 - Click [here](#) to register.



SUSAN SWEARER, PH.D., LP
CHAIR

DEPARTMENT OF EDUCATIONAL PSYCHOLOGY
UNIVERSITY OF NEBRASKA - LINCOLN



UPCOMING OFFICE HOURS (TEAC 114B OR ZOOM)

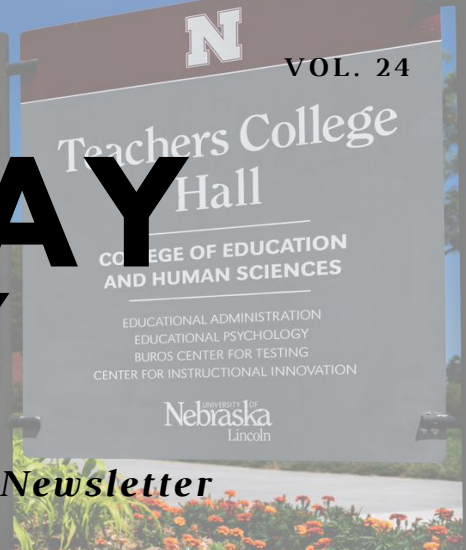
THURSDAY, FEBRUARY 10: 11:00AM-12:00PM

FRIDAY, FEBRUARY 11: 10:00AM-11:00AM

DR. SUSAN SWEARER WILL BE AT THE NASP
CONFERENCE IN BOSTON MONDAY, FEBRUARY 14,
2022 THROUGH FRIDAY, FEBRUARY 18, 2022

WEDNESDAY WEEKLY

Department of Educational Psychology Newsletter

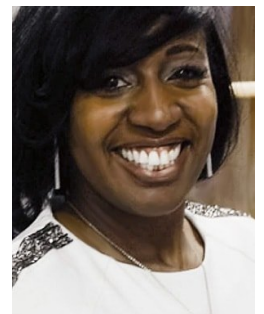


We acknowledge Arapaho, Tsististas & Suhtai (Cheyenne), and Kaw Peoples, as well as the relocated Ho-Chunk, Iowa, and Sac and Fox Peoples, upon whose homelands now reside the campuses and programs of the University of Nebraska, a land-grant institution. Let us recognize the legacies of violence, displacement, and survival that bring us here today.

In this newsletter, you will find announcements, news, and resources from the Educational Psychology Department to help keep you engaged and informed! Be sure to check follow us on Twitter @UNL_EDPS for additional updates. If you would like an announcement posted to the newsletter, please email your information to Edith at: erezamartinez2@unl.edu.

ANNOUNCEMENTS

- **UNL Needs Assessment & Strategic Plan** - EDPS will have a town-hall style all department meeting **February 22, 2022** from **11:30am-1:00pm** in the **Buffet Collaboratorium** and on Zoom guided by Dr. Williams.
 - The cover letter was sent to you via the listserv from Edith. Please make sure to read Norissa's cover letter as it thoughtfully frames the report and sets a constructive tone that we hope carries forward into the upcoming meetings, listening sessions and trainings that we are planning.
 - The UNL Needs Assessment and Strategic Plan has been sent to you via a link from Kyle. Please reach out to Edith if you did not receive this. We encourage you to read it carefully prior to the February 22nd meeting. Much of the information presented is emotionally powerful and it may be a difficult read for many of us, but this is a critical step forward for our department and our journey forward.
 - We appreciate the many hours and emotional energy that you have invested in this process.
 - Finally, this report is for **department use only** at this point, we will not distribute this beyond the Ed Psych students, staff, and faculty. We ask you to be mindful of your use of the document and reserve it for your own reading and/or internal discussions.



HERE'S WHAT'S UP!

1 - ANNOUNCEMENTS

2 - NEWS

3 - DIVERSITY, EQUITY, AND INCLUSION

4 - CLINIC CORNER

ANNOUNCEMENTS CONT...

- **EDPS Graduate Students:** Research Project Coordinator opportunity with the Buros Center. Details below:
 - **Title:** Research Project Coordinator
 - **Length of appointment:** March 1, 2022 to December 31, 2024 – (temp position)
 - **Description of work:**
 - Full-time appointment dedicated to Research related to funded projects. Duties will include various tasks related to the projects and programs of the Buros Institute of Assessment Consultation and Outreach, such as administering ongoing contract/grant activities, initiating contract/grant activities, participating in contract/grant activities that are initiated by others in the Institute, working with clients on continuing multi-year projects, writing contracts/grant proposals, leading the planning team for developing new contracts/grants, designing and conducting workshops on measurement topics, conducting ongoing research program related to contract/grant activities, making presentations to clients and at regional and national conferences, and publication of scholarly research.
 - **Qualifications:**
 - Earned Master's degree in Educational Psychology or related field, PhD candidate (preferred).
 - Experience conducting contract/grant activities; effective organizational, interpersonal, oral, and written communication skills.
 - Experience with Psychometrics and use of models such as Item Response Theory is preferred.
 - **How to Apply:** Submit cover letter, current resume, academic transcripts, and copies of up to 2 (co)authored publications

- **EDPS Faculty and Students:** Check out the following series hosted by the University Libraries Dinsdale Family Learning Commons.
 - **Crash Course in Research Data Management**
 - Date: Friday, February 18, 2022
 - Time: 12:00pm - 1:15pm
 - Location: Virtual - Zoom
 - Registration link: <https://unl.libcal.com/event/8790240>
 - Registration link: <https://unl.libcal.com/event/8790240>
 - Have you ever lost a project file? Been unable to find the most recent version of a document? Suffered hard drive failure or had your laptop stolen? Been unable to open old files? Been told your data management plan wasn't detailed enough? Forgotten which file was which? Even small research projects can generate enough data and digital material to become confusing and vulnerable to loss. Start your next project (or class) with a plan to stay organized and keep your data safe, from inception until you are ready to share, reuse, or revisit the project whether next month or years from now.
 - This workshop provides strategies and insights for managing your data for effective collaboration, to meet funder requirements, or to preserve it for reuse or sharing in the future.
 - About the speaker: Scout Calvert is a research data librarian at University of Nebraska-Lincoln. Her current projects trace the social aspects of data-centric knowledge production among genealogists, cattle breeders, and citizen historians. Dr. Calvert also investigates data infrastructure and practice in libraries and among academic researchers, informing data policy issues in academic libraries.

ANNOUNCEMENTS CONT...

- **EDPS Graduate Students:** Did you know that the department will pay for your conference posters measuring 40x 30. To get your poster paid for reach out to Edith.
- **EDPS Graduate Students** Are you interested in a career in behavioral health? Attend BHECN's virtual conference, "Building Bridges for Your Career: From Surviving to Thriving in 2022" on Friday, February 25th from 1-4pm! For more information click [here](#).
- **Thank you** to our anonymous donor this week. We appreciate any donations to the coffee bar.



Upcoming birthdays

Ally Thomsen- February 20

Merle Huff - February 21

Please let Edith know if you would like your birthday listed in "Weekly Wednesday!"

Happy Birthday



NEWS

- **EDPS Graduate Students who Plan to Graduate in Spring 2022:** Please read the attached PowerPoint presentation regarding deadlines for Spring 2022 commencement!

DIVERSITY, EQUITY, AND INCLUSION

- **EDPS Counseling and School Psychology Students and Faculty:** Check out BHECN's February 21st webinar on "Racial trauma and culturally sensitive trauma-informed care." Sign up [here](#).
- **EDPS Counseling and School Psychology Students and Faculty:** Check out BHECN's February 28th webinar on "Understanding the gender affirmative model for integrated primary care." Sign up [here](#).
- **EDPS Faculty, and Students:** Nebraska Community of Learners- Understanding Diversity Through Education (NCLUDE) is pleased to invite you to the upcoming NCLUDE session on Thursday, February 24th from 11:00am - 12:00pm.
 - Although faith is in many cases an "invisible" aspect of diversity, there are a vast number of different religious, spiritual, and secular identity groups present on our campus. Because our faith systems influence our understanding of values, morals, and community, they inherently affect our approach to diversity, equity, and inclusion work.
 - Panelists will discuss their religious, spiritual, and humanist communities, how they have found these communities in Nebraska, and how their identities and beliefs influence their approaches to social justice and diversity, equity, and inclusion work.
 - Register [here](#).

DIVERSITY, EQUITY, AND INCLUSION CONT...

- **EDPS Faculty and Instructors:** Here's some guidance from NCFDD on Decolonizing the Classroom: [Faculty Diversity](#).
- **EDPS Faculty, Staff, and Students:** We're 4 weeks into the Spring 2022 semester! Do you still need a semester plan? If so, consider using [NCFDD's semester planning guide](#).
- **EDPS Graduate Students and Faculty:** Consider attending [Division 53's webinar](#) on "Research and Community Approaches to Adapting Evidence-Based Interventions for Diverse Youth & Families"

CLINIC CORNER 🍷

- **Counseling and School Psychology Student-Therapists and Supervising Psychologists:** Check out BHECN's March 7th webinar on "Improving access to PCIT for children with autism." Sign up [here](#).
- **Counseling and School Psychology Supervising Psychologists and Student-Clinicians:** Join Dr. Catherine Jones-Hazledine (UNL Clinical Psychology graduate and NICPP graduate) for a [webinar](#) on rural mental health practice.
- **EDPS Faculty, Staff and Students:** ONLY clinic clients can park in the CSPC parking spots.
- **EDPS Faculty and Staff:** Consider registering for the Employee Assistance Program's (EAP) February 17th webinar on setting appropriate boundaries and effective interpersonal communication. You can register for this FREE professional development webinar [here](#).



SUSAN SWEARER, PH.D., LP
CHAIR

DEPARTMENT OF EDUCATIONAL PSYCHOLOGY
UNIVERSITY OF NEBRASKA - LINCOLN

UPCOMING OFFICE HOURS (TEAC 114B OR ZOOM)

DR. SUSAN SWEARER WILL BE AT THE NASP CONFERENCE IN BOSTON MONDAY, FEBRUARY 14, 2022 THROUGH FRIDAY, FEBRUARY 18, 2022

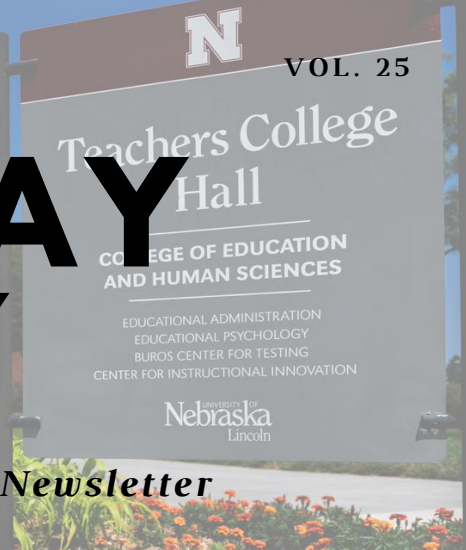
MONDAY, FEBRUARY 21: 1:00PM - 2:00PM

TUESDAY, FEBRUARY 22: 9:00AM - 10:00AM

WEDNESDAY, FEBRUARY 23: 1:00PM - 2:00PM

WEDNESDAY WEEKLY

Department of Educational Psychology Newsletter



We acknowledge Arapaho, Tsististas & Suhtai (Cheyenne), and Kaw Peoples, as well as the relocated Ho-Chunk, Iowa, and Sac and Fox Peoples, upon whose homelands now reside the campuses and programs of the University of Nebraska, a land-grant institution. Let us recognize the legacies of violence, displacement, and survival that bring us here today.

In this newsletter, you will find announcements, news, and resources from the Educational Psychology Department to help keep you engaged and informed! Be sure to check follow us on Twitter @UNL_EDPS for additional updates. If you would like an announcement posted to the newsletter, please email your information to Edith at: erezamartinez2@unl.edu.

ANNOUNCEMENTS

- CONGRATULATIONS** to our 2022-2023 Ph.D. and Ed.S. interns! We continue the tradition of 100% Match rate in our APA-accredited Counseling and School Psychology training programs! Join us in congratulating next year's interns!!!!

Ph.D. Interns (Counseling and School Psychology)

Kara Brown: Nebraska Internship Consortium in Professional Psychology--Boys Town Child/Adolescent Outpatient Track, Omaha, NE

Guadalupe Gutierrez Ramirez: Children's Hospital Los Angeles--Child/Family and Pediatric Psychology, Los Angeles, CA

Wesley Kobashigawa: University of Nevada-Reno Counseling Services, Reno, NV

Sonia Lindner: VA Los Angeles Ambulatory Care Center, Los Angeles, CA

Emily Wilson: Northwestern University Psychological Services, Evanston, IL

Ed.S. Interns (School Psychology)

Jackson Abramo: Lincoln Public Schools, Lincoln, NE

Baudelio Abrica Anguiano: Lincoln Public Schools, Lincoln, NE

Mackenzie Callen: Lincoln Public Schools, Lincoln, Ne

HERE'S WHAT'S UP!

1 - ANNOUNCEMENTS

2 - NEWS

3 - DIVERSITY, EQUITY, AND INCLUSION

4 - CLINIC CORNER

ANNOUNCEMENTS CONT...

Joe Denniston: Multnomah Educational Service District, Portland, OR

Eastyn Klink: Educational Service Unit #2, Fremont, NE

Briana Momchilovich: Munroe-Meyer Institute, Omaha, NE

Ally Thomsen: Lincoln Public Schools, Lincoln, NE

Cesar Torres Mulgado: Educational Service Unit #9, Hastings, NE

- **EDPS Graduate Students:** Did you know that during 2020-2021, nearly 27% of our visits were from graduate students? Weekly visits with a Writing Center Consultant enable writers to receive feedback from experienced readers and meet short- and long-term writing goals within a low-key and relaxed space. Whether graduate students are drafting a dissertation prospectus, polishing up a chapter, working on job market materials, or just need a fresh perspective on their thesis, the Writing Center is happy to help.
 - Our graduate consultants are all English department GTAs. Learn more about them [here](#).
- **EDPS Graduate Students:** EXCITING NEWS!!!! The College of Education and Human Sciences has a great website for student resources. On this website is a link for Graduate Assistantships. When you're searching for graduate assistantships, check out this website: <https://cehs.unl.edu/cehs/student-resources/> and click on "Graduate Assistantships."
- **EDPS Graduate Students:** FREE SKATE NIGHT is this Friday! A group of EdPsych students will be attending the free skate night hosted by UNL Campus Recreation this Friday (2/25). **All EdPsych students are welcome to attend!!** The event goes from 8:00 PM-11:00 PM at the John Breslow Ice Hockey Center (433 V St Lincoln NE 68508). If you are planning on attending, please meet there at **8:15 PM** (it is likely that students will not stay the whole time). Ice skating is free for UNL students with an NCard. Rentals are \$3.
 - If you need a ride/want to carpool to the ice rink, please reach out to Miriam Crinion (605-695-3824/ miriam.crinion@huskers.unl.edu)!
 - [Here](#) is a sign-up sheet:
 - **More information about the event can be found [here](#).**
- **EDPS Graduate Students:** Register to attend a FREE grant-writing seminar on March 10th sponsored by the Office of Graduate Studies. NIH has many grant mechanisms for funding student dissertation research. [Register](#) to learn about grant proposal writing during workshop by Feb. 25.
- **EDPS Graduate Students:** First EDPS Brown Bag of 2022! Dr. Lisa Rohde, Associate Director of Teaching & Research Development, will present "Careers Other Than Faculty Positions You Can Do with a PH.D. In Educational Psychology." **Feb. 28th, Buffet Collaboratorium (TEAC 202), 12:00-1:00pm.**
- **EDPS Graduate Students:** Questions about paperwork and graduate school requirements? Check out [this video](#) from the Office of Graduate Studies: Here are the PDF PowerPoint slides that go with the presentation.

ANNOUNCEMENTS CONT...

- **EDPS Graduate Students:** Students are responsible for uploading the ROC form, title page, and abstract, online, and all at the same time. This should be the very last step in the deposit process.
 - Short 8 minute video addressing this, where to find the link, etc.. linked below.
 - [Link to announcement.](#)
- **EDPS Graduate Students:** We have one N95 mask for each student in the department. Feel free to stop by the front desk to pick up your mask.
- **EDPS Graduate Students:** Research Project Coordinator opportunity with the Buros Center. Details below:
 - **Title:** Research Project Coordinator
 - **Desired Start Date:** ASAP
 - **Length of appointment:** Temporary: 6-month to 2-year position depending on funding availability
 - **Description of work:**
 - Full-time appointment dedicated to Research related to funded projects. Duties will include various tasks related to the projects and programs of the Buros Center for Testing (Psychometric Consulting), such as administering ongoing contract/grant activities, initiating contract/grant activities, participating in contract/grant activities that are initiated by others in the Institute, working with clients on continuing multi-year projects, writing contracts/grant proposals, leading the planning team for developing new contracts/grants, designing and conducting workshops on measurement topics, conducting ongoing research program related to contract/grant activities, making presentations to clients and at regional and national conferences, and publication of scholarly research.
 - **Qualifications:**
 - Earned Master's degree in Educational Psychology or related field, PhD candidate (preferred).
 - Experience conducting contract/grant activities; effective organizational, interpersonal, oral, and written communication skills.
 - Experience with Psychometrics and use of models such as Item Response Theory is preferred.
 - **How to Apply:** Submit cover letter, current resume, academic transcripts, and copies of up to 2 (co)authored publications
 - **Contact Information:** Email application materials to Zoe McManaman zmmanaman2@unl.edu.
Deadline for submission of applications: Friday, March 11, 2022, 4:00 PM.
- **EDPS Faculty and Staff:** Consider nominating an EDPS graduate student for the Office of Graduate Studies' Graduate Student Awards or Fellowships. [Nominate a student today.](#)
- **EDPS Program Directors:** Important deadlines for hiring lecturer/Ts:
 - Summer 2022 Offer Letters – DUE April 4, 2022
 - Fall 2022 Offer Letters – DUE June 6, 2022
 - Spring 2023 Offer Letters – DUE December 5, 2022

ANNOUNCEMENTS CONT...

- **Counseling and School Psychology Ph.D. 2022-2023 Interns:** The National Register of Health Service Psychologists and the American Psychological Foundation (APF) are pleased to announce the new Internship Travel Scholarships (ITS). This \$1,000 scholarship will be awarded to 40 psychology doctoral students who are transitioning to an APA/CPA accredited internship in a new geographic location in 2022. Applicants for the \$1,000 scholarship will be selected based on both their stated goals as a health service psychologist and economic need.
 - The application deadline is April 15, 2022. Successful applicants will be notified by July 1, 2022, and scholarship funds will be distributed by August 1, 2022. [Learn more and apply here.](#)

Upcoming birthdays

No birthdays this week.

Happy Birthday



Please let Edith know if you would like your birthday listed in "Weekly Wednesday!"

NEWS

- **EDPS International Students:** Share your voices and campus experiences at UNL by completing the International Student Experience (ISE) [survey](#).

DIVERSITY, EQUITY, AND INCLUSION

- **Inclusive Excellence in faculty and staff searches.** UNL has been working on this BRIDGE document for several years. We are pleased to provide you with continued information about the [BRIDGE: Breakthrough Recruitment for Inclusive Diversity Growth and Excellence program](#). This program is developed to assist the campus in incorporating inclusive excellence processes in faculty and staff searches. **The development of major components of this program are complete.** The Office of Diversity and Inclusion is excited about this initiative and its potential to increase the diversity of our applicant pools and to ensure our University's hiring and retention practices are inclusive and equitable. This is particularly important in attracting and retaining diverse talent from underrepresented groups.
 - The **BRIDGE** landing page (<https://go.unl.edu/bridgeprogram>) provides an introduction and purpose of the program and will house additional components as they are developed. The following components of the program are available and ready for campus-wide use:
 - **University of Nebraska–Lincoln Faculty and Staff Search Best Practices Guide for Inclusive Excellence** provides evidence-based practices designed to assist your recruitment, assessment, and hiring efforts. The guide can be accessed at <https://go.unl.edu/searchguidance>
 - **Diversity Ambassador Program** provides specially trained consultants to assist college, department, and unit search committees and hiring officials in conducting the best possible implementation of best practices for faculty and staff searches. The diversity ambassador program and request form can be directly accessed at <https://go.unl.edu/diversityambassadors>

DIVERSITY, EQUITY, AND INCLUSION CONT...

- **Campus and Community Connections** is a website and recruitment and retention resource that provides amenities, attractions, contacts, business, and organizations – broken down by specific categories – available at the University of Nebraska-Lincoln, within the City of Lincoln, Lancaster County, and surrounding areas. The Connections site may be accessed at <https://go.unl.edu/creatingconnections>
- Thank you for your continued support of inclusive excellence and collaboration. The BRIDGE program is an example that reflects the voices of and review by many campus partners. We encourage you to share this information with persons in your areas who have responsibility for faculty and staff search processes. If there are any questions or need for clarification, please do not hesitate to contact our office at diversity@unl.edu or me Gwen Combs, gcombs2@unl.edu.
- **EDPS Faculty and Instructors:** Please take time to read and reflect on these important resources from UNL's Office of Faculty Affairs:
 - https://www.chronicle.com/article/academe-has-a-lot-to-learn-about-how-inclusive-teaching-affects-instructors?cid2=gen_login_refresh&cid=gen_sign_in
 - <https://www.insidehighered.com/blogs/just-visiting/stumbling-toward-inclusive-teaching>
 - <https://www.facultydiversity.org/mentorsfebruary22>

CLINIC CORNER

- **Counseling and School Psychology Clinicians:** Consider attending Division 53's March 3rd webinar on "Research and Community Approaches to Adapting Evidence-Based Interventions for Diverse Youth and Families."
 - Register [here](#).
- **Upcoming Webinar:** Why do Black Males Consider Suicide?
 - Wednesday, March 9, 2022
 - 2 p.m. CST
 - [Register Now](#)
- **Need sleep?** Check out the Greater Good Science Center's strategies for getting a better night's sleep.
 - Article Link [here](#).



SUSAN SWEARER, PH.D., LP
CHAIR

DEPARTMENT OF EDUCATIONAL PSYCHOLOGY
UNIVERSITY OF NEBRASKA - LINCOLN



UPCOMING OFFICE HOURS (TEAC 114B OR ZOOM)

THURSDAY, FEBRUARY 24: 3:00 PM - 4:00 PM

FRIDAY, FEBRUARY 25: 11:00 AM - 12:00 PM

MONDAY, FEBRUARY 28: 12:00 PM - 1:00 PM

TUESDAY, MARCH 1: 1:00 PM - 2:00 PM

WEDNESDAY, MARCH 2: 1:00 PM - 2:00 PM